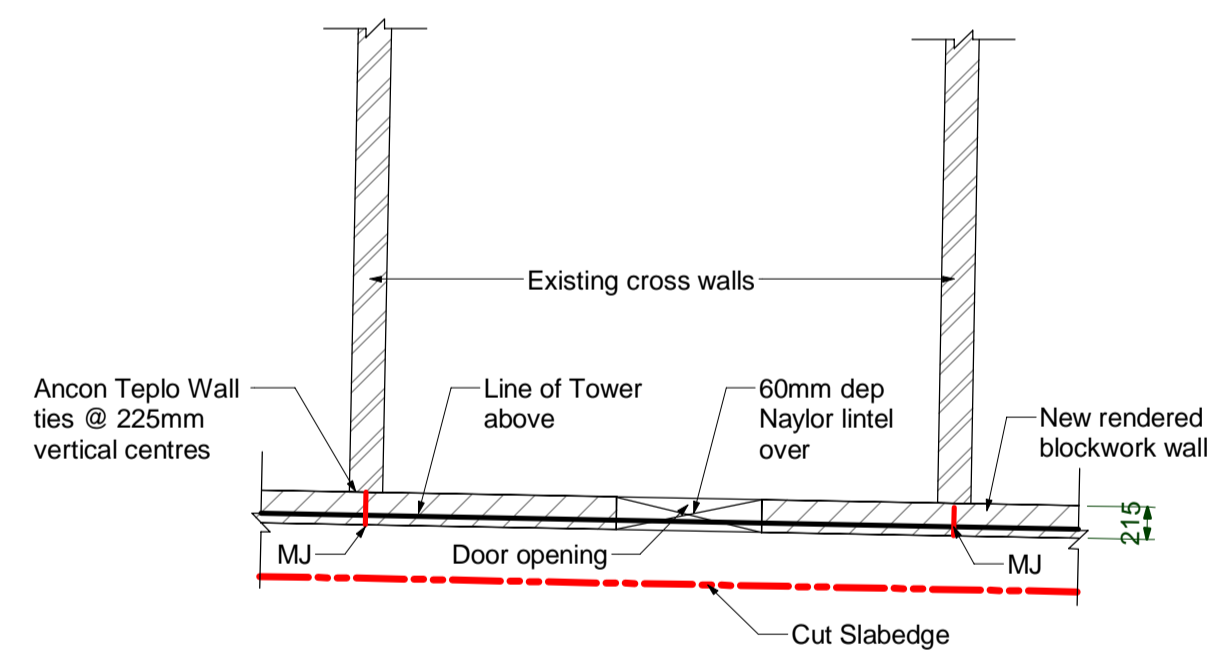


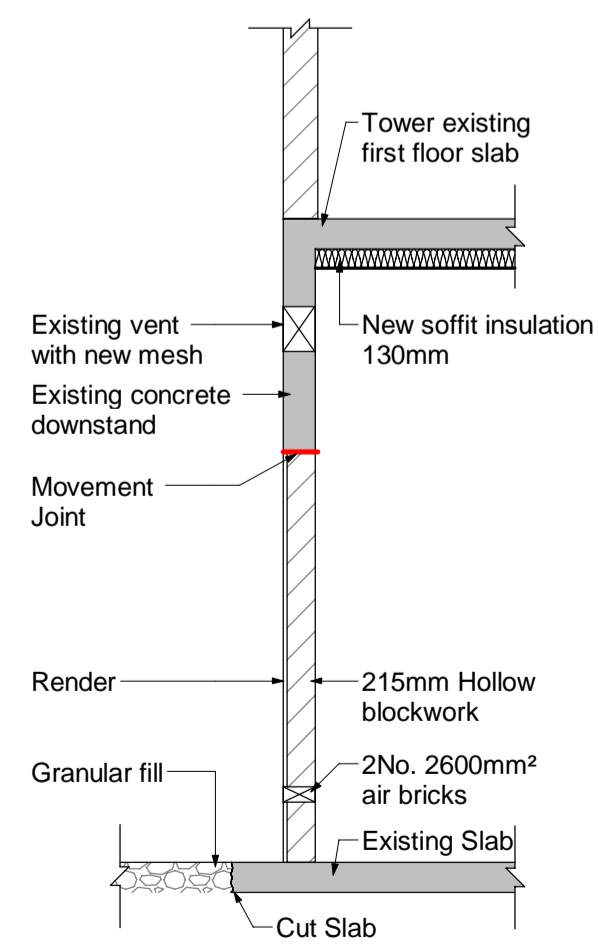
Existing Elevation 5

1 : 100



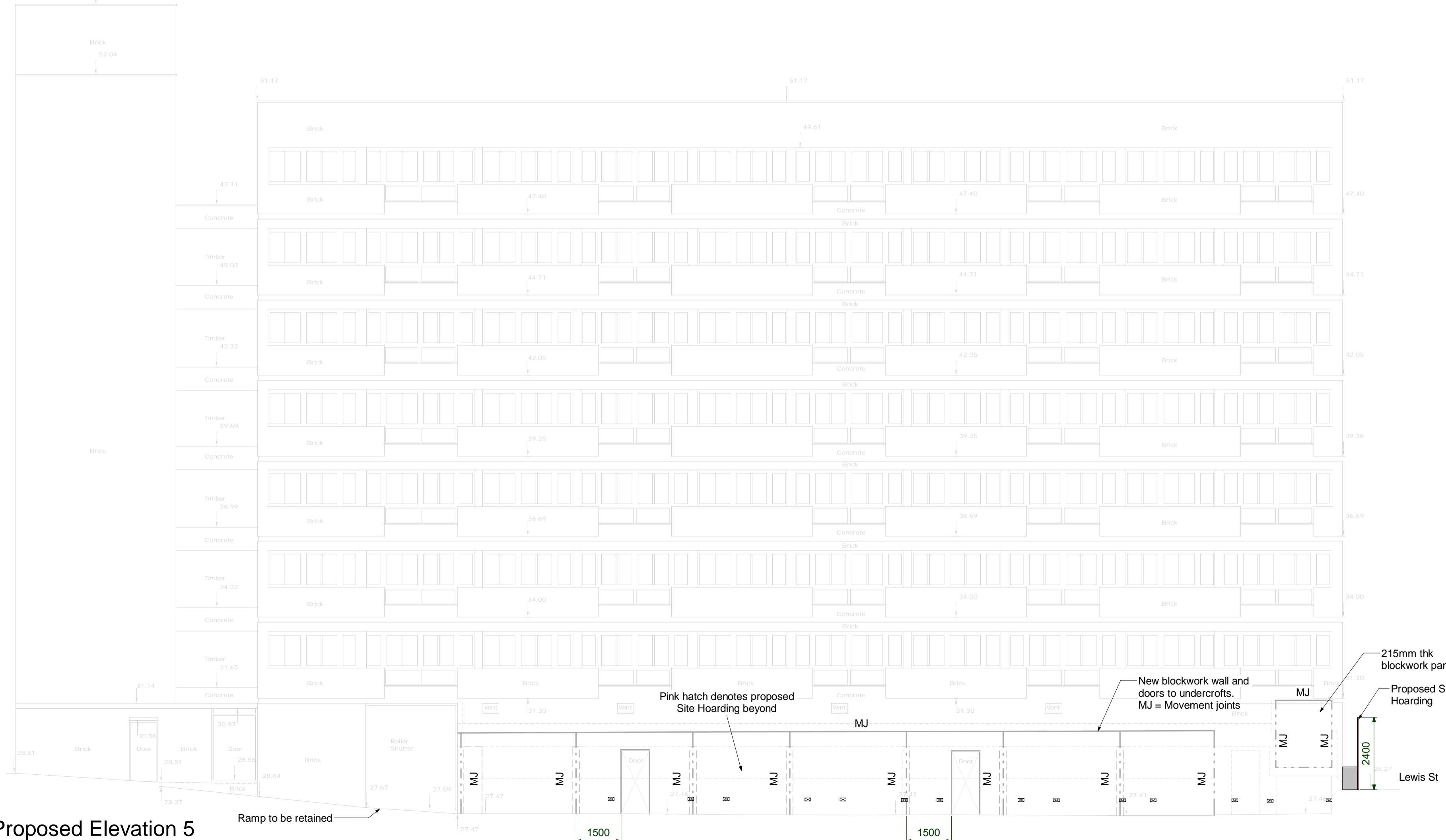
New Wall Detail Plan

1 : 50



New Wall Detail Section

1 : 50



Proposed Elevation 5

1 : 100

Notes

- Do not scale from this drawing on print or electronically. Work from figured dimensions only.
- No deviation from the details on this drawing is allowed without CampbellReith's prior permission in writing.
- Read this drawing with all Architect's, Service Engineer's and CampbellReith's relevant details, specifications and drawings.
- All work is to be done in accordance with the relevant specifications issued by CampbellReith, British Standard Codes of Practice, Statutory Requirements and the Contract Documents.
- Drawing Revision:**
P: Preliminary Evolving drawings for approvals, tenders, billings etc.
C: Contractual Drawings authorized and approved for stage completion Stage 4-Tender or Stage 5-Construction.
- Drawing Status:**
Work in progress (WIP)
S0 - Initial Status
Shared (Non-contractual)
S1 - Suitable for coordination, S2 - Suitable for information, S3 - Suitable for review and comment, S4 - Suitable for stage approval. Published (Contractual)
A1, An etc - Authorised and accepted ('n' relates to work stages)
B1, Bn etc - Partial sign-off (with comments)
CR - As constructed record document (Final Construction ONLY). Any deviations to that which is on site is not the liability of CampbellReith)
- Work Stages:**
2 - Concept, 3 - Definition, 4 - Design, 5 - Build & commission, 6 - Handover
- Only drawings with revision **Cn** and status **A5** to be used for construction.

| Rev | Description | Date | By |
|-----|--------------------|----------|-----|
| P1 | Issued for Comment | 08.08.23 | RLS |

CampbellReith
consulting engineers

London 020 7340 1700 Manchester 0161 819 3060
 Surrey 01737 784 500 Birmingham 01675 467 484
 Bristol 0117 916 1066 Dubai 00 971 4345 7088
 www.campbellreith.com

Job Title **Hadley Street Podium**
 Client **LB Camden**

Existing & Proposed Elevation 5

| Drawn by | Date made | Scale @ A1 | Checked by | Suitability | CR Project |
|----------|-----------|--------------|------------|-------------|------------|
| RLS | 27.06.23 | As indicated | | S1 | 14041 |

| Project No. | Orig. | Funct. | Spatial | Form | Disc. | Number | Rev |
|-------------|-------|--------|---------|------|-------|--------|-----|
| 14041 | CRH | Z1 | ZZ | DR | S | 0925 | P1 |