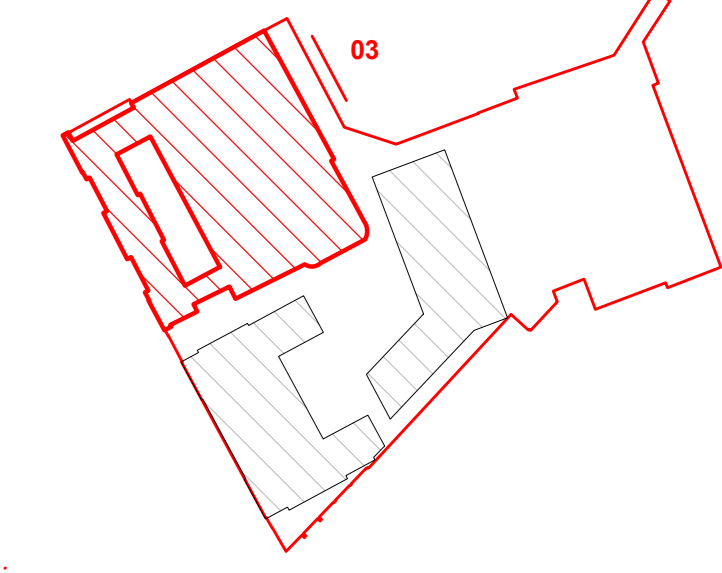


Copyright Hawkins\Brown Architects
 No implied licence exists. This drawing should not be used to calculate areas for the purposes of valuation. Do not scale this drawing. All dimensions to be checked on the site by the contractor and such dimensions to be their responsibility. All work must comply with relevant British Standards and Building Regulations requirements. Drawing errors and omissions to be reported to the architect. To be read in conjunction with Architect's specification and other consultant information.

Rev	Description	Date
P01	Issued for Planning (Planning Amendments)	19/02/23
P02	Issued for Planning (Planning Amendment Updates)	25/02/23
P03	Issued for Planning (Planning Amendment Updates)	19/05/23



Location Plan: NTS

Material Palette

- Precast brick facade using off-white/buff brick to standard dimensions
- Brick to match existing fabric
- Curtain wall system with bronze anodised aluminium frame: high performance glazing
- Bronze anodised aluminium framed windows: high-performance glazing
- Bronze anodised aluminium louvers to match curtain walling/windows
- Precast reconstituted Portland Stone horizontal bands/ cills/ fins/ soffits
- Glazed ceramic cladding panel/fins to external elevations
- Glazed ceramic with engraved relief pattern
- Architectural stonework to restoration of existing fabric (by stone specialist)
- Slated pitched roof on timber bats
- Bronze anodised aluminium framed spandrel windows (ceramic back-painted)
- Upper section of existing southern pediment to be dismantled and rebuilt to match existing fabric
- New replacement timber framed windows (non-opening)
- Roof vent. Colour matched to slate roof tiles (no.10)



159 St John Street
 London EC1V 4QU
 mail@hawkinsbrown.com
 hawkinsbrown.com



Project
 256 Grays Inn Road
 London
 WC1X 8LD

Drawing
 Plot 1 Elevation Bay Study 03

Scale @ A0
 1 : 50
 Date
 May 2023

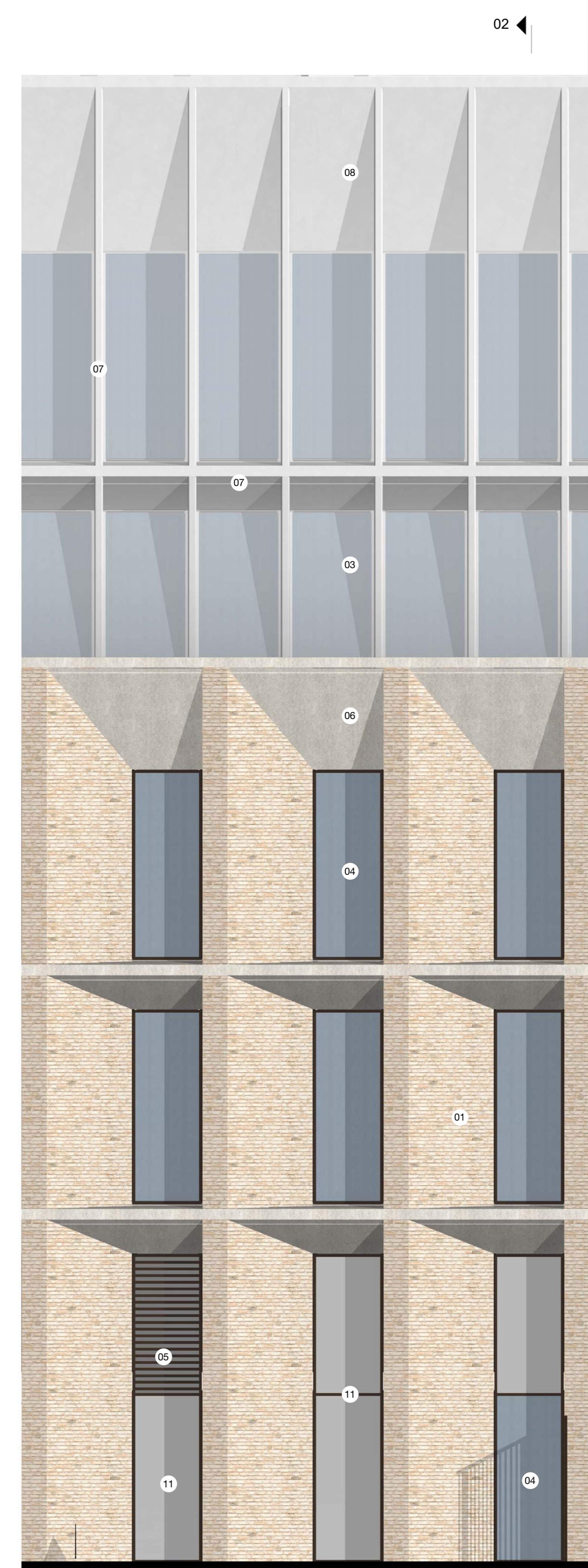
Drawn By
 Checked By

Job Number
 17056
 Status
 S2
 Purpose of Issue
 For Information

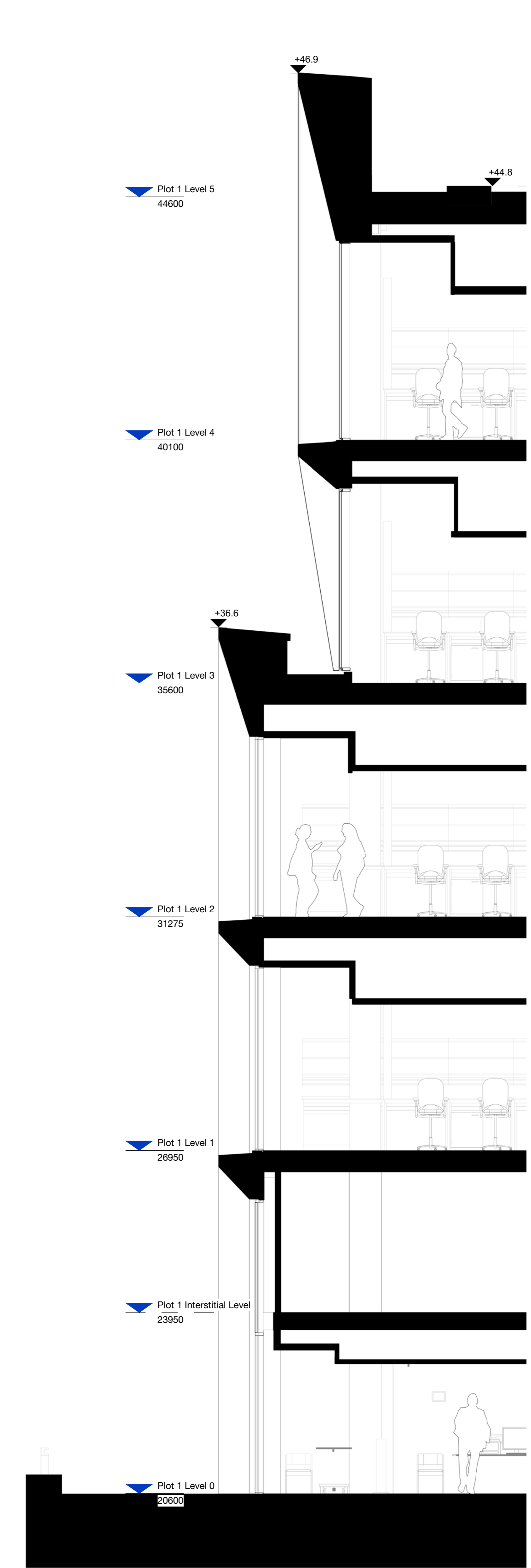
Drawing No.
 BEMP-HBA-P1-ZZ-DR-A-21-1402
 Rev
 P03



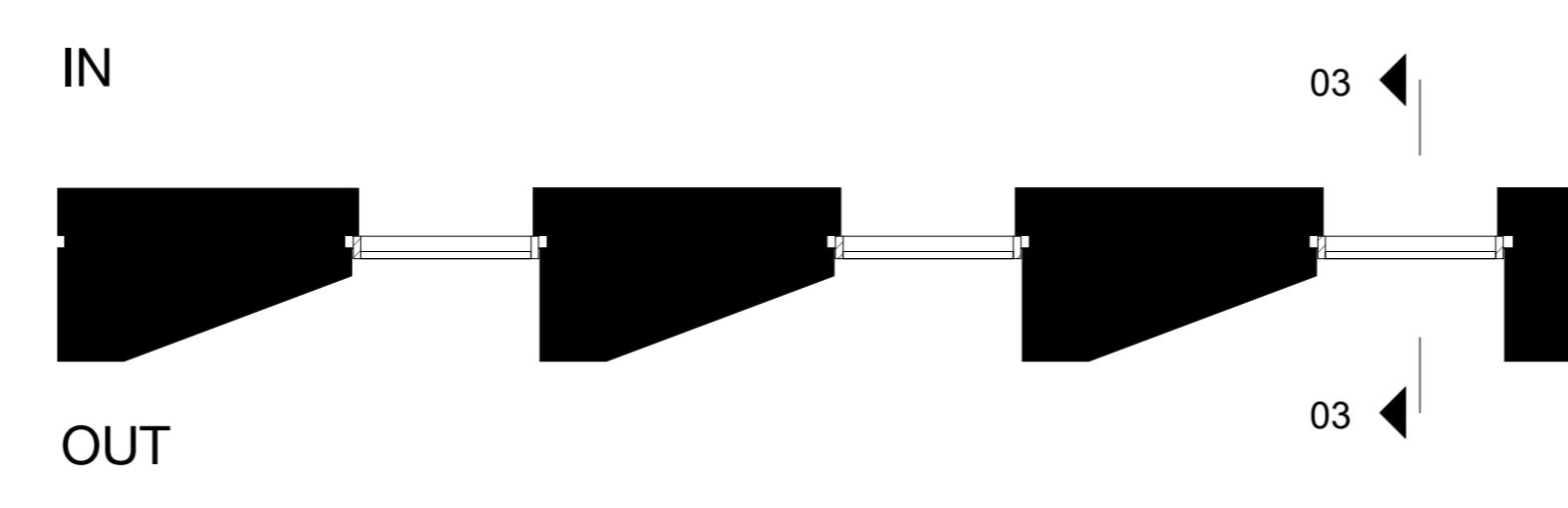
3D Axonometric



Typical Elevation



Typical Section



Typical Plan