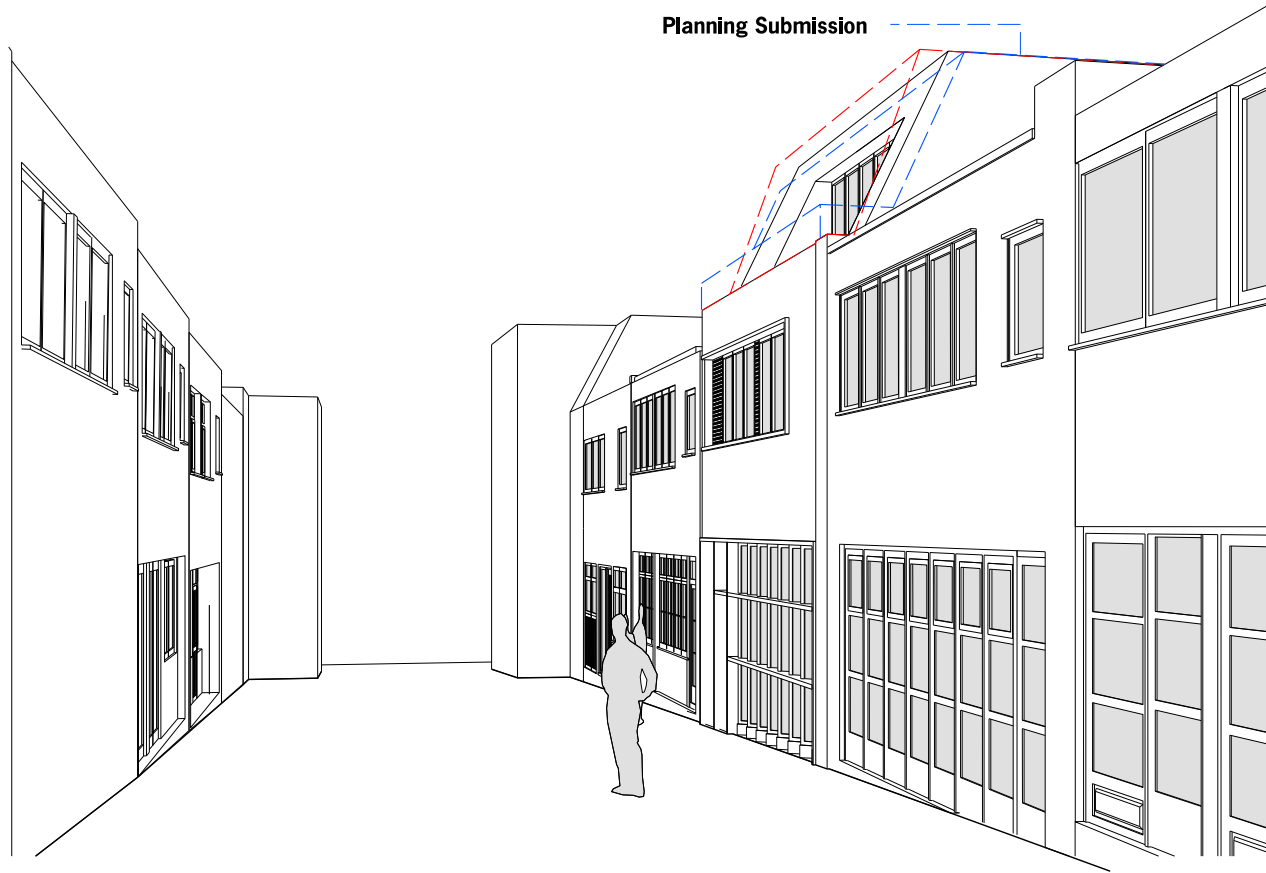


**01** Pre-application Advice 24th April 2023



**03** PLANNING SUBMISSION

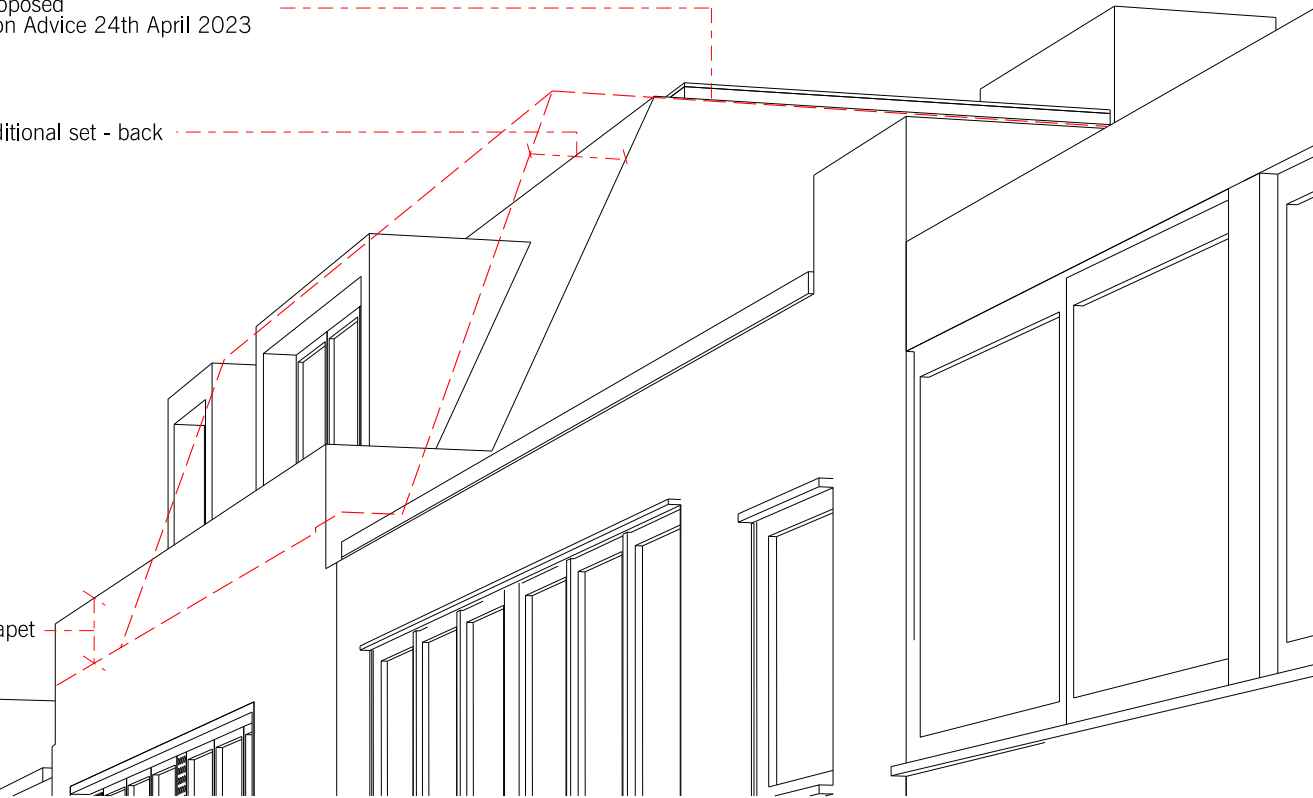


**02** Pre-application Advice 11th July 2023

Previously proposed  
Pre-application Advice 24th April 2023

Proposed additional set - back

Increase parapet



**04** PLANNING SUBMISSION

All dimensions must be checked and PAPA Architects Ltd are to be informed of any discrepancies prior to construction. Any DWG's issued by PAPA Architects Ltd are to be read in conjunction with the associated PDF versions. This drawing and any of the details therein remain the copyright of PAPA Architects Ltd. All drawings prepared by PAPA Architects are not to be used for any submissions, area schedule calculations or used by any other persons or companies other than PAPA Architects Ltd unless written consent has been given by PAPA Architects Ltd.



0 m

Rev	Date	Description	Chk
P01	14.08.23	PLANNING SUBMISSION	NP

**PAPAA**ARCHITECTS  
222 Archway Road, Highgate, London N6 5AX  
w: papaarchitects.co.uk t: +44 20 8348 8411

Drawing Title:	Project Name:	Client:
<b>Line Drawing View 3</b>	<b>15 Belsize Park Mews NW3 5BL</b>	
Project No:	Drawing No:	Rev:
<b>2211</b>	<b>00 232</b>	<b>P01</b>
Scale:	Status:	Date:
<b>N.T.S@A3</b>	<b>PLANNING</b>	<b>23.06.23</b>
Drawn:		
<b>TN</b>		