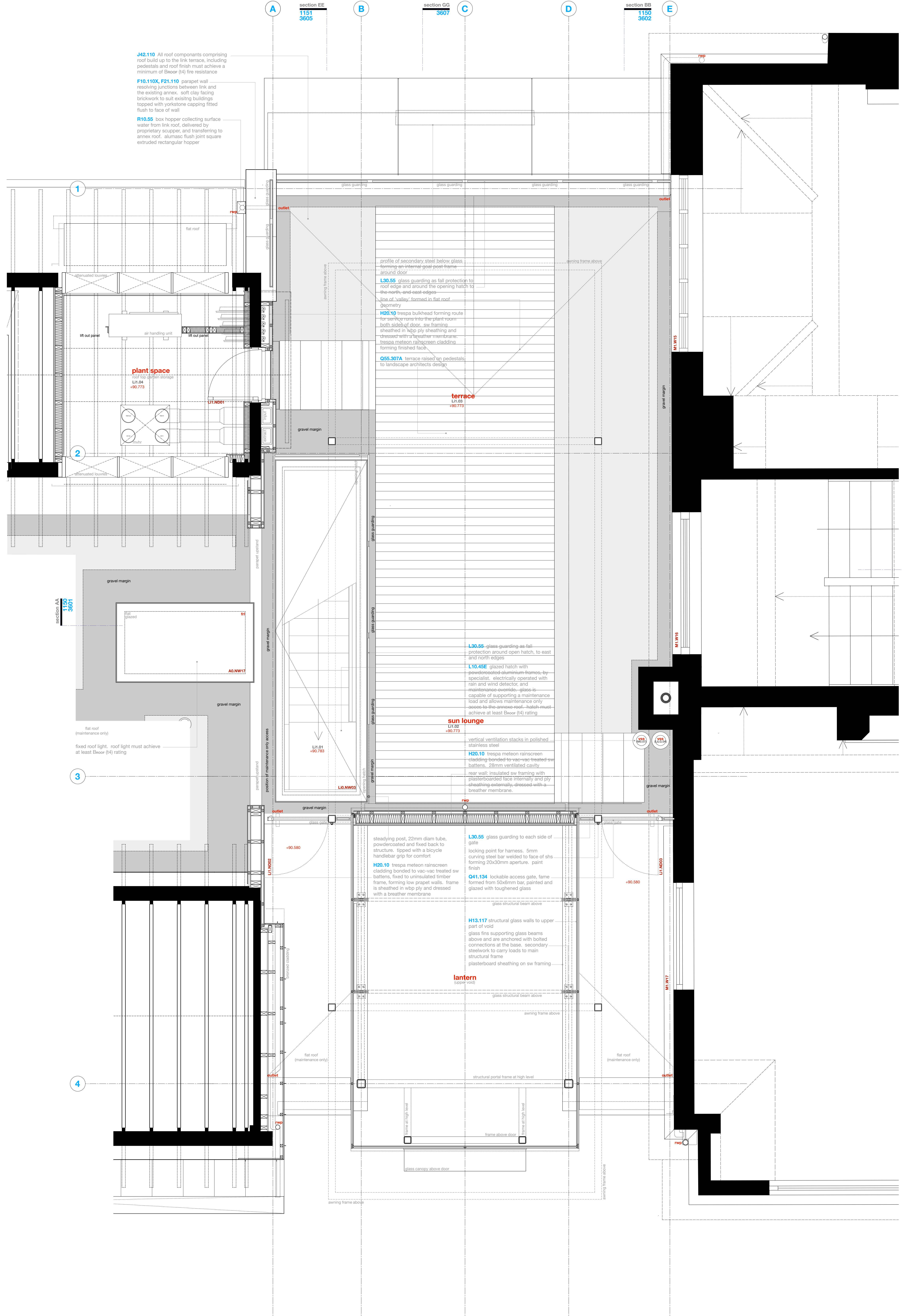


© BOWKER SADLER PARTNERSHIP LIMITED  
 THIS DRAWING IS THE SUBJECT OF COPYRIGHT WHICH VESTS IN BOWKER SADLER PARTNERSHIP LIMITED. IT IS AN INSTRUMENT OF COPYRIGHT TO REPRODUCE THIS DRAWING BY ANY MEANS INCLUDING ELECTRONIC, WITHOUT THE EXPRESS WRITTEN CONSENT OF BOWKER SADLER PARTNERSHIP LIMITED WHICH RESERVE ALL ITS RIGHTS.  
 BOWKER SADLER PARTNERSHIP LIMITED ASSUMES ITS RIGHTS TO BE IDENTIFIED AS THE AUTHOR OF THIS DESIGN.  
 REPORT ERRORS & OMISSIONS TO ARCHITECT  
 CHECK ALL DIMENSIONS ON SITE  
 DRAWING TO BE READ IN CONJUNCTION WITH THE HEALTH AND SAFETY PLAN AND ALL RELEVANT RISK ASSESSMENTS



REV	DATE	DRN		(CHK)
PROJECT				
<b>The Hoo: Scheme 3</b>				
<b>17 Lyndhurst Gardens,</b>				
<b>Hampstead, London</b>				
Returning A Grand Victorian House to Private Domestic Accommodation				
NW3 5NU				
CLIENT				
<b>Mr and Mrs Yu</b>				
REPRESENTED BY				
<b>JAGA Developments (London)</b>				
DRAWING				
<b>Link: First Floor Layout</b>				
<b>as Proposed</b>				
<b>for Conditional Approval</b>				
SCALE	SHEET SIZE	DRAWN	CHECKED	DATE
1:20	A0	GM:G		Sept 2020
BOWKER SADLER ARCHITECTURE				
A. Hatherlow House, Hatherlow, Romley, Stockport SK8 3DY				
T. 0161 406 7233				
E. <a href="mailto:info@bowker-sadler.co.uk">info@bowker-sadler.co.uk</a>				
W. <a href="http://www.bowker-sadler.co.uk">www.bowker-sadler.co.uk</a>				
JOB No	DRAWING No	REVISION		
19013	1133	A		
STATUS	PLANNING			