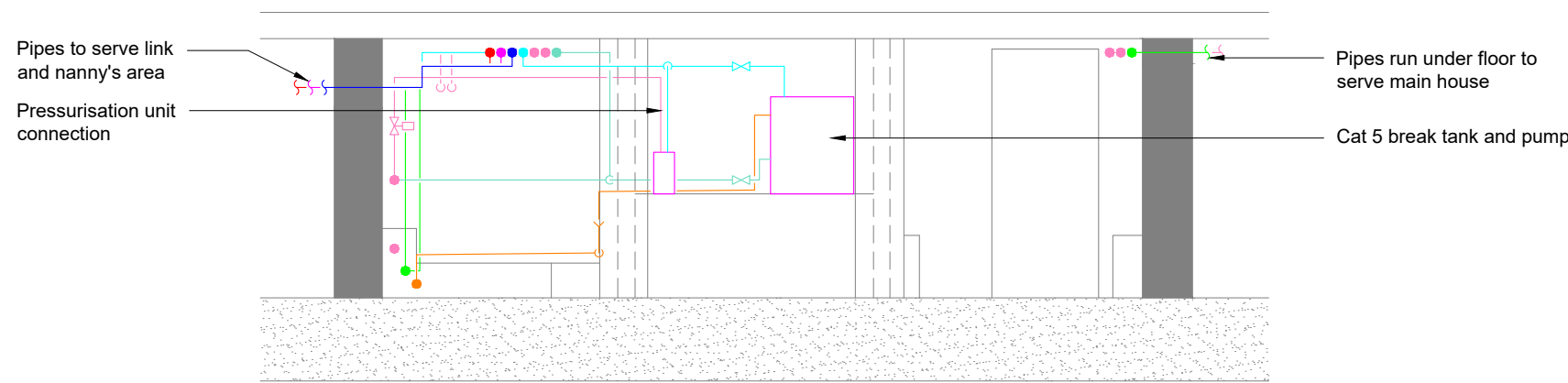
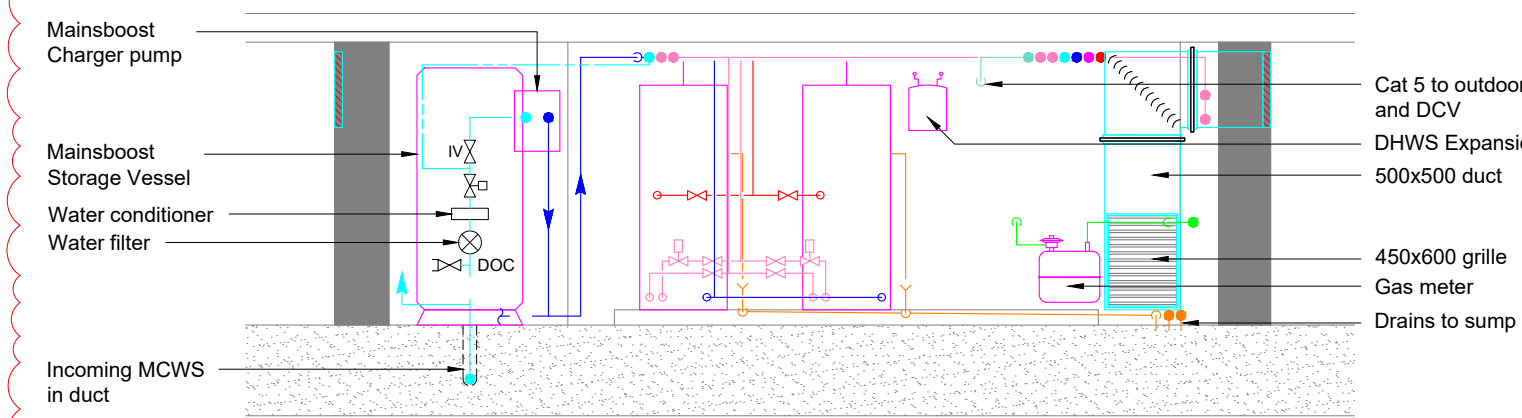


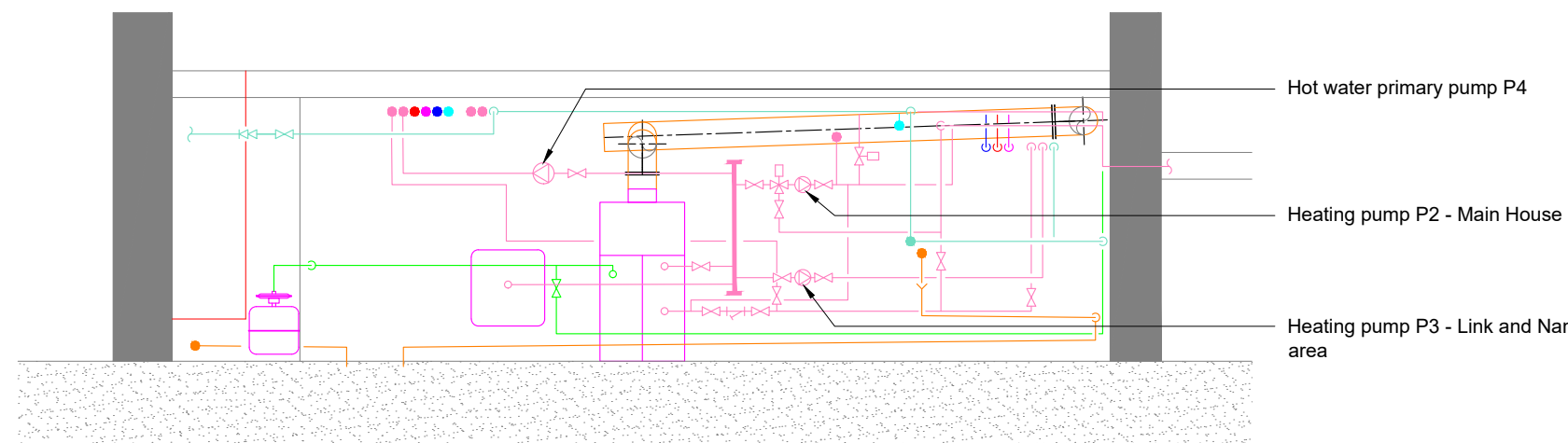
- Notes
1. This drawing should not be scaled
 2. Figured dimensions are approximate and subject to site conditions.
 3. Access panels to be installed in ceilings/bulkheads etc. where duct access panels are located.
 4. Drain cocks to be fitted at all low points and air vents fitted at all high level points.
 5. Equipment without references is identified by room name in the specification and schedules
 6. Refer to schematics for sizes



Section A-A



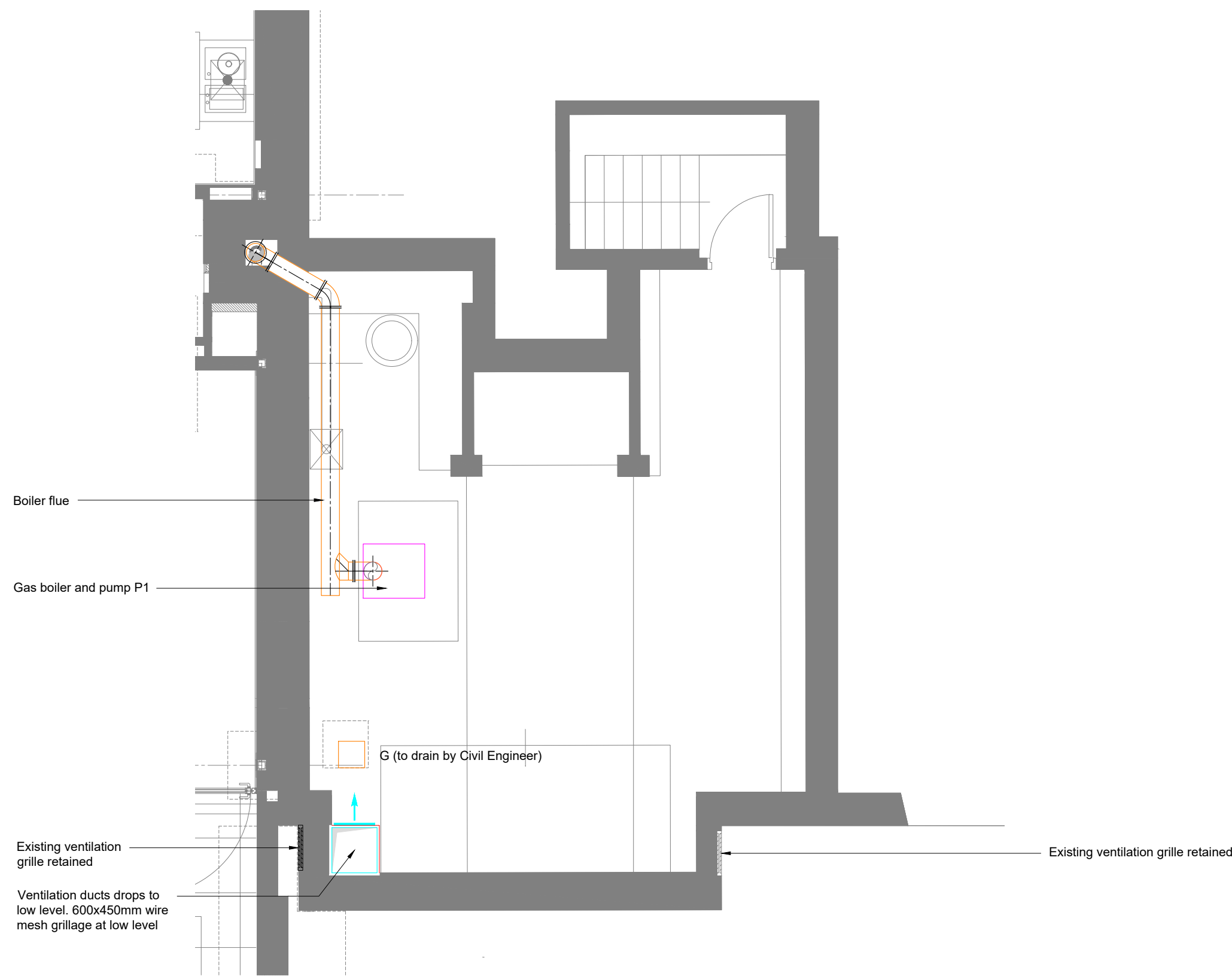
Section B-B



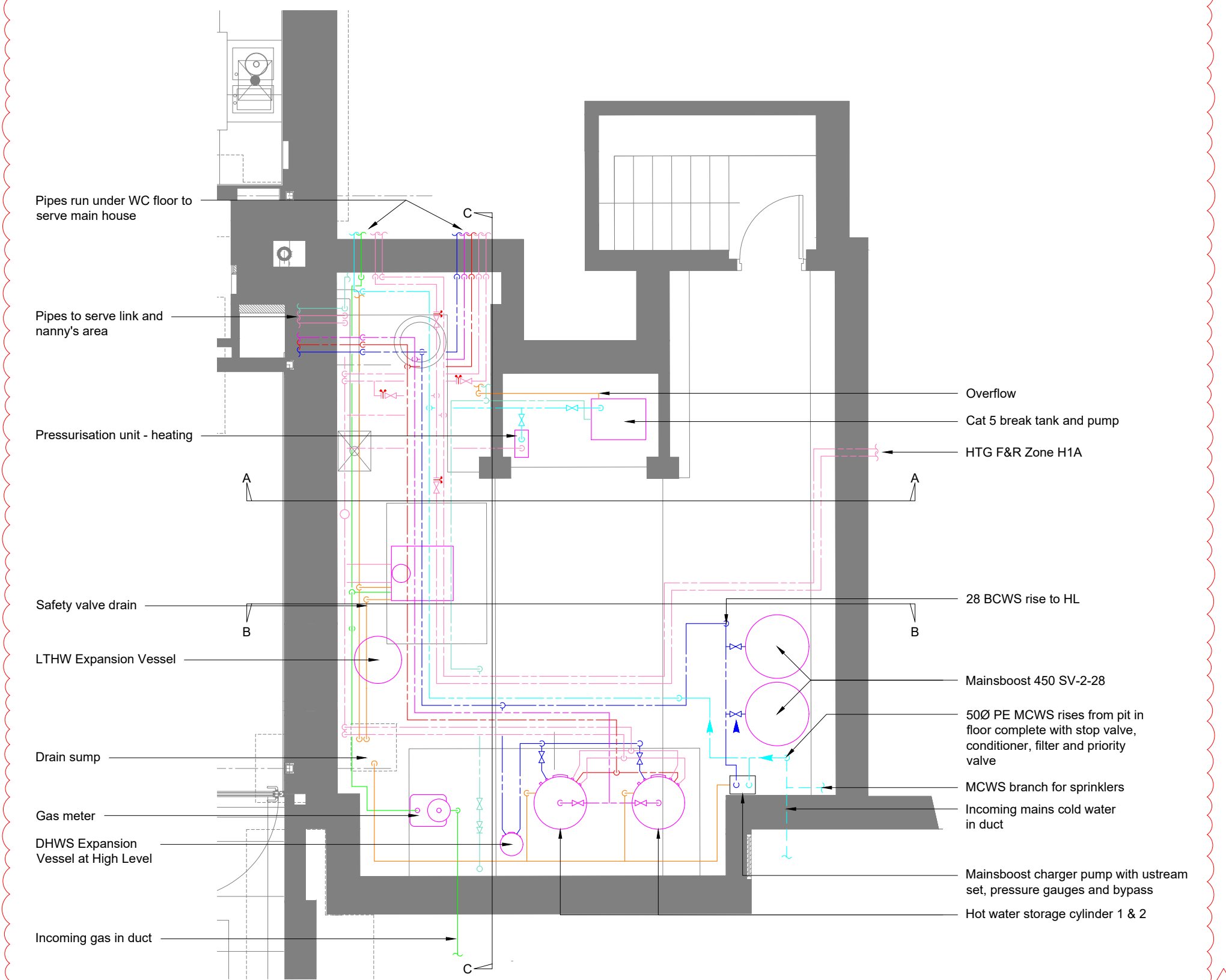
Section C-C

Legend

- Heating F & R
- Boosted Cold Water
- Mains Cold Water
- Hot Water Flow
- Hot Water Return
- Natural Gas
- CAT 5
- Refrigerant Pipework
- Specialist Ductwork
- Supply Ductwork
- Commissioning Set
- Drain Cock
- Isolation Valve (With Flow Restrictor on Water Outlets)
- 2 Port Motorised Valve
- Pump
- Strainer
- Thermostatic Mixing Valve



Ventilation Layout



Pipework Layout

For Tender

Rev	Date	Description	Card	Chk
-----	------	-------------	------	-----

Architect

Bowker Sadler Partnership

Client

Jaga Developments (London) LTD

Project

The Hoo Hampstead

Drawing Title

House
Mechanical Services
Basement Boiler Room
Layout

ScotchPartners

Building Services Engineering | Sustainability | Acoustics

90 High Holborn
London
WC1V 6LJ
020 3544 5400
www.scotchpartners.com

Copyright reserved. Work to figured dimensions only. Discrepancies to be reported before proceeding.

Issue

Date

Aug 22

Scale @ A1

1:50

Drawn By

KS

Checked By

JB

Drawing No.

5243-SP-MH-LG-DR-Z-400

Rev

T02