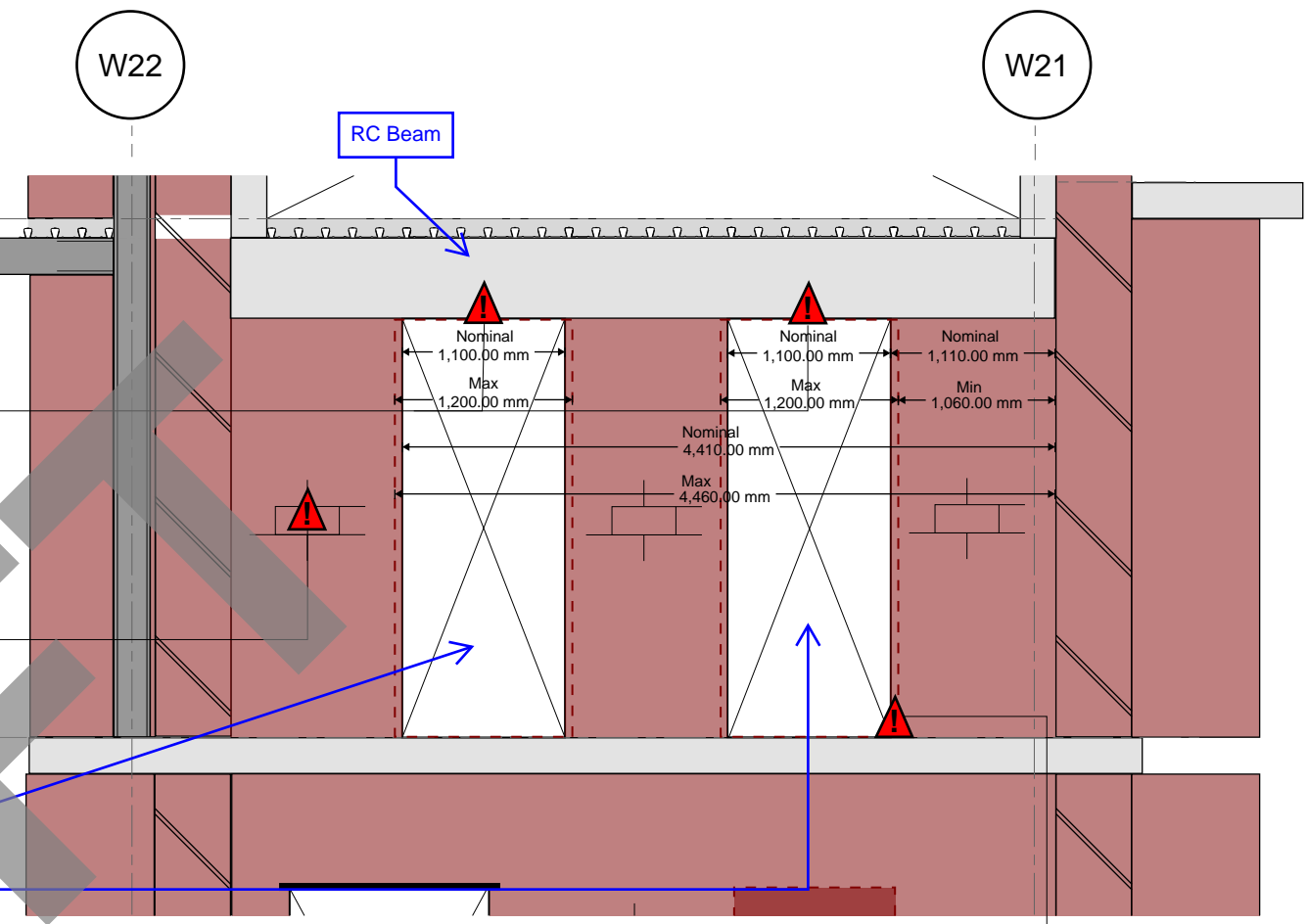


Ground Floor Plan View (Not to Scale)



Section A-A - Wall A Opening (Not to scale)

Forming the Wall A opening:

Setting Out

The setting out point to construct the opening should be performed on the staff room side. In the staff room, there is a visible wall that is offset from gridline W21 (See Ground Floor Plan View).

The exact position of this wall is not confirmed in relation to the gridline. Therefore a 4.41m and 1.11m nominal distance has been taken off the face of this wall for the left and right opening respectively, which has allowed for a +/- 100mm tolerance.

Opening Up Tolerances

The setting out and opening dimensions are nominal, which has allowed for a +/- 50mm on either side of the opening.

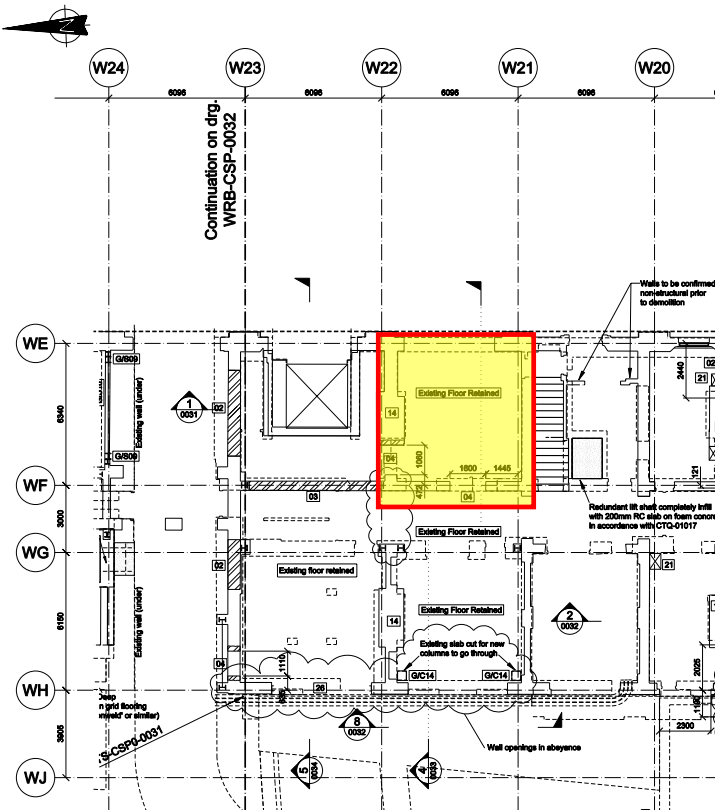
The specified tolerances may be reduced, allowing for a larger nominal opening size, if the contractor is able to show that their construction methodology justifies the use of tighter tolerances. The method statement detailing this methodology should be submitted to the engineer for review prior to commencement of the works.

Construction

A diamond tipped saw should be used to construct the opening with a vertical guide for precision.

Any loose or damaged masonry next to the saw cut to be made good.

The contractor should produce a construction methodology statement to be reviewed by Arup before construction commences.



Key: Area in relation to Western Range Building

Setting out instructions for Wall A opening
Kings Cross Station, London

Harry Potter Kings Cross (285805)

02 August 2023 | For Information | KF, CD

OA-SK-S-20221215-001