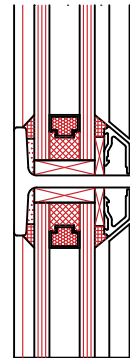


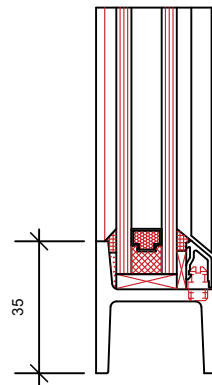
- Generally manufactured in accordance with BS 6510, W20 Section
- Weathertightness: To BS 6375: Part 1
- Exposure Category (Design Wind Pressure): 1200/2000 (Pa) see Table AA
- For air permeability, water-tightness and wind resistance data see Table AA
- Operation and strength characteristic: To BS 6375: Part 2
- Construction: All frames welded corners and are flat and square within normal manufacturing dimensional tolerances of +/- 1.5mm. Intermediate bars are hot tenon riveted
- Galvanizing: All components including steel attachments, coupling members and ancillaries: hot-dipped after manufacture to BS EN ISO 1461
- Glazing details: will accept double glazing up to 16.4mm in thickness. Glazing beads present no horizontal ledges on which dust and dirt can gather
- Weatherstripping: Gaskets complying with BS 4255: Part 1, manufactured from EPDM, secured into grooves of opening frame with adhesive



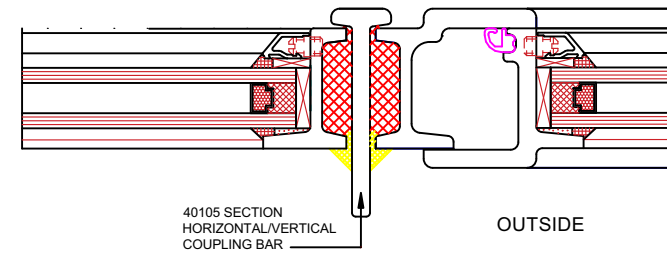
Image of W20 Range Glazing (in situe)



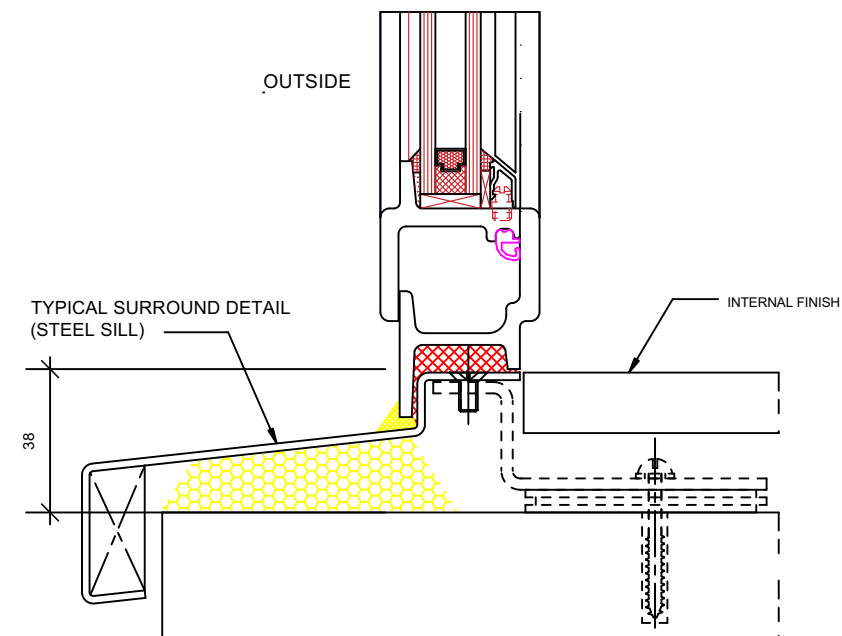
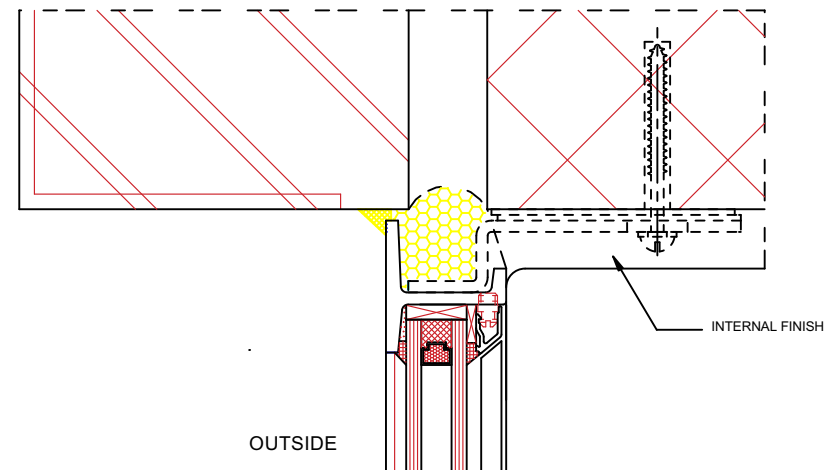
Glazing Bar Detail 1:2



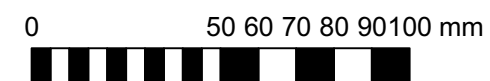
Sectional Window Detail:
Equal Long Leg 1:2



Coupling Detail 1:2



Typical Surround Detail 1:2



Contractor to confirm all dimensions.
HHD not liable for seeking relevant planning authority
permissions (including LBC) unless specifically directed by
the client

-	11.07.22	First Issue	CMD
No.	Date	Revisions / Submissions	Revised by
 <p>HamburyHirdDesign</p>			
Design Firm HamburyHird Design Ltd. 50-52 Wellsway Bath BA2 4SA Telephone: 01225 336004			
Stage <p>PLANNING</p>			
Project Title <p>Shropshire House 11-20 Capper Street London.WC1E 6JA</p>			
Drawing Title <p>Typical External Glazing Details</p>			
Project Manager		Project ID	
RH		261	
Drawn By		CAD File Name	
CMD		261_Existing & Proposed External Elevations- Shropshire House.vwx	
Reviewed By		Drawing No.	
RH		253.406	
Date			
Scale			
1:2 @ A3			