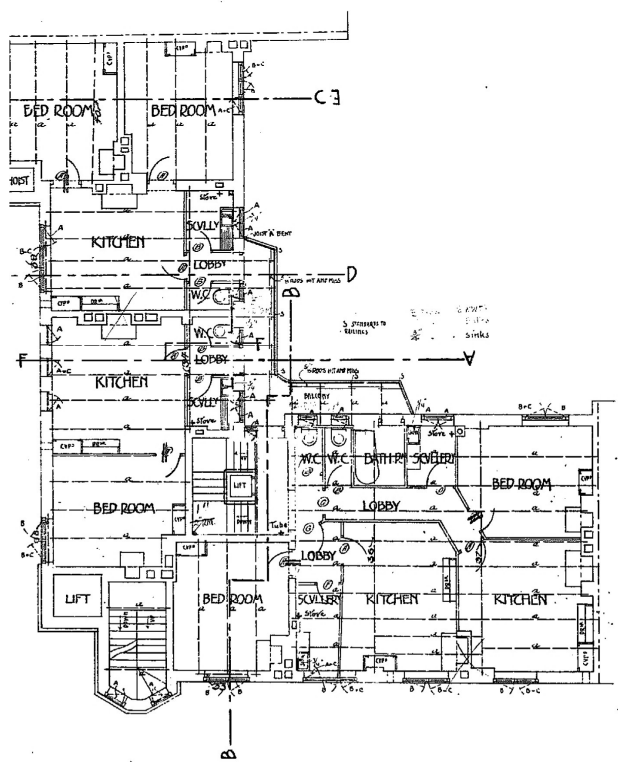
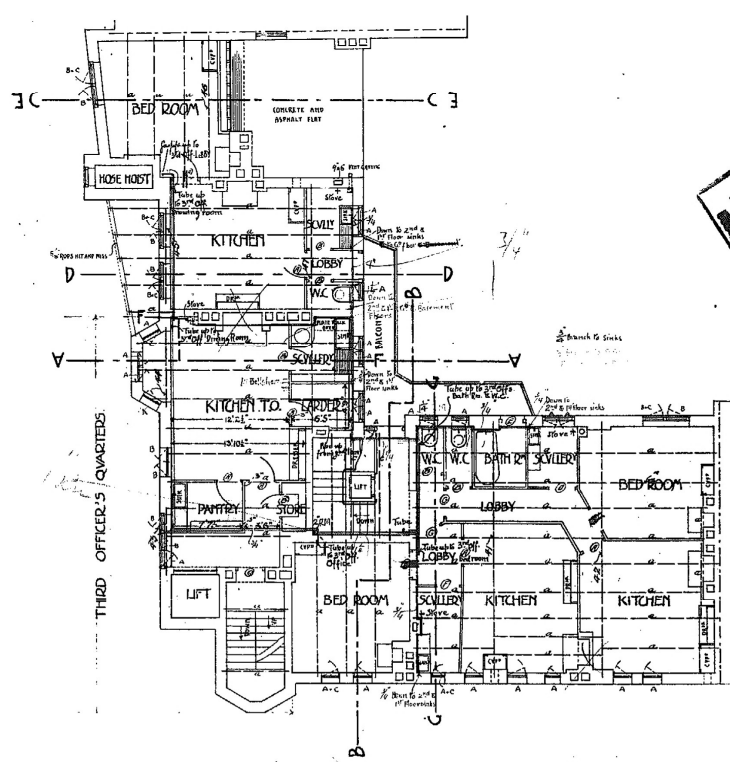


FIRE BRIGADE STATION EVSTON ROAD



SECOND FLOOR PLAN



THIRD FLOOR PLAN

ARCHITECT'S RECORDS
TO BE MAINTAINED WITH THE ORIGINAL DRAWINGS
DATE: 1.12.1953

1710

R.S.J.
4.6x2.104.66
6.0x12.0
6.0x15.0
6.5x15.0

LONDON COUNTY COUNCIL
ARCHITECT'S RECORDS
& PLAN ROOM
6 APR 1953
S.B.B. COUNTY HALL, S.E. 1
Reg. **A 51 702**

LONDON COUNTY COUNCIL
ARCHITECT'S DEPARTMENT
FIRE BRIGADE BRANCH
17 CAN OF ARCH. 1953
REGD. NO. 1086
MADE BY *ape* EXD BY

W.S. Riley
Superintending Architect

