

Copyright: All rights reserved. This drawing must not be reproduced without permission.

Only the original drawing should be relied upon. Contractors, sub-contractors and suppliers must verify all dimensions on site before commencing any work or making any shop drawings.

All shop drawings to be submitted to the architect for comment prior to fabrication.

This drawing is to be read in conjunction with the architect's specification, bills of quantities / schedules, structural, mechanical & electrical drawings and all discrepancies are to be reported to the architect.

Do not scale from this drawing. Dimensions are in millimetres unless otherwise stated.

## NOTES

**NOTE:**  
**ALL ELECTRICS INC TYPE AND POSITION TO BE AGREED ON SITE WITH CLIENT PRIOR.**

### ELECTRICAL LEGEND

- RECESSED LED LOW VOLTAGE DOWN LIGHT  
(TO BE PROVIDED WITH FIRE RESISTING HOODS IF REQUIRED)  
(denotes directional)
- DECORATIVE WALL LIGHT (MIN 40 LUMENS/ CIRCUIT WATT EFFICACY) ALLOW FOR APPROPRIATE DIMMERS WHERE INDICATED
- CEILING MOUNTED PENDENT LIGHT
- RECESSED WARM WHITE WALL LIGHTS - LOW LEVEL
- 'MINI' RECESSED WARM WHITE LED DOWN LIGHT
- LED STRIP LIGHTING
- 1500MM LONG FLUORESCENT BATTEN LIGHTS
- WALL MOUNTED EXTERNAL IP54 RATED SCONCE WITH DUSK TIL DAWN DIODE WITH SWITCHED OVERRIDE INTERNALLY ENERGY EFFICIENT (MIN 40 LUMENS/ CIRCUIT WATT EFFICACY)
- RECESSED EXTERNAL IP RATED LED FLOOR LIGHT
- EXTRACT FAN WITH ISOLATOR SWITCH AT HIGH LEVEL TO OUTSIDE
- SAMP CIRCUIT
- TWIN 13A POWER SOCKET \* denotes Integrated Dual USB Charging Capability
- TWIN 13A POWER SOCKET AT WORKTOP HEIGHT
- SWITCH - ONE WAY, TWO WAY, THREE WAY
- NUMBER OF SWITCHES
- DIMMER
- SPUR SWITCHES TO REMOTE APPLIANCES IN CENTRAL LOCATION TO KITCHEN SPECIALIST DESIGN
- TWIN CO AXIAL/ SATELLITE TV OUTLET
- TELEPHONE PHONE SOCKET
- CAT6 DATA POINT HARD WIRED BACK TO MAIN HUB (NUMBER OF OUTLETS AS INDICATED)
- VIDEO ENTRY
- ALARM CONTROLS
- ELEC UNDERFLOOR HEATING CONTROLS
- INTERLINKED MAINS OPERATED SMOKE DETECTION WITH INTEGRAL SOUNDER AND EMERGENCY LIGHT, AND BATTERY OVERRIDE.
- INTERLINKED MAINS OPERATED HEAT DETECTION WITH INTEGRAL SOUNDER AND EMERGENCY LIGHT, AND BATTERY OVERRIDE
- MAINS OPERATED CO DETECTOR
- SHAVER POINT / TOOTHBRUSH CHARGING POINT
- CONNECTION FOR MIRROR LIGHT/DE-MIST

\* All recessed downlights to be fire rated or provided with fire hoods.  
\*\* Allow 30mm clear plaster gap between multiple sockets.  
\*\*\* Electrician to confirm sockets sited in excess of minimum distance from sinks/wet zones after confirmation of final layouts.

Contractor to appoint specialist subcontractor to design and install electrical systems as CDP, including TV, Sky, Data, A/V and alarms/CCTV.

Nest system to be used for CCTV, Thermostats, Smoke, Heat and CO detectors, doorbell/video entry.

OPEN london

architecture • surveying • interior design

www.openlondon.uk.com

mail@openlondon.uk.com

Mermaid House  
2 Puddle Dock  
Blackfriars  
EC4V 3DB

t: 020 7332 2888

project  
12 Chalcot Crescent

client

drawing title  
Proposed Second & Third Floor Plan  
Electrical Layout

drawing status

Planning

scale date drawn by checked by

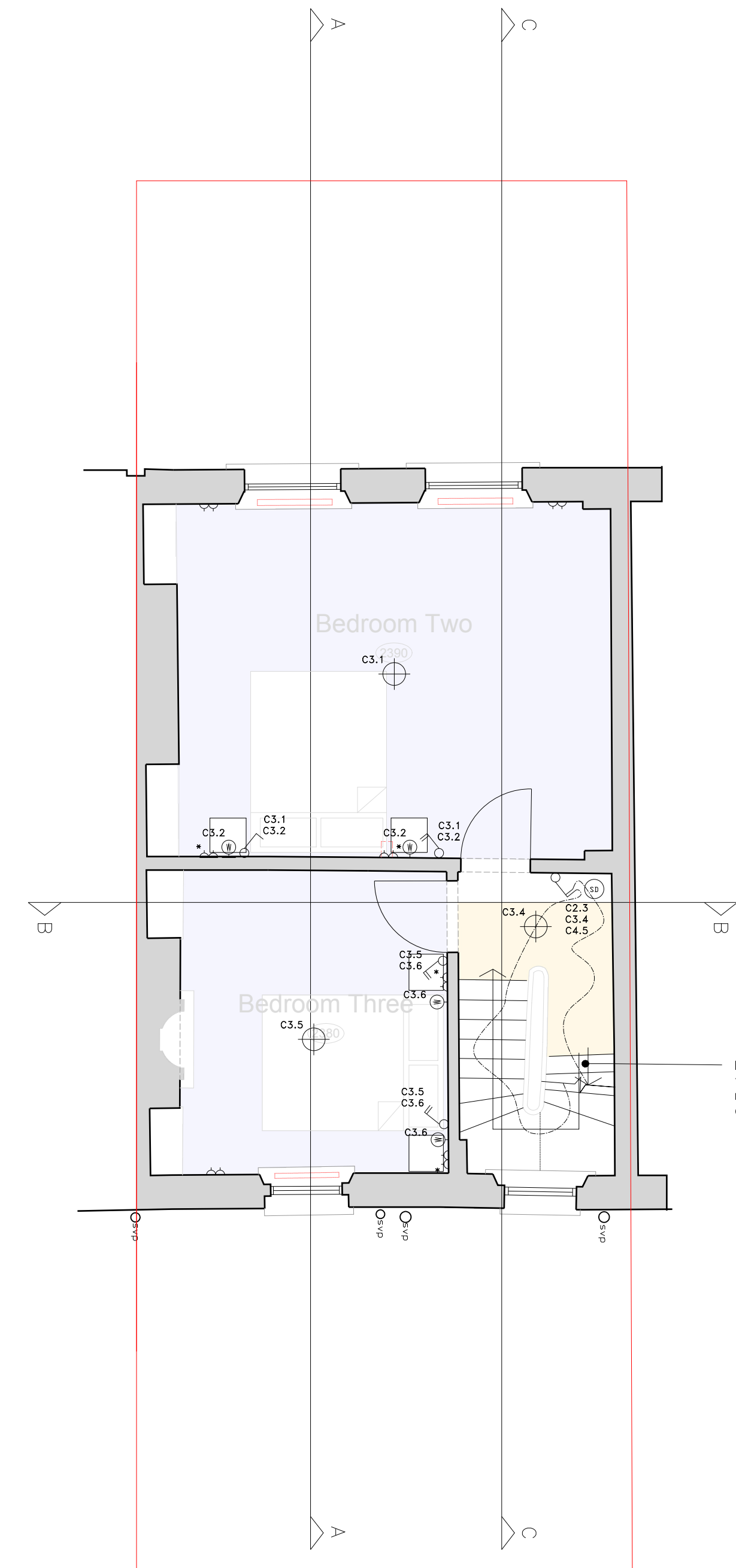
1:50 @ A1 23/08/23

1:100 @ A3

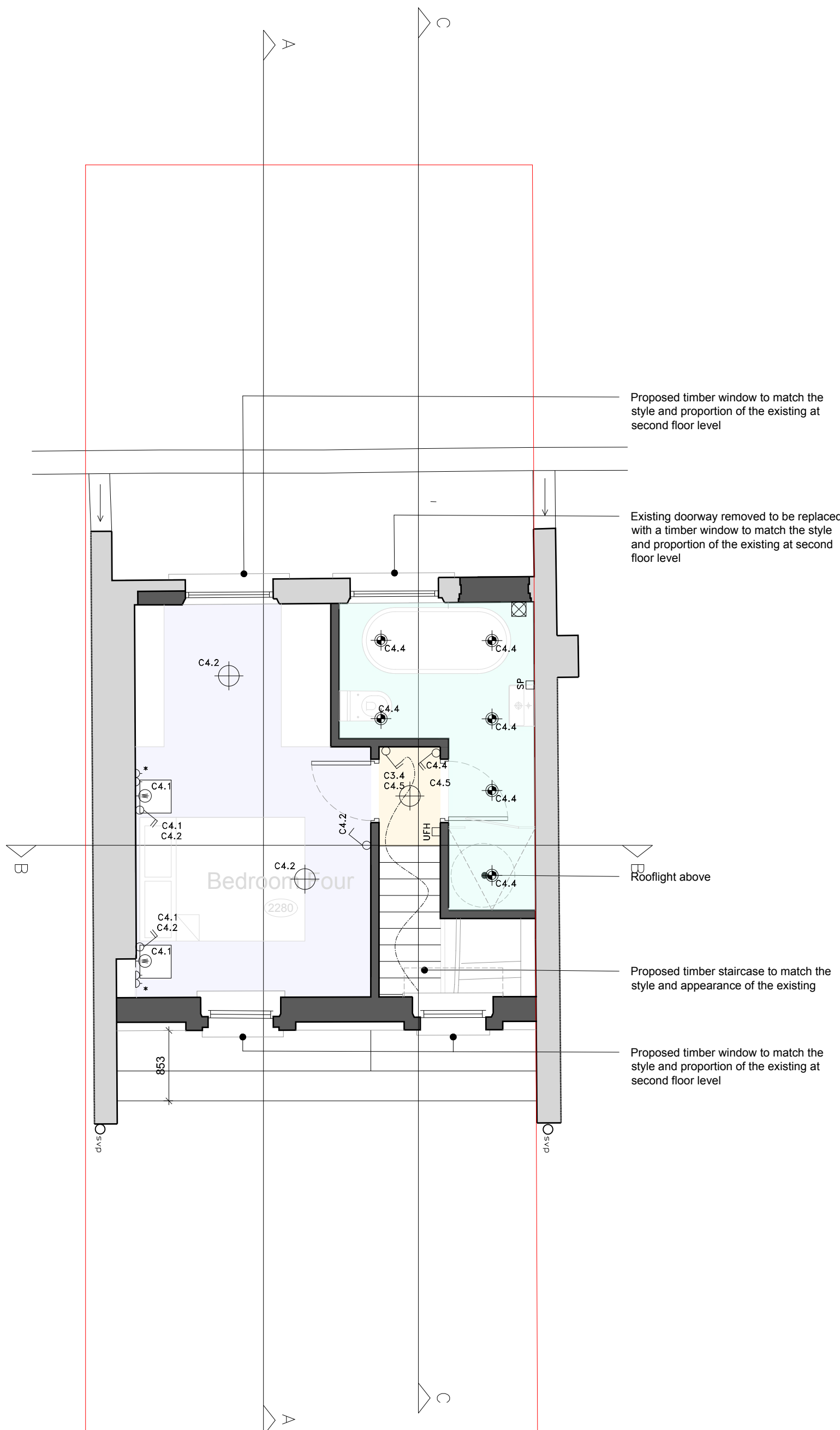
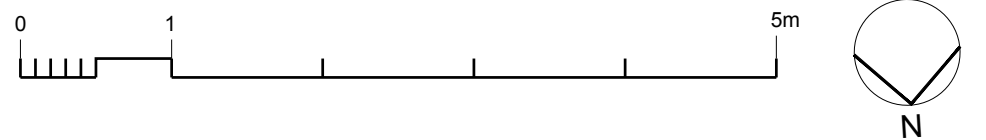
job no. drawing no. revision

23008 112

P1



PROPOSED SECOND FLOOR PLAN



PROPOSED THIRD FLOOR PLAN

