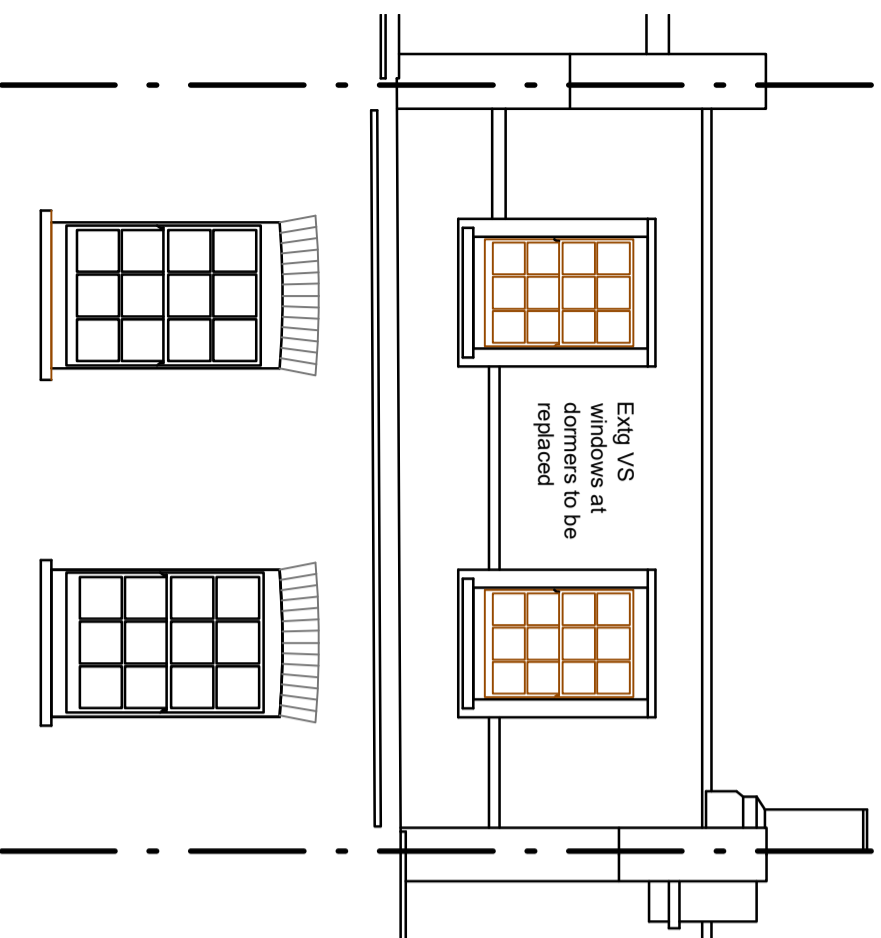
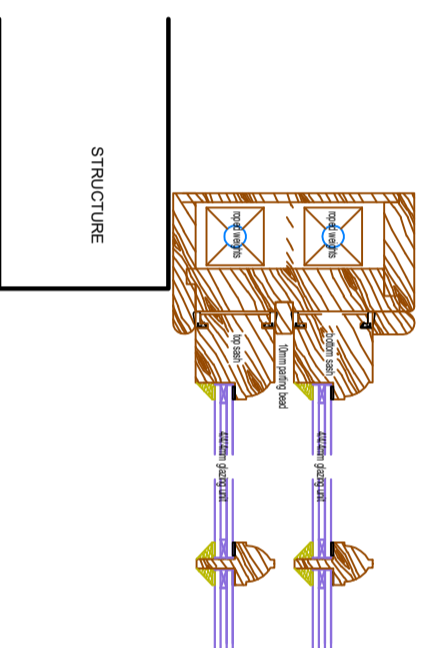


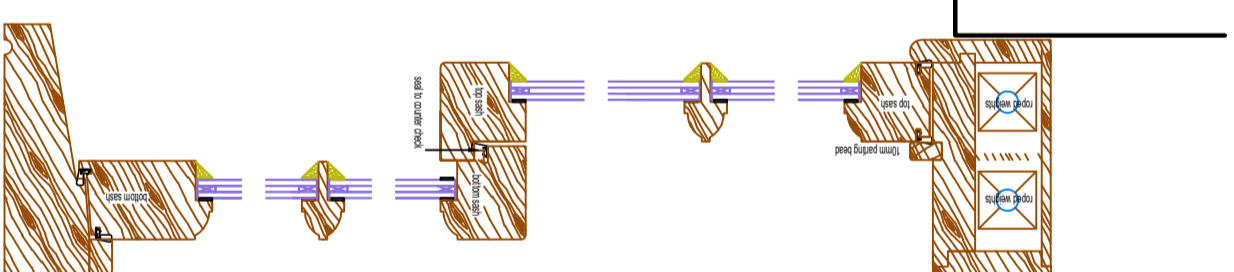
Rev	Description	Date	By
A	Glazing putty added	22/09/23	KWD



## PART ELEVATION SHOWING DORMERS



## WINDOW JAMB DETAIL



## VERTICAL SECTION

### VERTICAL SASH WINDOWS:

#### GENERAL

Windows to be manufactured to British Standard BS4420:2. All timber to be to BS EN 92:2007. Sashes to operate on roged weights with pole eyes to the top sash, two key locking slots and two key operated removable travel limiters 100mm above the transom to give secure, child safe, ventilation & two sash lifts to the bottom rail. Frames to be fully retailed to best preserve original glass sizes. Transom drop at the above limits to be set at existing levels. Tims to be moulded to match in with the original joinery detailing. All glass to be toughened safety glass to BS 6266. All sashlet to be to BS 11800 Cal F1 LM25. Glazing secured with external glazing putty bead.

#### MICROPOROUS PAINT

All windows and tims to have a high grab penetrating preservative base coat. Two coats factory spray applied microporous finish to extend the frequency for repainting from 3 yrs to circa 7-10 yrs. Following installation frames and tims to be given a final touch up where required to leave the installation in a finished condition.

#### WEATHER RESISTANCE

For enhanced airtightness windows to have two lines of brushpile weatherstrip on the opposing faces of the bottom rods and parting beads with additional brushpile weather strips facing the edge of the sashes. Transoms to have chamfered interlocks.

#### THERMAL PERFORMANCE

Centre pane rate of heat loss to be 1.2w/m<sup>2</sup>K to reduce single glazed heat loss by 80%.

#### NOISE REDUCTION

Rockwool insulation quilt to be packed into all voids. Reduction in mid frequency noise transmission to be circa 28 db equivalent to a 70% reduction in noise intensity at source.

#### PRODUCT LIFESPAN

With appropriate maintenance the projected effective lifespan should exceed 50 years.

#### QUALITY CONTROL AND LONG TERM PROTECTION

Instucted work to be covered by insurance that guarantees completion to the standards specified at the original cost. Payment subject to independent inspection to ensure all aspects of the work have been delivered to the standards specified. Following payment, all work covered by 10 yr insurance protection against contractor failure & loss of Guarantee.

DATE	SCALE	DRAWN	SHEET	STATUS	REV
22 May 2022	1:20	K. Duncan	A3	Local Authority	A
<b>TriPyramid Limited</b>				<b>749-PC-03</b>	

VS Windows for Dormers

Proposed Alterations to House

**15 COLVILLE PLACE, LONDON, W1**

**KEN DUNCAN MCIAT**  
BUILDING DESIGN ARCHITECTURAL TECHNOLOGY INTERIOR DESIGN



2 Glen Royal, Glenburn Road, Rothesay.  
ISLE of BUTE, PA20 9JP

m: 07311 266105 e: kenduncanid@gmail.com