

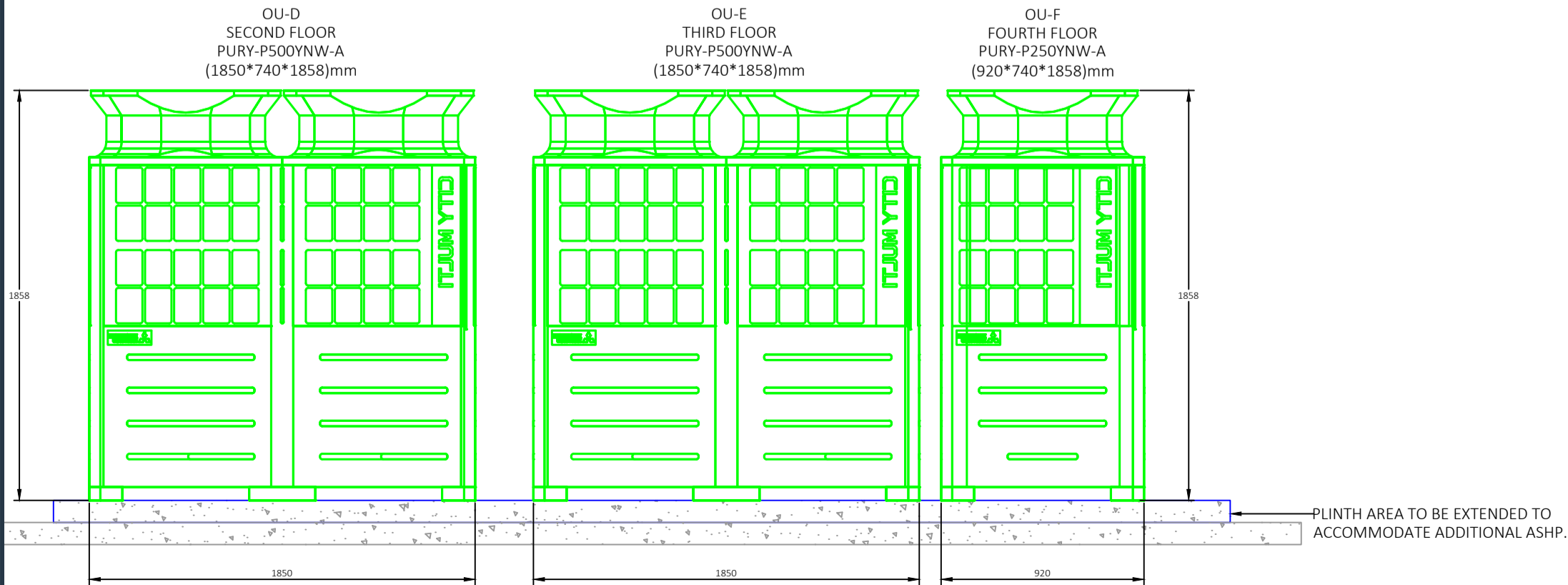
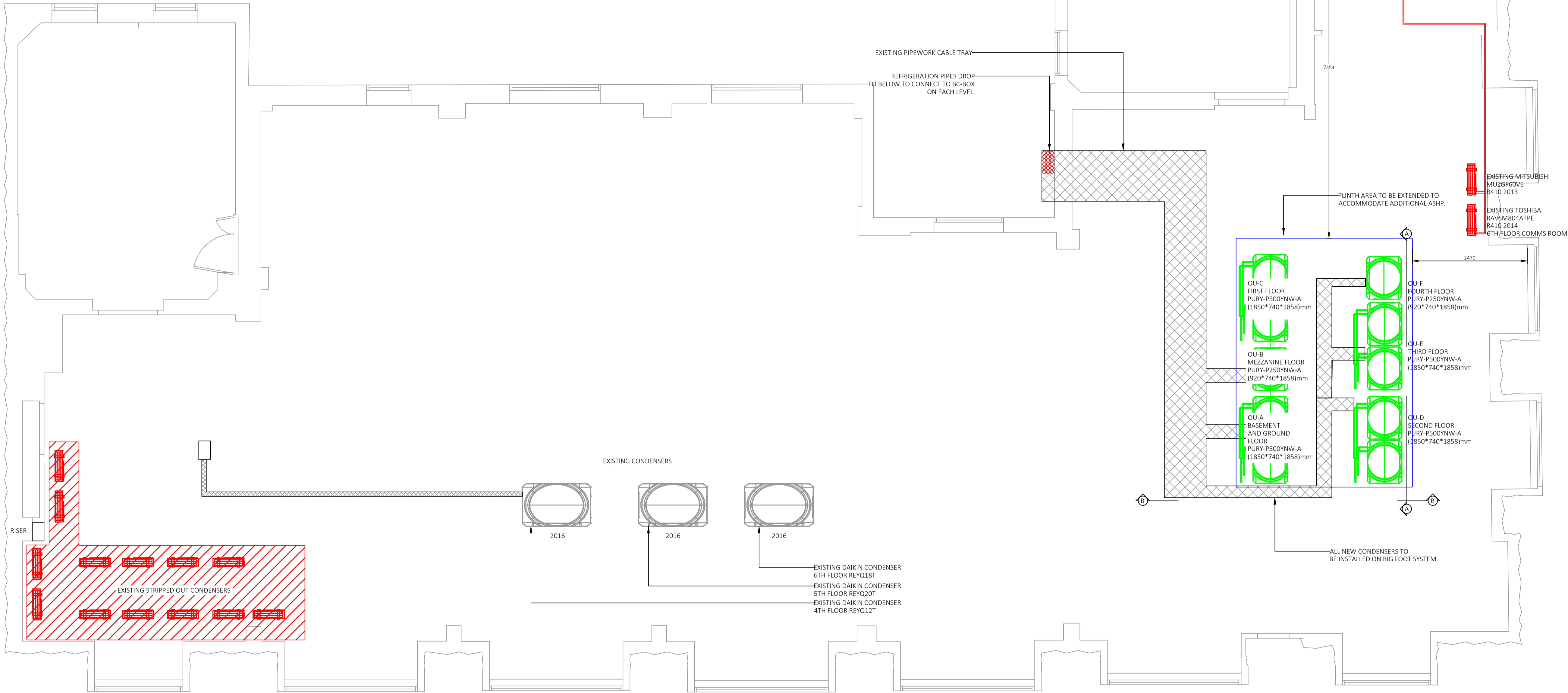
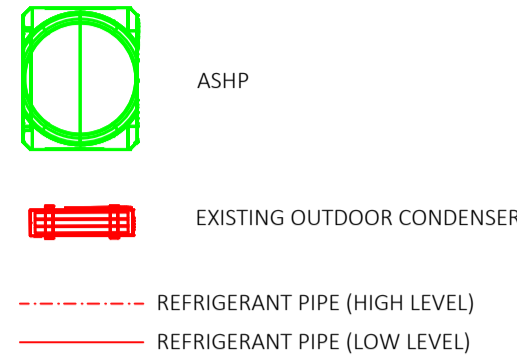
ASHP Manufacturer		Mitsubishi Electric
MODEL		PURY-P500YNW-A
Quantity		4
COOLING(UK)	Capacity (kW)	50.1
HEATING	Capacity (kW)	63.0
COP/EER		4.12/4.40
Maximum Number of connection		50
SOUND PRESSURE LEVEL AT 1M (dBA)-Heating/Cooling		64/63.5
FLOW RATE(m3/min)		185
DIMENSIONS (mm)	Width	920+920
	Depth	740
	Height	1858
WEIGHT (kg)		229+229
ELECTRICAL SUPPLY		380/415v,3Ph, 50Hz
NOMINAL RUNNING CURRENT [MAX] (A)-Heating/Cooling		23.6
FUSE RATING - MCB SIZES (A) ⁴		1*50

ASHP Manufacturer		Mitsubishi Electric
MODEL		PURY-P250YNW-A
Quantity		2
COOLING(UK)	Capacity (kW)	25.1
HEATING	Capacity (kW)	31.5
COP		5.19/4.69
Maximum Number of connection		25
SOUND PRESSURE LEVEL AT 1M (dBA)-Heating/Cooling		61/60.5
FLOW RATE(m3/min)		185
DIMENSIONS (mm)	Width	920
	Depth	740
	Height	1858
WEIGHT (kg)		229
ELECTRICAL SUPPLY		380/415v,3Ph, 50Hz
NOMINAL RUNNING CURRENT [MAX] (A)-Heating/Cooling		9.3/9.2
FUSE RATING - MCB SIZES (A) ⁴		1*20

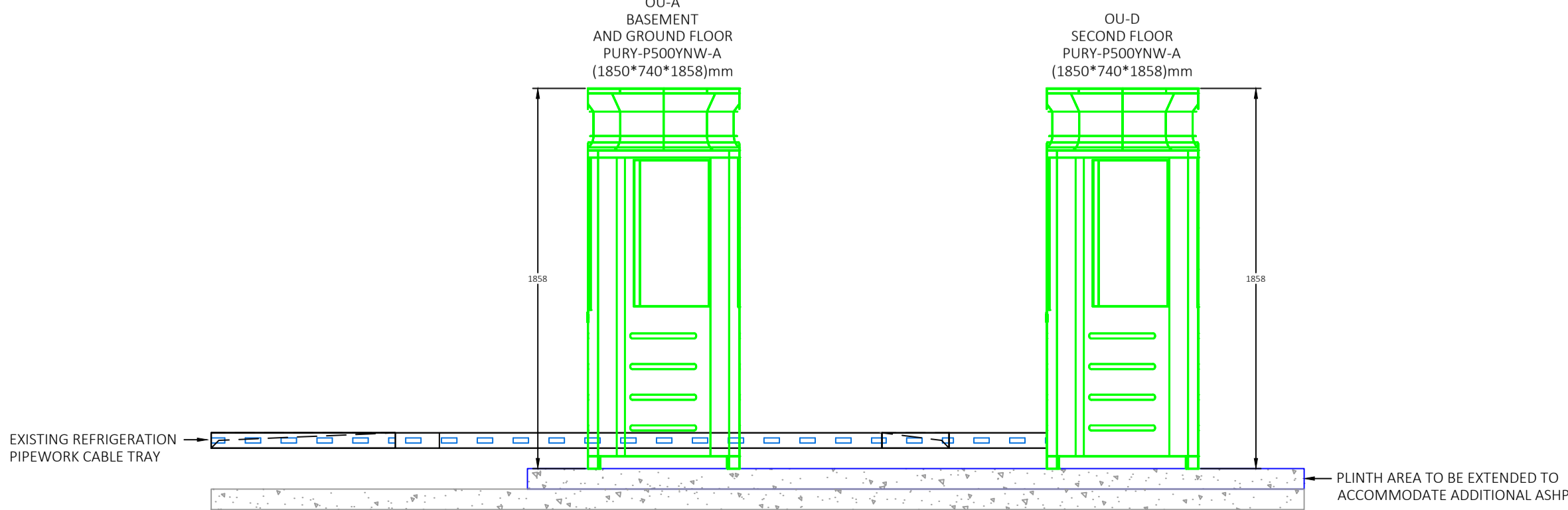
These details are confidential to illustrate the engineering services only for the purpose intended. Arrange to suit current architectural and structural details which may vary to some degree from these details. This drawing must be viewed and printed using Adobe Acrobat Version 9.0 or above when using as a PDF format.
Do not scale from this drawing in either paper or digital format. To check the drawing has been printed at the intended scale this bar should be 25mm long at A3, 50mm long at A1 and 75mm long at A0.

- Notes
- THIS DRAWING SHOULD BE READ IN CONJUNCTION WITH ALL OTHER CONTRACT DOCUMENTATION.
 -

LEGEND



SECTION A



SECTION B

0	TENDER ISSUE	VG	MB	IL	26.06.2023
REV	AMENDMENTS	DRAWN	CHECKED	APPROVED	DATE
CLIENT CVCP PROPERTIES PLC					
PROJECT WOBBURN HOUSE 20 TAVISTOCK SQUARE, WC1H 0HW					
TITLE PROPOSED ROOF HEATING AND COOLING LAYOUT					
DRAWING NUMBER 11030-CBG-XX-RF-DR-PR-M-13001		SCALE 1:50 @A1		REVISION 0	
STATUS TENDER		DO NOT SCALE		©CBG Consultants Ltd	

OXFORD LONDON
T:01865 864500 T:020 7387 4175