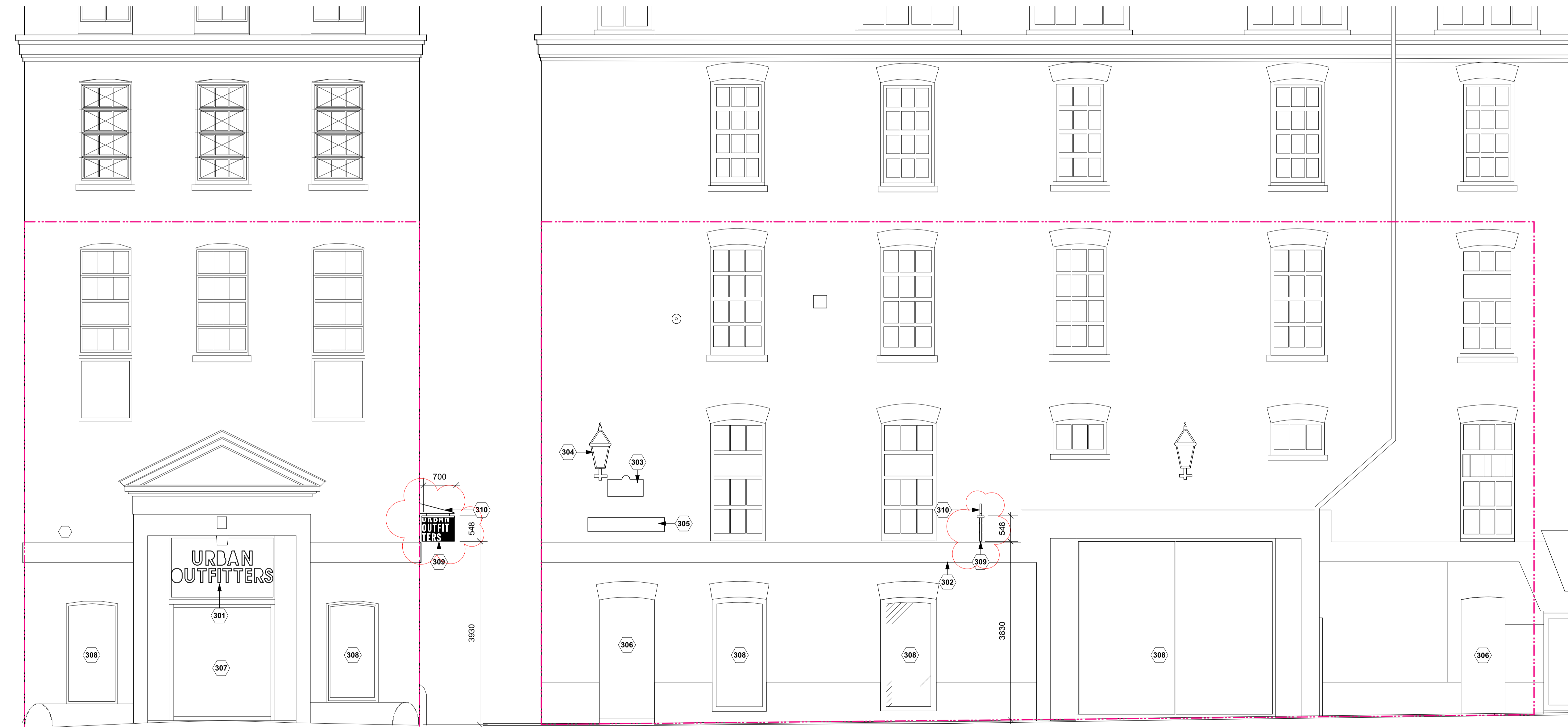


KEY NOTES

- 301 EXISTING MAIN SIGN ABOVE ENTRANCE DOOR
- 302 EXISTING RENDERED FACIA PAINTED BLACK
- 303 EXISTING STREET SIGN 'ERLHAM STREET'
- 304 EXISTING SREET LIGHT
- 305 EXISTING LOUVERS - VENTILATION
- 306 EXISTING FIRE EXIT DOOR.
- 307 EXISTING SHOP ENTRNACE DOOR
- 308 EXISTING SHOP WINDOW
- 309 PROPOSED BLADE SIGN, EARLHAM STREET, ALUMINUM FRAMING BRACKET STRAP ON ALL FOUR SIDES FIXED TO STORE FRONT, BOTH SIGNAGE SIDES POWDER COATED (BLACK RAL 9005) ALUMINIUM SHEETS WITH LASER-CUT 'URBAN OUTFITTERS', ACRYLIC CUT LETTERS (WHITE 9010), EXTERNALLY ILLUMINATED FROM TOP FRAME EXTENDED BEYOND SIGNAGE TO CREATE POCKET FOR LIGHT FIXTURE (WIDTH 150MM, HEIGHT 38MM) WITH IPX6 FLEXIBLE LED STRIP LIGHT MOUNTED WITHIN 45 DEGREE CORNER ALUMINIUM EXTRUSION. END PLATE RETURN ON BOTH SIDES OF SIGN.
- 310 SIGN HANGING BRACKET, 40MM WIDE ALUMINIUM STRIPS, (BLACK RAL 9005), WELDED AND SCREW FIXED TO EXISTING FACADE

GENERAL NOTE:

MAXIMUM EXTERNAL ILLUMINATION LEVELS SHOULD BE LESS THEN 400CD/M².



For Office Use: A_12629

URBAN OUTFITTERS

UO Covent Garden
Warehouse
42-56 Seven Dials, Earlham St
London
WC2H 9LJ

CONSULTANT :

DRAWN BY:
AB

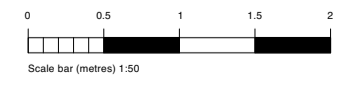
ISSUE / DATE:
PLANNING 13.06.2023

REVISION :

A 13/07/23	SHELTON ST SIGN OMITTED, EARLHAM SIGN POSITION AND EXTERNAL ILLUMINATION	AB
B 19/07/23	LUMINANCE LEVELS ADDED	AB
C 18/08/23	Hanging bracket added and size reduced.	AB
D 22/08/23	Sign Height changed	AB

SHEET TITLE :
**PROPOSED FRONT
AND EARLHAM
ELEVATION**

SHEET NO. :
PL300



Figured dimensions shall be taken in preference to scaled dimensions and any discrepancies or errors are to be referred to the Designer. Contractors, sub-contractors and suppliers must verify all dimensions on site before commencing work or making any fabrication drawings. © Copyright Reserved