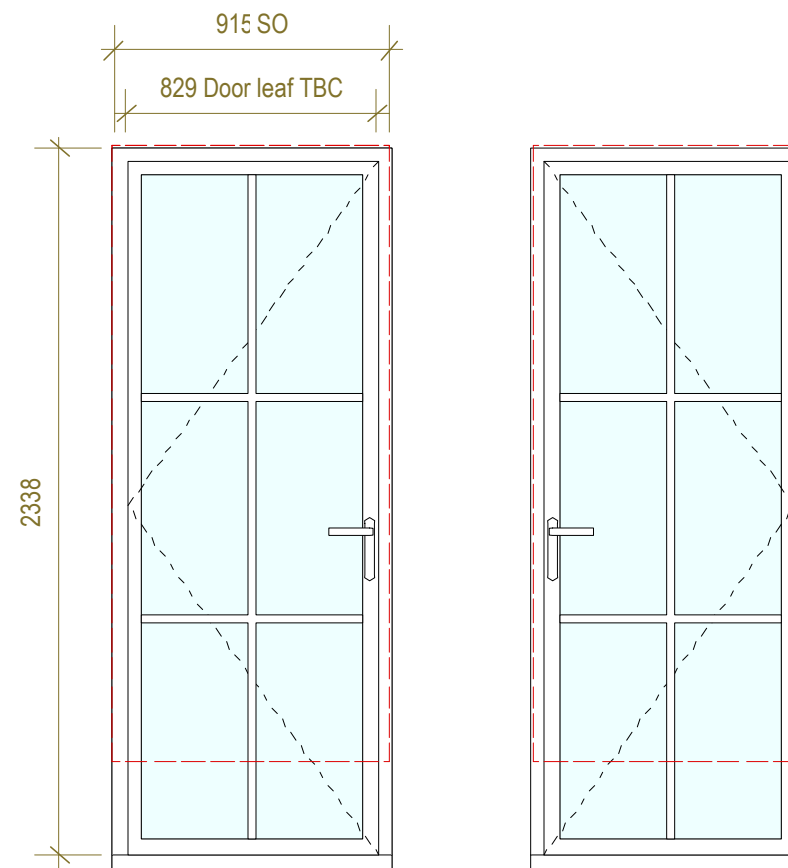
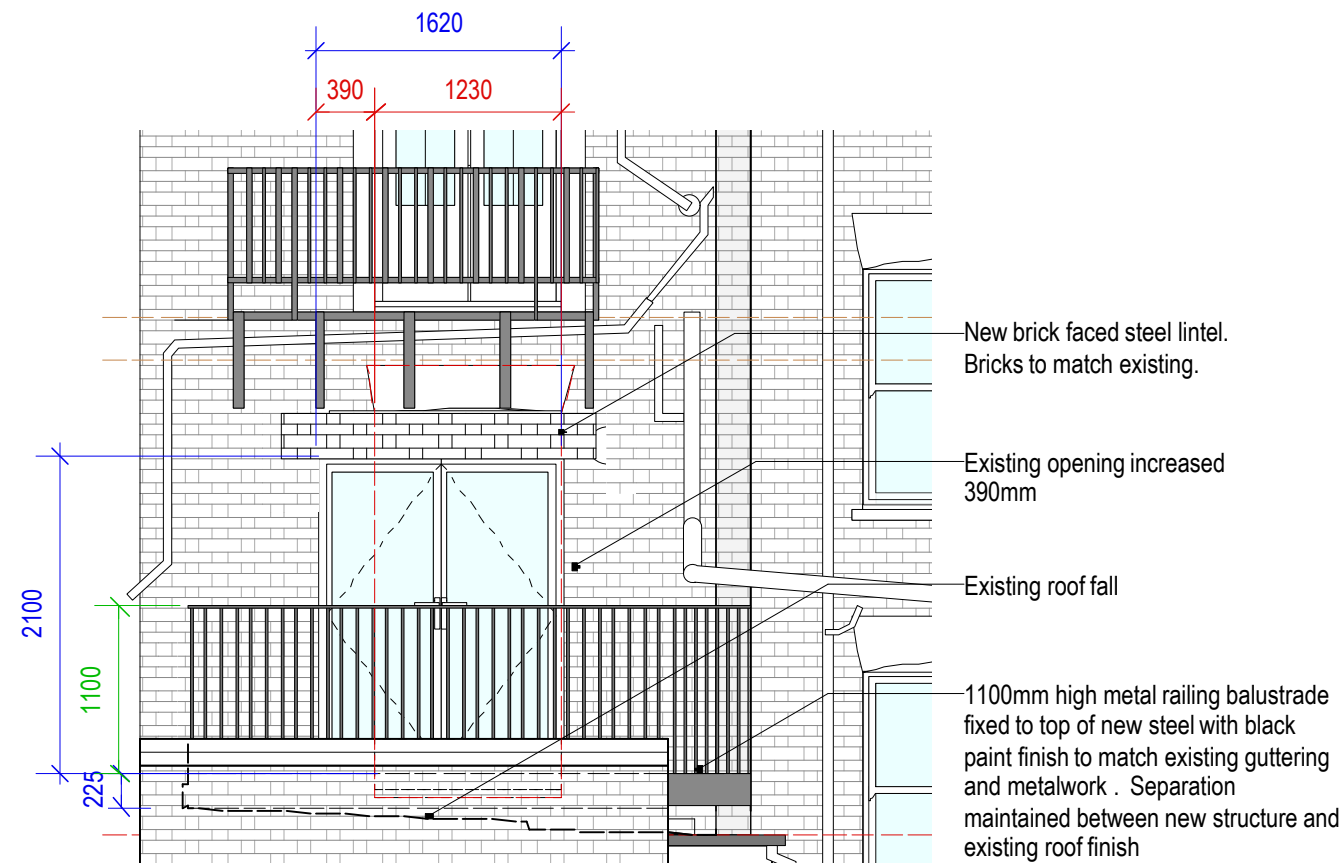


1 Proposed Rear Bedroom Terrace Elevation
Scale: 1:50

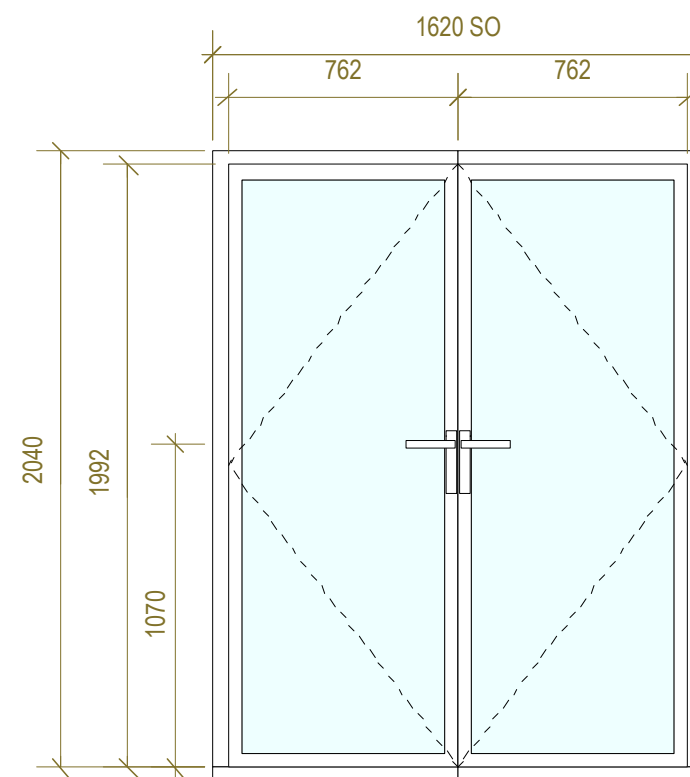


- White finish double glazed doors - outward opening
- Astragal detailing to interior and exterior of glass.
- Hardwood sill with waterproof flashing beneath
- U value 1.4 W/m2K minimum (doorset energy rating C)
- IRONMONGERY
 - Multipoint lock kit
 - PAS 24 accredited.
 - Brass internal ironmongery
 - White handle external
 - Handle height approx 1070mm

2 Bedroom terrace doors
Scale: 1:25



3 Proposed Rear Elevation
Scale: 1:50



- White finish double glazed doors - outward opening
- Hardwood sill with waterproof flashing beneath
- IRONMONGERY
 - Multipoint french door lock kit or similar approved.
 - PAS 24 accredited.
 - Stainless steel face plates
 - Lock and save door lock
 - Top and bottom rebated shoot bolts
 - Handle height approx 1070mm

4 Kitchen terrace doors
Scale: 1:25