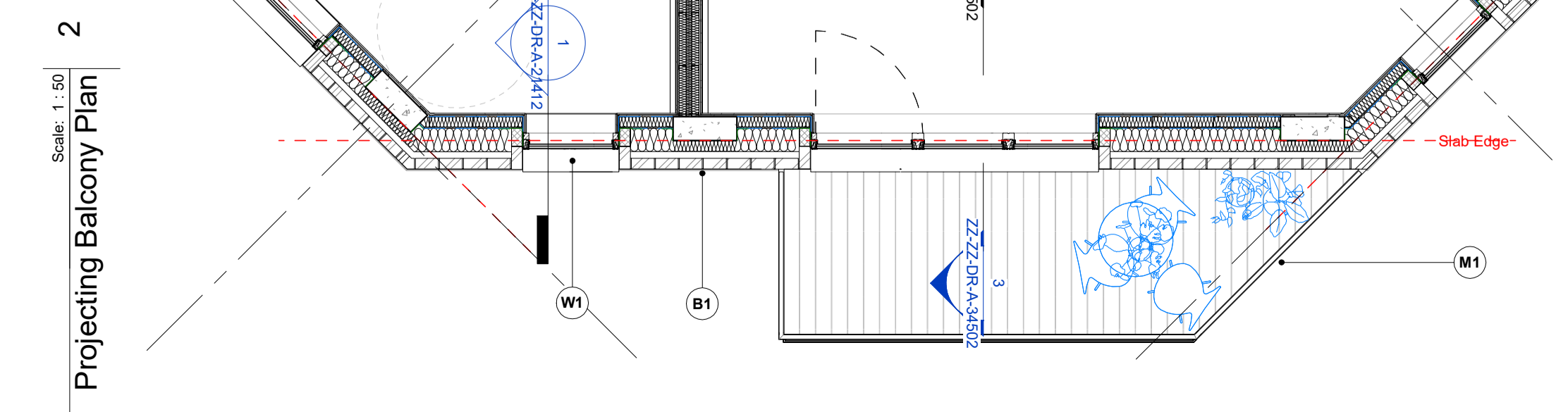
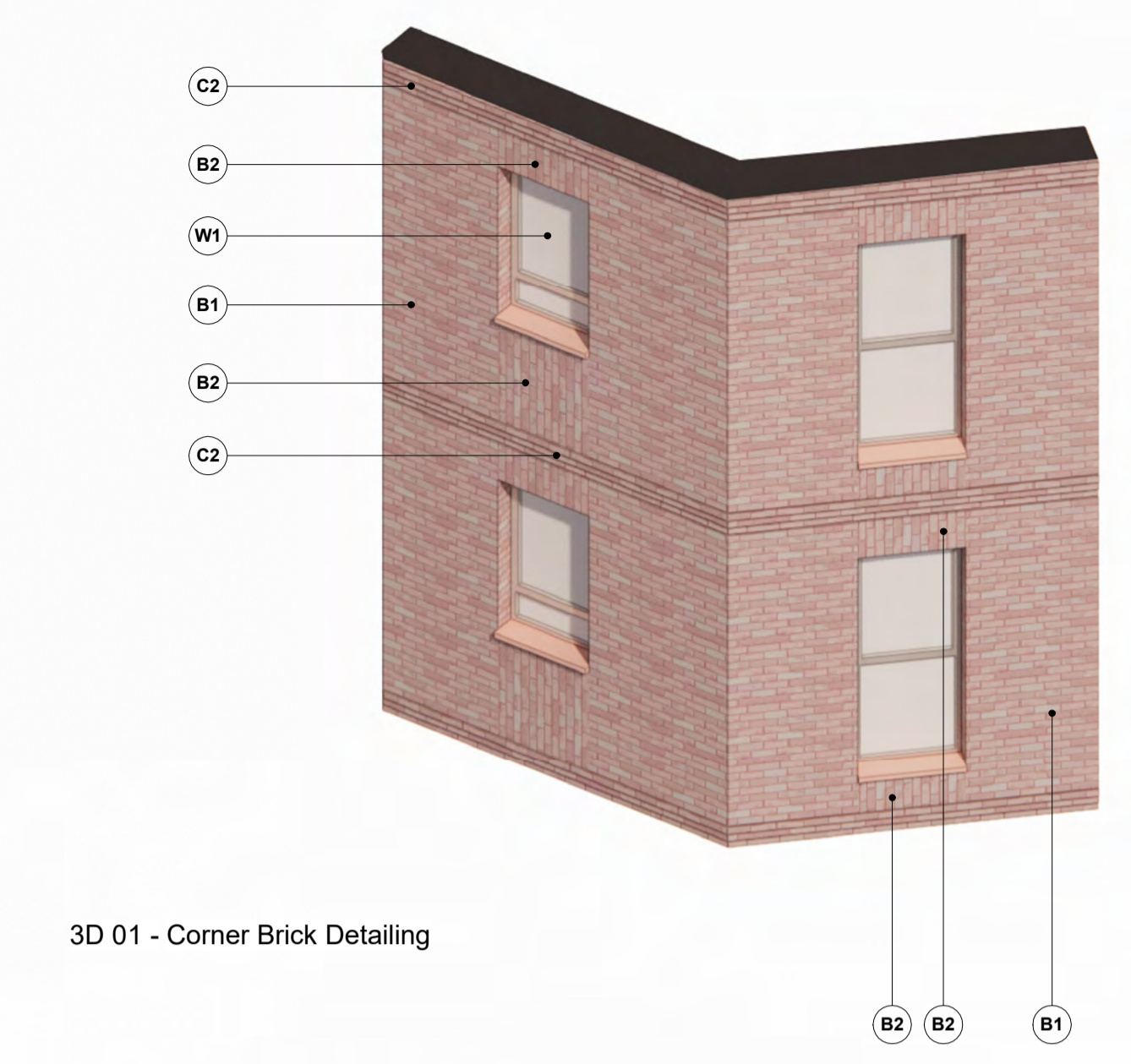


1 Block C - Projecting Balconies
Scale: 1:50

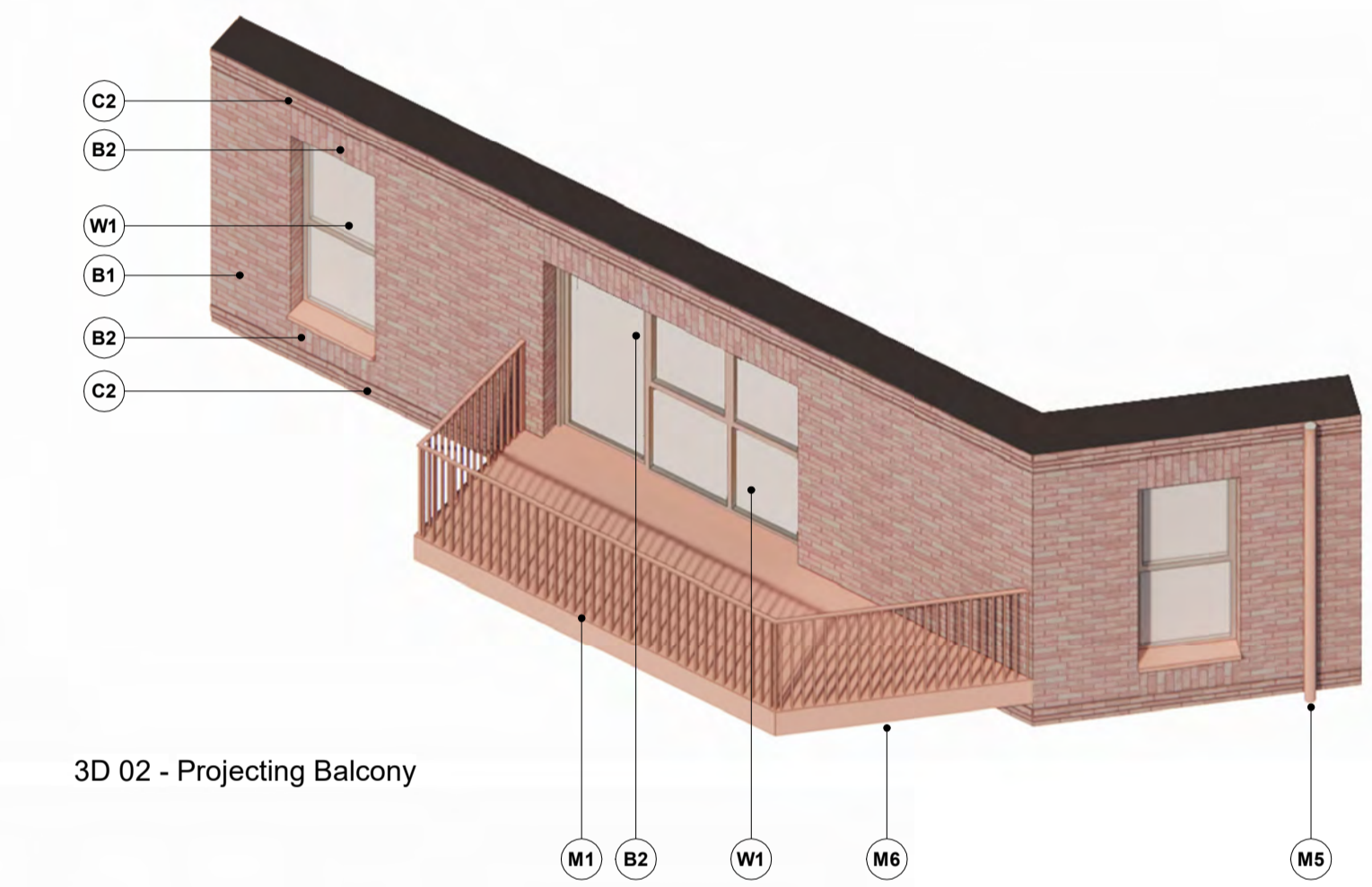
3 Projecting Balcony Block C
Scale: 1:50



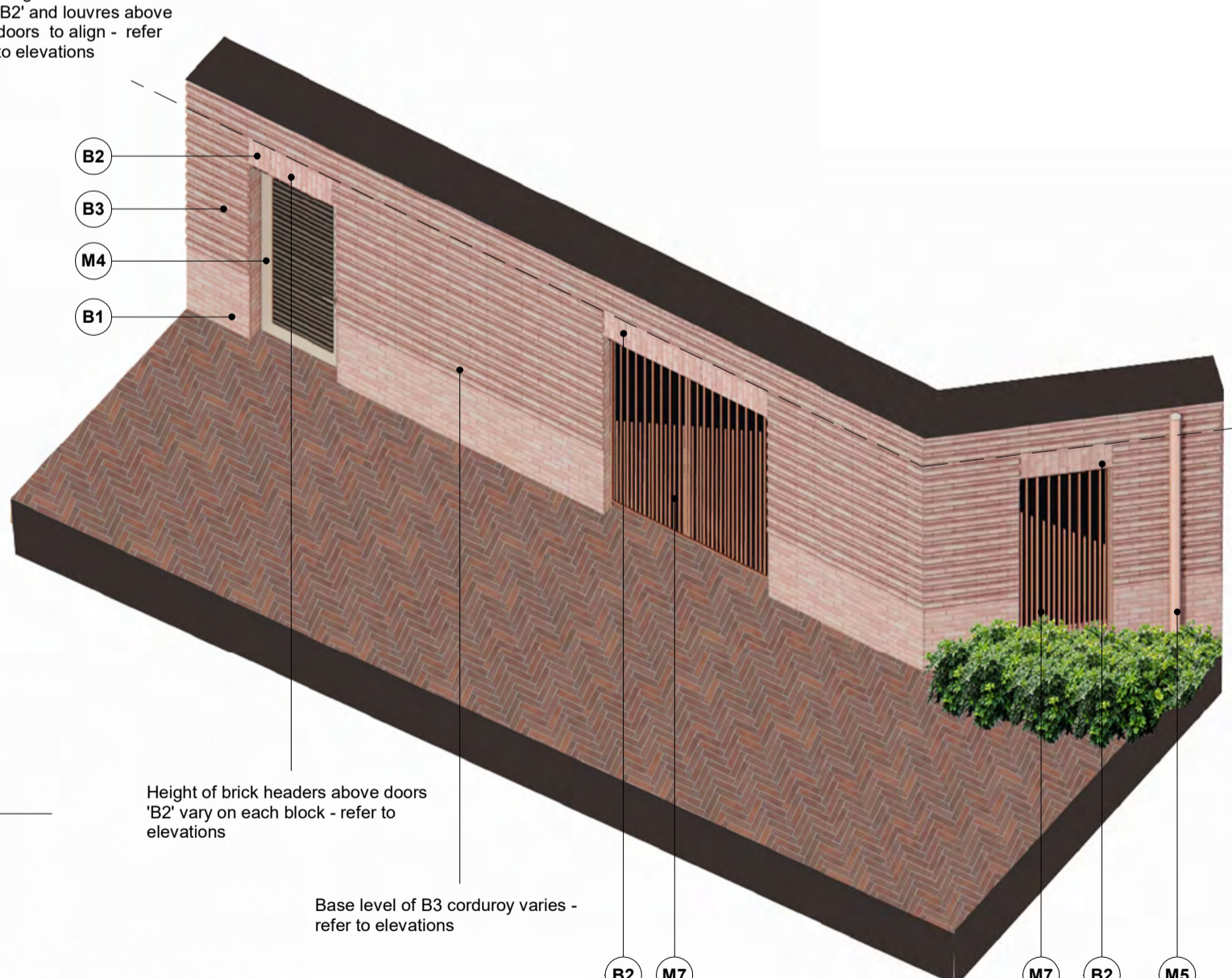
2 Projecting Balcony Plan
Scale: 1:50



3D 01 - Corner Brick Detailing



3D 02 - Projecting Balcony



3D 03 - Ground Floor Corduroy Brick

GENERAL NOTES:
This drawing is © 2019 Pollard Thomas Edwards LLP (PTE).
Use figured dimensions only. **DO NOT SCALE.**
All dimensions are in millimetres unless noted otherwise.
If in doubt, ask.

SETTING OUT NOTES:
All setting out to be confirmed on site prior to construction - any discrepancy must be immediately reported to the Architect.
All setting out to face of structure or to grid. All partitions set out to studwork or structure.
For setting out and specification of M&E services refer to M&E Consultants documents.
For setting out and specification of structure refer to Structural Engineer's documents.

This drawing must be read in conjunction with all other relevant drawings and specifications from the Architect and other consultants.

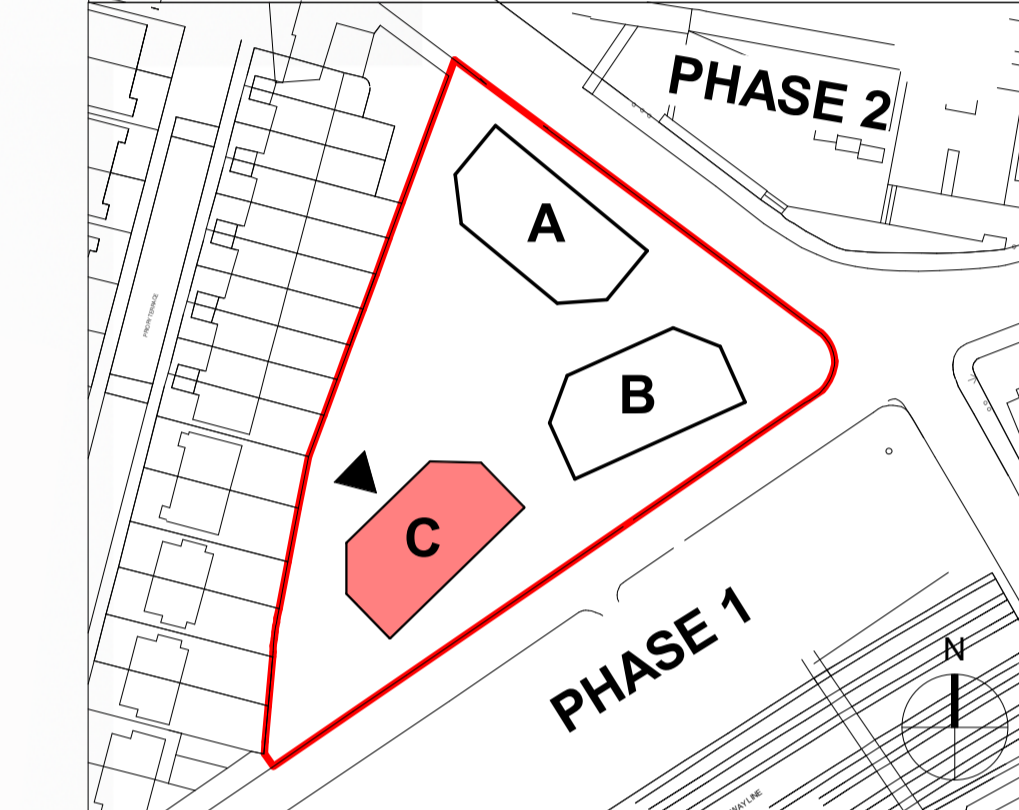
Scale: 0.5 0 0.5 1 2.5 m
Metres

NAMING CONVENTION KEY

Project Code	Consultant	Volume	Level	Doc Type	Role	Drawing Number
XXXX	PTE	ZZ	ZZ	XX	A	00001

Package /Series

- Drawing Notes**
- Structural setting-out based on Revit models received from Stanton on 28.07.23
 - Civil setting-out based on Revit models received from Stanton on 28.07.23
 - MEPH setting-out based on Revit model received from OCSG on 25.07.23
 - Landscape setting-out based on Revit model received from Fabris on 02.03.23
 - All information to be read in conjunction with latest Fire Report, produced by OFR
 - Refer to consultant drawings, reports and specifications for further information to their disciplines
 - All architectural drawings to be read in conjunction with Architectural Specification, produced by PTE
 - All information to be read in conjunction with latest Acoustic Report, produced by RBA
 - All details subject to Building Warranty and Building Control approval
 - Contractor to verify all conditions, levels and dimensions on site and notify of any variations
 - All items to comply with relevant planning approvals and conditions (to be discharged)
 - Window and door openings to be confirmed on site by specialists
 - Roof anchor points shown indicatively - subject to specialist design and specification



KEY PLAN

- MATERIALS KEY**
- B1 Brick - Rosado by Nelissen Bricks:** Stretcher bond, colour matched light mortar with flush joints
 - B2 Brick - Rosado by Nelissen Bricks:** Vertical stretcher bond, colour matched light mortar with flush joints
 - B3 Brick - Rosado by Nelissen Bricks:** Corduroy (every other brick course), colour matched light mortar with flush joints
 - Z1 Main entrance façade:** Glazed brick, E4 Smith Eden Green (or similar).
 - Z2 Bolt-on balconies:** Sapphire or similar, PPC in RAL 3012 Beige Red
 - Z3 Pink colour concrete balcony deck:** Specification tbc, pinky colour tbc, 50mm projection and ca. 327.5mm horizontal extension
 - Z4 Pink colour precast banding:** Specification tbc, pinky colour tbc, 327.5 mm horizontal extension
 - Z5 MVHR Air bricks:** Titan FireSafe or equivalent equal approved, RAL 3012 Beige Red to sit within lower two courses of brick banding.
 - Balustrades to inset / projecting balconies:** PPC vertical metal flats, RAL 3012 Beige Red
 - M1 Balustrades to inset balconies at ground floor level:** 300mm high PPC vertical metal flats, RAL 3012 Beige Red on recessed 800mm brick plinth
 - M3 Substation, Plant and Refuse Store louvers:** PPC aluminium, RAL 3012 Beige Red unless specified otherwise below (M10). External sealant to match metalwork.
 - M4 ASHP acoustic screen enclosure:** Single skin brick wall, 3m high with steel cantilever columns to engineer's specification, stretcher bond brickwork, colour matched light mortar with flush joints. Bricks - Rosado by Nelissen Bricks
 - M5 Rainwater pipes and hopperheads:** Manley Alutec or similar, PPC circular aluminium RWPs, RAL 3012 Beige Red
 - M6 Soffits to projecting balconies, ground/top floor inset balconies, commercial entrances and window heads:** PPC aluminium, RAL 3012 Beige Red
 - M7 Cycle Store doors and openings:** PPC 15x100mm frame to door leaf and opening, RAL 3012 Beige Red. 8x50mm full height vertical metal flats twisted at staggering heights. Solid backing panel to be included on openings facing the street, RAL 3012 Beige Red.
 - M8 Main Entrance doors:** Schuco or similar, RAL 6020 MATT to match main entrance green glazed bricks (Z1)
 - M9 Ancillary Space doors:** PPC metal louvre door system, Sunray Doors or equivalent equal approved, RAL 3012 Beige Red, external sealant to match metalwork colour. RAL 7038 to switch room and substation. External sealant to match metalwork colour
 - M10 Refuse Store doors to Blocks B & C:** PPC metal louvre door system, Sunray Doors or equivalent equal approved, green RAL 6020 MATT to match main entrance green glazed bricks (Z1). External sealant to match metalwork colour
 - M11 Commercial Cycle Store doors to Block C:** PPC metal louvre door system, Sunray Doors or equivalent equal approved, RAL 3012 Beige Red, external sealant to match metalwork colour
 - M12 Gate Access to Switchroom and Substation:** PPC 15x100mm frame to door leaf and opening, RAL 3012 Beige Red. 12x35mm full height vertical metal flats twisted at staggering heights.
 - M13 Fixed Railing:** PPC 15x100mm frame to door leaf and opening, RAL 3012 Beige Red. 12x35mm full height vertical metal flats twisted at staggering heights. Security rating:
 - W1 Timber composite / aluminium window:** Idealcomb or similar, RAL 7047 Telegrey 4 with 190mm reveal PPC cill in RAL 3012 Beige Red
 - W2 Commercial curtain walling with sliding door:** Specification tbc, with 190mm reveal, frame to curtain walling RAL 7047 Telegrey
 - C1 Parapet coping:** PPC aluminium coping, RAL 3012 Beige Red
 - C2 Rosado Brick by Nelissen Bricks:** 15mm projecting / 10mm recessed brick detail
 - C3 Bee Bricks:** Minimum of 10 bee bricks (Green and Blue Bee Brick or equivalent) to be provided across the site. To be sited in sheltered and sunny south facing walls at a minimum of 1m above ground overflooking vegetation

S4 - FOR STAGE AUTHORISATION

Diespeker Wharf
38 Graham Street
London N1 8JX
020 7336 7777
forename.surname@ptea.co.uk
@ptearchitects
www.pollardthomasedwards.co.uk

Pollard Thomas Edwards

rev	date	description	drawn	checked
P1	06.03.23	Issued for stage authorisation	DC	DC
P2	18.09.23	Issued for planning conditions	DC	DC

project: Abbey Area Phase 3 - PI job number: 19-049-PI drawn: DC scale: As indicated@A1 date created: Mar'23

drawing title: Bay Study - Projecting Balconies Blocks A, B and C drawing number: ARP3- PTE- ZZ-ZZ-DR-A-34502 P2 S4 revision: Submittal