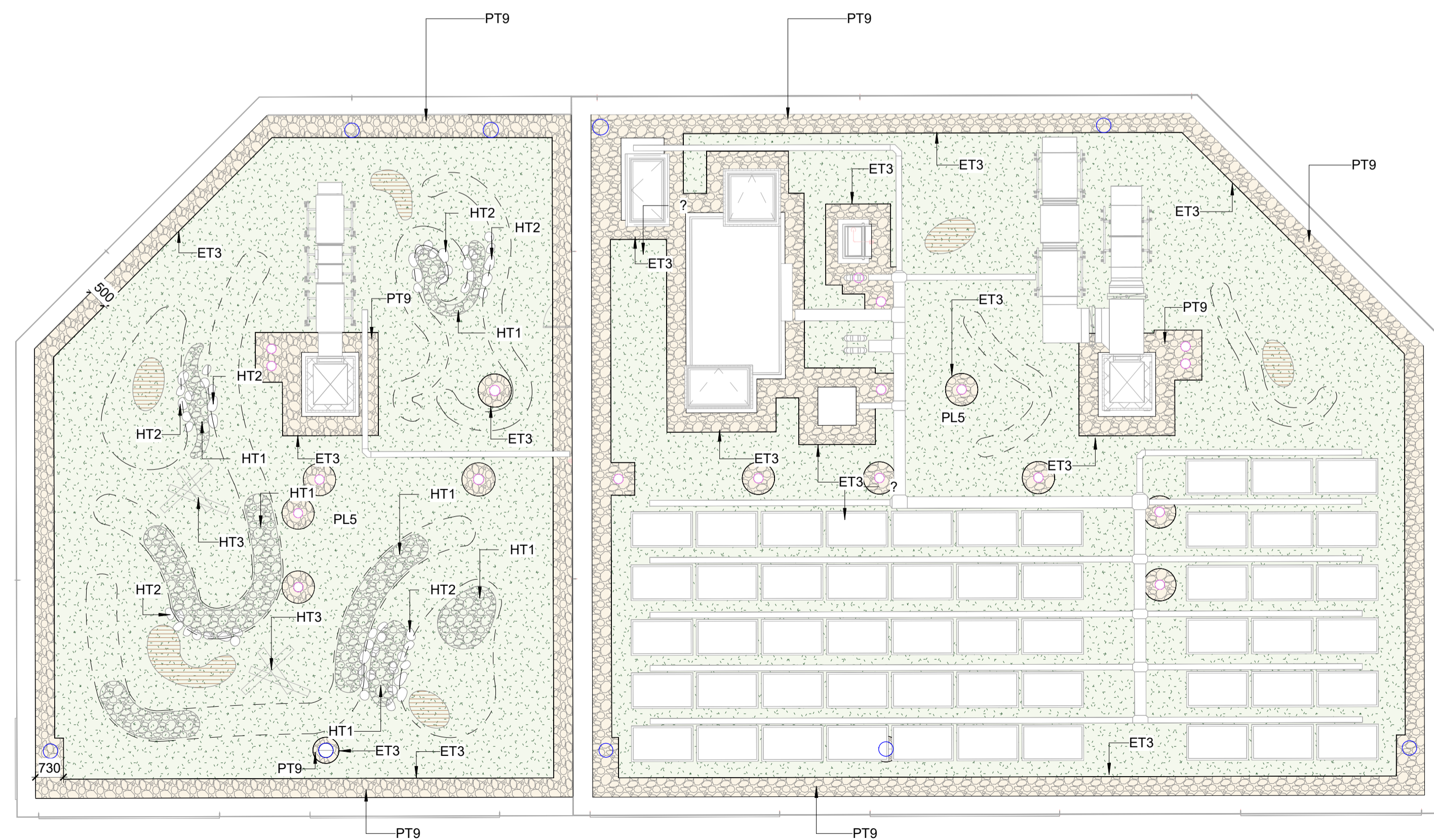
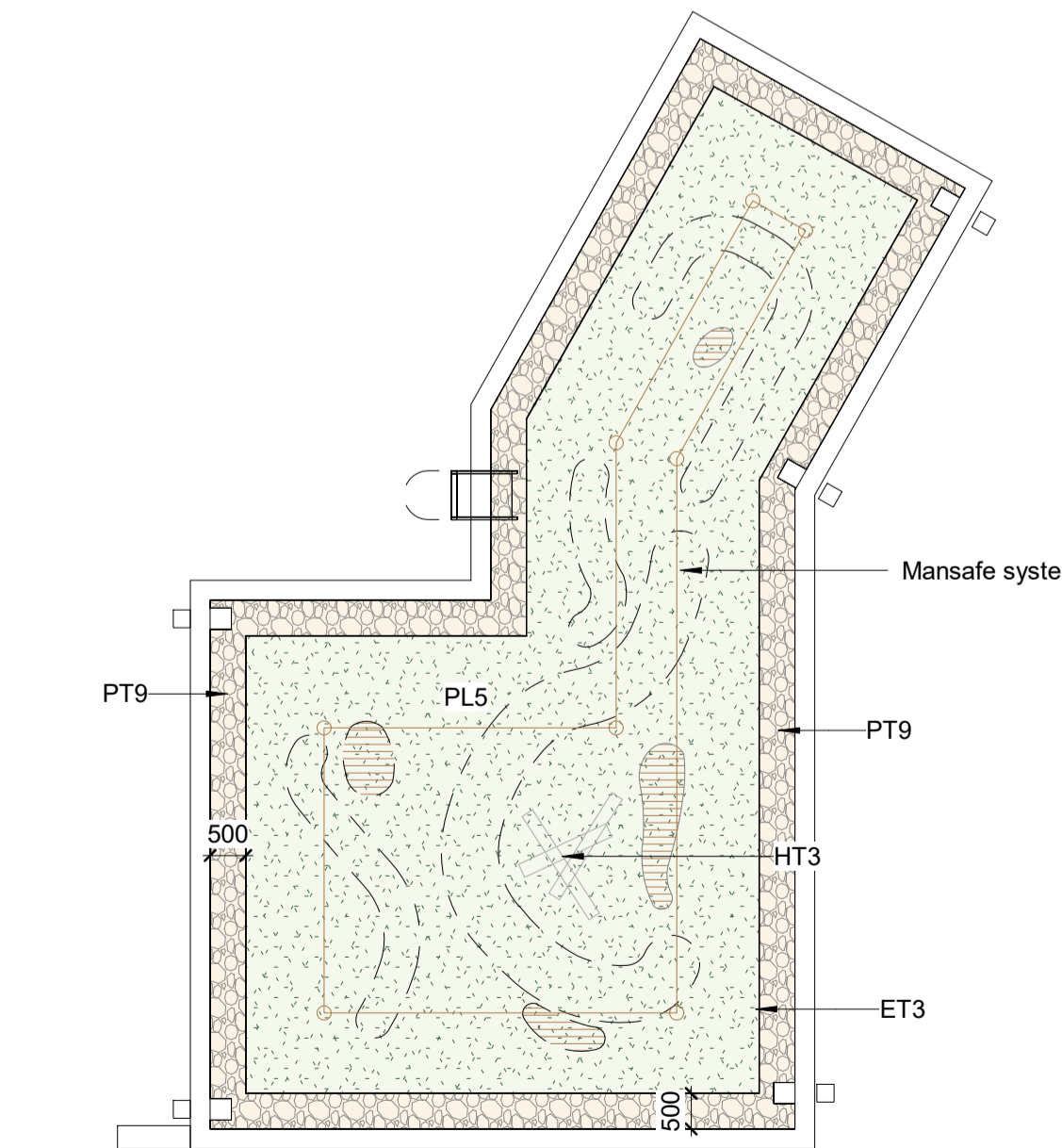
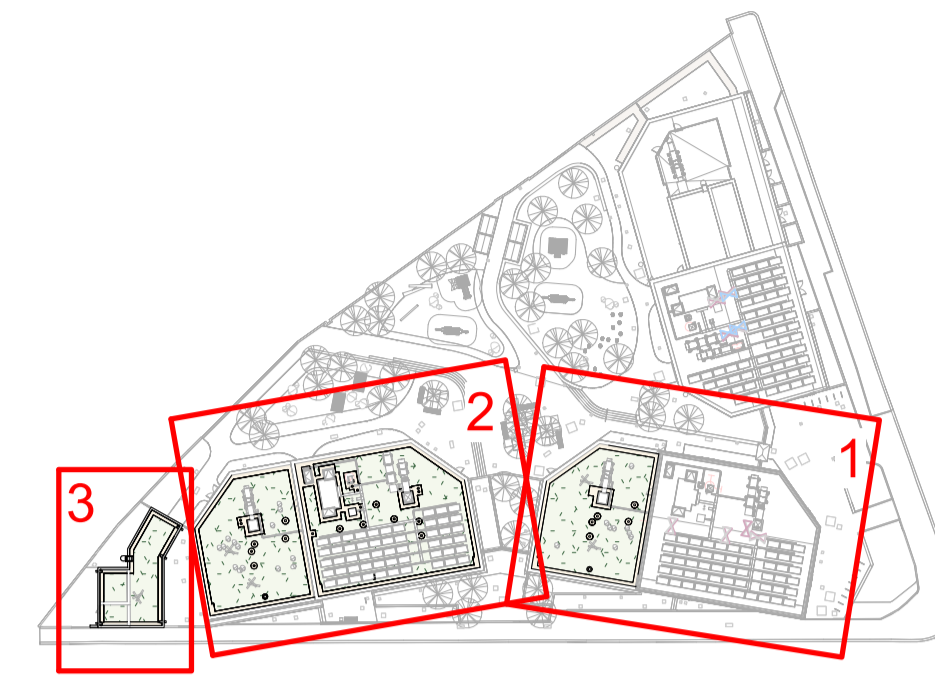


1 Block B
1 : 100



2 Bloc C
1 : 100



3 Cycle Store, Substation and Switchroom
1 : 100

- KEY:**
- PT9 Paving Type 9: Gravel ballast to Architect's design and specification (500-750mm wide fire breaks)
 - ET3 Edge Type 3: Metal edging
 - PL5 Roof planting: Native seed (PL5a) and plug mixes (PL5b)
 - HT1 Scottish pebbles (30-50mm)
 - HT2 Small boulders (150-300mm)
 - HT3 Log piles (100mm-250mm diameter. Reuse the timber from trees felled for construction)
 - Indicative exposed substrate areas to Manufacturer's recommendations
 - 150mm substrate (500-800mm wide, maximum 25% of the total green roof area)
 - Indicative RWO information to MEP Engineer's details and Specification
 - Indicative VP information to MEP Engineer's details and Specification

- NOTES:**
- To be read in conjunction with the drawings ARP3-FAB-ZZ-RF-DE-L-908800 Biodiverse Green Roof Typical Details, ARP3-FAB-XX-XX-SH-L-900010 Appendix 1 - Biodiverse Green Roof Planting Schedule, ARP3-FAB-XX-XX-SH-L-900011 Appendix 2 - Biodiverse Green Roof Maintenance Notes and NBS Specification.
 - The design proposals follows the recommendations set out in the Ecological Assessment Report produced by Stantec.
 - 500mm ballast gravel can be increased to 600-750mm in the areas where it clashes with RWO
 - 150mm gravel edge to all sides of any RWO to inset balconies. Refer to Architect's drawings for details.
 - 300mm gravel edge to all sides of VPs for maintenance. Refer to Architect's drawings for details.
 - Metal edging to be installed at all interfaces between gravel and green roof substrate.
 - All habitat features must be designed to avoid conflicts with VP and RWO. Refer to the MEP Engineer's drawings for VP and RWO details.
 - All habitat features must be accommodated outside the 1m circulation zone from the parapet

- Notes**
- This drawing is the property of fabrik ltd. It must not be copied or reproduced without written consent.
 - Only figured dimensions are to be taken from this drawing. All contractors must visit site and be responsible for taking and checking all dimensions related to the works shown on the drawing.
 - The original of this drawing has coloured lines. Do not rely on the monochrome copy.

No.	Date	Reason	Name
P3	15/08/2023	Stage 4a Updates	XL
P2	14/07/2023	Stage 4a Issue	XL
P1	16/06/2023	Stage 4a Draft Issue	XL



First Floor Studio
The Old School, Exton Street
London
SE1 8UE

T : 0207 620 1453
F : 0207 261 9126
E : london@fabrikuk.com
W : www.fabrikuk.com

Project
ABBEY AREA PHASE 3 for WATES

Drawing
Biodiverse Green Roof General Arrangement Plan

Scale	Date	Approved	Checked	Drawn
As indicated@A1	12/06/23	MB	JC	XL

Project No.	Drawing No.	Revision
D2857, ARP3	ARP3-FAB-ZZ-RF-DR-L-903200	P3

- Preliminary
- Issued for Design/Information
- Issued for Planning Approval
- Issued for Tender
- Issued for Construction
- As Built