

Project Title
81 Belsize Park Gardens

Report Title
Draft School Travel Plan

Document Reference:
5907/001/002B

Prepared For
Dukes Education

Date
August 2023

1 Paris Garden
London
SE1 8ND

T +44 (0)207 939 9916
E london@robertwest.co.uk
W www.robertwest.co.uk



Status	Details of Amendments	Date	Checked	Approved
Draft	-	09/03/23	AMI	AMI
Rev A	Minor amendments	14/08/23	WH	SB
Rev B	Minor amendments	15/08/23	WH	SB

CONTENTS

CHAPTER		PAGE
1.0	BACKGROUND	1
2.0	INTRODUCTION	4
3.0	AIMS AND OBJECTIVES OF TRAVEL PLAN	10
4.0	WORKING GROUP AND STP SUMMARY	11
5.0	TRAVEL AND TRANSPORT INFRASTRUCTURE	12
6.0	SURVEYS, MODAL SHIFT AND TARGETS	12
7.0	CONSULTATIONS	24
8.0	TRAVEL AND TRANSPORT ISSUES	25
9.0	TRAVEL INITIATIVES	26
10.0	SUPPORTING INITIATIVES	29
11.0	SIGN OFF AND FORMAL APPROVAL	32

APPENDICES

APPENDIX A – PROPOSED SITE LAYOUT

APPENDIX B – PTAL REPORT

APPENDIX C – BUS MAPS

1.0 INTRODUCTION AND BACKGROUND

- 1.1 Robert West was appointed by Dukes Education to provide transport planning and highways advice in relation to the proposed expansion of Hampstead Fine Arts Academy (HFAC) into a newly refurbished building at 81 Belsize Park Gardens within the London Borough of Camden (LBC).
- 1.2 HFAC is a college for students aged 13 to 19 years and is part of Dukes Education. The main campus is currently located at 41-43 England's Lane. The secondary campus is located at the ground floor of 81b Belsize Park Gardens, 24 Lambolle Place and Lancaster Stables. There are currently 230 students and 40 full time equivalent (FTE) staff across both sites. It is noted HFAC currently has capacity for 240 students across both sites.
- 1.3 The proposed site is located at 81 Belsize Park Gardens, Camden, NW3 4NJ, located adjacent to the existing secondary campus and is illustrated in Figure 1.1.

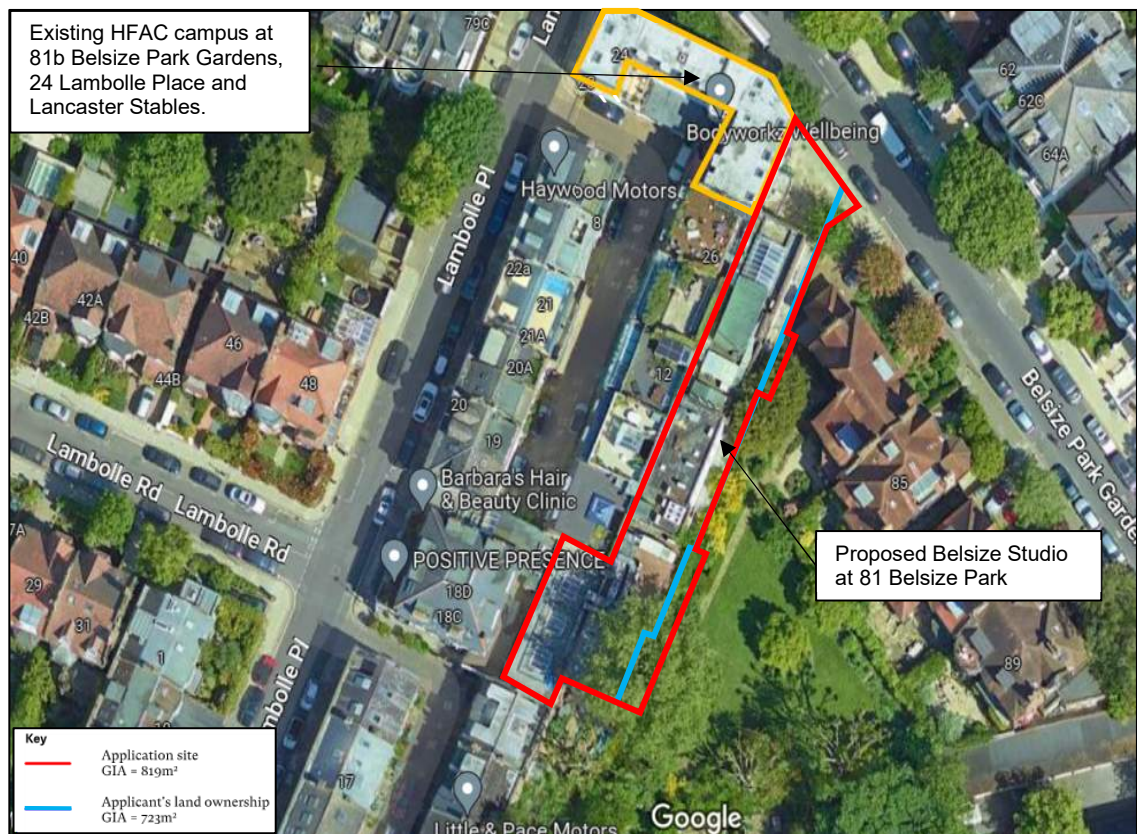


Figure 1.1: Existing and proposed site location

- 1.4 The site is located in a residential area within the Belsize Park Conservation Area. The site is bounded by a residential mews known as Lancaster Stables to the west, residential properties on the east, open green spaces to south and Belsize Park Gardens to the north. The site is located within a controlled parking zone (CPZ) (CA-B Belsize) with parking restricted for permit holders between Monday to Friday, 09:00 to 18:30 and Saturday, 09:30 to 13:30 or pay and display maximum stay four hours.

- 1.5 The site comprises a disused four storey building (1441 sqm) previously occupied by SpringHealth Leisure Club (Class E). The leisure club officially ceased to operate from the site in February 2017 and the site has been vacant since then.

Development proposals

- 1.6 The development proposals comprise refurbishment and change in use of the existing four storey building (1441 sqm) at 81 Belsize Park Gardens (the site) from leisure club (Class E) to education use (Class F1) to be known as Belsize Studio.
- 1.7 Proposals include the relocation and expansion of existing HFAC operations at 81b Belsize Park Gardens, Lambolle Place and Lancaster Stables to the adjacent 81 Belsize Park Gardens. Belsize Studio will provide an on-site café for staff and students only. The college will continue to use the HFAC campus on 41- 43 England's Lane. Pupil numbers at the England's Lane campus will remain broadly at the same capacity as existing. Currently there is capacity for 180 pupils and following the opening of 81 Belsize Park Gardens this building will have capacity for up to 200 pupils. This very modest increase in pupil numbers at the England's Lane campus has not been assessed as part of this assessment.
- 1.8 The proposed Belsize studio will have a capacity for 200 Students and 30 FTE staff by 2025, including 55 students and nine FTE staff to be relocated from 81b Belsize Park Gardens. Development proposals will result in a net increase of 145 Students and 21 FTE staff at the Belsize Studio campus. Students at the proposed Belsize Studio will range from ages 13 to 19 years. Belsize Studio will also accommodate a sixth form centre primarily used by users aged from 16 to 19 years. The students are expected to travel to site independently. The proposed Belsize studio is a car free development. A site plan is attached at Appendix A.
- 1.9 Properties at 81b Belsize Park Gardens, 24 Lambolle Place and Lancaster Stables will cease to be used by HFAC and will be redeveloped for alternative uses as part of separate planning applications.

School Travel Plan context


- 1.10 This draft School Travel Plan (STP) has been prepared in accordance with TfL STARS guidance on Travel Plans, Transport Planning Guidance published by London Borough of Camden (LBC) in January 2021 and pre-application advice letter issued by LBC on 12th April 2018.
- 1.11 Bronze Accreditation through the Transport for London (TfL) STARS system is the aim of the School Travel Plan. The School Travel Plan template has been designed to be consistent with the data entry for the TfL STARS system, allowing review and approval by LBC officers.
- 1.12 It is expected that a full STP will be secured by planning condition. HFAC will input the data into TfL STARS and will take ownership and responsibility for implementation and obtaining Bronze

Accreditation beyond planning determination.

2.0 INTRODUCTION

Site details

2.1 Site details available at this stage are provided in Table 2.1 below. Further details will be confirmed in the full version of this STP.

Type of site	School
URN	100084
Site name	Belsize Studio
Site logo	TBC
DfE Number	202/6387
Travel Plan Coordinator	TBC
Telephone Number	020 7586 0312
Site Email address	mail@hampsteadfinearts.com
Address	81 Belsize Park Gardens, Camden, NW3 4NJ
Location plan	
Twitter handle	TBC
Facebook page	https://www.facebook.com/p/Hampstead-Fine-Arts-College-100071426089421/
Website	https://www.hampsteadfinearts.com
Type of school	Other independent school

Education level	Year 9, GCSE's and A-levels
Head Teacher	Candida Cave
School Travel Policy	TBC

Table 2.1: School details

Introduction to our site

- 2.2 The proposed HFAC Belsize Studio will be located at 81 Belsize Park Gardens, Camden, NW3 4NJ. The Belsize Studio will provide newly refurbished building and associated facilities for 200 students and 30 staff.

Local amenities

- 2.3 There are a number of local amenities available within the vicinity of the proposed site. As part of the BREEAM accreditation process, an assessment was undertaken to assess the proximity of local amenities to the proposed development site. As per the BREEAM criteria, a 500m walking distance to amenities was considered. The amenities within 500m of the site are summarised in Table 2.2.

Criteria	Amenities
Appropriate food outlet	Café for students and staff included on site as part of development proposals. Tesco Express - 200m. England's Lane Belsize Local - 230m. England's Lane
Access to cash	Tesco Express - 200m. England's Lane
Community facility	Not available within a 500m walking distance.
Postal facility	Not available within a 500m walking distance. Closest: Post Office - 580m. Budgens on the A502 Haverstock Hill.
Childcare facility/School	Sarum Hall School – 215m Agincourt Pre-school – 320m St Mary's The Town & Country School – 420m
Leisure/Sports facility	Not available within a 500m walking distance. Closest: Anytime Fitness Chalk Farm – 1100m
Open outdoor space	Primrose Gardens – 315m
Over the counter services associated with a pharmacy	Allchin Pharmacy and Travel Clinic – 275m. England's Lane
Public sector GP surgery or general medical centre	Medicspot Clinic Primrose Hill – 275m. England's Lane Adelaide Medical Centre – 475m. Adelaide Road

Table 2.2: Proximity to amenities

- 2.4 Analysis of the proximity to local amenities to the site indicates that seven out of the nine relevant

amenities are available within a 500m walking distance of the site.

Student information

2.5 This information is provided in Table 2.3 below.

School	Belsize Studio
Age range of students	13-19 years
Number of students	200

Table 2.3: Student information

Staff and volunteer information

2.6 This information is provided in Table 2.4 below.

School	Belsize Studio
Number of full-time employees	30
Number of volunteers	TBC
Volunteers who have been involved in the delivery of the Travel Plan	TBC

Table 2.4: Staff and volunteer information

Opening hours

2.7 The required information is provided in Table 2.5 below.

School site	Opening times	Closing times
Monday	08:00	18:00
Tuesday	08:00	18:00
Wednesday	08:00	18:00
Thursday	08:00	18:00
Friday	08:00	18:00
Saturday	TBC	TBC
Sunday	TBC	TBC
Students school day (classes start/ finish)	09:00	16:00
Breakfast clubs (if applicable)	TBC	TBC
After school clubs (if applicable)	TBC	TBC
Other timings e.g. Adult evening class timings	18:00	19:30

Table 2.5: Site information

2.8 It is noted during some weekdays, evening classes will take place. On these days the site will close at 19:30.

Site planning details

2.9 The site plan is contained in Appendix A.

2.10 The proposed Belsize Studio will have capacity for 200 students and 30 staff. 55 students and nine FTE staff will relocate from the existing site at 81b Belsize Park Gardens, Lambolle Place and Lancaster Stables buildings.

2.11 Other site details:

- i. This STP will be submitted as part of the planning application for the proposed Belsize Studio. The proposed development will accommodate 200 students and 30 staff.

Additional information

2.12 The relevant details are provided in Table 2.6 below.

School	Belsize Studio
Sustrans Officer Working at School	TBC
Living Streets WOW Officer Working at School	TBC
Local Authority Officer Working with Site	TBC
Other information	TBC

Table 2.6: Additional information

3.0 AIMS AND OBJECTIVES OF TRAVEL PLAN

3.1 The aim of this STP is as follows:

The aim of this School Travel Plan is to obtain Bronze Accreditation in the opening year and maintain this going forward. This will help address any transport impacts associated with the proposed HFAC Belsize Studio.

3.2 The objectives of this STP are as follows:

- i. To minimise the impact on the local community of trips associated with students, staff and visitors by minimising noise, pollution and congestion.
- ii. To show a commitment to improving traffic conditions within the local area associated with the proposed relocation.
- iii. To reduce the adverse effects on health associated with increased vehicle use.
- iv. To reduce air pollution and the consumption of fossil fuels.
- v. To increase the attractiveness, and hence the proportion of journeys made to and from the site by sustainable modes, of transport such as cycling.
- vi. To reduce the cost to staff on their journey to the proposed Belsize Studio by promoting alternatives that are both cheaper and more environmentally friendly.
- vii. To demonstrate commitment to promoting sustainable transport choices and reducing or eliminating the traffic impact of the development on the local community.

4.0 WORKING GROUP AND STP SUMMARY

Working group

4.1 The details of the working group are provided in Table 4.1 below.

Name	Role
Candida Cave	Head Teacher
TBC	Travel Plan Coordinator
TBC	Deputy Head Teacher
TBC	Teacher
TBC	Parent
TBC	Governor

Table 4.1: Additional information

Working group actions

4.2 The following actions will be undertaken by the working group during the summer term of the school opening year:

- i. Upload details of the STP to the TfL STARS database.

5.0 TRAVEL AND TRANSPORT INFRASTRUCTURE

5.1 This section describes the existing site, former use and surrounding site context, including accessibility by all non-car modes of transport.

The site and surrounding area

5.2 The site is located at 81 Belsize Park Gardens, Camden, NW3 4NJ approximately 175m northwest of the main HFAC campus at 41-43 England's Lane. The site currently comprises a building previously occupied by SpringHealth Leisure Club (Class E) which ceased operations in February 2017. The building has since been vacant.

5.3 The site is located in a residential area with good public transport accessibility. The site is bounded by a residential mews known as Lancaster Stables to the west, residential properties on the east, open green spaces to south and Belsize Park Gardens to the north. The site is located within a CPZ (CA-B Belsize) with parking restricted for permit holders between Monday to Friday 09:00 to 18:30 and Saturday, 09:30 to 13:30. Belsize Park Gardens and surrounding streets are part of a designated traffic calmed area within Camden.

5.4 There are a number of schools in the area and Table 5.1 below shows the schools with the distances from proposed site.

School	Distance(m)
Hampstead Fine Arts College	175
Sarum Hall School	192
Agincourt Pre-School	300
Oliver's Montessori Nursery and Pre-school	380
Hereward House School	411
The Hall School (senior school)	481
Trevor Roberts School	488
The Hall School (middle School)	521
The Hall School	590

Table 5.1: Local schools

Existing access arrangements

5.5 There is currently no formal vehicular access to the site. Pedestrians access the site from forecourt area of site via the southern footway on the Belsize Park Gardens. There is no boundary wall/ gate along the northern boundary of the site. Figure 5.1 below shows existing access

arrangement for the site.



Figure 5.1 Existing access and forecourt

Accessibility by non-car modes

Pedestrians

- 5.6 The pedestrian network within the vicinity of the site is comprehensive and includes a footway network with street lighting at regular intervals. All key routes to the site including Belsize Park Gardens, Lambolle Place, England's Lane, Belsize Grove, A502 Haverstock Hill and Eton Avenue are subject to 20mph speed limit.
- 5.7 There are a number of pedestrian crossing facilities within the vicinity of the site. These include but are not limited to:
- i. A zebra crossing with dropped kerbs and tactile paving on Belsize Park Gardens immediately north of the junction with Eton Avenue.
 - ii. A zebra crossing with dropped kerbs and tactile paving on England's Lane immediately east of the junction with Belsize Park Gardens.

- iii. A raised table crossing with tactile paving and a carriageway build out at Belsize Grove at junction with Belsize Park Gardens.
- iv. A raised table crossing with tactile paving on Eton Avenue at the junction with Belsize Park Gardens.
- v. A raised table crossing with tactile paving on Belsize Grove at junction with A502 Haverstock Hill.
- vi. A zebra crossing with dropped kerbs and tactile paving on A502 Haverstock Hill immediately south of the junction with Belsize Grove.
- vii. A signalised pedestrian crossing with dropped kerb and tactile paving is provided outside Belsize Park London Underground station.
- viii. A pedestrian crossing with dropped kerbs, tactile paving and a pedestrian refuge island on Eton Avenue, immediately west of junction with Lambolle Place.
- ix. A signalised pedestrian crossings at all arms of the junction with England's Lane and Haverstock Hill.

Cyclists

- 5.8 Cycle routes are located on A502 Haverstock Hill, Eton Avenue and England's Lane/ Primrose Hill Road. These routes provide connections to a network of designated and advisory cycle routes including, National Cycle Route 4 that provides access to various local centres in London and beyond. Figure 3.2 illustrates cycle routes within the vicinity of the site.
- 5.9 A502 Haverstock Hill is part of proposed Cycle Superhighway 6 (CS6) and has dedicated cycle lanes with flexible bollards on both sides of the carriageway. It joins existing CS6 on Prince of Wales Road to the east of the site. Eton Avenue is part of London cycle network of quieter and traffic free routes. England's Lane/ Primrose Hill Road is designated as a cycle friendly road.
- 5.10 Public cycle parking is provided on England's Lane, outside Belsize Park London Underground station, outside Hampstead Heath Overground station and outside Swiss Cottage London Underground station.

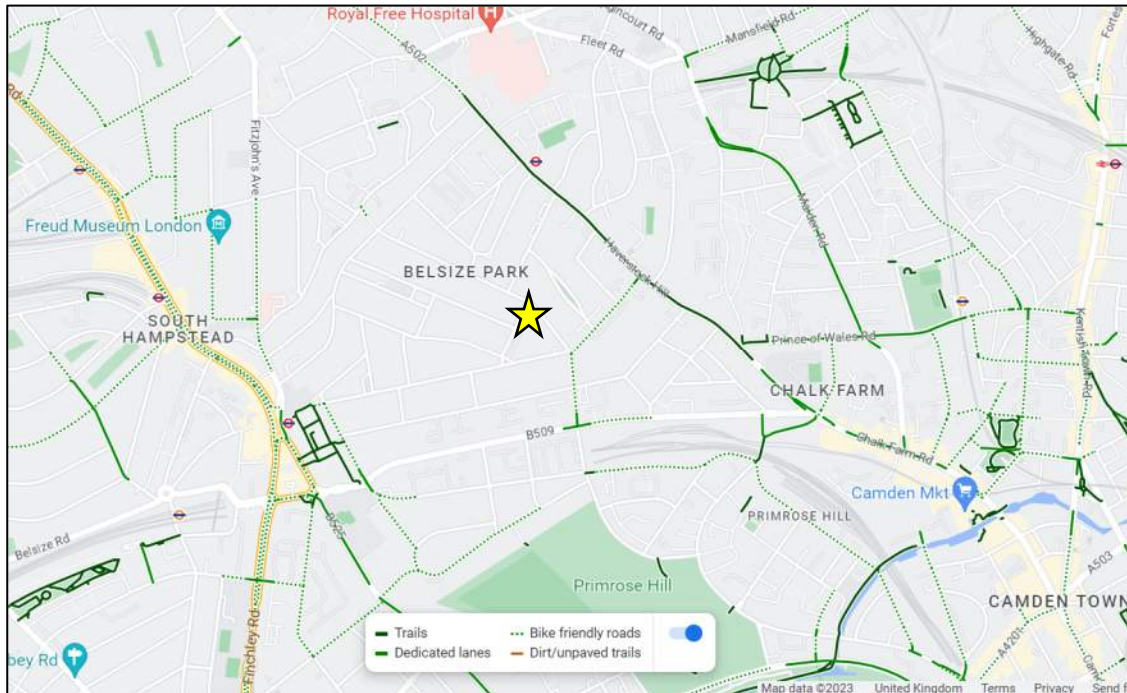


Figure 5.2: Cycle routes (source: google maps)

Public Transport

Public Transport Accessibility Level (PTAL)

5.11 A PTAL assessment of the site was undertaken using the TfL online database (www.tfl.gov.uk/webcat). The PTAL value is classified in bands ranging from 1a to 6b where 1a is the lowest level of accessibility (very poor) and 6b is the highest level of accessibility (excellent). A full PTAL report is included in Appendix B.

5.12 The output demonstrates that the site is located in an area with a PTAL of 3 ('moderate' accessibility by public transport).

Buses

5.13 The nearest bus stops to the site are located on England's Lane approximately 270m (three-minute walk) to the southeast of the site. The bus stop providing southbound services provides a shelter, flag with timetable information, seating and a refuse bin. The bus stop providing northbound services has a flag with timetable information present.

5.14 Further bus stops within the vicinity of the site are located on Primrose Hill approximately 320m (four-minute walk) to the south of the site, A502 Haverstock Hill approximately 450m (six-minute walk) to the northeast of the site, Belsize Avenue approximately 570m (seven-minute walk) to the northwest of the site.

5.15 Table 5.2 shows the frequency and destinations of the bus routes available within a 640m walking

radius of the site. The frequency of the buses is based the typical morning and afternoon school peak hours of 08:00 – 09:00 and 15:00 – 16:00). Appendix C includes bus maps.

Bus Route	Destination	Hourly frequency	
		AM	PM
31	Towards White City Bus Station	5-7	5-7
	Towards Swiss Cottage	5-7	5-7
168	Towards Dunton Road	6-10	6-10
	Towards Old Kent Road	5-7	5-7
268	Towards Hampstead	4	4-5
	Towards Swiss Cottage	4	4-5
C11	Towards Brent Cross	4-7	4-7
	Towards Gospel Oak	4-7	4-7

Table 5.2: Summary of bus services

Rail

- 5.16 The closest London Underground station to the site is Belsize Park station approximately 550m (seven-minute walk) to the north of the site. Belsize Park station is on the Edgware branch of Northern Line and is within London Travel Fare zone 2. Services are provided towards Edgware, Kennington and Morden, via bank.
- 5.17 Swiss Cottage London Underground Station is located approximately 850m (11-minute walk) southwest of the site. Swiss Cottage station is on the Jubilee line and is within London Travel Fare zone 2. Services are provided towards Stratford and Stanmore.
- 5.18 Hampstead Heath London Overground Station is located approximately 1.3km (16-minute walk) north of the site. Hampstead Heath London Overground Station is on the North London Line and is within London Travel Fare zone 2. Services are provided towards Richmond, Clapham Junction and Stratford.
- 5.19 Kentish Town national rail station is located 1.7km to the northeast of the site. Services are provided towards St Albans and Sutton.

Access for users with disabilities/visual impairment and/or age-related requirements

- 5.20 Dropped kerbs with tactile paving or raised table crossings with tactile paving are provided on the footway network and routes leading to the site. Footways were observed to be level and of good

quality suitable for pedestrians for all pedestrians.

Local highway network

A description of the key highway links in the vicinity of the site is presented in the following paragraphs.

Belsize Park Gardens

- 5.21 Belsize Park Gardens is a single carriageway road that connects Belsize Avenue/ Belsize Park to the west of the site and England's Lane/ Primrose Hill Road to the east of the site. There are several residential roads that connect from Belsize Park Gardens. Belsize Park Gardens provides pedestrian and vehicular access to the site, although it is noted no formal vehicular access is provided. Belsize Park Gardens is part of a designated traffic calmed area within Camden.



Figure 5.3: Belsize Park Gardens

- 5.22 Belsize Park Gardens is subject to a 20mph speed limit with parking restricted on both sides for permit holders only from Monday to Friday between 09:00 to 18:30, Saturday 09:30 to 13:30 or pay and display maximum stay four hours. Car club parking is provided along Belsize Park Gardens. Parking is restricted via white advisory lines in front of driveways, double yellow lines at corners of junctions and 'zig-zag' lines in the immediate vicinity zebra crossings.

- 5.23 On street parking on both sides of Belsize Park Gardens reduces the effective width of Belsize Park Gardens to approximately five metres which limits vehicle speeds. The alignment of Belsize Park Gardens is mostly straight with slight curvature to the north of the site.
- 5.24 Vehicle size restrictions prohibit buses and HGVs larger than five tonne parking overnight on Belsize Park Gardens between 18:30 to 08:00.
- 5.25 A review of traffic conditions along Belsize Park Gardens using the Google Maps traffic tool indicates that road users experience minor delays and congestion during morning and afternoon peak hours possibly due to proximity of number of schools in the area.

Lambolle Place

- 5.26 Lambolle Place is a single carriageway road which connects Belsize Park Gardens to the west of the site to Lancaster Grove to the south of the site. Lambolle Place is part of designated traffic calmed area within Camden.
- 5.27 The road is subject to a 20mph speed limit with parking restricted on both sides for permit holders only from Monday to Friday between 09:00 to 18:30, Saturday between 09:30 to 13:30 or pay and display maximum stay four hours. Parking is restricted by means of white lines in front of driveways and double yellow lines at corners of junctions.
- 5.28 On street parking on both sides of Lambolle Place reduces the effective width to single lane which limits vehicle speeds.
- 5.29 Vehicle size restrictions prohibit buses and HGVs larger than five tonne parking overnight on Lambolle Place between 18:30 to 08:00.

England's Lane/ Primrose Hill Road

- 5.30 England's Lane is a single carriageway road that connects A502 Haverstock Hill to the northeast that continues as Primrose Hill to the southeast of the site, connecting to B609 Adelaide Road.
- 5.31 The road is subject to a 20mph speed limit with parking restricted on both sides for permit holders only from Monday to Friday 09:00 to 18:30, Saturday 09:30 to 13:30 or pay and display maximum stay four hours. Parking is restricted by means of white lines in front of driveways, double yellow lines at corners and 'zig-zag' lines in the immediate vicinity zebra crossings.
- 5.32 On street parking on both sides of England's Lane/ Primrose Hill Road reduces the effective width of England's Lane/ Primrose Hill Road to approximately four and a half metres which limits vehicle speeds. The alignment of Belsize Park Gardens is mostly straight with slight curvature at the junction with Belsize Park Gardens

- 5.33 A review of traffic conditions along England's Lane/Primrose Hill Road using the Google Maps traffic tool indicates that road users experience minor delays and congestion during morning and evening peak hours possibly due to proximity of number of schools in the area.

Belsize Grove

- 5.34 Belsize Grove is a single carriageway road which connects A502 Haverstock Hill to the north of the site to Belsize Park Gardens to the west of the site. Belsize Grove is part of a designated traffic calmed area within Camden.
- 5.35 The road is subject to a 20mph speed limit with parking restricted on both sides for permit holders only from Monday to Friday between 09:00 to 18:30, Saturday between 09:30 to 13:30 or pay and display maximum stay four hours. Parking is restricted by means of white lines in front of driveways and double yellow lines at corners of junctions. Car club parking is provided along Belsize Grove.
- 5.36 Vehicle size restrictions prohibit buses and HGVs larger than five tonnes parking overnight on Belsize Grove between 18:30 to 08:00.
- 5.37 On street parking on both sides of Belsize Grove reduces the effective width of Belsize Grove to approximately five metres which limits vehicle speeds. The alignment of Belsize Grove is mostly straight with good forward visibility along the road.
- 5.38 A review of traffic conditions along Belsize Grove using the Google Maps traffic tool indicates that road users experience minor delays and congestion during morning and evening peak hours possibly due to proximity of number of schools in the area.

A502 Haverstock Hill

- 5.39 A502 Haverstock is a single carriageway road which provides a connection Hampstead to the northwest of the site and Camden Town to the southeast of the site. A502 Haverstock Hill is part of CS6 with dedicated cycle lanes provided on both sides of the carriageway.
- 5.40 The road is subject to a 20mph speed limit with parking restricted on both sides with implementation of double yellow lines. There are designated loading and disabled bays on both sides of the carriageway at intervals of the road. Parking is restricted by 'zig-zag' lines in the immediate vicinity of signalised pedestrian crossings and zebra crossings.
- 5.41 The alignment of A502 Haverstock Hill is mostly straight with good forward visibility along the road.
- 5.42 Review of traffic conditions along A502 Haverstock Hill using google maps traffic indicate that

road users experience minor delays and congestion during morning and evening peak hours possibly due to proximity of number of schools in the area.

Eton Avenue

- 5.43 Eton Avenue is a single carriageway road which connects Belsize Park Gardens from the southeast of the site to Adamson Road to the west of the site. Eton Road provides access to other residential roads within the area. A pedestrian and cycle link from Eton Avenue is provided to Swiss Cottage London Underground Station and the A41. Eton Avenue is part of designated traffic calmed area within Camden.
- 5.44 The road is subject to a 20mph speed limit with parking restricted on both sides for permit holders only from Monday to Friday between 09:00 to 18:30, Saturday between 09:30 to 13:30 or pay and display maximum stay four hours. Parking is restricted by means of white lines in front of driveways and double yellow lines at corners of junctions.
- 5.45 Vehicle size restrictions prohibit buses and HGVs larger than five tonne parking overnight on Eton Avenue between 18:30 to 08:00.
- 5.46 On street parking on both sides of Eton Avenue reduces the effective width of the carriageway to approximately five metres which limits vehicle speeds. The alignment of Eton Avenue is mostly straight with good forward visibility along the road.
- 5.47 A review of traffic conditions along Eton Avenue using the Google Maps traffic tool indicates that road users experience minor delays and congestion during morning and evening peak hours possibly due to proximity of number of schools in the area.

6.0 SURVEYS, MODAL SHIFT AND TARGETS

6.1 This chapter provides existing student and staff travel mode share data obtained by recent surveys. Additionally indicative STP targets are provided for staff and students.

Student travel mode share

6.2 A student travel survey of existing HFAC students was undertaken on Friday 26th May 2023. The results are presented in Table 6.1.

Travel mode	Mode share	
	To HFAC	From HFAC
Car passenger	10.77%	3.03%
National Rail	4.62%	6.06%
Tube	61.54%	62.12%
Public Bus	12.31%	15.15%
Cycle	3.08%	1.52%
Scooter	0.00%	0.00%
Walking	7.69%	10.61%
Uber/Taxi	0.00%	1.52%
Total	100%	

Table 6.1: Student travel mode share

Staff mode share

6.3 A staff travel survey of existing HFAC staff was undertaken on Friday 26th May 2023. The results are presented in Table 6.2.

Travel mode	Mode share
	To/ from HFAC
Car (driving)	0.00%
Car (passenger)	0.00%
Taxi	0.00%
National rail	13.64%
Cycle	9.09%
Walking	13.64%
Public bus	0.00%
Motorcycle	9.09%
Scooter	0.00%
Tube	54.55%
Total	100.0%

Table 6.2: Staff travel mode share data

Targets

6.4 STP targets are outlined in Table 6.3. for students and staff.

Student or Staff	Target type	Due date	% Change	Description
Students	Road safety	2025	+100%	The school will target providing all students with road safety training.
Students	Cycle awareness	2025	+100%	Students and parents will be made aware of benefits of cycling to school through leaflets, school website and seminars. Information on local cycling routes and facilities will be shared to promote cycling.
Students	Car drop-off	2025	-1%	The school will encourage students to use sustainable transport modes rather than private car.
Students	Active travel	2025	+3%	The school will encourage use of active travel such as walking and cycling to students to reduce pressure on congested public transport services during peak hours
Staff	Active travel	2025	+2%	The school will encourage use of active travel such as walking and cycling to by staff to reduce pressure on congested public transport services during peak hours

Table 6.3: STP targets

7.0 CONSULTATIONS

7.1 Table 7.1 below provides details of planned consultations that have or will be undertaken for this STP.

Status	Type	Consultation	Person (s) Responsible	Target Date	Completion Date
Planned	Student	In depth student surveys take place	TBC	TBC	TBC
Planned	Staff	In depth staff surveys take place	TBC	TBC	TBC
Planned	Parents	In depth parent surveys take place	TBC	TBC	TBC
Planned	Staff	The School Travel Plan/ STARS is discussed at staff meetings	TBC	TBC	TBC
Planned	Senior Management and Governors	The School Travel Plan/ STARS is discussed at senior management/ Governor meetings	TBC	TBC	TBC
Planned	Local Authority	The school becomes engaged with the Local Authority in relation to implementing and gaining approval for the STP	TBC	TBC	TBC

Table 7.1: Consultation – planned

8.0 TRAVEL AND TRANSPORT ISSUES

8.1 The current travel and transport issues at the proposed site are outlined in Table 8.1. Some of the proposed solutions have already been identified through the process of addressing the impact of the planning application for the proposed Belsize Studio.

Status	Date of issue	Details of issue	Possible solutions
Current	March 2023	Lack of parking in the vicinity of the proposed school	No car use policy by staff
Current	March 2023	Students crossing Belsize Park and England's Lane undesignated crossing points.	TfL STARS road safety obstacle course
Current	March 2023	Local traffic and topography/steep gradients discouraging cycling to site.	Cycling awareness training
Current	March 2023	Lack of cycling parking within vicinity of the proposed site.	Provide cycle parking for students, staff and visitors.
Current	March 2023	Lack of opportunities to undertake cycle training	Provide bike training courses for students
Current	March 2023	Busy public transport services in the peak hours	Encourage active travel by students and staff

Table 8.1: Travel and transport issues

9.0 TRAVEL INITIATIVES

9.1 Table 9.1 includes suggested travel initiatives that should be implemented by the school to mitigate the transport impacts associated with the proposed development. Initiatives will also be included to encourage sustainable and active travel modes of travel amongst staff and pupils.

No.	Status	Type	Action	Reporting	Responsible	Target date	Completion date
1	Planned	Car parking	Car free development. Introduction of no car use policy for staff	School will introduce a policy that will prevent staff from driving to school except for disabled staff	TPC	TBC	TBC
2	Planned	Walking/cycling	Introduce TfL STARS Secondary Challenge to train students to lead their peers and influence parents in tackling travel issues in school	Uptake of training will be monitored by TPC	TPC	TBC	TBC
3	Planned	Cycling	Organise cycle training sessions for students	Uptake of cycle training to be monitored by TPC	TPC	TBC	TBC
4	Planned	Cycling	Introduction of 30 covered long stay and two short stay cycle parking for staff, students and visitors	Staff cycle parking will be monitored by the TPC	As part of the development	TBC	TBC
5	Planned	Cycling	Installation of showers/changing rooms/lockers	Use of facilities will be monitored by the TPC	As part of the development	TBC	TBC
6	Planned	Cycling	Bike Maintenance sessions	Uptake of training will be monitored by TPC	TPC	TBC	TBC

7	Planned	Cycling	Give out cycling maps	Number of maps distributed to be monitored by TPC	TPC	TBC	TBC
8	Planned	Cycle club	Set up a cycle club for staff and students to register and cycle with peers	Uptake of cycle club will be monitored by TPC	TPC	TBC	TBC
9	Planned	Cycling competition/challenge	Organise annual/ half yearly cycling completion for students	Participation levels for cycling competition will be monitored by TPC	TPC	TBC	TBC
10	Planned	Public Transport	Promote responsible behaviour on public transport	Any complaints by public to be monitored by TPC	TPC	TBC	TBC
11	Planned	Public Transport	Use of public transport for school trips	School will introduce policy that prioritise use of public transport for school trip	TPC	TBC	TBC
12	Planned	Public Transport	Safety & Citizenship talk	Uptake of lessons to be monitored by TPC	TPC	TBC	TBC
13	Planned	Public Transport	Personal safety lessons	Uptake of safety lessons to be monitored by TPC	TPC	TBC	TBC
14	Planned	Active Travel	Encourage student and staff to use active modes of travel such as walking and cycling	Uptake of active travel will be monitored by TPC	TPC	TBC	TBC

15	Planned	TfL STARS road safety obstacle course	Organise TfL STARS road safety obstacle course for students to improve road safety awareness among students	N/A	School staff	TBC	TBC
16	Planned	Cycling	Government Cycle to work scheme for staff.	Uptake of the cycle to work scheme monitored by the TPC	TPC	TBC	TBC
17	Planned	Promotion	Up to date information regarding local public transport available to staff/ parents e.g. on school website	Information kept up to date on the school website	TPC	TBC	TBC
18	Planned	Cycling	Cycling awareness programme for students and staff	Students, parents and staff will be made aware of local cycling routes and facilities.	TPC	TBC	TBC
19	Planned	Bike Week	Student and staff will be encouraged to cycle to school	Student and staff travel will be monitored by the TPC	TPC	TBC	TBC
20	Planned	Walk to school week	Student and staff will be encouraged to walk to school	Student and staff travel will be monitored by the TPC	TPC	TBC	TBC
20	Planned	Attendance of TfL/Camden school travel workshop	School representative to attend the workshop event	TPC to maintain record of attendance	TPC	TBC	TBC

Table 9.1: Travel initiatives

10.0 SUPPORTING INITIATIVES

10.1 Table 10.1 includes suggested supporting initiatives that should be implemented by the school to mitigate the transport impacts associated with the proposed development. Initiatives will also be included to encourage sustainable and active travel modes of travel amongst staff and pupils.

No.	Status	Type	Action	Reporting	Responsible	Target date	Completion date
1	Planned	Promotion	Social media campaigns to promote safe and sustainable travel.	The school will regularly promote aspects of the STP posting useful information for all school users on social media and the school website	TPC	TBC	TBC
3	Planned	Promotion	Parents and induction evening will be used to handout information to promote active travel and public transport	The school will promote aspects of the STP at the events	TPC/ School staff	TBC	TBC
3	Planned	Promotion	Letter from Head Teacher to parents	Letters will be posted to parents at the start of the year	TPC/ School staff	TBC	TBC
4	Planned	Promotion	The STP will easily be made available to all staff, students and parents	Awareness should be made to all school users of the STP existence, and the targets and measures set. A link to the STP will be made available from the school website	TPC	TBC	TBC

5	Planned	Promotion	Notice boards will be provided with useful local information on active travel and public transport	School staff will regularly update latest information on notice boards	TPC/ School staff	TBC	TBC
6	Planned	Promotion	Invite local dignitaries to special events	Involvement of local dignitaries will raise awareness among students, staff and local community.	TPC	TBC	TBC
7	Planned	Promotion	Work with charities who promote access to cycling for students	Students will get opportunities to use bikes and gain confidence to use them now and, in the future.	TBC	TBC	TBC
8	Planned	Promotion	Organise quarterly parents' coffee morning to promote active travel and public transport	The school will promote aspects of the STP at the events	TBC	TBC	TBC

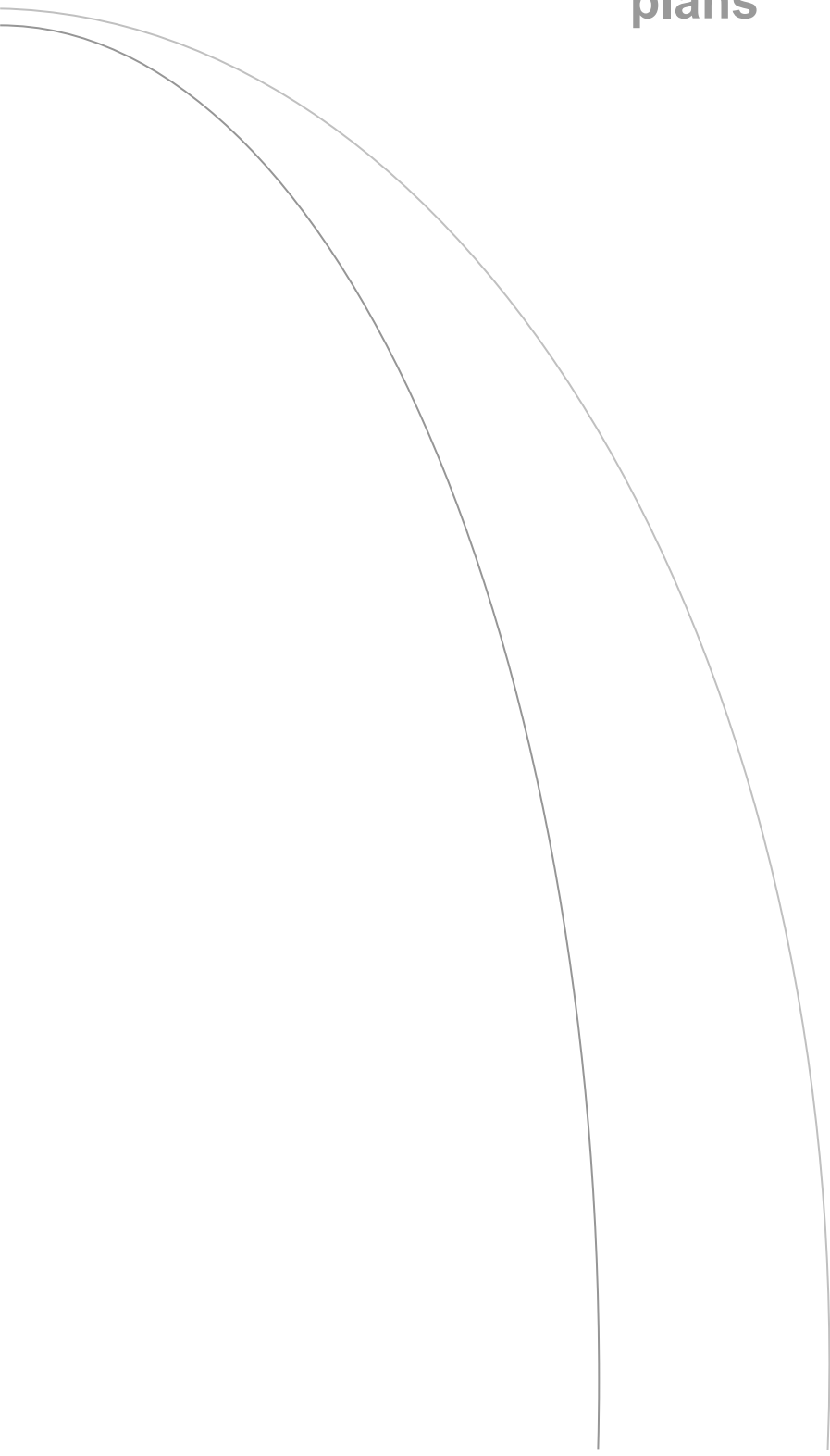
8	Planned	Promotion	Give out public transport maps	The school will promote aspects of the STP at the events	TBC	TBC	TBC
---	---------	-----------	--------------------------------	--	-----	-----	-----

Table 10.1: Supporting initiatives

11.0 SIGN OFF AND FORMAL APPROVAL

- 11.1 Confirmation of the measures and initiatives that will be implemented at Belsize Studio to encourage sustainable travel will be confirmed in the full STP.
- 11.2 Following determination of the planning application the contents of this document will be uploaded to the TfL STARS online database to progress with approval of the STP and aim towards achieving Bronze Accreditation.

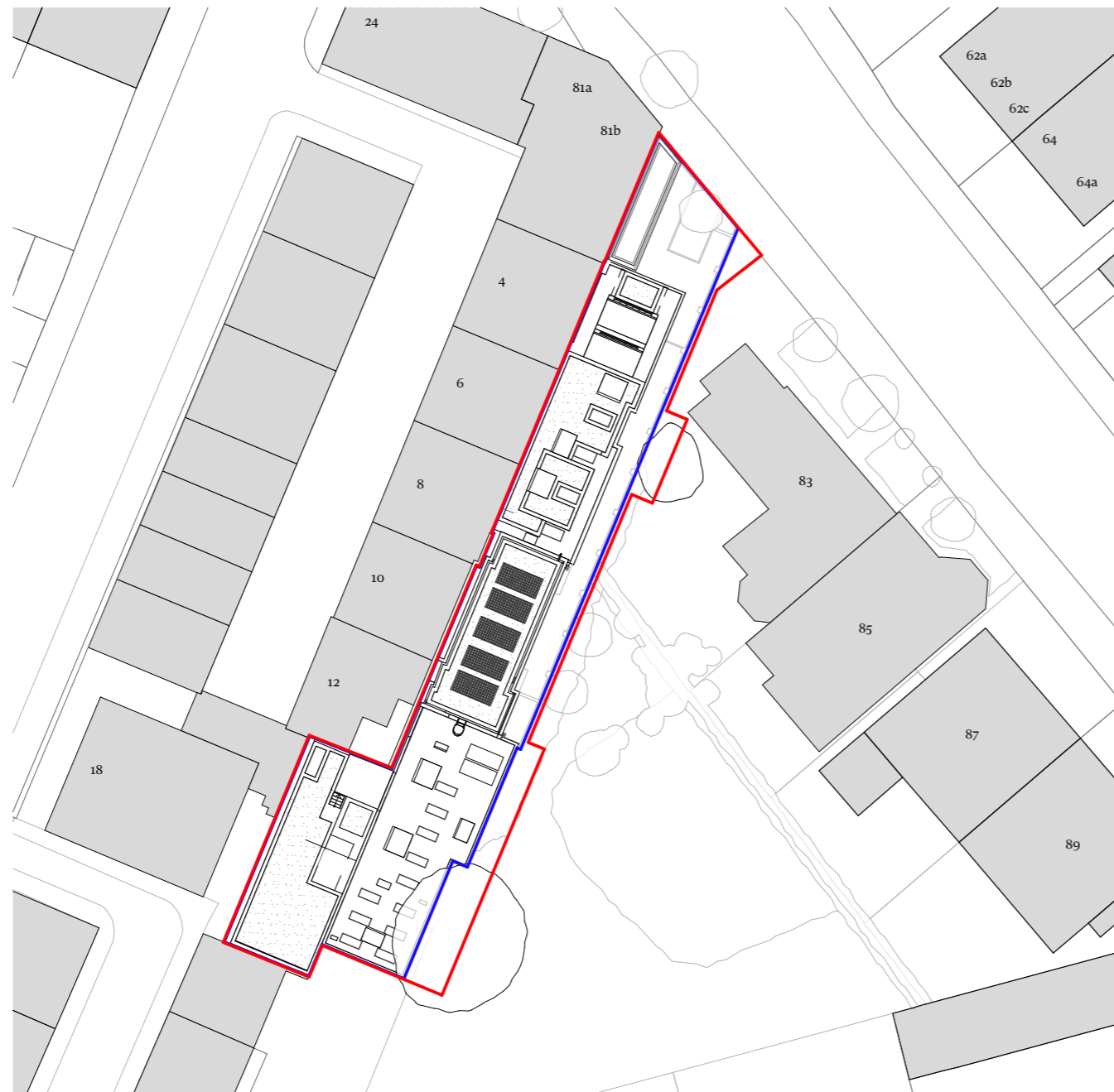
Appendix A – Proposed site plans



Notes:

- Key**
- Application site
GIA = 819m²
 - Applicant's land ownership
GIA = 723m²

Proposed building Total GIA = 1311m²



Mapping contents © Crown copyright and database rights 2023 Ordnance Survey 100035207

A Proposed Site Plan
(GA) 001 Scale 1:500



Rev	Date	Issue	Drawn	Check
-	09/08/2023	Issued to Consultants for Coordination	SC	RD

CDC Studio

Studio, 17 Comberton Rd, Cambridge CB23 7BA
5-7 Tanner St, London, SE1 3LE
info@cdcstudio.co.uk T. 01223 262413

Project :
81 Belsize Park Gardens

Client :
Fine Arts College Ltd

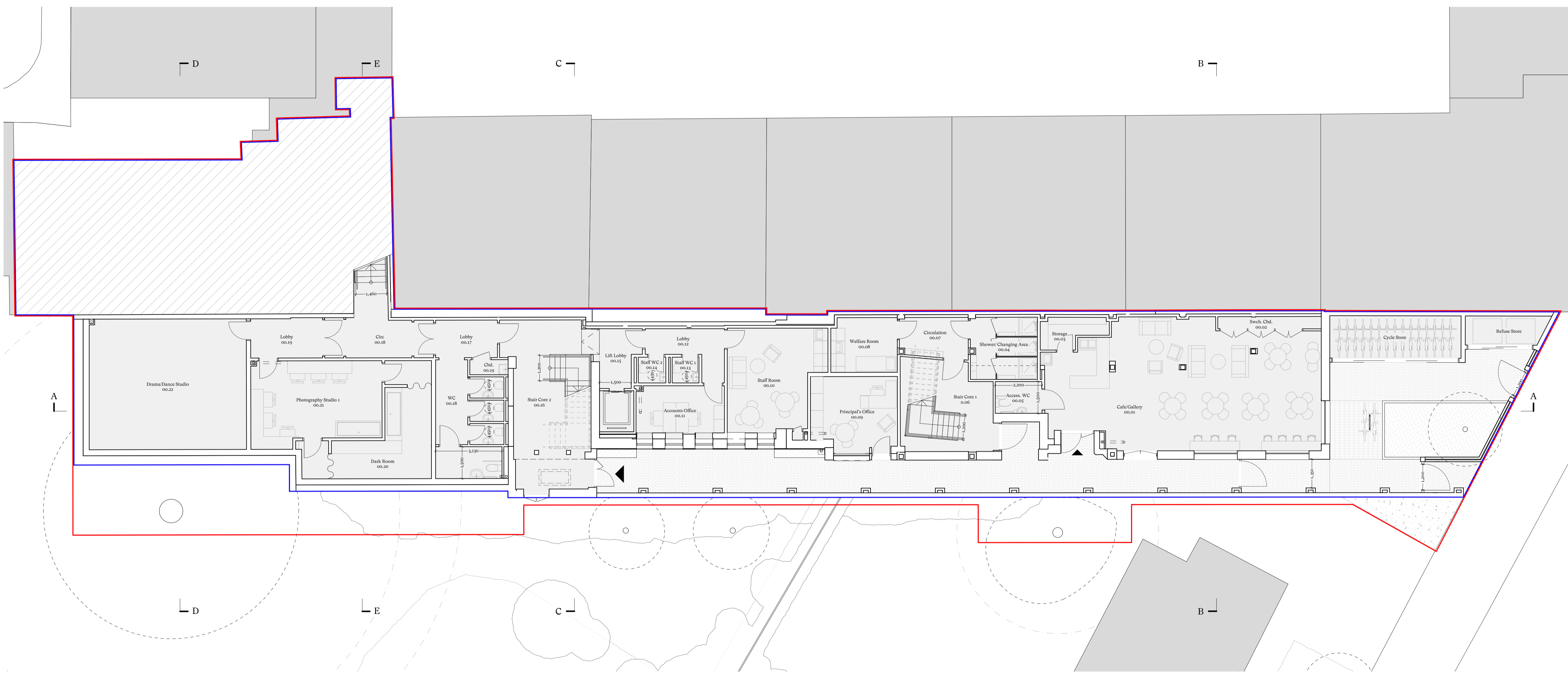
Address :
81 Belsize Park Gardens, Belsize Park,
London NW3 4NJ

Date : 04/08/2023
Scale @ A3 : 1:500

Drawing Title :
Proposed Site Plan

Drawing No. : 4279 CDC XX RL DR A (GA) 001
Rev. : -

Key
 Application site
 GIA = 829m²
 Applicant's land ownership
 GIA = 723m²
 Proposed building Total GIA = 1311m²



B Ground Floor Plan
 Scale 1:100

H	09/08/2023	Issued for Contributions for Coordination	SC	RD
G	31/07/2023	Stage 1 Cost Issue	SC	RD
F	17/07/2023	Design Freeze for Coordination	CW	SC
E	11/07/2023	Issued for Client for comment	SC	RD
D	19/06/2023	Issued for Contributions for Coordination	SC	RD
C	02/06/2023	Stage 1 Issue for cost coordination	CW	SC
Rev	Date	Issue	Drawn	Check

CDC Studio

Studio, 17 Comberton Rd, Cambridge CB23 7BA
 5-7 Tanner St, London, SE1 3LE
 info@cdcstudio.co.uk T: 01223 262413

Project:
 81 Belsize Park Gardens

Client:
 Fine Arts College Ltd

Address:
 81 Belsize Park Gardens, Belsize Park,
 London NW3 4NJ

Date: 24/02/2023
Scale @ A1: 1:100

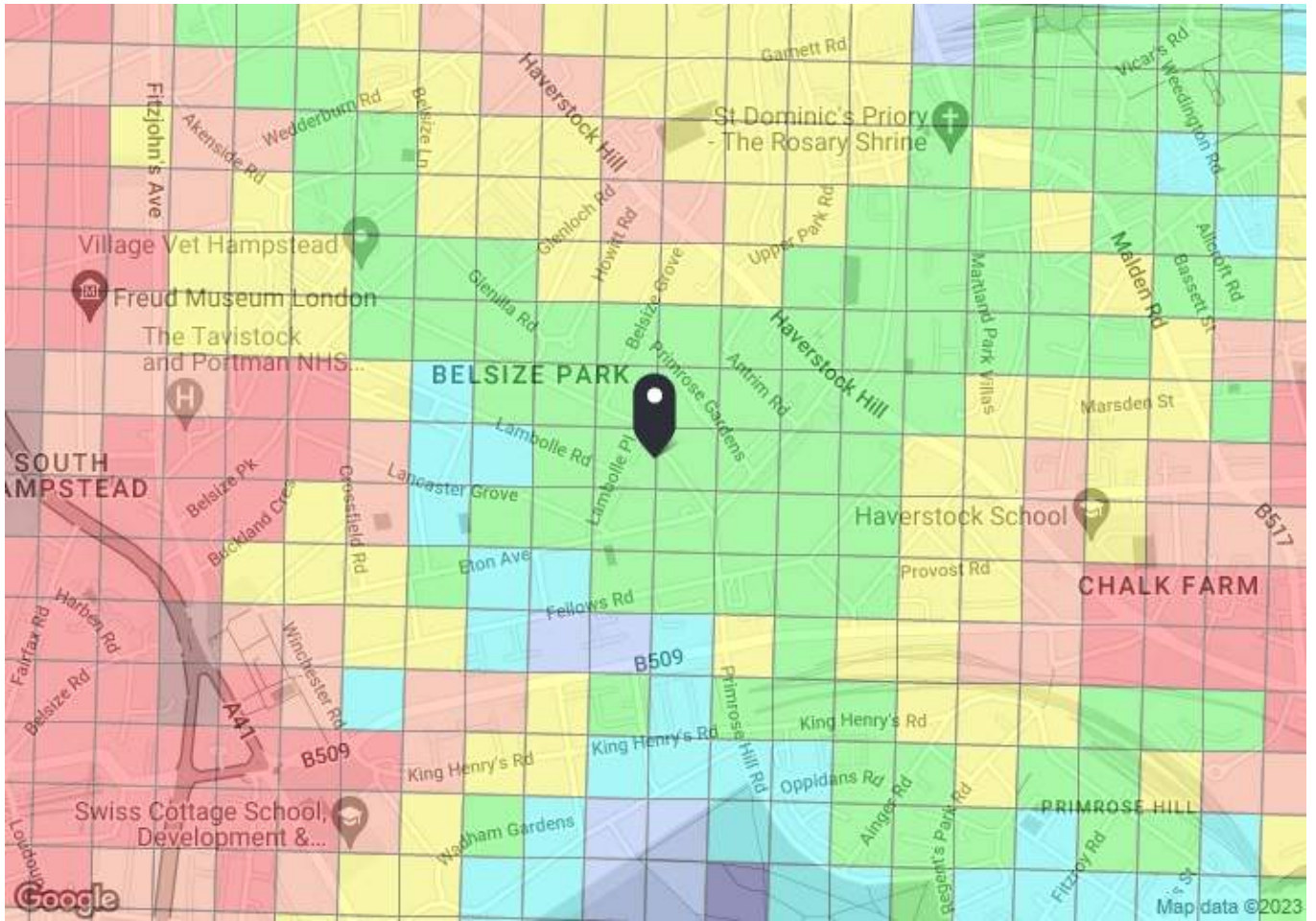
Drawing Title:
 Proposed Ground Floor Plan

Drawing No.: 4279 CDC XX GR DR A (GA) 100
Rev.: H



Appendix B – PTAL Report





PTAL output for Base Year
3

NW3 4NJ
Belsize Park Gardens, Belsize Park, London NW3 4NJ, UK
Easting: 527396, Northing: 184639

Grid Cell: 101985

Report generated: 15/02/2023

Calculation Parameters

Day of Week	M-F
Time Period	AM Peak
Walk Speed	4.8 kph
Bus Node Max. Walk Access Time (mins)	8
Bus Reliability Factor	2.0
LU Station Max. Walk Access Time (mins)	12
LU Reliability Factor	0.75
National Rail Station Max. Walk Access Time (mins)	12
National Rail Reliability Factor	0.75

Map key - PTAL

0 (Worst)	1a
1b	2
3	4
5	6a
6b (Best)	

Map layers

- PTAL (cell size: 100m)

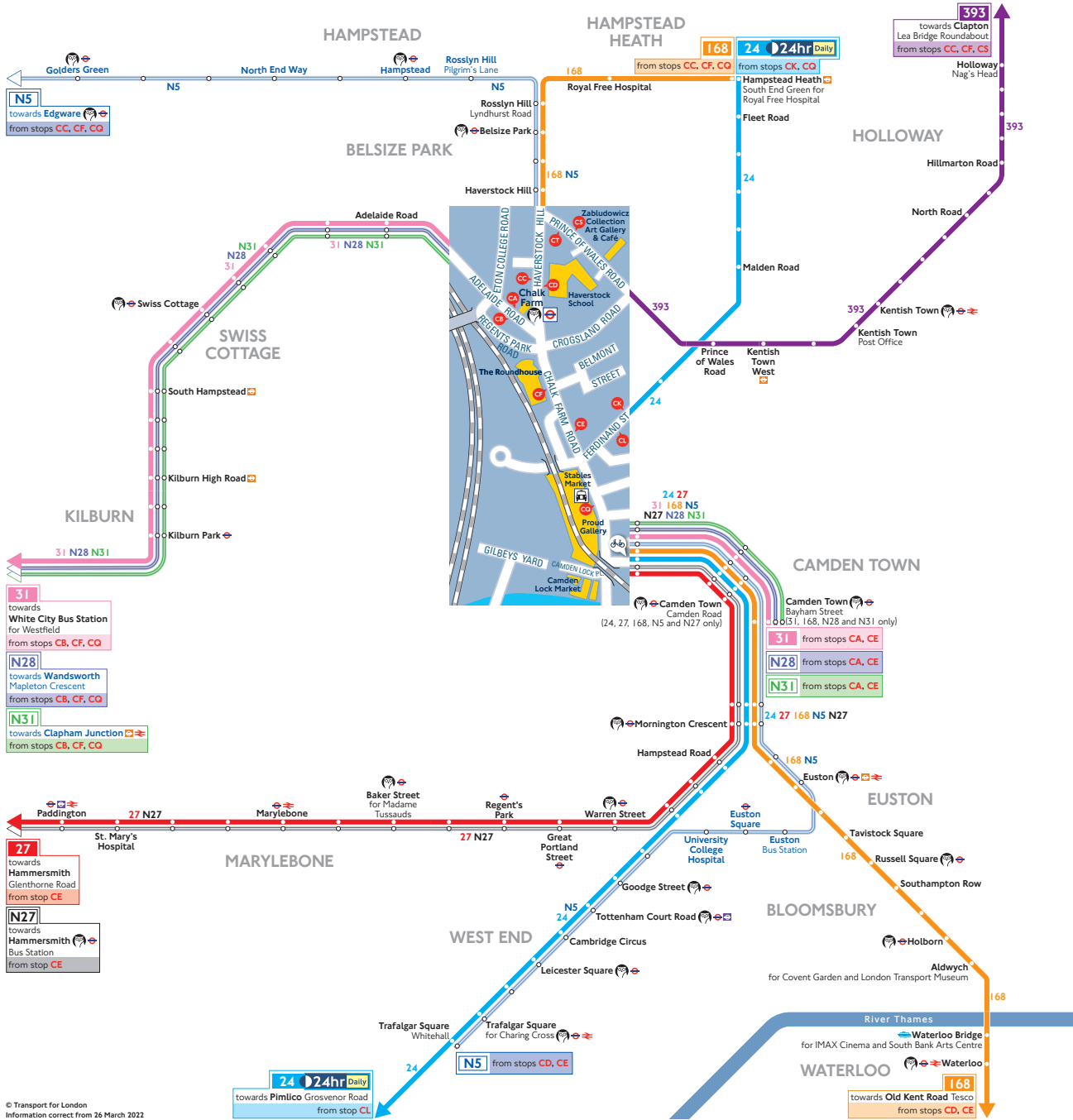
Calculation data

Mode	Stop	Route	Distance (metres)	Frequency(vph)	Walk Time (mins)	SWT (mins)	TAT (mins)	EDF	Weight	AI
Bus	BELSIZE PARK GARDENS	268	589.02	5	7.36	8	15.36	1.95	0.5	0.98
Bus	ADELAIDE R PRIMROSE HL R	31	464.01	10	5.8	5	10.8	2.78	0.5	1.39
Bus	HAVERSTOCK H DOWNSIDE CR	168	456.15	9	5.7	5.33	11.04	2.72	0.5	1.36
Bus	Englands L Belsize Pk Gs	C11	309.04	7.5	3.86	6	9.86	3.04	1	3.04
LUL	Belsize Park	'Edgware-Morden'	593.33	9	7.42	4.08	11.5	2.61	0.5	1.3
LUL	Belsize Park	'Morden-Edgware'	593.33	4.67	7.42	7.17	14.59	2.06	0.5	1.03
LUL	Belsize Park	'Kennington-Edgware'	593.33	14.67	7.42	2.79	10.21	2.94	1	2.94
Total Grid Cell AI:										12.04

Appendix C – Bus maps



Buses from Chalk Farm



© Transport for London
Information correct from 26 March 2022

How to use this map

- Find your destination on the map
- See the coloured lines on the map for the bus routes that go to your destination
- Check the map (at the end of each coloured line) for the bus stops to catch your bus from
- Use the central map to find the nearest bus stop for your route
- Look for the bus stop letters at the top of the stop (see example for stop **A** to the right)

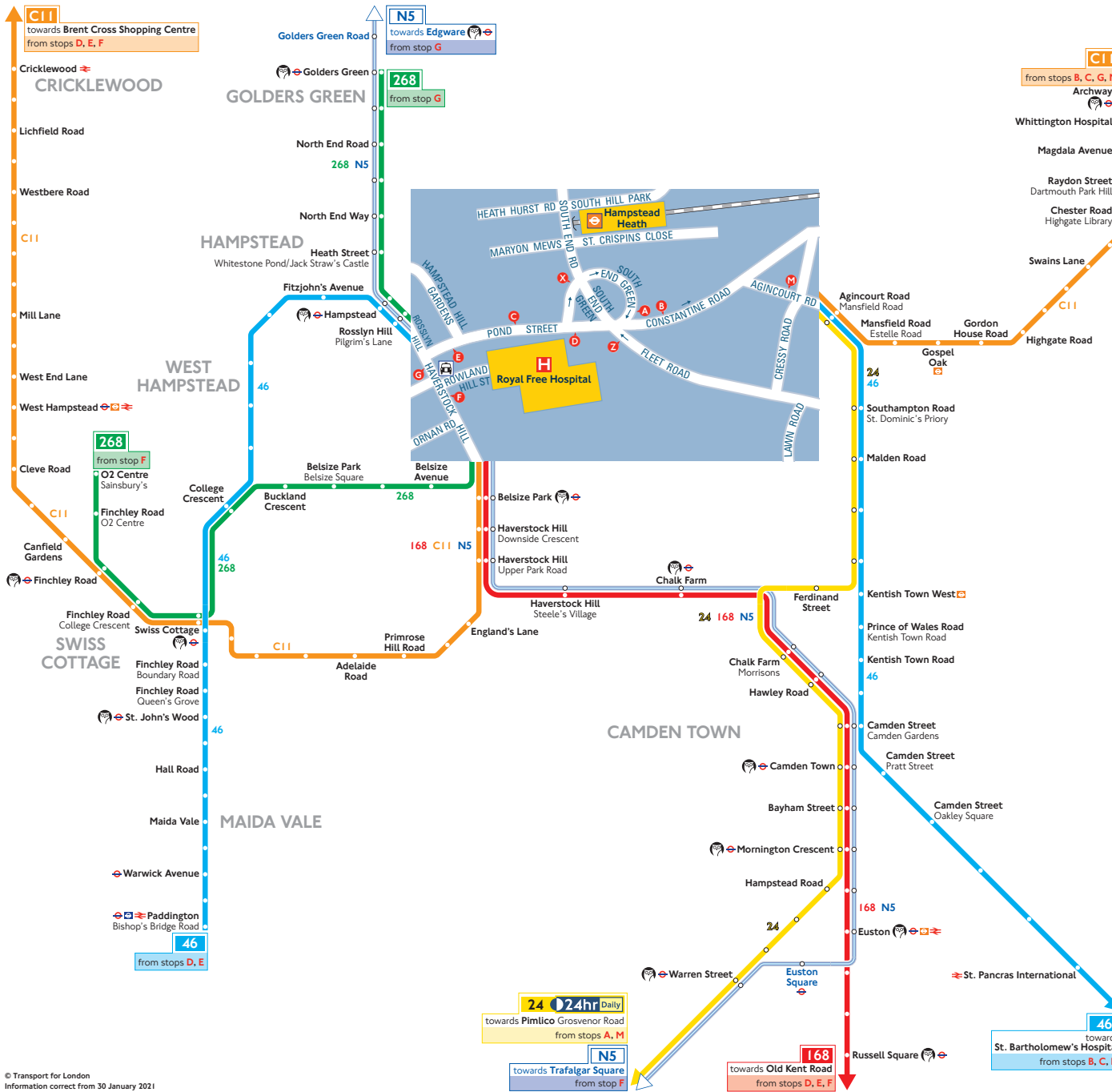
Key

	Connections with London Underground
	Connections with Elizabeth line
	Connections with National Rail
	Connections with river boats
	Cycle hire docking station
	Taxi rank
	Tube station with 24-hour service Friday and Saturday nights

Ways to pay

- Use contactless (card or device). It's the same fare as Oyster pay as you go and you don't need to top up
- Download the free TfL app to top up or buy a ticket anytime, anywhere, or visit tfl.gov.uk/oyster. Alternatively, find your nearest Oyster Ticket Stop at tfl.gov.uk/ticketstopfinder or visit your nearest TfL station
- The Hopper fare offers you unlimited pay as you go Bus and Tram journeys within one hour. Always use the same card or device to touch in
- If you fail to show on demand a ticket, validated smartcard or other travel authority valid for the whole of your journey you may be liable for a penalty fare or prosecuted.

Buses from Hampstead Heath (Royal Free Hospital)



How to use this map

- Find your destination on the map
- See the coloured lines on the map for the bus routes that go to your destination
- Check the map (at the end of each coloured line) for the bus stops to catch your bus from
- Use the central map to find the nearest bus stop for your route
- Look for the bus stop letters at the top of the stop (see example for stop A to the right)



Key

- Connections with London Underground
- Connections with London Overground
- Connections with TfL Rail
- Connections with National Rail
- Connections with river boats
- Tube station with 24-hour service Friday and Saturday nights

Ways to pay

- Use contactless (card or device). It's the same fare as Oyster pay as you go and you don't need to top up
- Download the free TfL app to top up or buy a ticket anytime, anywhere, or visit tfl.gov.uk/oyster. Alternatively, find your nearest Oyster Ticket Stop at tfl.gov.uk/ticketstopfinder or visit your nearest TfL station
- The Hopper fare offers you unlimited pay as you go Bus and Tram journeys within one hour. Always use the same card or device to touch in
- If you fail to show on demand a ticket, validated smartcard or other travel authority valid for the whole of your journey you may be liable for a penalty fare or prosecuted.