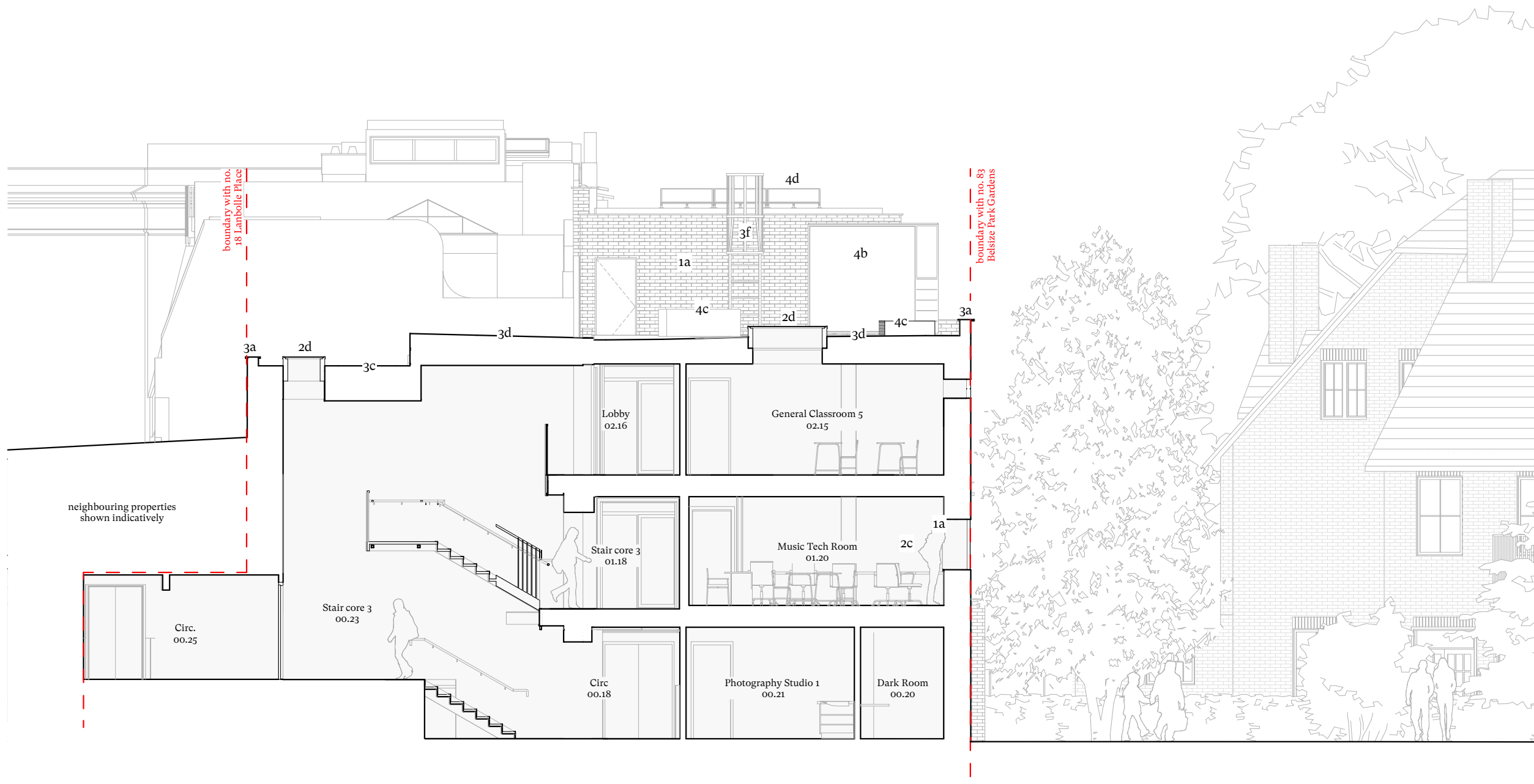


**A** Proposed Section DD  
Scale 1:100



**B** Proposed Section EE  
Scale 1:100

#### KEY

- |  |  |
|--|--|
| <b>1 Wall finishes</b>   | <b>3 Roofs</b>   |
| 1a Existing brick repaired / repointed as necessary                      | 3a New slimline light-coloured powdercoated aluminium coping                               |
| 1b New red brick to match existing                                       | 3b New sawtooth roof with grey membrane finish   |
| 1c New red brick, Flemish bond   | 3c New intensive green roof with gravel border   |
| 1d New red brick header course   | 3d New grey flat roof membrane   |
| 1e New dark brick, running bond  | 3e New light-coloured GRC facade trim  |
| 1f Existing render removed and facade re-rendered                        | 3f New roof access ladder  |
| 1g New grey fibre cement clad wall                                       |  |
| 1h New dark metal railing above boundary wall                            | <b>4 Services</b>  |
| 1i New perforated red brick  | 4a New dark-coloured powdercoated aluminium rainwater goods to replace existing throughout |
|  | 4b New air source heat pump  |
| <b>2 Fenestration</b>  | 4c New MVHR unit   |
| 2a New double-glazed light-coloured powdercoated aluminium framed window | 4d New photovoltaic panels   |
| 2b New double-glazed light-coloured powdercoated aluminium framed door   |  |
| 2c New glass blocks in new opening                                       | <b>5 Landscaping</b>   |
| 2d New flat rooflight  | 5a New planted bed with brickwork border   |
| 2e New pitched rooflight within sawtooth roof                            | 5b New tree within planted bed   |
| 2f New fire escape door to replace existing                              | 5c New climbing plants on support cables   |
| 2g New grey fibre cement clad sliding door                               | 5d New Sheffield-type cycle stand for 2no. visitor cycles                                  |
| 2h New light-coloured powdercoated aluminium spandrel panel              | 5e New dark metal gate   |
| 2i New glass blocks in existing opening                                  | 5f New signage   |