

AREA PLAN

71 KINGSWAY

LONDON, WC2B

Basement - Retail Unit 1

Net Internal Area

■	STORAGE	48.5 sq m	521 sq ft
■	ANCILLARY	29.2 sq m	315 sq ft

TOTAL NIA: 77.7 sq m 836 sq ft

The following has been INCLUDED in the TOTAL NIA:

Customer Toilets	17.7 sq m	191 sq ft
------------------	-----------	-----------

The following has been EXCLUDED from the TOTAL NIA:

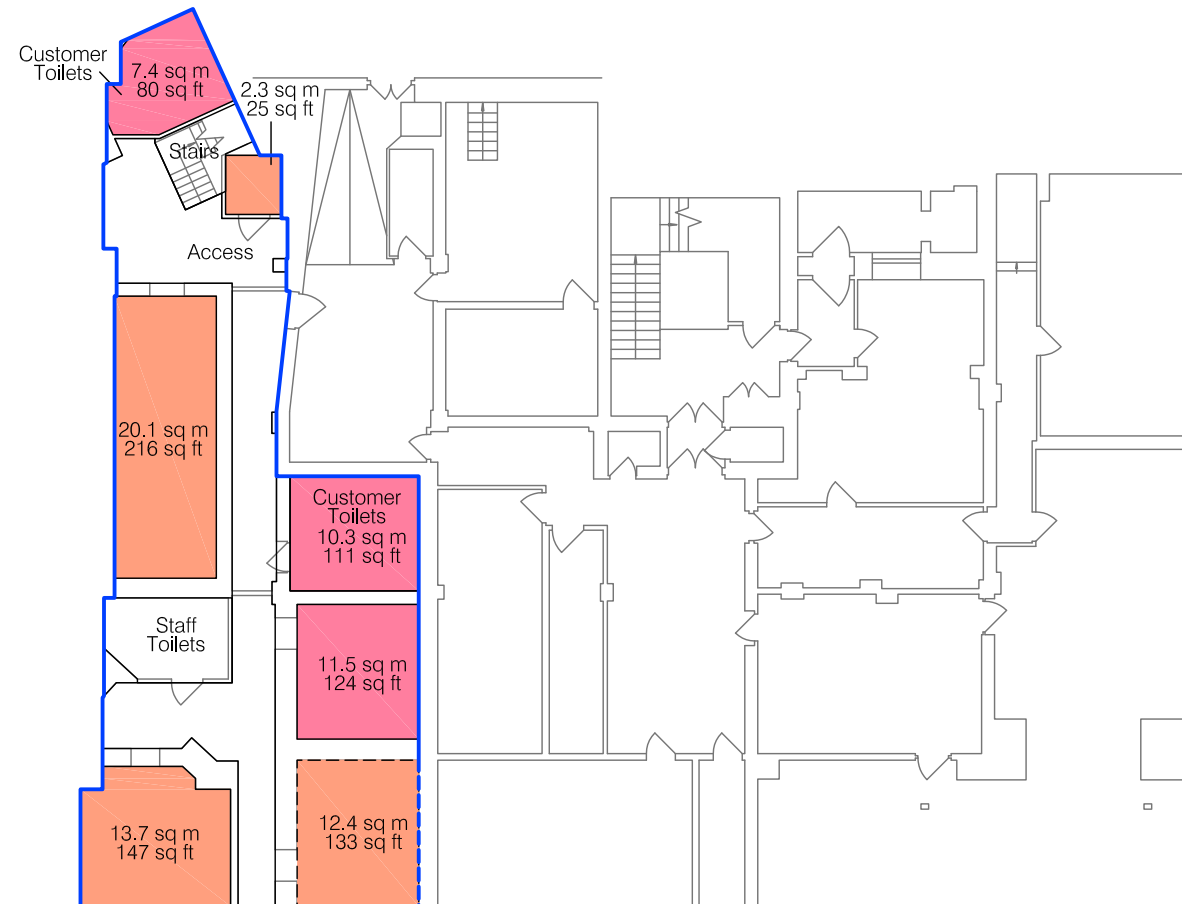
Access	36.8 sq m	396 sq ft
Staff Toilets	7.2 sq m	78 sq ft
Stairs	3.9 sq m	42 sq ft

Gross Internal Area

□	GIA	144.9 sq m	1560 sq ft
-------------------------------------	-----	------------	------------

TOTAL GIA: 144.9 sq m 1560 sq ft

WILD COURT



KINGSWAY

Dwg No. 24461-AB-R1

Issue A

January 2011

Scaled for presentation purposes

Plowman Craven
Regulated by RICS



T +44(0)1582 765566

W www.plowmancraven.co.uk

Condition of Site:

Occupied
Vacant
Heavy Fit-Out
Shell & Core
Under Construction
Cat A Fit-Out

Notes:

This drawing complies with the 6th edition of the RICS code and indicates the extent of the areas quoted, produced to an accuracy commensurate with standard presentation scales. It is held in a scaled digital CAD format.

Dashed line denotes assumed wall line. Wall line inaccessible at time of survey.

Revisions:

A - Original Issue (January 2011)