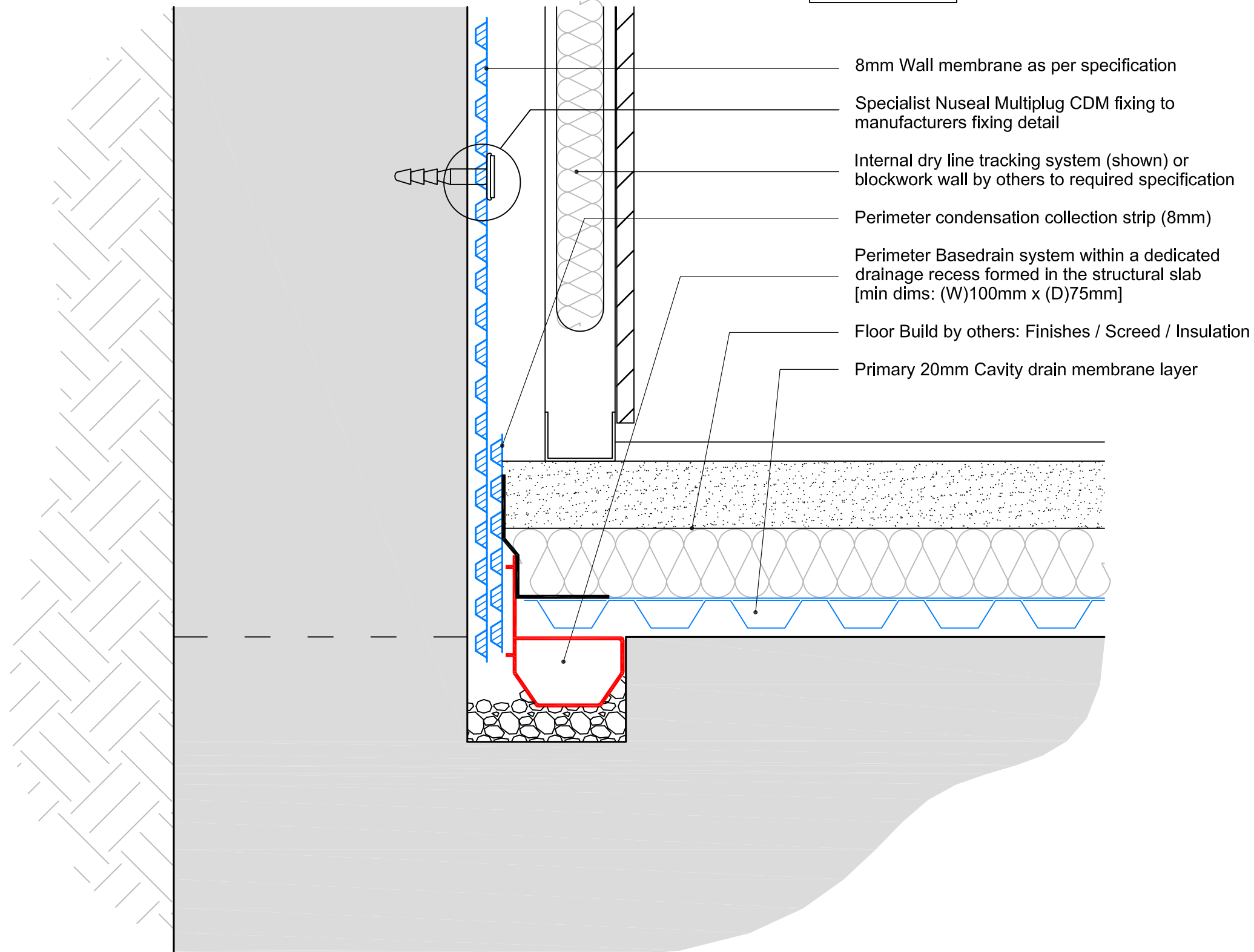


**INTERNAL**



- 8mm Wall membrane as per specification
- Specialist Nuseal Multiplug CDM fixing to manufacturers fixing detail
- Internal dry line tracking system (shown) or blockwork wall by others to required specification
- Perimeter condensation collection strip (8mm)
- Perimeter Basedrain system within a dedicated drainage recess formed in the structural slab [min dims: (W)100mm x (D)75mm]
- Floor Build by others: Finishes / Screed / Insulation
- Primary 20mm Cavity drain membrane layer

**INDICATIVE FLOOR/WALL DETAIL: OPTION A**

REV.	DATE	COMMENT

PROJECT:  
ADVANCED PRESERVATIONS

DRAWING TITLE:  
INDICATIVE FLOOR-WALL SECTION  
DETAILING CDM + RECESSED  
BASEDRAIN ARRANGEMENT

**OPTION A**

REVISION: -

SCALE: NTS

DRAWING NO.  
APL CDM OPTION A

NOTES: