

## 24 ENDELL ST

Installation : FACADE LIGHTING

Project number : 6161

Customer : PATRIZIA

Processed by : McCall

Date : 18.04.2023

The following values are based on precise calculations performed on calibrated lamps and luminaires, and their configurations, whereby gradual, unavoidable deviations can occur in practice. All guarantee claims are excluded for the specified data.

This exclusion of liability applies irrespective of the legal grounds for both damages and consequential damages suffered by users and third parties.

# 1 Luminaire data

## 1.1 OSRAM, LFD400T-G2-930-10 (4062172273916)

### 1.1.1 Data sheet

---

**Manufacturer: OSRAM**

**4062172273916      LFD400T-G2-930-10**

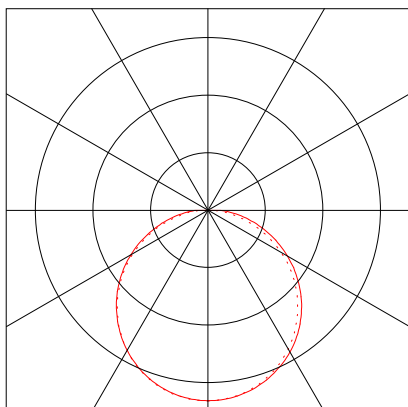
#### Luminaire data

Luminaire efficiency : 100%  
Luminaire efficacy : 69.86 lm/W  
Classification : A40 ↓99.9% ↑0.1%  
CIE Flux Codes : 45 76 93 100 100  
UGR 4H 8H : 26.1 / 25.3  
Power : 7.3 W  
Luminous flux : 510 lm

#### Equipped with

Quantity : 1  
Designation : LED  
Colour : 3060  
Luminous flux : 510 lm  
Colour reproduction : 90

Dimensions : 1000 mm x 14 mm x 10 mm



# 1 Luminaire data

## 1.2 FLOS Outdoor, POINTBREAK W2 UP&DOWN (F023J45A0xx)

### 1.2.1 Data sheet

Manufacturer: FLOS Outdoor

**F023J45A0xx      POINTBREAK W2 UP&DOWN**

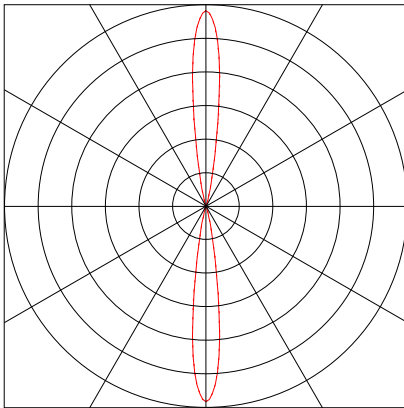
#### Luminaire data

Luminaire efficiency : 100%  
Luminaire efficacy : 74.38 lm/W  
Classification : C84 ↓50.0% ↑50.0%  
CIE Flux Codes : 98 100 100 50 100  
UGR 4H 8H : <10.0 / <10.0  
Power : 32 W  
Luminous flux : 2380 lm

#### Equipped with

Quantity : 2  
Designation :  
Colour : 4000  
Luminous flux : 1190 lm  
Colour reproduction : 80

Dimensions : 120 mm x 120 mm x 337 mm



## 2 BETTERTON ST

### 2.1 Description, BETTERTON ST

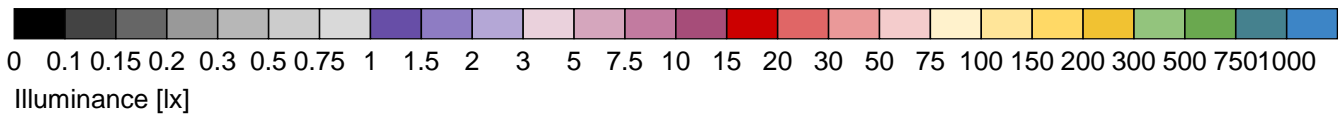
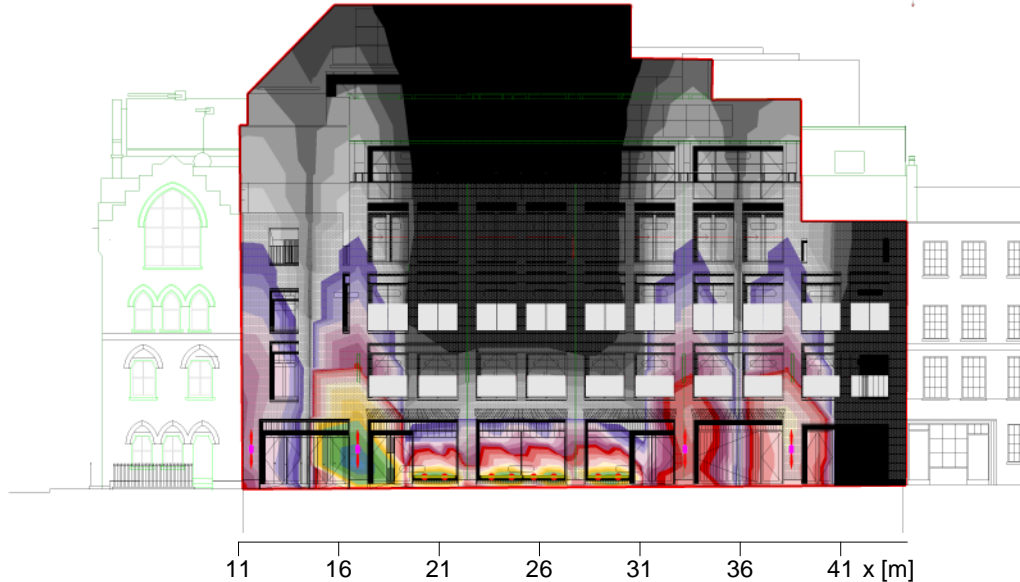
#### 2.1.1 Floor plan



## 2 BETTERTON ST

### 2.2 Summary, BETTERTON ST

#### 2.2.1 Result overview, Evaluation area 1



#### General

Calculation algorithm used	Average indirect fraction
Maintenance factor	0.80
Total luminous flux	13600.00 lm
Total power	186.4 W
Total power per area (694.51 m <sup>2</sup> )	0.27 W/m <sup>2</sup> (1.63 W/m <sup>2</sup> /100lx)

#### Evaluation area 1

#### Reference plane 1.1

	Horizontal
$\bar{E}_m$	16.4 lx
$E_{min}$	0 lx
$E_{min}/\bar{E}_m (U_o)$	0.00
$E_{min}/E_{max} (U_d)$	0.00
Position	0.00 m

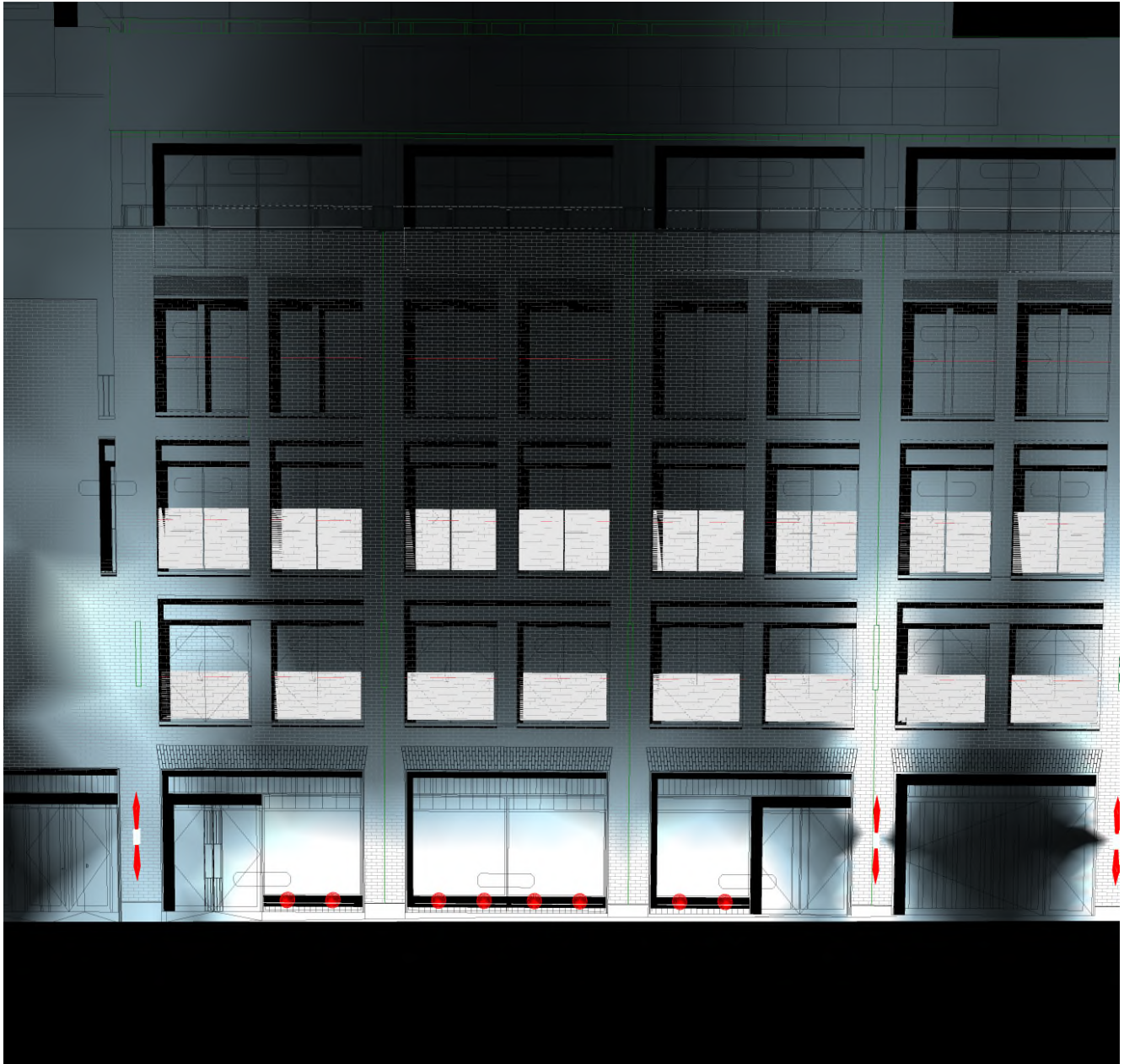
#### Type No. Make

<b>OSRAM</b>	
1	8 x
Order No.	: 4062172273916
Luminaire name	: LFD400T-G2-930-10
Equipment	: 1 x LED 7.3 W / 510 lm
<b>FLOS Outdoor</b>	
2	4 x
Order No.	: F023J45A0xx
Luminaire name	: POINTBREAK W2 UP&DOWN
Equipment	: 2 x / 1190 lm

## 2 BETTERTON ST

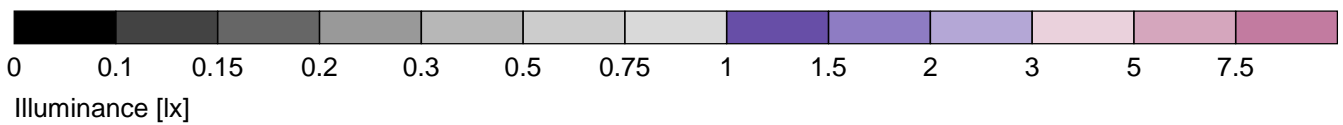
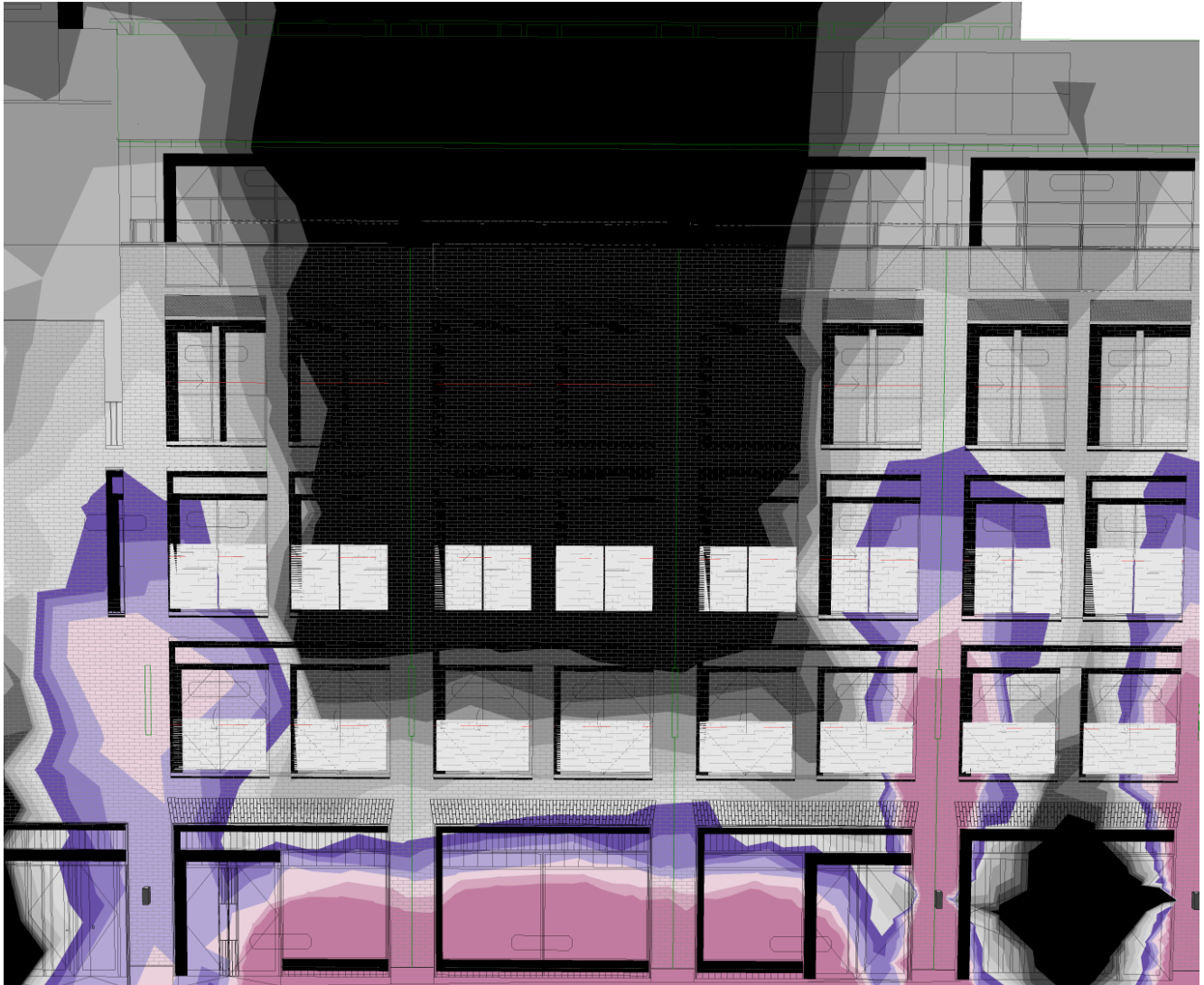
### 2.3 Calculation results, BETTERTON ST

#### 2.3.1 3D luminance, View 1



## 2.3 Calculation results, BETTERTON ST

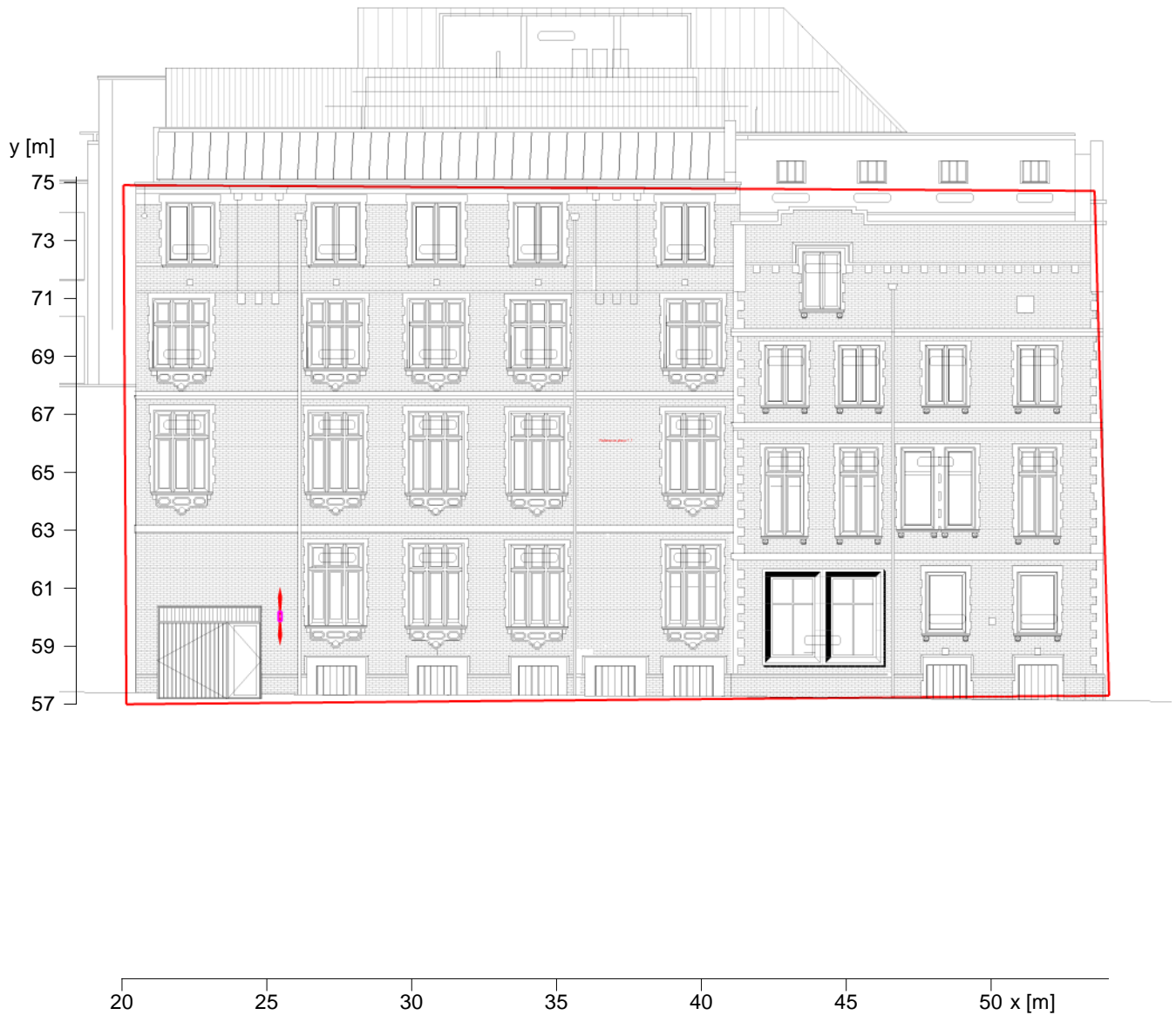
### 2.3.2 3D pseudo colours, View 1 (E)



### 3 SHORTS GARDENS

#### 3.1 Description, SHORTS GARDENS

##### 3.1.1 Floor plan

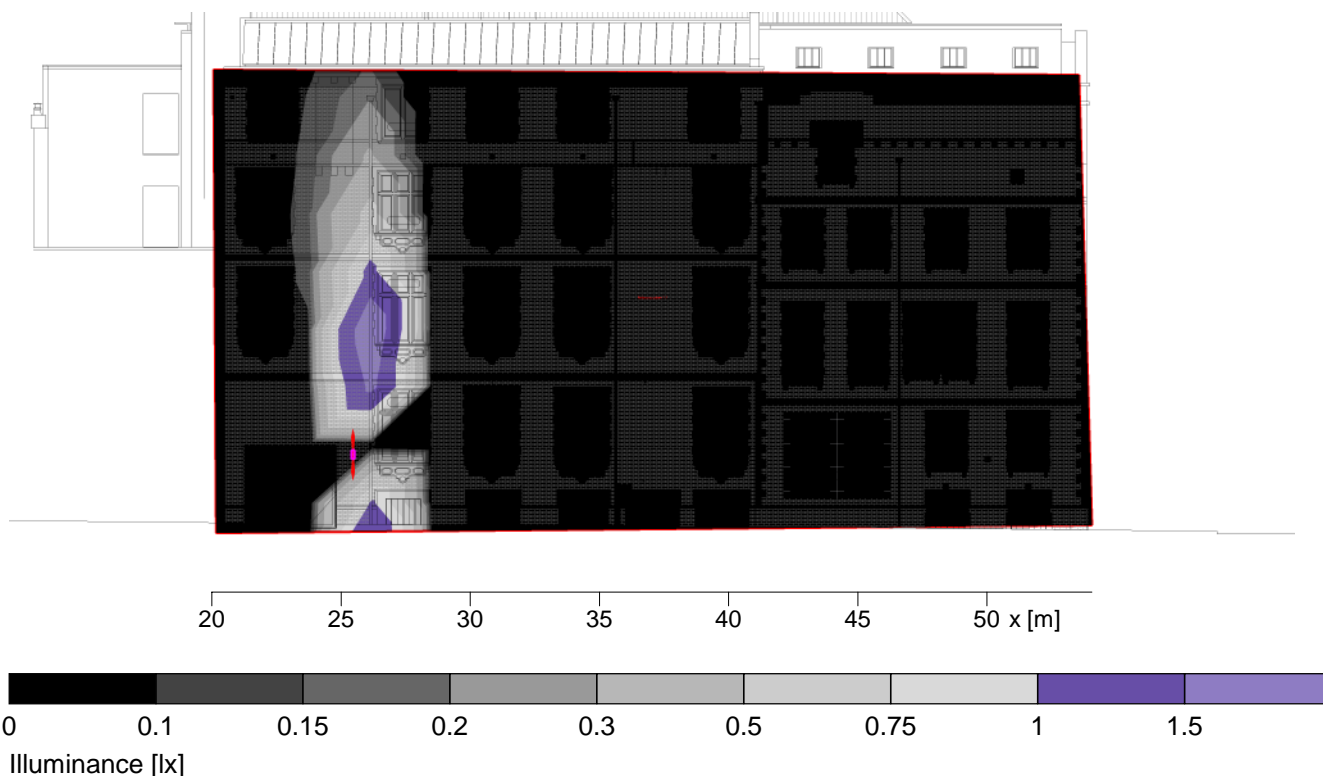




### 3 SHORTS GARDENS

#### 3.2 Summary, SHORTS GARDENS

##### 3.2.1 Result overview, Evaluation area 1



#### General

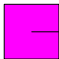
Calculation algorithm used	Average indirect fraction
Height (phot. centre)	0.05 m
Maintenance factor	0.80
Total luminous flux	2380.00 lm
Total power	32.0 W
Total power per area (594.82 m <sup>2</sup> )	0.05 W/m <sup>2</sup> (77.73 W/m <sup>2</sup> /100lx)

#### Evaluation area 1

#### Reference plane 1.1

$\bar{E}_m$	Horizontal
$E_{min}$	0.07 lx
$E_{min}/\bar{E}_m (U_o)$	0 lx
$E_{min}/E_{max} (U_d)$	---
Position	0.00 m

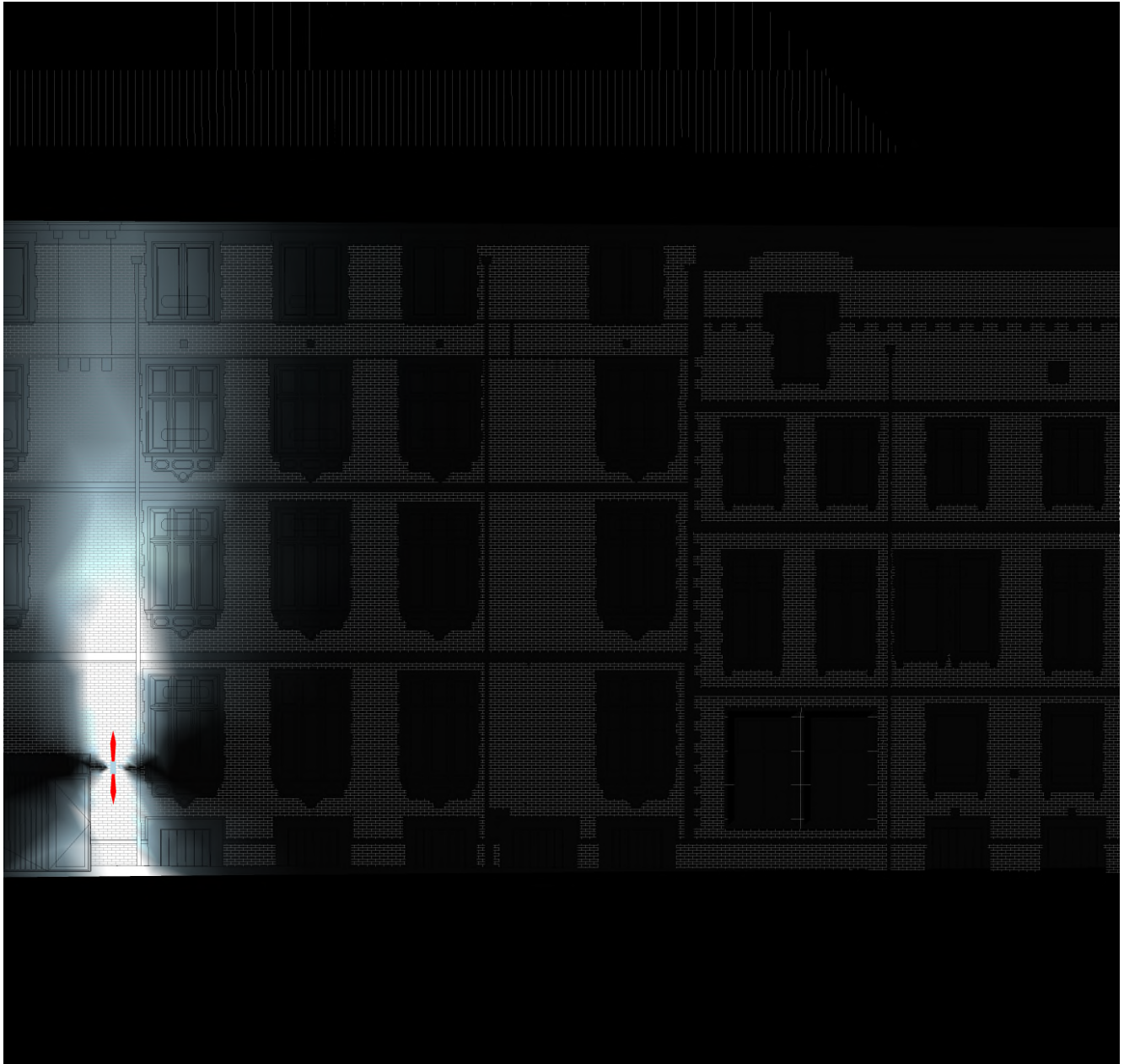
#### Type No. Make

2	1 x	<b>FLOS Outdoor</b>
	Order No.	: F023J45A0xx
	Luminaire name	: POINTBREAK W2 UP&DOWN
	Equipment	: 2 x / 1190 lm

### 3 SHORTS GARDENS

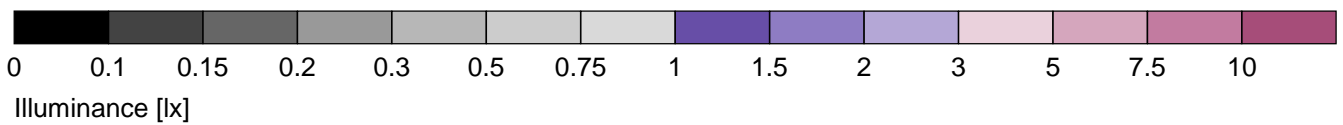
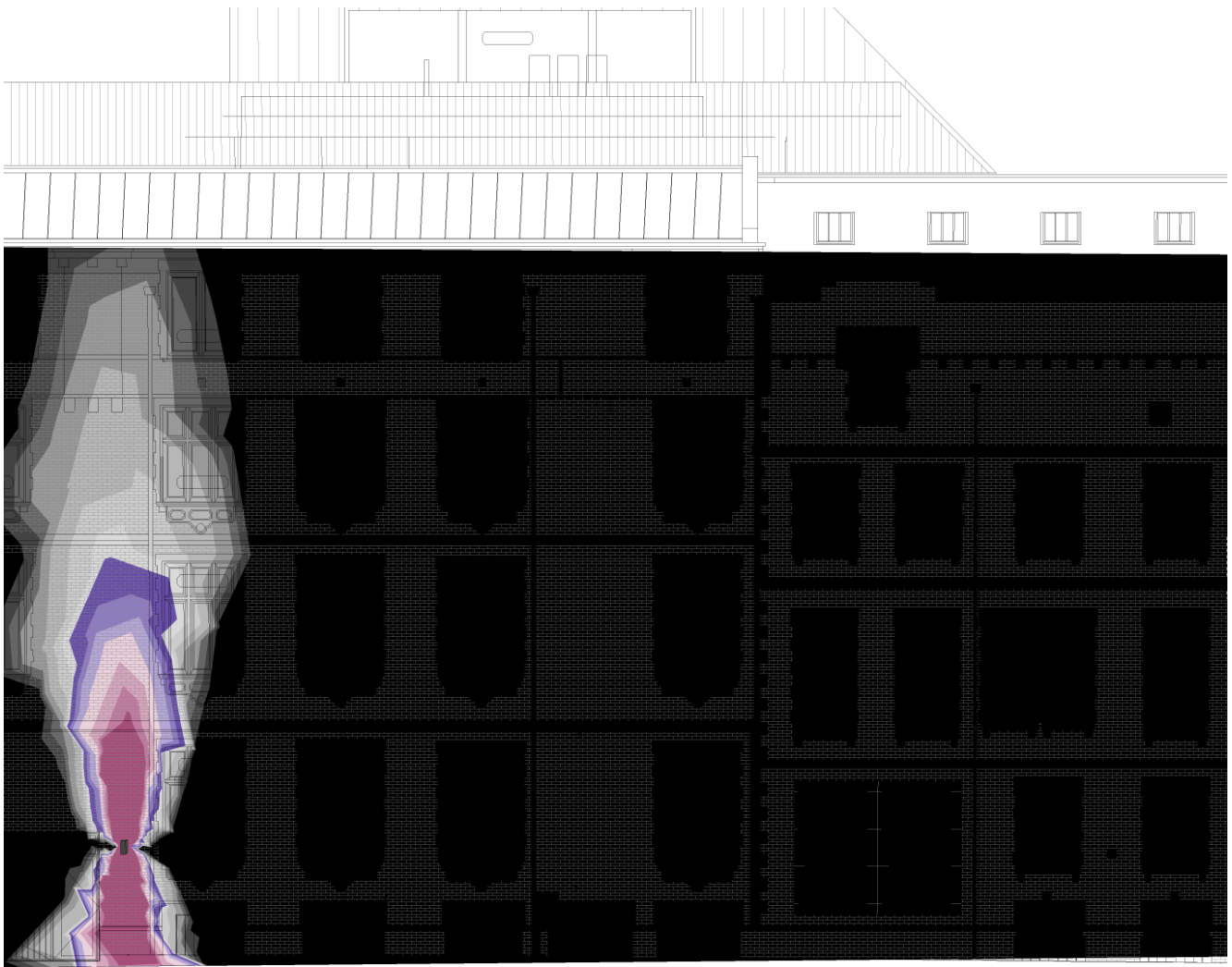
#### 3.3 Calculation results, SHORTS GARDENS

##### 3.3.1 3D luminance, View from above



### 3.3 Calculation results, SHORTS GARDENS

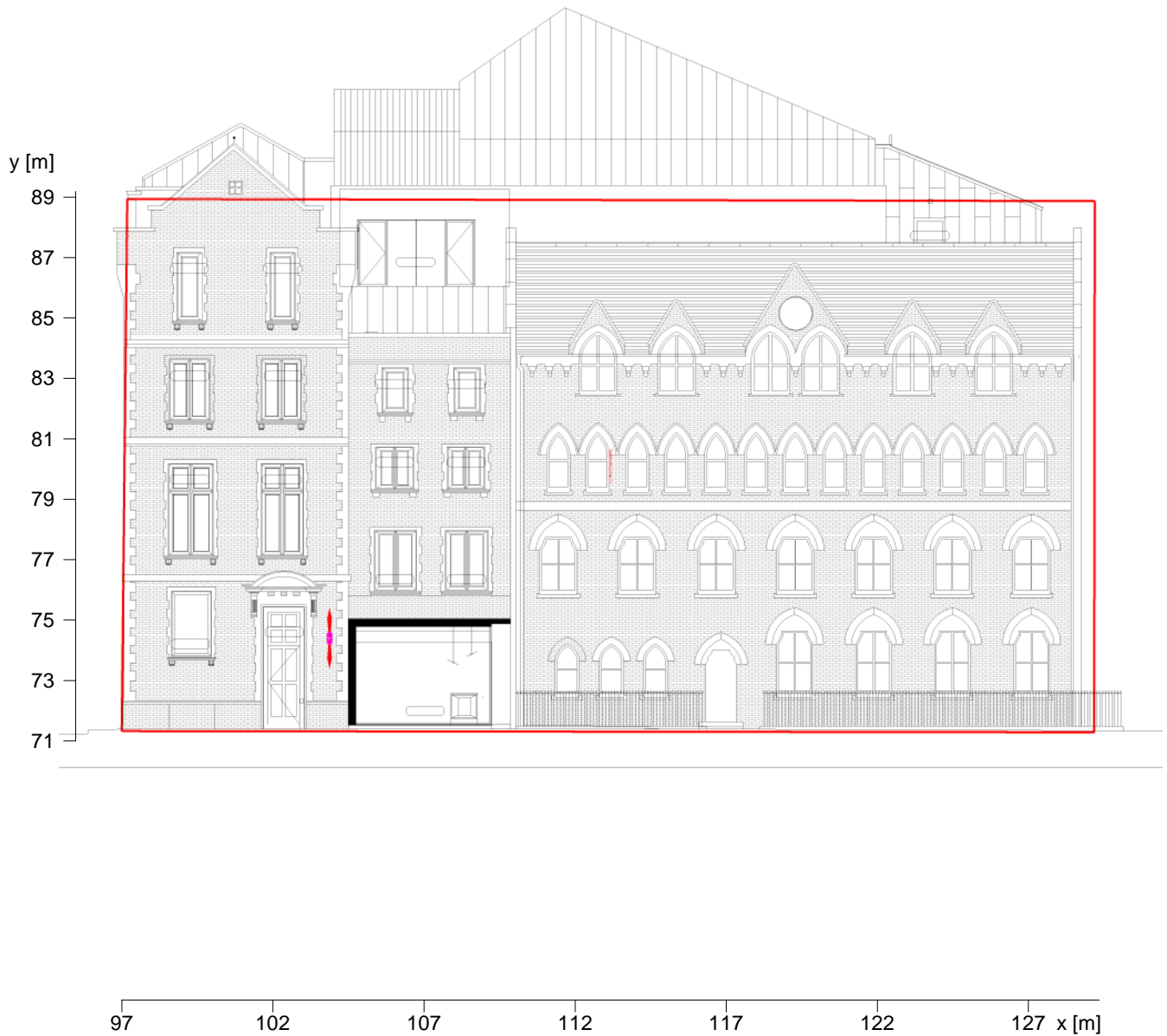
#### 3.3.2 3D pseudo colours, View from above (E)



## 4 ENDELL ST

### 4.1 Description, ENDELL ST

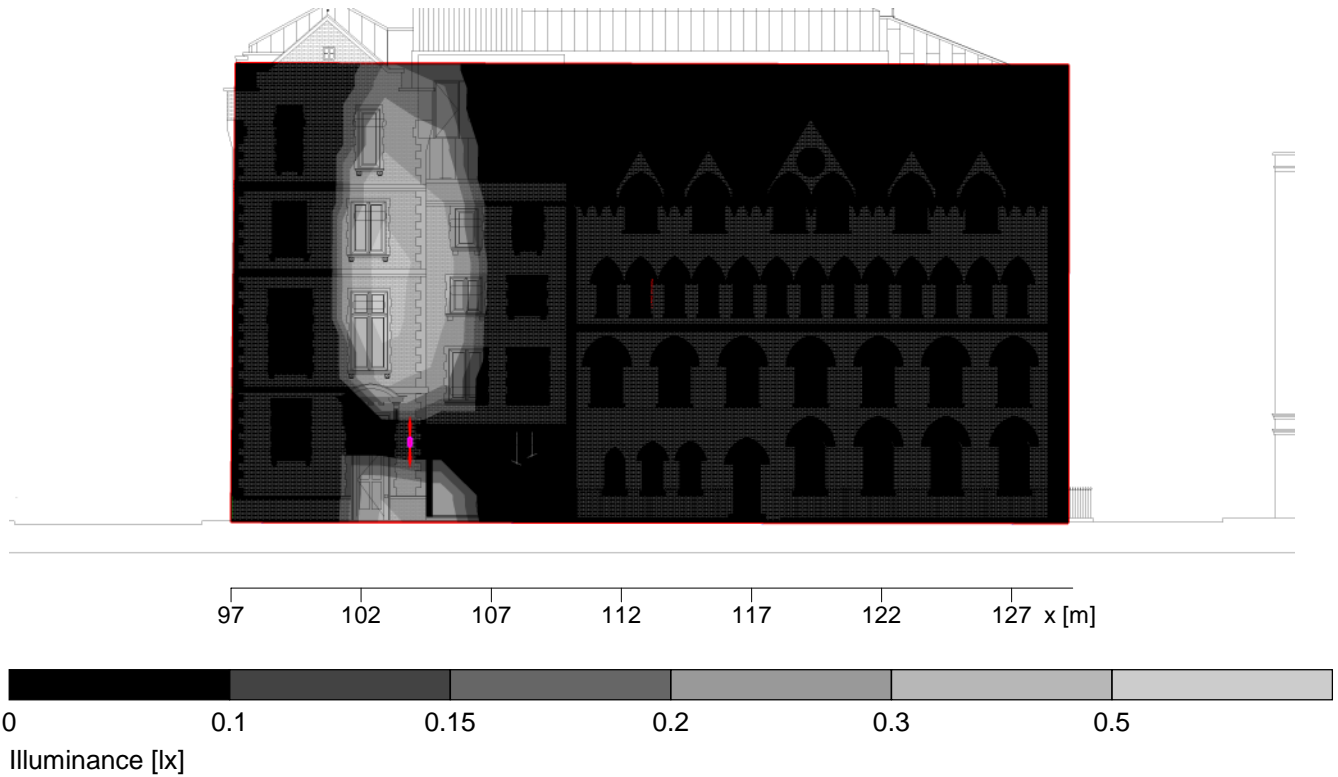
#### 4.1.1 Floor plan



## 4 ENDELL ST

### 4.2 Summary, ENDELL ST

#### 4.2.1 Result overview, Evaluation area 1



#### General

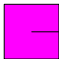
Calculation algorithm used	Average indirect fraction
Height (phot. centre)	0.05 m
Maintenance factor	0.80
Total luminous flux	2380.00 lm
Total power	32.0 W
Total power per area (564.20 m <sup>2</sup> )	0.06 W/m <sup>2</sup> (133.31 W/m <sup>2</sup> /100lx)

#### Evaluation area 1

#### Reference plane 1.1

$\bar{E}_m$	Horizontal
$E_{min}$	0 lx
$E_{min}/\bar{E}_m (U_o)$	---
$E_{min}/E_{max} (U_d)$	---
Position	0.00 m

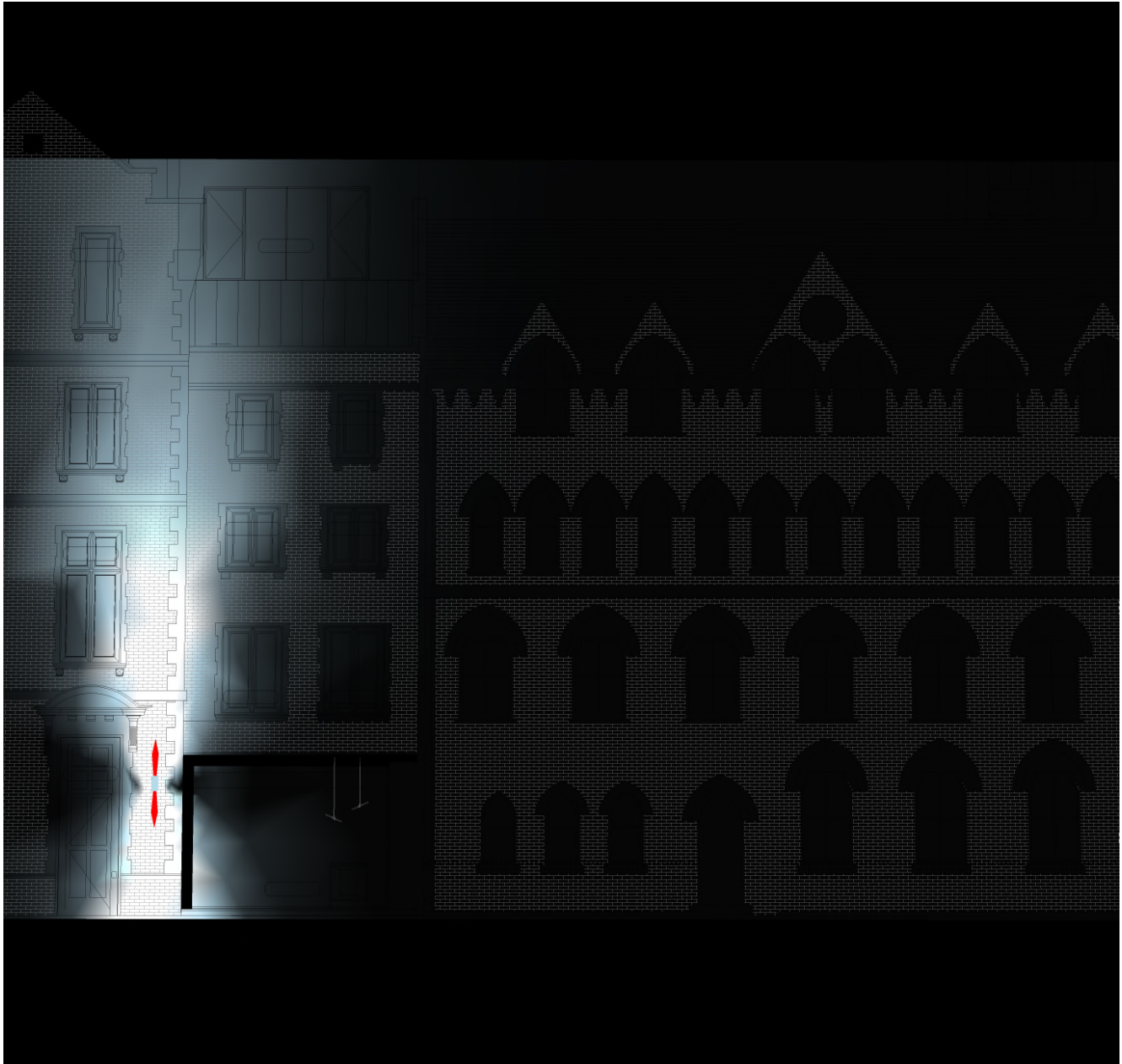
#### Type No. Make

2	1 x	<b>FLOS Outdoor</b>
		Order No. : F023J45A0xx
		Luminaire name : POINTBREAK W2 UP&DOWN
		Equipment : 2 x / 1190 lm

## 4 ENDELL ST

### 4.3 Calculation results, ENDELL ST

#### 4.3.1 3D luminance, View from above



### 4.3 Calculation results, ENDELL ST

#### 4.3.2 3D pseudo colours, View from above (E)

