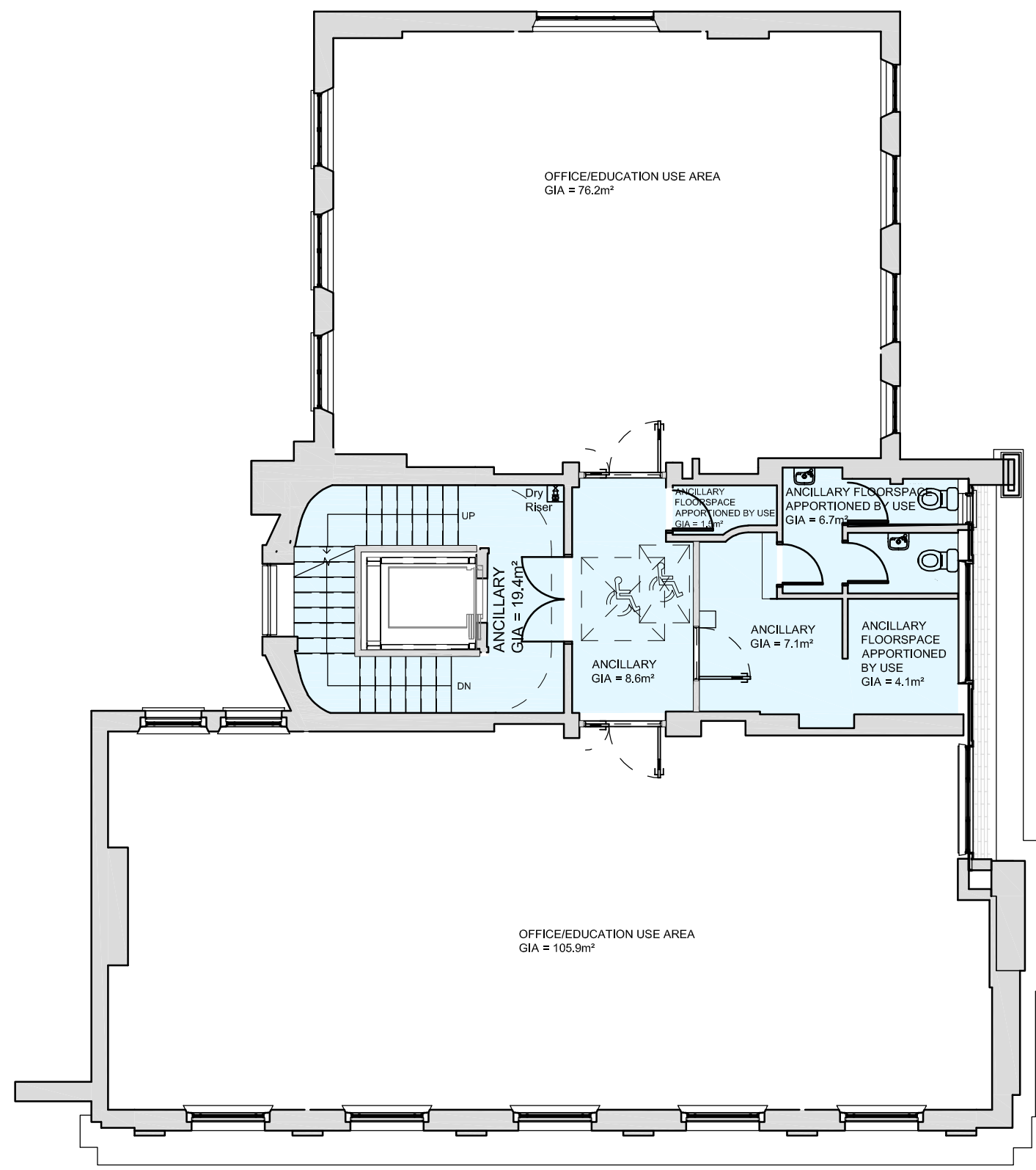


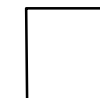
All residual hazards refer to Design Risk Assessment.



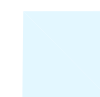
**KEY:**



DENOTES CLASS E 'OFFICE' USE AREA  
 AREA IN m² AS NOTED



DENOTES OFFICE/EDUCATION USE AREA  
 AREA IN m² AS NOTED



DENOTES ANCILLARY FLOORSPACE APPORTIONED BY USE  
 AREA IN m² AS NOTED

P05	Updates as requested - Planning Issue	14.08.23	DCS	ALE
P04	For Change of Use planning submission, Class E 'Office' Use Area designations omitted from office rooms. Communal Areas established as Ancillary Floorspace.	09.08.23	DCS	ALE
P03	For Change of Use planning submission, Class E 'Office' Use Area designations distinguished in blue outlines from 'Office/Education Use Areas'	19.07.23	DCS	ALE
P02	Change of Use to Dual Use - Planning Issue	24.11.21	VG	JS
P01	Change of Use - Planning Issue	23.11.21	VG	JS

Revision Date Dm Chk

Client  
 University of London

Project  
 Dilke House  
 1 Malef Street, London, WC1E 7JN

Drawing Title  
 EA-L04 Fourth Floor  
 Proposed General Arrangement Plan

Suitability Status  
 PL - Suitable for Planning

Job No.	Scale	Site	Rev
200083	1:100	@ A3	P05

Drawing Number  
 UOL-PEV-DH-04-DR-A-1245

Project Code - Originator - Zone - Level - Type - Role - Number

