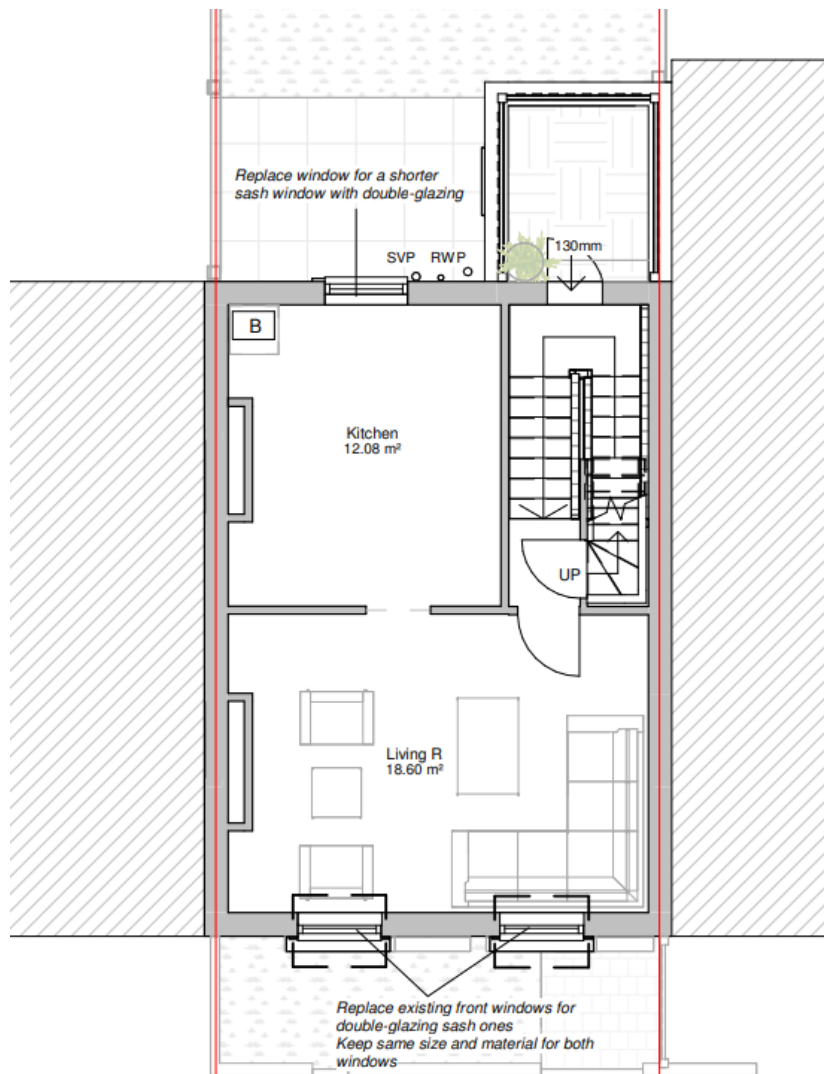


26B Healey Road - Design and Access Statement

Project Overview:

The proposed project involves the replacement of existing windows with matching windows of the same size, style and material. The image below in figure 1 illustrates the windows to be changed.



The objective of the proposal is to maintain the historical integrity of the property while improving energy efficiency and functionality.

Design Rationale:

The new window design has been carefully chosen to respect the architectural heritage of the conservation area. We have selected materials and proportions that closely match the original windows that will improve the quality of space for the clients living within the property.

Window Design:



The design of the replacement windows will replicate a similar type of window in the building and nearby structures. The current casement windows will be replaced with sash windows, ensuring a seamless change. This approach ensures a seamless transition that respects the historical significance of the property and the conservation area. The replacement windows will be crafted using timber, to match the existing windows. The choice of timber ensures both aesthetic continuity and durability.

Figure 2 below illustrates the current state of the windows on the property:



Figure 2: image showing the windows of 26B Healey Road

Conclusion:

This design and access statement reflects our commitment to preserving the historical significance of the conservation area while upgrading the property's windows for improved energy efficiency and functionality.

We are dedicated to adhering to all regulations and guidelines to ensure a successful and respectful window replacement project at 26B Healey Road.