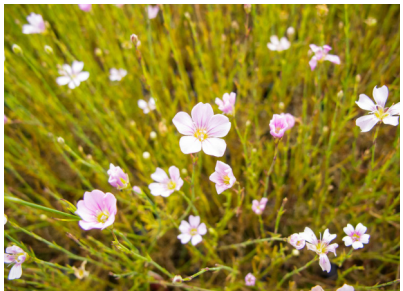




Specialists in Roofing  
and Waterproofing

# Med0 S1 Wildflower Seed Mix

## Product Data Sheet



# Med0 S1 Wildflower Seed Mix

## Flowering season

Common name	Mix %	Colour	Annually	JAN	FEB	MAR	APR	MAY	JUN	JUL	AUG	SEPT	OCT	NOV	DEC	Common to mixes		
Agrimony	6	Yellow	July - September							*	*	*				S1	S2	S3
Birdsfoot Trefoil	6	Yellow	June - September						*	*	*	*				S1		
Bladder Campion	5	White	June - August						*	*	*					S1		
Bulbous Buttercup	5	Yellow	May - June					*	*							S1	S2	
Common Knapweed	4	Purple	May - October					*	*	*	*	*	*			S1	S2	S3
Common Toadflax	1	Yellow	June - September						*	*	*	*				S1		
Cowslip	6	Yellow	March - May			*	*	*								S1	S2	S3
Field Scabious	6	Mauve	July - August							*	*					S1	S2	S3
Hoary Plantain	3	Pink	June - July						*	*						S1	S2	
Kidney Vetch	6	Yellow	June - September						*	*	*	*				S1	S2	
Lady's Bedstraw	6	Yellow	July - September							*	*	*				S1		
Meadow Buttercup	5	Yellow	April - October				*	*	*	*	*	*	*			S1		
Musk Mallow	4	Pink	July - September							*	*	*				S1		
Oxeye Daisy	4	White	June - August						*	*	*					S1	S2	
Perforate St Johns Wart	2	Yellow	July - September							*	*	*				S1		
Rough Hawkbit	5	Yellow	June - September						*	*	*	*				S1	S2	S3
Salad Burnet	6	Red	May - August					*	*	*	*					S1	S2	
Selfheal	6	Purple	June - August						*	*	*					S1	S2	S3
Vipers bugloss	3	Blue	May - August					*	*	*	*					S1		
Wild Basil	3	Mauve	July - August							*	*					S1	S2	
Wild Marjoram	4	Purple	July - September							*	*	*				S1	S2	
Wild Mignonette	4	Yellow	June - September						*	*	*	*				S1	S2	

# Med0 S1 Wildflower Seed Mix

## General Information

**Radmat S1 Wildflower Seed Mix** is designed to replicate natural planting, combining species that will enhance the growth of each other.

## Timing

Seeds need both warmth and moisture to grow and may be sown at any time of year when these conditions are met.

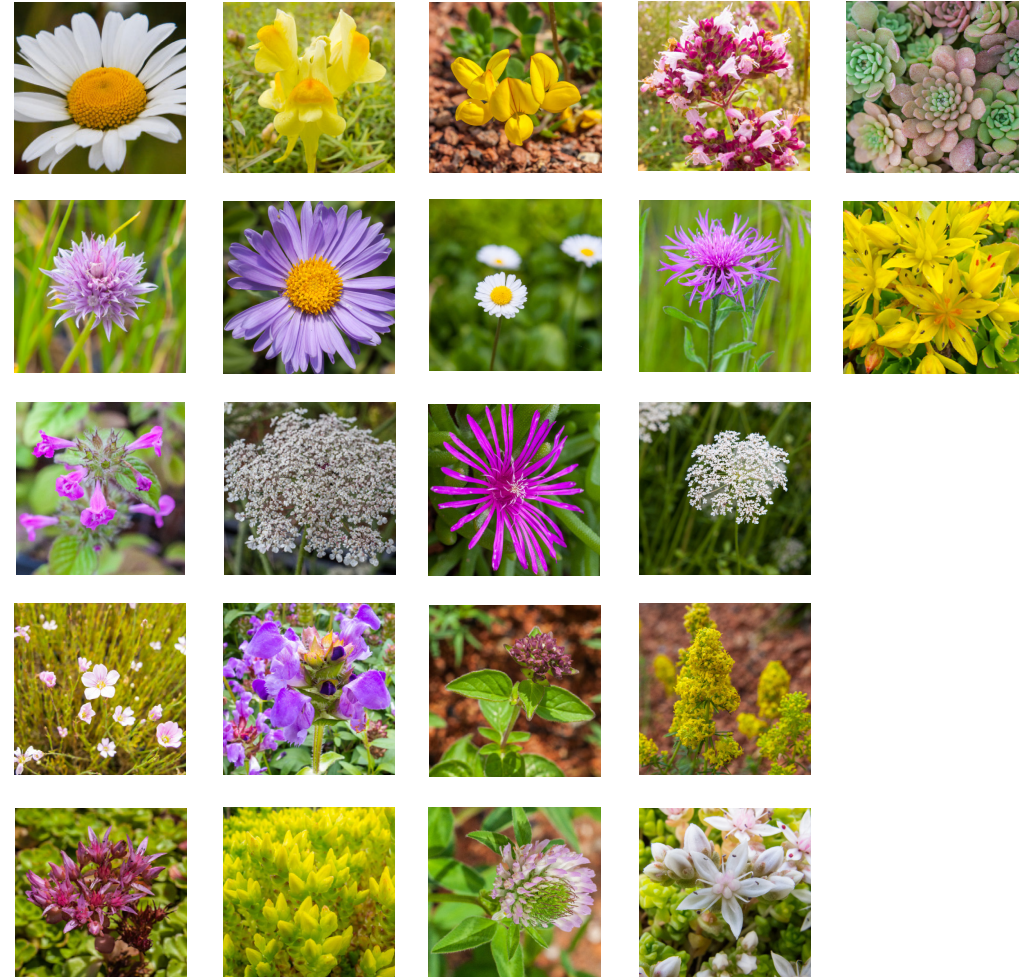
Between August and September, and March and April, is typically the best time to sow in of the UK. If sowing in May, June and July enhanced irrigation will be required unless in the wetter western regions of the UK.

## Directions of Application

The appropriate Radmat Growing Medium must be installed to the specified depth allowing for settlement. Recommended sowing rates are 2-4g/m<sup>2</sup>, a rate allows for an extended period of establishment leaving room for both fast growing grasses and slower germinating flower seeds. Avoid sowing too heavily as this can lead to overcrowding or an imbalance in the establishment: the mix is designed to work optimally at the specified rate.

## Fire performance

Approved Document B *Fire Safety* points to the DCLG document *Fire Performance of Green Roofs and Walls* for best practice guidance in achieving Regulation 7(2) fire compliance with a green roof. DCLG *Fire Performance of Green Roofs and Walls* states that the compliance requirements for achieving Broof(t4) are a growing medium layer of a minimum 80mm and an organic content of not more than 50% (<https://www.gov.uk/government/publications/fire-performance-of-green-roofs-and-walls>). In addition, The Green Roof Organisation (GRO) Code of Best Practice, also recommends fire breaks consisting of 50mm deep 20/40mm rounded ballast are used at perimeters and penetrations. Gravel fire/vegetation breaks should be 500mm wide where they abut habitable space but can be reduced to 300mm in some circumstances. Key to ensuring ongoing fire performance of a green roof, and the plant performance, is maintenance as some plants will die back, others will shed leaves naturally during their lifecycle and invasive species will try to take hold. These factors all create additional organic matter that could poses a fire spread risk on the roof therefore unwanted organic matter should be removed as part of the maintenance program.



This information given in good faith and is based on the latest knowledge available to Radmat Building products Ltd. Whilst every effort has been made to ensure that the contents of the publication are current while going to press, customers are advised that products, techniques and codes of practice are under constant review and liable to change without notice. For further information on Radmat products and services please call **01858 410372**, email [techenquiries@radmat.com](mailto:techenquiries@radmat.com) or visit our website [www.radmat.com](http://www.radmat.com) **JAN 2021**