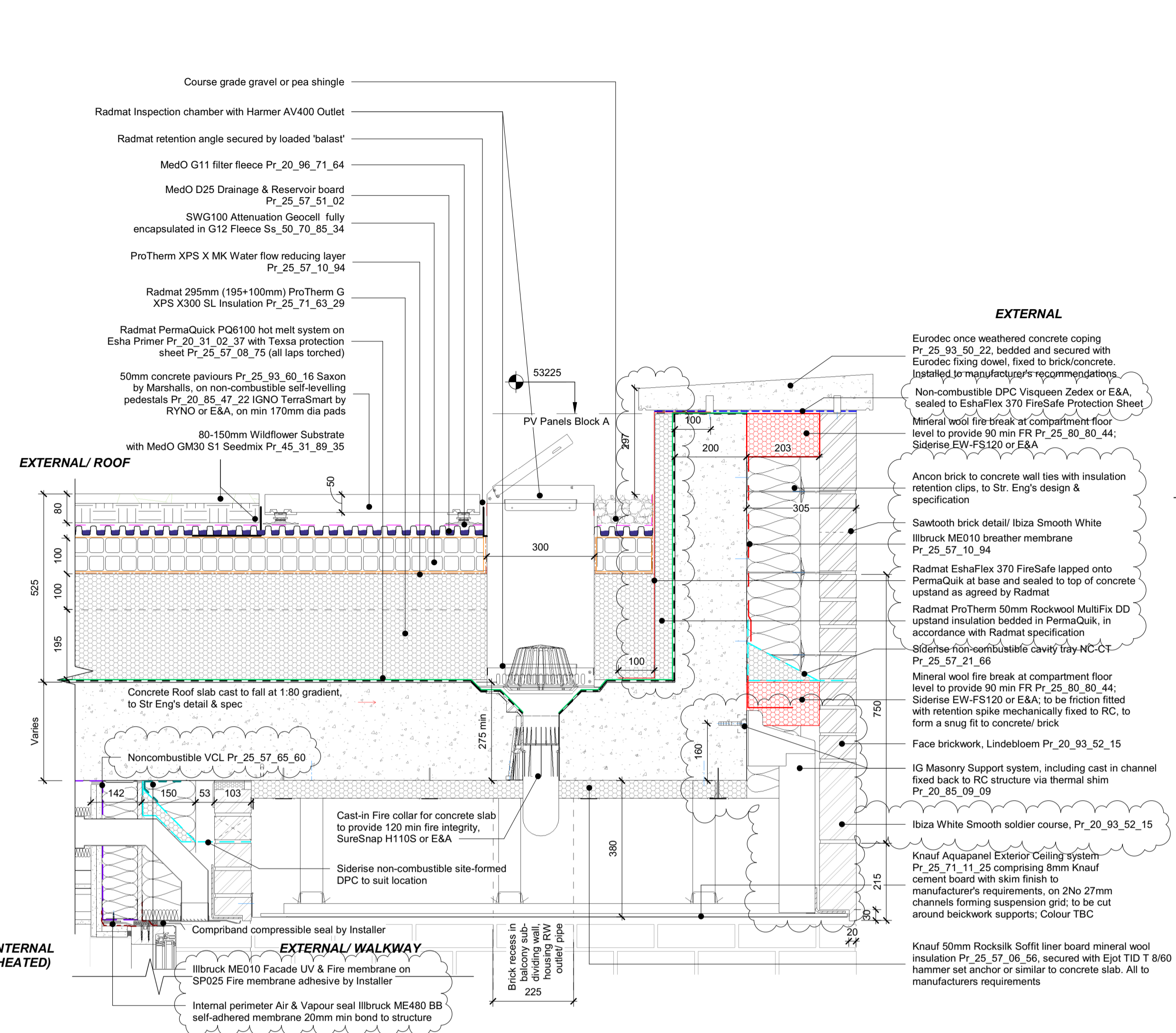
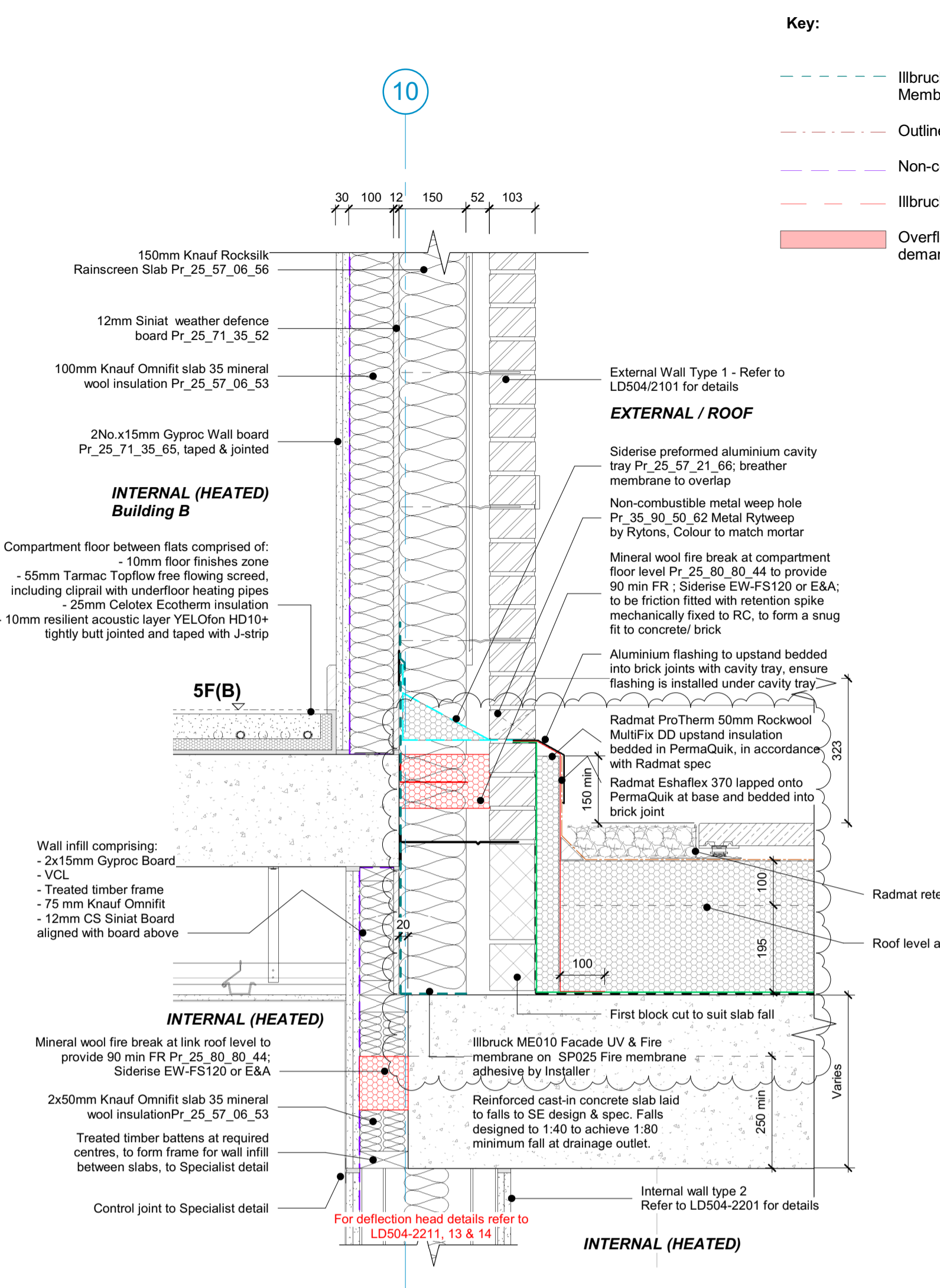


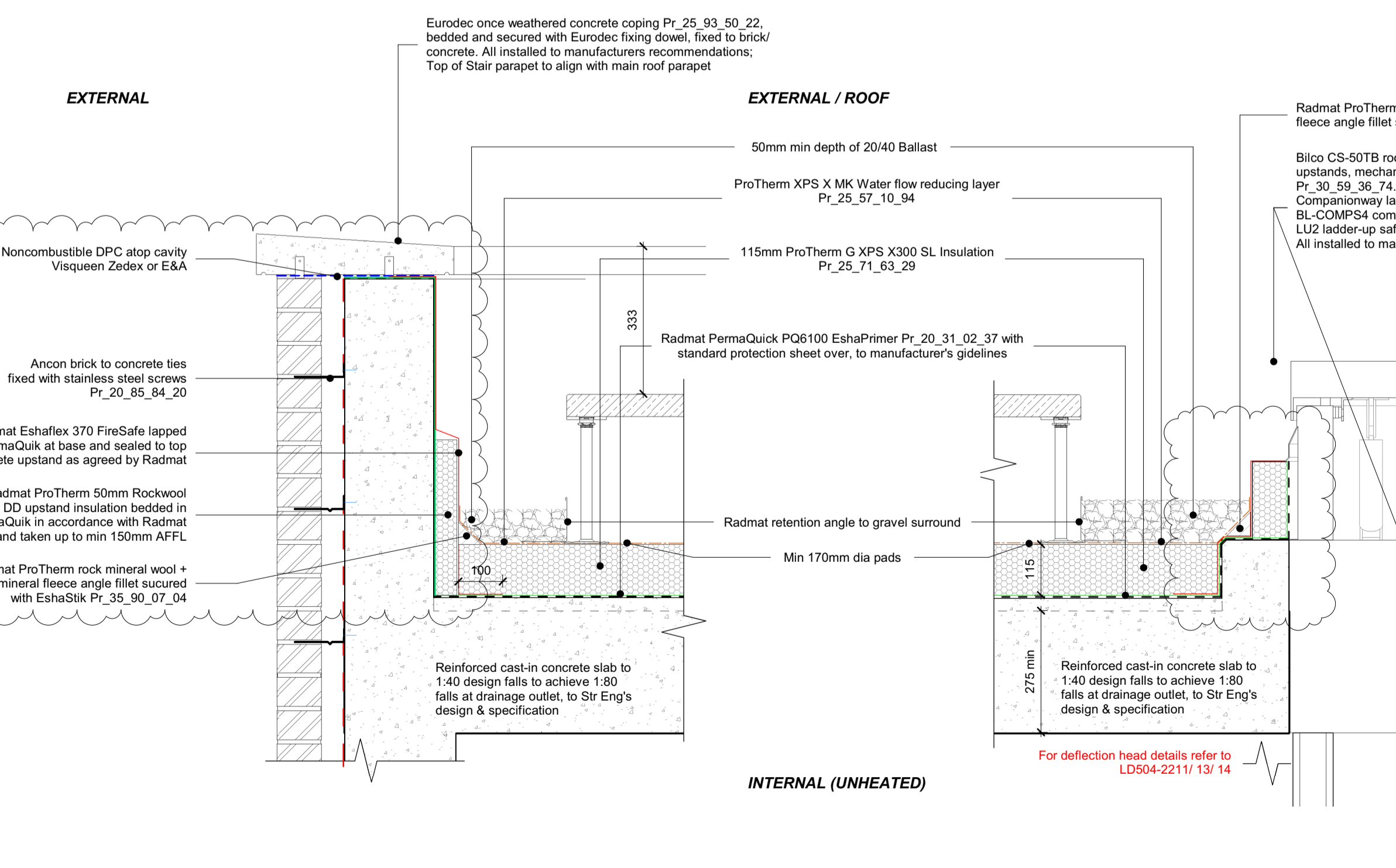
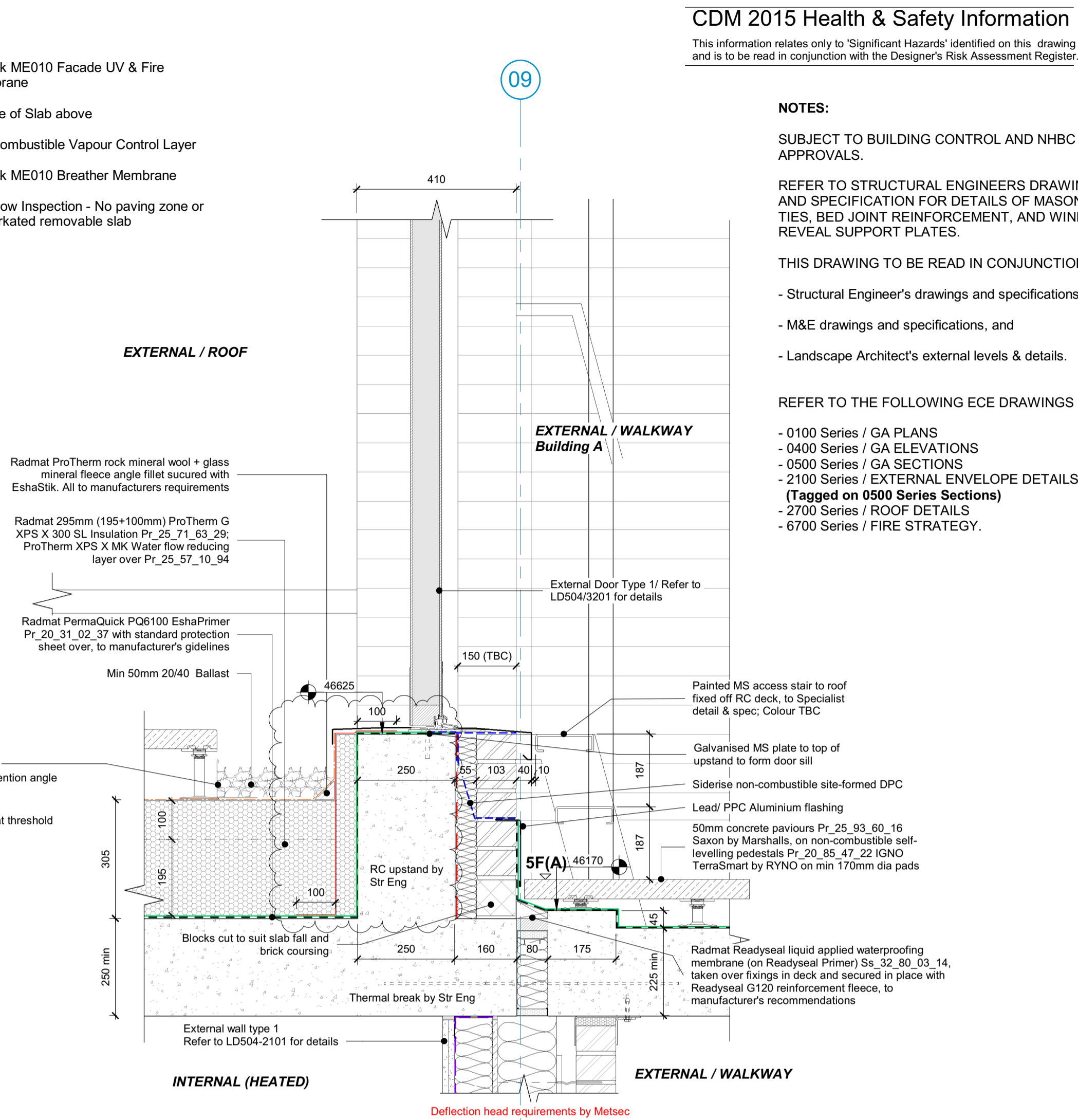
NOTES:
 SUBJECT TO BUILDING CONTROL AND NHBC APPROVALS.
 REFER TO STRUCTURAL ENGINEERS DRAWINGS AND SPECIFICATION FOR DETAILS OF MASONRY TIES, BED JOINT REINFORCEMENT, AND WINDOW REVEAL SUPPORT PLATES.
 THIS DRAWING TO BE READ IN CONJUNCTION WITH:
 - Structural Engineer's drawings and specifications
 - M&E drawings and specifications, and
 - Landscape Architect's external levels & details.
 REFER TO THE FOLLOWING ECE DRAWINGS FOR:
 - 0100 Series / GA PLANS
 - 0400 Series / GA ELEVATIONS
 - 0500 Series / GA SECTIONS
 - 2100 Series / EXTERNAL ENVELOPE DETAILS (Tagged on 0500 Series Sections)
 - 2700 Series / ROOF DETAILS
 - 6700 Series / FIRE STRATEGY.



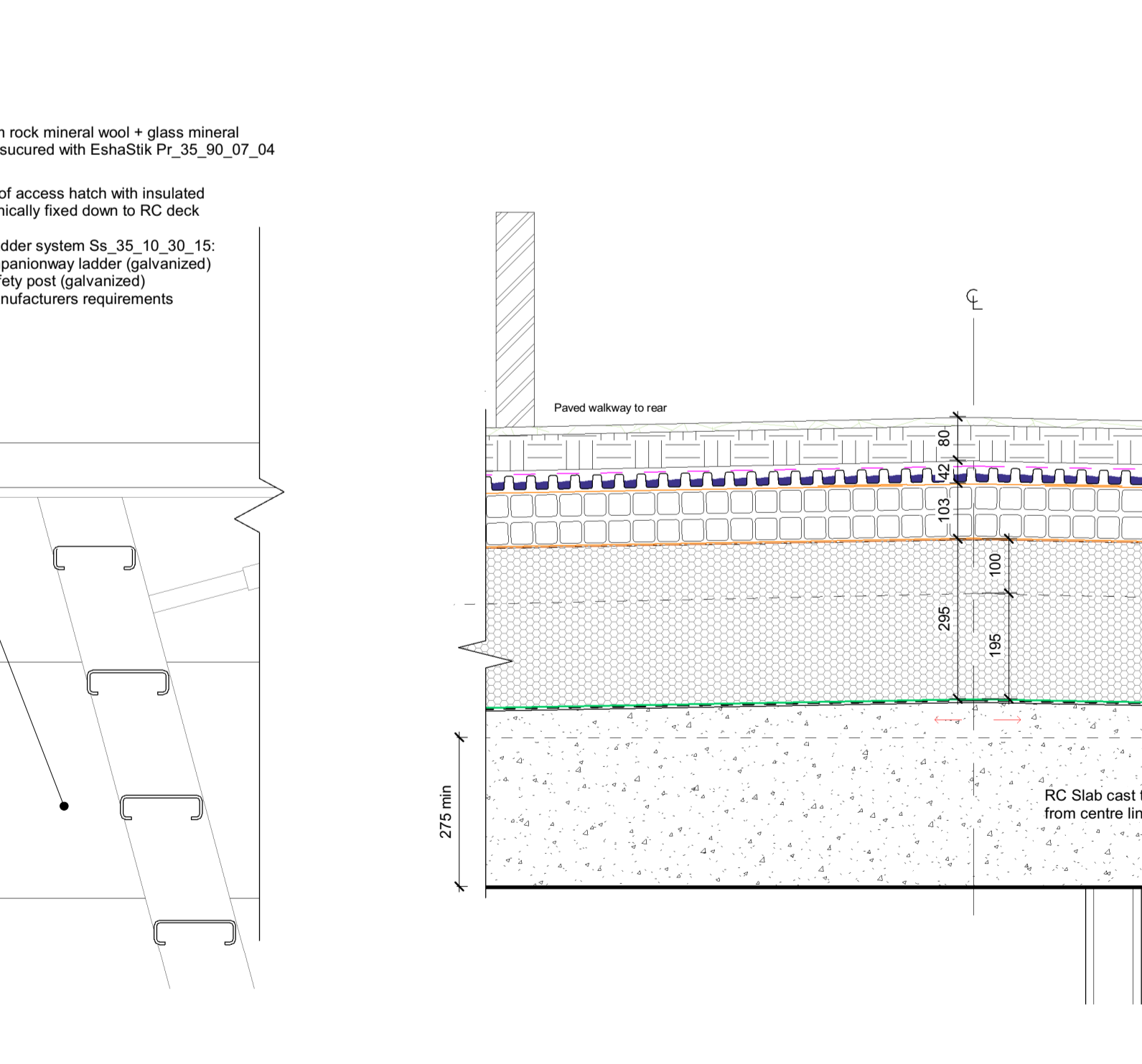
1 Block A Parapet to Balcony Soffit
 1 : 10



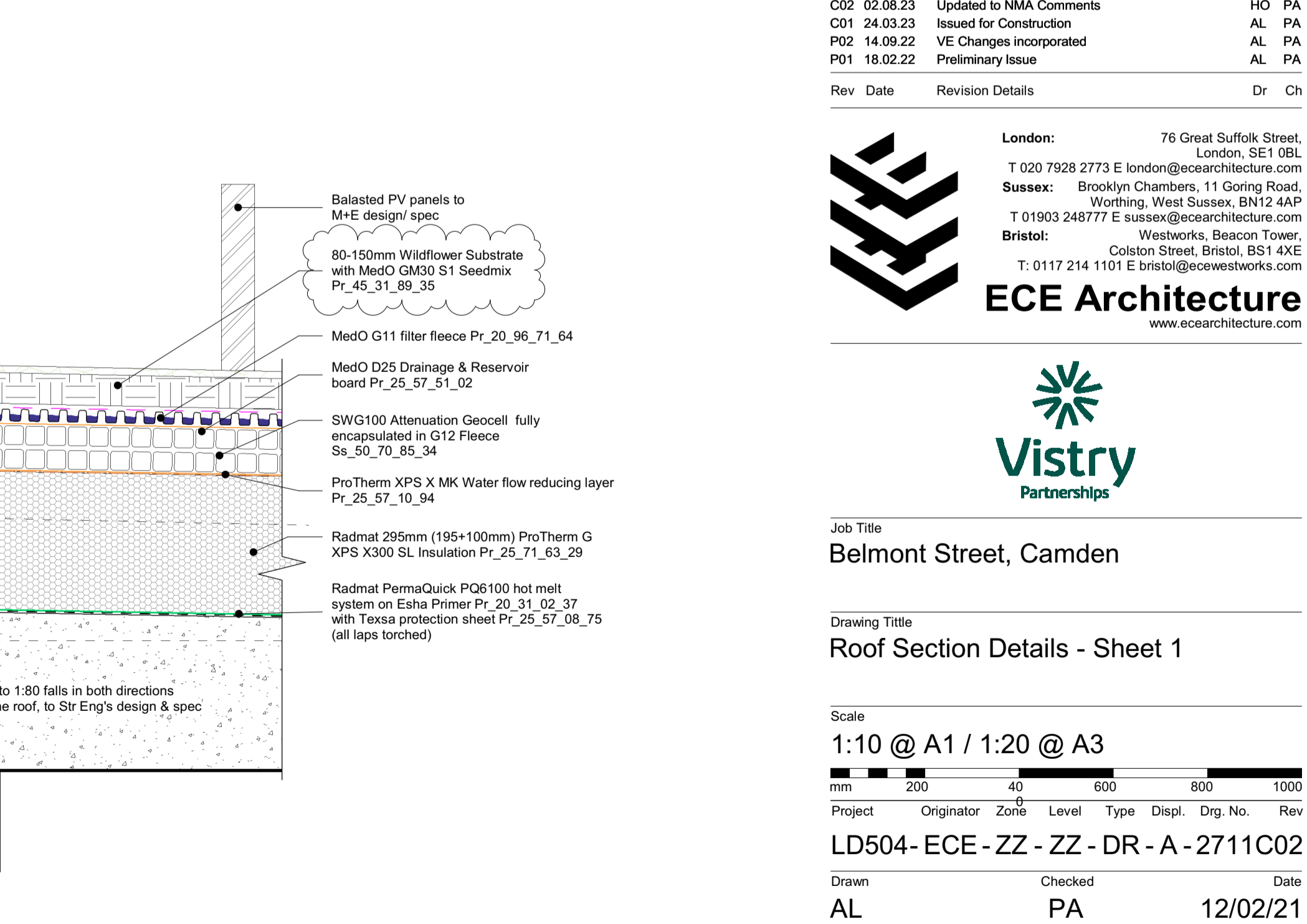
2 A&B Roof Link - Abutment & Threshold
 1 : 10



3 External Stair - Roof Parapet
 1 : 10



4 External Stair - Roof Access
 1 : 10



5 Blue Green Roof Build-up - Block A with PV Panels
 1 : 10

Rev	Date	Revision Details	Dr	Ch
C02	02.08.23	Updated to NMA Comments	HO	PA
C01	24.03.23	Issued for Construction	AL	PA
P02	14.09.22	VE Changes incorporated	AL	PA
P01	18.02.22	Preliminary issue	AL	PA

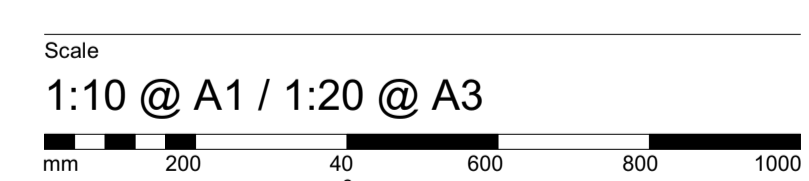
ECE Architecture
 www.ecearchitecture.com

London: 76 Great Suffolk Street, London, SE1 0BL
 T 020 7928 2773 E london@ecearchitecture.com
 Sussex: Brooklyn Chambers, 11 Goring Road, Worthing, West Sussex, BN12 4AP
 T 01903 248777 E sussex@ecearchitecture.com
 Bristol: Westworks, Beacon Tower, Colston Street, Bristol, BS1 4XE
 T 0117 214 1101 E bristol@ecwestworks.com

Vistry Partnerships

Job Title
Belmont Street, Camden

Drawing Title
Roof Section Details - Sheet 1



Project	Originator	Zone	Level	Type	Displ.	Drng. No.	Rev
LD504- ECE - ZZ - ZZ - DR - A - 2711C02							

Drawn	Checked	Date
AL	PA	12/02/21

Status
S5 - Construction