

Registered as an Architect under the  
Architect Act 1997



Company n. 11868709 & its office registered in England & Wales

Don't scale for building control or construction purpose, may be scaled for planning purpose. Any variation or supplementary drawings are to be approved by the Architect. Ownership & Copyright of the drawings belongs to ASP Architects London Ltd

#### Annotations:

- 1- The current drawing is exclusively for planning permission application
- 2- Measurement units is mm
- 3-Don't use this drawing for construction purpose
- 4-The drawing is copyright to ASP Architects London ltd

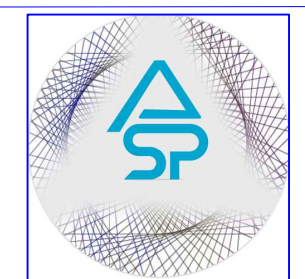
Issue for Full Planning Permission Consent	10/08/2023	0
Description	Date	Rev.

### CLIENT

**DOW PROPERTIES LTD**  
195 Hale Lane  
Edgware-London HA8 9QN

### LOCAL AUTHORITY

**Camden London Borough Council**



#### ASP ARCHITECTS LONDON LTD

Alshajrawi Sami Projects  
203-205 The Vale Business Centre-Office n.39  
LONDON W3 7QS - ENGLAND  
E-Mail:info@asparchitects.co.uk  
www.asparchitects.co.uk  
Tel. N.: +44 02030341350

#### PROJECT:

**New Kitchen Area-Bakery Activity**  
**Ventilation System & Extra Flue Duct at Rear-**  
**76 Neal Street - Covent Garden WC2H 9PA**

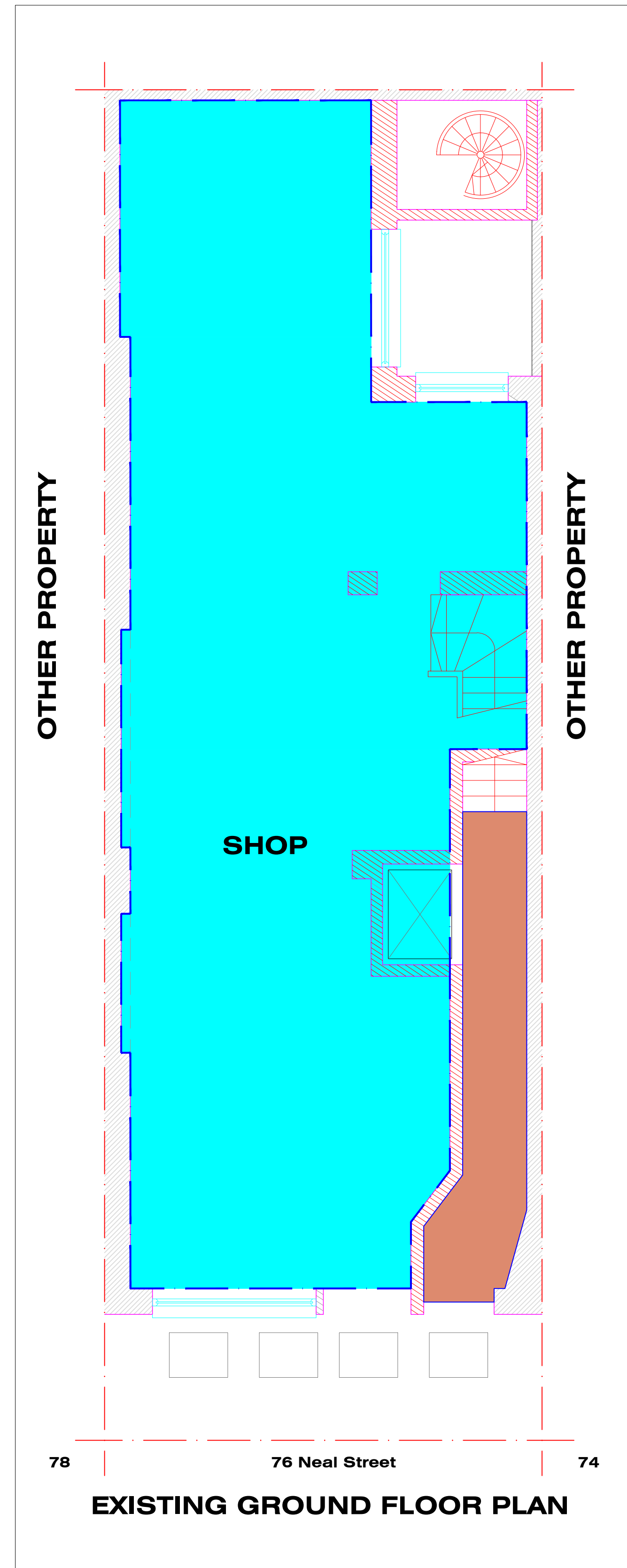
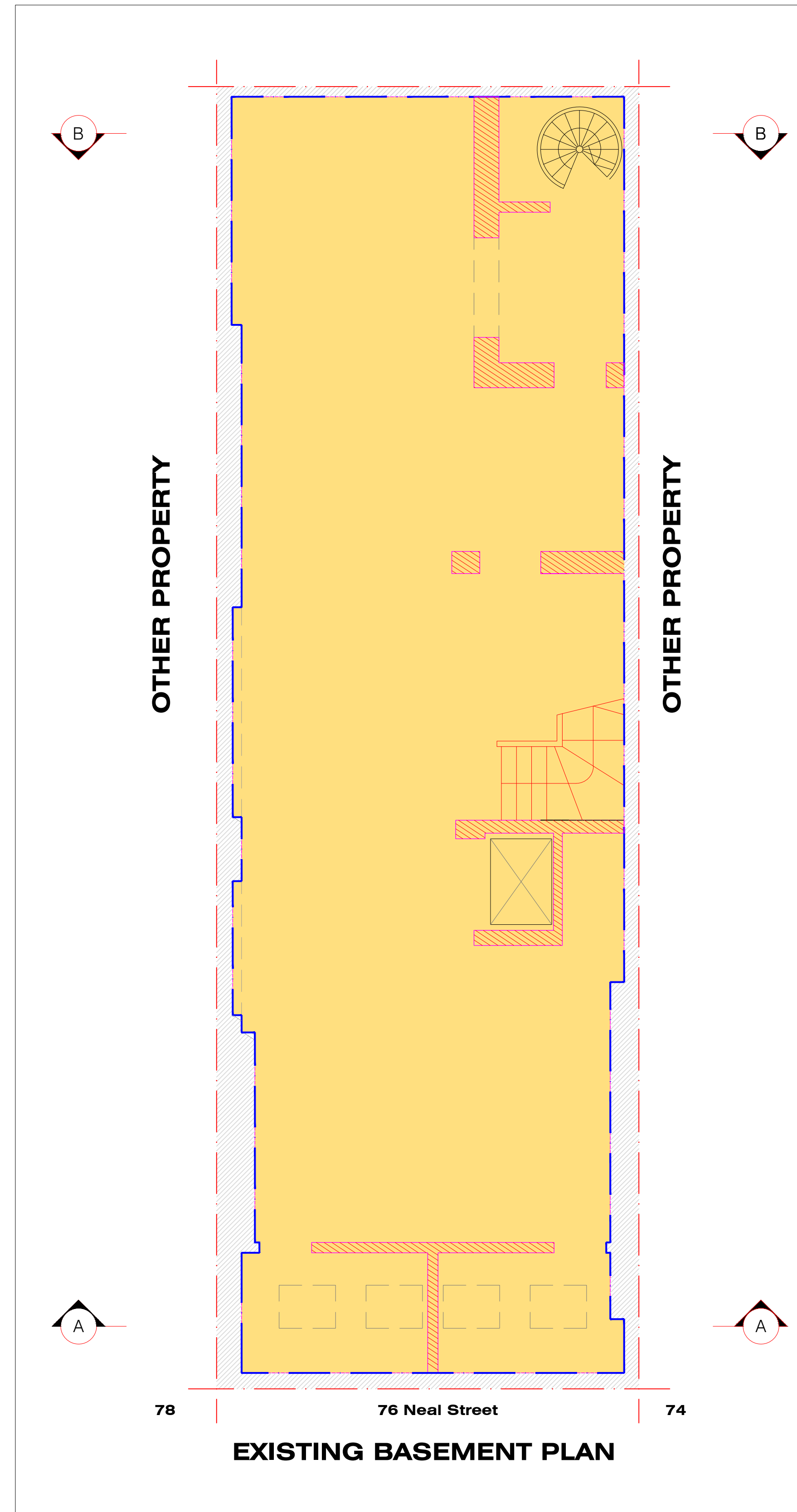
**TITLE: Layout**  
**Existing Basement**  
**& Ground Floor**





Drawn By <b>Sami A.</b>	Checked By <b>ASP</b>	Approved By <b>A.I.</b>
----------------------------	--------------------------	----------------------------

Scale <b>1:50@A1</b>	Date <b>10/08/2023</b>
-------------------------	---------------------------

Project Code <b>ASP-23104</b>	Drawing No. <b>P100</b>	Revision <b>0</b>
----------------------------------	----------------------------	----------------------

ASP-23104\_76 NS\_P100\_Layout existing Basement & GF\_10/08/23\_REV.0



-  **Shop Area (Basement)**  
G.I.A.=103.45 sqm  
Class Use "E"
-  **Shop Area (G.Floor)**  
G.I.A.=76.24 sqm  
Class Use "E"
-  **Access to the upper floors**  
Class Use "C3"
-  **Shop Property**

