

General Arrangement Notes

Not in scope

Area in scope

Area not surveyed

0 1 2 3 4 5 10m

This document and its design content is © John Robertson Architects Ltd. It shall be read in conjunction with all other associated project information including models, specifications, schedules and related consultants documents. Do not scale from documents. All dimensions to be checked on site. Immediately report any discrepancies, errors or omissions on this document to the Originator. If in doubt ASK.

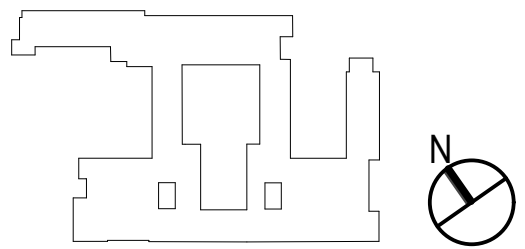
Source File: BIMcloud: STBEM23 - BIMcloud: Bema for ArchiCAD 251958 BMA House1998-JRA-02-02-M5-A-0001_BMA House Team Model_WORKSTREAME2

Rev	Date	Dwn	Chk	Description
P01	02/02/2023	PP	LM	For Information
P02	24/07/2023	PP	LM	For Planning
P03	01/09/2023	PP	LM	For Planning

Rev	Date	Dwn	Chk	Description
-----	------	-----	-----	-------------

Rev	Date	Dwn	Chk	Description
-----	------	-----	-----	-------------

KEY PLAN / NORTH SYMBOL



JRA
John Robertson Architects
111 Southwark Street,
London, SE1 1UF
02076335100
www.jra.co.uk
enquiries@jra.co.uk

Project
Tavistock House
London
Client
British Medical
Association
BMA House, Tavistock Square London
WC1H 9LP
0200 123 1233
lbesch@bma.org.uk

Drawing Title
Block F - Existing Fifth Floor Plan
(Attic)
Scale 1:100 @ A0 Internal Project No. 1998
Dwg No. 1998-JRA-02-05-DR-A-0065
Suitability WORK IN PROGRESS S0
Revision PRELIMINARY P03