

General Arrangement Notes

Not in scope

Area in scope

Area not surveyed

Note: Refer to Block E Planning and LBC Application for L4 Block E

0 1 2 3 4 5 10m

This document and its design content is © John Robertson Architects Ltd. It shall be read in conjunction with all other associated project information including models, specifications, schedules and related consultants documents. Do not scale from documents. All dimensions to be checked on site. Immediately report any discrepancies, errors or omissions on this document to the Originator. If in doubt ASK.

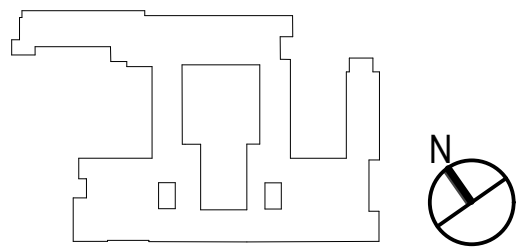
Source File: BIMcloud: STSBIM23 - BIMcloud Base for Archcad 2319198 BMA House1998-JRA-02-02-M5A-0001\_BMA House Team Model\_WORKSTREAM2

Rev	Date	Dwn	Chk	Description
P01	02/02/2023	PP	LM	For Information
P02	24/07/2023	PP	LM	For Information
P03	01/08/2023	PP	LM	For Planning

Rev	Date	Dwn	Chk	Description
-----	------	-----	-----	-------------

Rev	Date	Dwn	Chk	Description
-----	------	-----	-----	-------------

KEY PLAN / NORTH SYMBOL



**JRA**  
John Robertson Architects  
111 Southwark Street,  
London, SE1 1UF  
02076335100  
www.jra.co.uk  
enquiries@jra.co.uk

Project  
Tavistock House  
London  
Client  
British Medical  
Association  
BMA House, Tavistock Square London  
WC1H 9LP  
0300 123 1233  
lbesch@bma.org.uk

Drawing Title  
Block F & G - Existing Fourth Floor  
Plan  
Scale 1:100 @ A0 Internal Project No. 1998  
Dwg No. 1998-JRA-02-04-DR-A-0064  
Suitability WORK IN PROGRESS S0  
Revision PRELIMINARY P03