

THIS DRAWING IS THE PROPERTY OF SHOPFRONT SERVICES SOUTHERN LTD, AND MUST NOT BE COPIED OR REPRODUCED EXCEPT WITH THEIR EXPRESS PERMISSION, NOR MAY THE DESIGN OR ANY INFORMATION SHOWN THEREON BE DISCLOSED TO ANY THIRD PARTY. WE WILL NOT BE RESPONSIBLE FOR OTHER CONTRACTUAL DIMENSIONS.

© THIS DRAWING IS COPYRIGHT

NOTES:

Frame:  
Smart shopline non-thermally broken aluminium profiles, 100mm x 50mm sections.  
Comar non-thermally broken aluminium profiles, 64mm x 45mm sections.

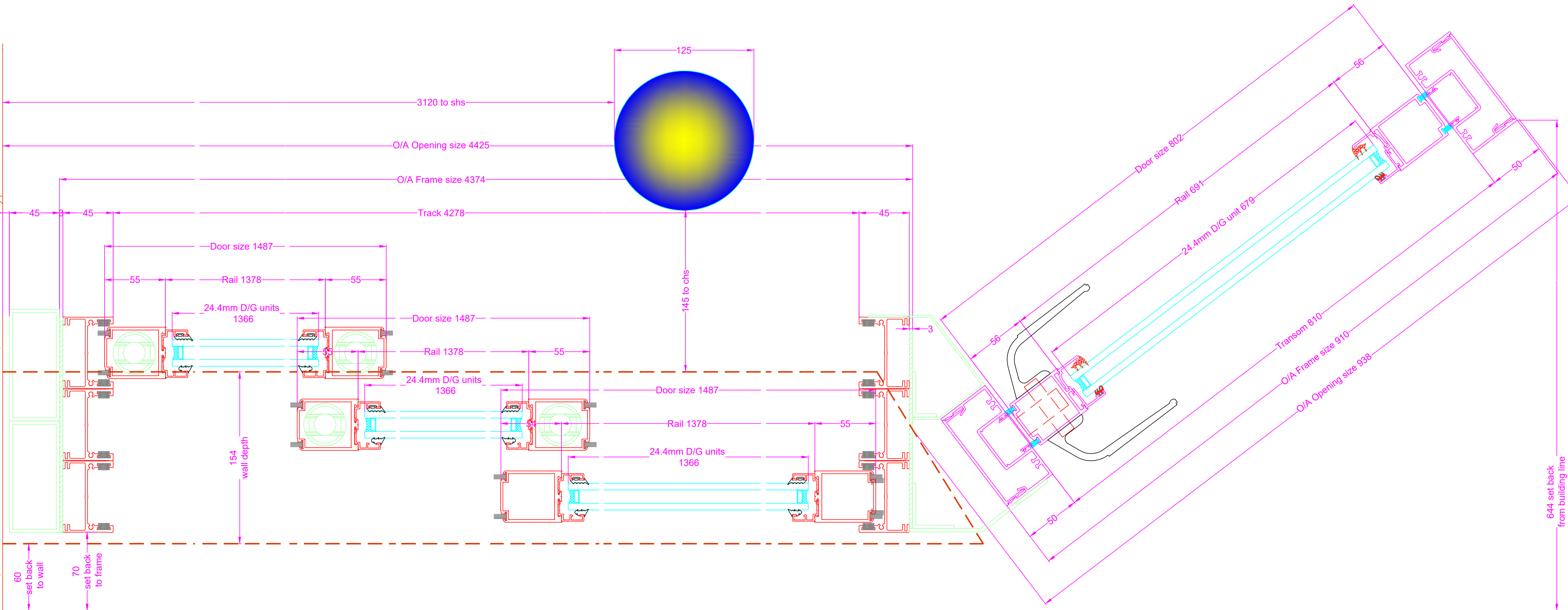
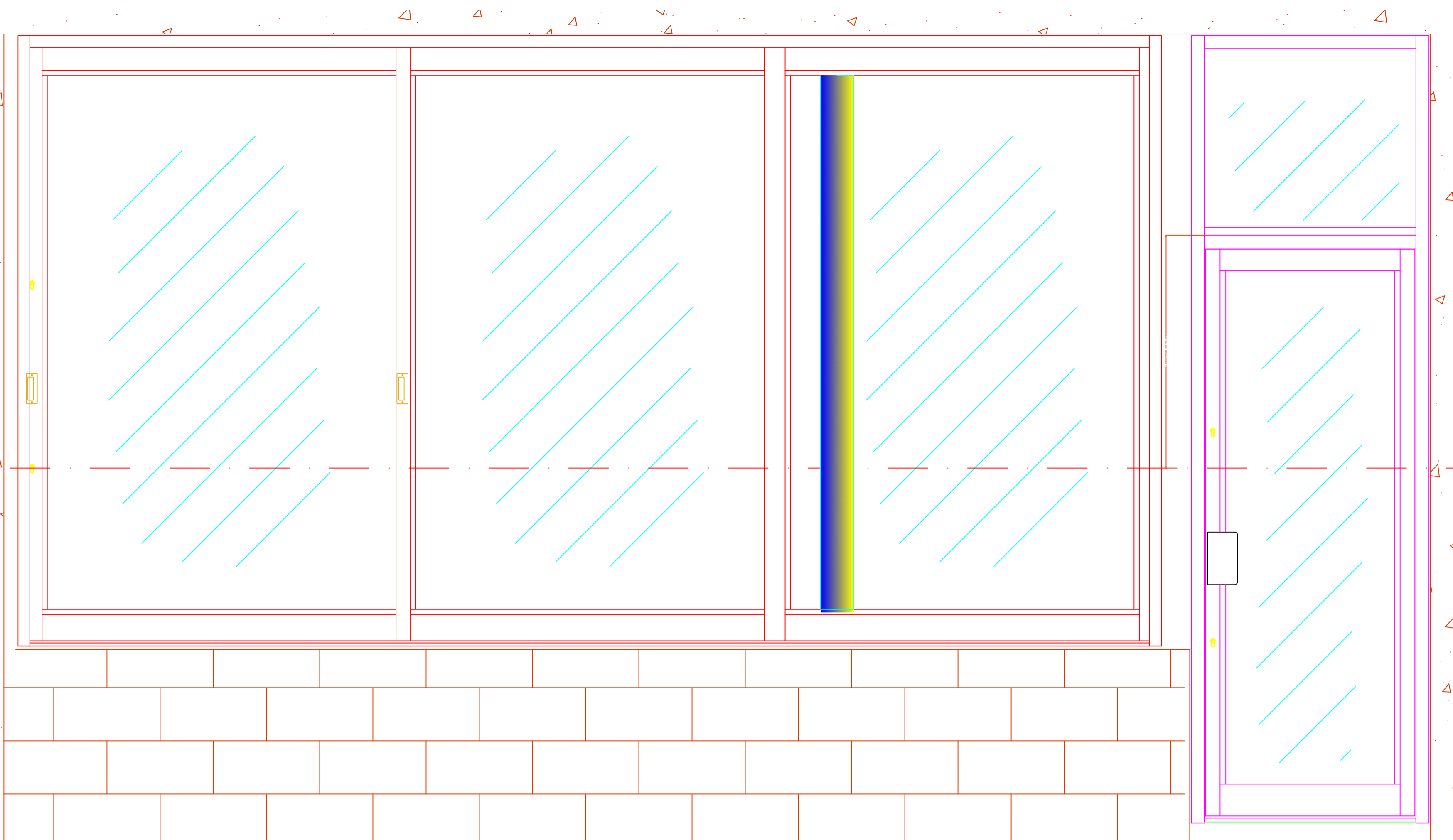
Doors:  
Smart shopline non-thermally broken aluminium profile sections.  
Stile 56mm  
Top rail 82mm  
Bottom rail 122mm

Comar non-thermally broken aluminium profile sections.  
Stiles 80mm  
Top rail 100mm  
Bottom rail 150mm

Ironmongery:  
Bottom pivots  
Axim transom closer  
MS2200 locks  
Flush bolts  
PAD handle  
Flush pull handle

Finish:  
Polyester powder coated in RAL 9005 matt

Glazing:  
24.4mm double glazed unit  
6.4mm laminate/12mm argon/6mm toughened



PROJECT: ENDELL STREET

TITLE: ENTRANCE DOOR AND STRAIGHT SLIDING WINDOWS ELEVATION PLAN

SITE ADDRESS: 20 ENDELL STREET LONDON WC2H 9BD

JOB No. 9615 CLIENT: MGL

SCALE: 1:2 DWG SHEET: A1

DWG No. 9615\_200 REV: \*

DRAWN BY: RP DATE: 24/05/2023

APPROVED BY: \*\*\* DATE: \*\*/\*\*\*\*

**SHOPFRONTservices**  
SOUTHERN LTD

Victoria Industrial Park  
Unit 5  
Victoria Road  
Dartford  
Kent  
DA1 5AJ

Tel: 01322 292614 Fax: 01322 289952