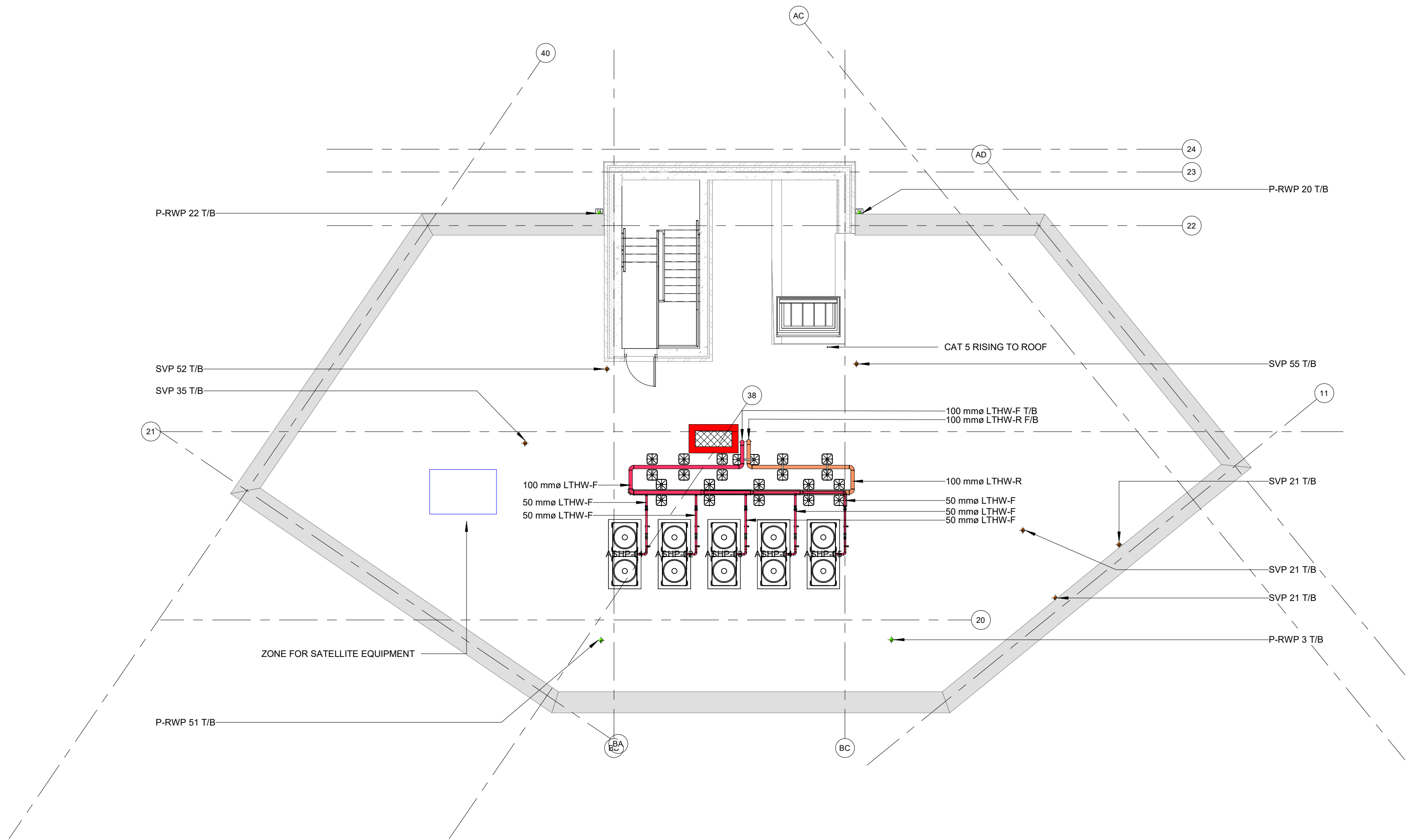


1 10 Roof B Combined Service
1 : 100



NOTES:

- DO NOT SCALE.
- THIS DRAWING TO BE READ IN CONJUNCTION WITH ALL OTHER ARCHITECTS, STRUCTURAL ENGINEERS AND BUILDING SERVICES, ENGINEERS' DRAWINGS, SPECIFICATIONS AND SCHEDULES.
- ALL DIMENSIONS IN MILLIMETERS.
- ALL FINAL SETTING OUT TO BE BY ARCHITECT.
- FOR CLARITY ON ALL PIPE SIZES PLEASE REFER TO THE ENERGY CENTRE SCHEMATIC.
- THE ASHP LTHW SUPPLY IS ROUTED IN A DEDICATED RISER FROM THE SECONDARY PIPEWORK.
- ALL LTHW PIPEWORK ON THE ROOF IS TO BE INSULATED WITH ENHANCED THICKNESSES AND TRACED HEATED.
- AN ACOUSTIC CONSULTANT (ONCE APPOINTED) IS TO FULLY REVIEW SOUND LEVELS TO DETERMINE WHETHER AN ACOUSTIC BASED ENCLOSURE IS REQUIRED AROUND THE ASHP EQUIPMENT.
- AAV'S ARE TO BE PLACED AT THE HIGHEST POINT OF PIPEWORK ON THE ROOF LOCATED IN AN ACCESSIBLE LOCATION FOR MAINTENANCE.
- ALL ASHP'S ARE TO BE MOUNTED ON ANTI-VIBRATION MOUNTS.
- ALL AHSP'S ARE TO BE POWERED LOCALLY FROM AN EXTERNAL MCC. THIS MCC IS TO BE IP RATED AND LOCATED EXTERNALLY. THE ENCLOSURE DEPENDING ON CABLE LENGTHS MAY ALSO HOUSE THE MASTER CONTROLLERS FOR EACH UNIT AND THE MASTER CONTROLLER FOR THE MITSUBISHI NETWORK. THE BMS IS NOT TO POWER THE ASHP'S BUT IS TO BE LINKED VIA CONTROL CABLING FROM THE ENERGY CENTRE MAIN PANEL.

LTHW SERVICES NOTES :

- DRAIN POINTS TO BE FITTED TO ALL LOW POINTS & ALL HIGH POINTS WILL BE FITTED WITH AIR VENTS.
- ALL PIPEWORK IS TO BE PRESSURE TESTED PRIOR TO BEING CONCEALED.
- ALL PIPEWORK EXTERNALLY IS TO BE TRACED HEATED.
- ALL LTHW HTO PIPEWORK TO BE INSULATED WITH ENHANCED THICKNESS FOIL FACED PHENOLIC RISER INSULATION. THE THICKNESS OF INSULATION IS TO BE PREAPRED BY THE MECHANICAL CONTRACTOR'S INSULATION PROVIDER DEMONSTRATING COMPLIANCE WITH THE BUILDING REGULATIONS ON MAXIMUM PERMISSIBLE HEAT LOSS PER METER OF PIPE AGAINST THE EXTERNAL TEMPERATURE CONDITIONS OF WHERE THE PIPEWORK IS LOCATED (INTERNAL / EXTERNAL).
- LTHW SERVICES PIPEWORK SPECIFICATION TO BE AS FOLLOWS:
- MEDIUM GRADE STEEL.
- FOR CLARITY ON ALL PIPE SIZES PLEASE REFER SCHEMATICS DRAWING.

LEGEND:

- EXHAUST AIR DUCT WITH INSULATION
- EXTRACT AIR DUCT
- SUPPLY AIR DUCT
- FRESH AIR INTAKE DUCT
- BOILER EXHAUST DUCT
- GAS PIPE
- LOW TEMPERATURE HOT WATER FLOW
- LOW TEMPERATURE HOT WATER RETURN
- BOOSTED COLD WATER SERVICES
- COLD WATER SUPPLY
- ELV CABLE TRAY
- LV CABLE TRAY
- FIRE ALARM TRAY
- SUB MAINS TRAY

- IV ISOLATION VALVE
- DOC DRAIN-OFF COCK
- NRV NON RETURN VALVE
- DCV DOUBLE CHECK VALVE
- STR STRAINER
- FC FLEX CONNECTION
- PRV PRESSURE RELIEF VALVE
- CS COMMISSIONING VALVE
- HW HEAT METER
- WM WATER METER
- CV CONTROL VALVE
- MCV MODULATING CONTROL VALVE
- PRV PRESSURE REDUCER VALVE
- AAV AUTOMATIC AIR VENT
- SV SECURITY VALVE
- LSV LOCK SHIELD VALVE
- PU PRESSURISATION UNIT
- TP TEST POINT
- T TEMPERATURE GAUGE
- P PRESSURE VALVE
- TS TEMPERATURE SENSOR
- FM FLOW METERING SENSOR

- F/A FROM ABOVE
- F/B FROM BELOW
- T/A TO ABOVE
- F/A FROM ABOVE

T01	16.03.2022	ISSUED FOR TENDER	AB	AT
Rev	Date	Description	Orig	App

Client

Vistry
Partnerships

Name of
Job

BELMONT STREET

Title of Drawing
BLOCK B - COMBINED ROOF SERVICE

Drawing No: LD504-L21011-EDC-B-XX-DR-M-58-2303

Scale @ A1	Model Manager	Project Manager
As indicated	Author	Approver

EDC Mechanical & Electrical Consulting Engineers

Cork Office
Tel: +353 (0)21 4280476, email: info@edcengineers.com

Dublin Office
Tel: +353 (0)1 5313693, email: info@edcengineers.com

London Office
Tel: +44 (0)203 3040062, email: info@edcengineers.com

www.edcengineers.com