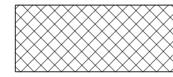


Original, historic property area.



Proposed extension

Adjacent property

Reduction in size

Boundary wall

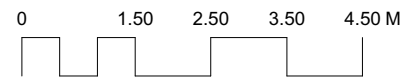
Boundary wall

Garden owned by upper floor flat

Boundary wall

Boundary wall

Adjacent property



Rev B- Extension reduced 25% from bay
Rev A- Omit basement

Scale
NTS
Drawn by
DB

Drawing no.
00.001
Date
December 2022

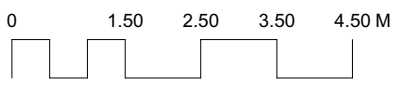
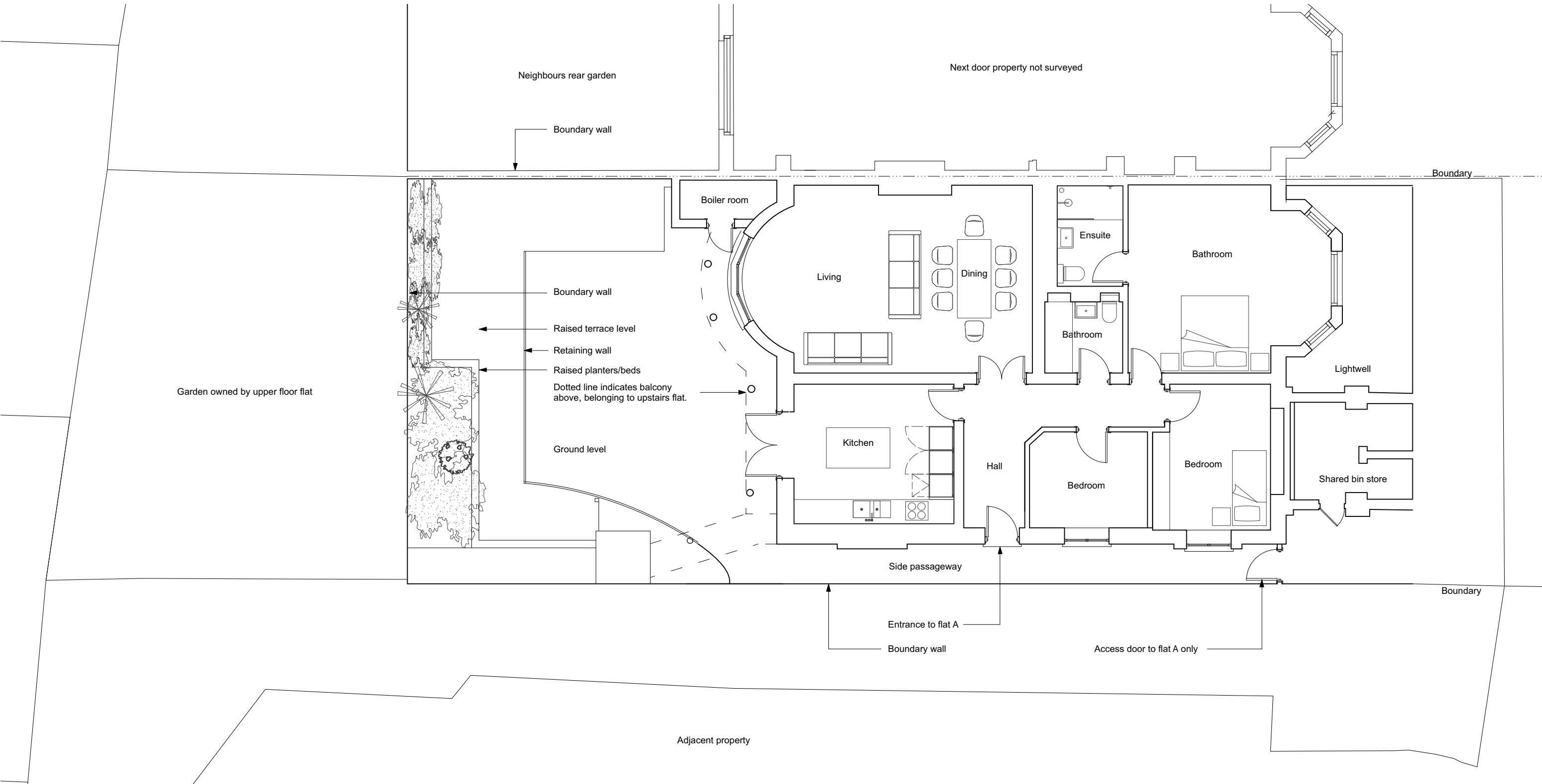
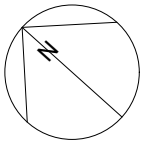
Client

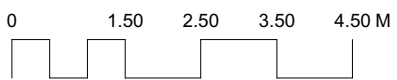
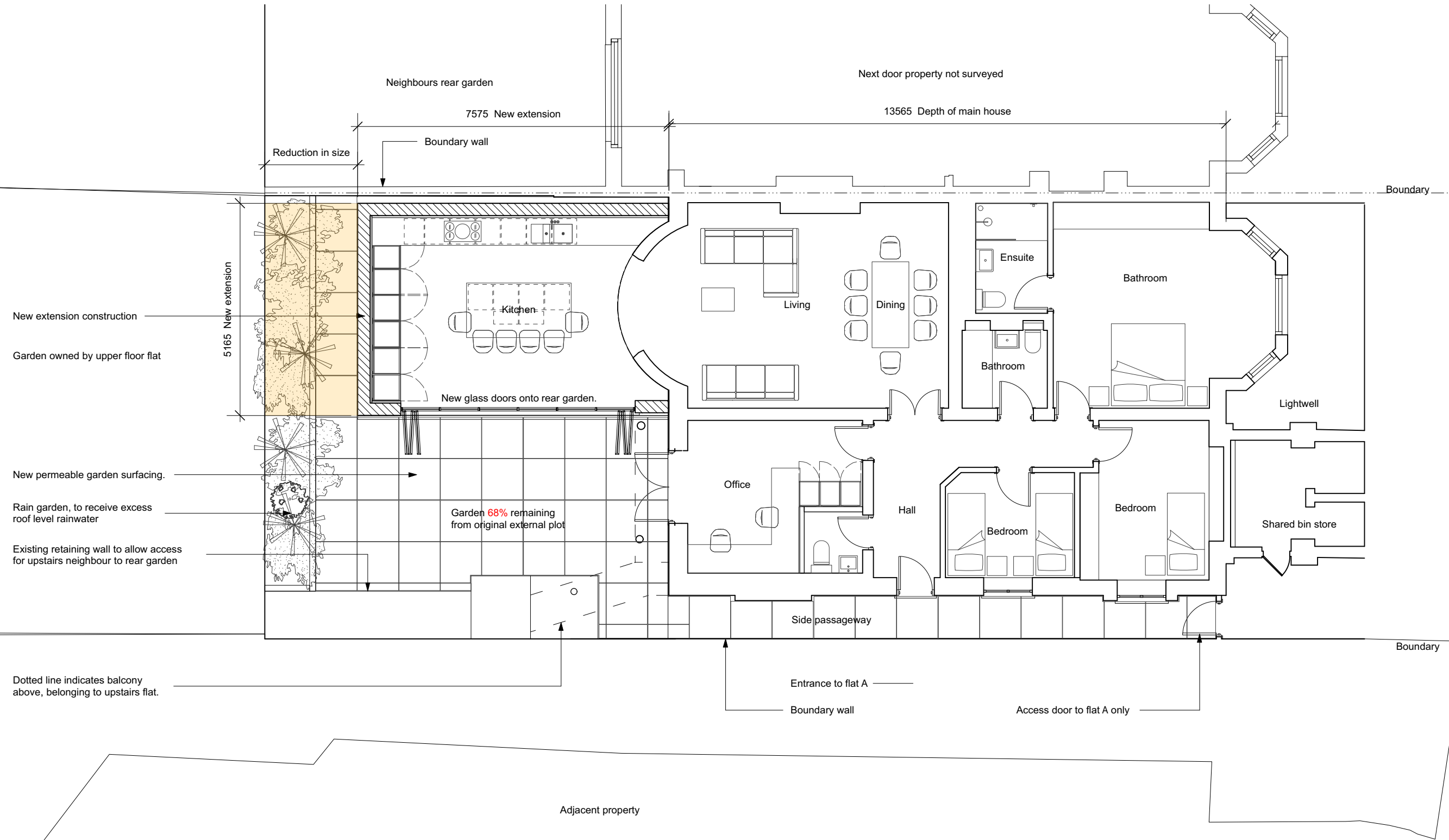
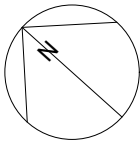
Project
1a Adamson Road, London NW3 3HX

Drawing title
Historic Property Boundary
Planning

Easton Design Office Limited
Second Floor
23-24 Easton Street
London WC1X 0DS
+44 (0) 207 043 4614
eastondesignoffice.com







Rev B- Extension reduced 25% from bay
Rev A- Omit basement

Scale
1:66 AT A3
Drawn by
DB

Drawing no.
00.101
Date
December 2022

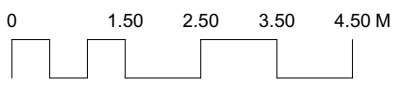
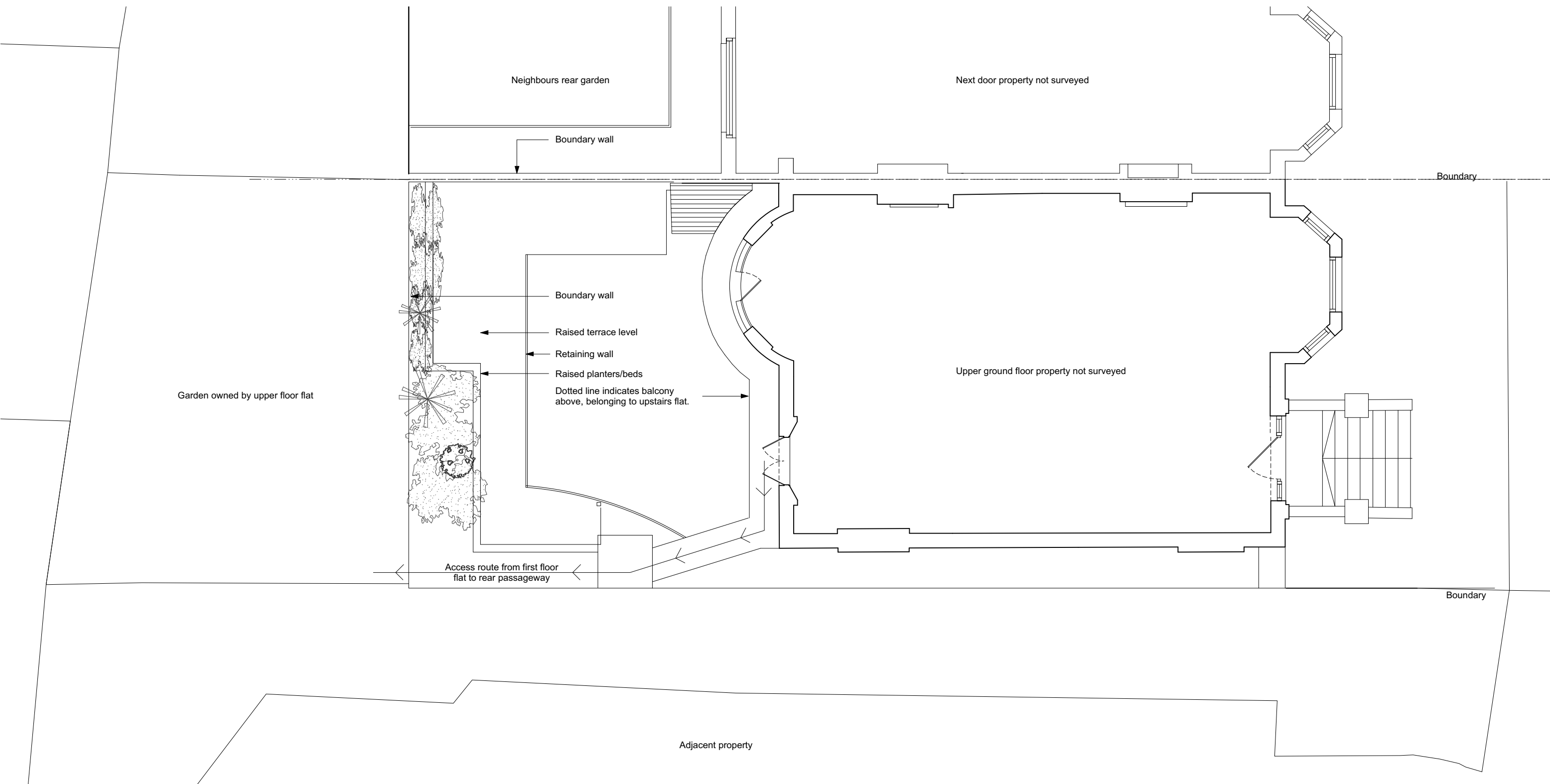
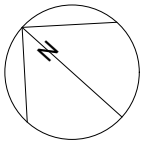
Client

Project
1a Adamson Road, London NW3 3HX

Drawing title
Proposed Ground Floor Plan
Planning

Easton Design Office Limited
Second Floor
23-24 Easton Street
London WC1X 0DS
+44 (0) 207 043 4614
eastondesignoffice.com





Scale
NTS
Drawn by
DB

Drawing no.
01.100
Date
December 2022

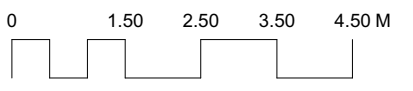
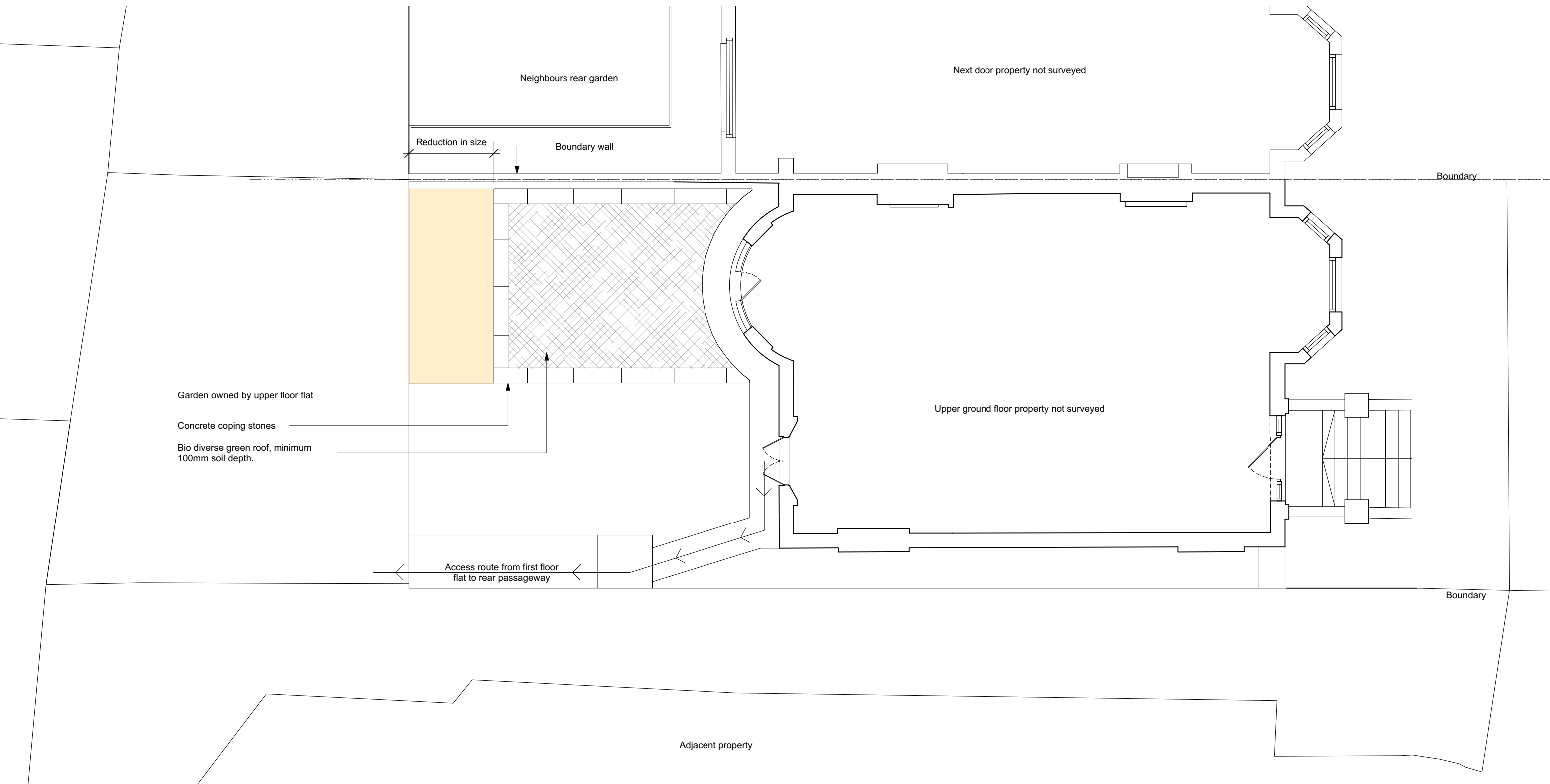
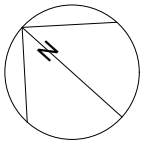
Client

Project
1a Adamson Road, London NW3 3HX

Drawing title
Existing Upper Ground Plan
Planning

Easton Design Office Limited
Second Floor
23-24 Easton Street
London WC1X 0DS
+44 (0) 207 043 4614
eastondesignoffice.com





Rev B- Extension reduced 25% from bay
Rev A- Omit basement

Scale
NTS
Drawn by
DB

Drawing no.
01.101
Date
December 2022

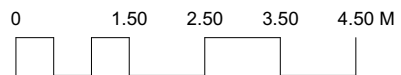
Client

Project
1a Adamson Road, London NW3 3HX

Drawing title
Proposed Upper Ground Plan
Planning

Easton Design Office Limited
Second Floor
23-24 Easton Street
London WC1X 0DS
+44 (0) 207 043 4614
eastondesignoffice.com





Scale
1:100 @ A3
Drawn by
DB

Drawing no.
201
Date
December 2022

Client

Project
1a Adamson Road, London NW3 3HX

Drawing title
Existing Rear Elevation

Planning

Easton Design Office Limited
Second Floor
23-24 Easton Street
London WC1X 0DS
+44 (0) 207 043 4614
eastondesignoffice.com





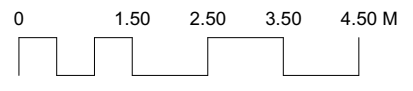
Green roof

Estimated property boundary

New bi-fold doors

3529 Approx height of boundary wall

Boundary



Rev B- Extension reduced 25% from bay
Rev A- Omit basement

Scale
1:100 @ A3
Drawn by
DB

Drawing no.
202
Date
December 2022

Client

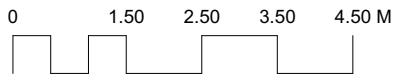
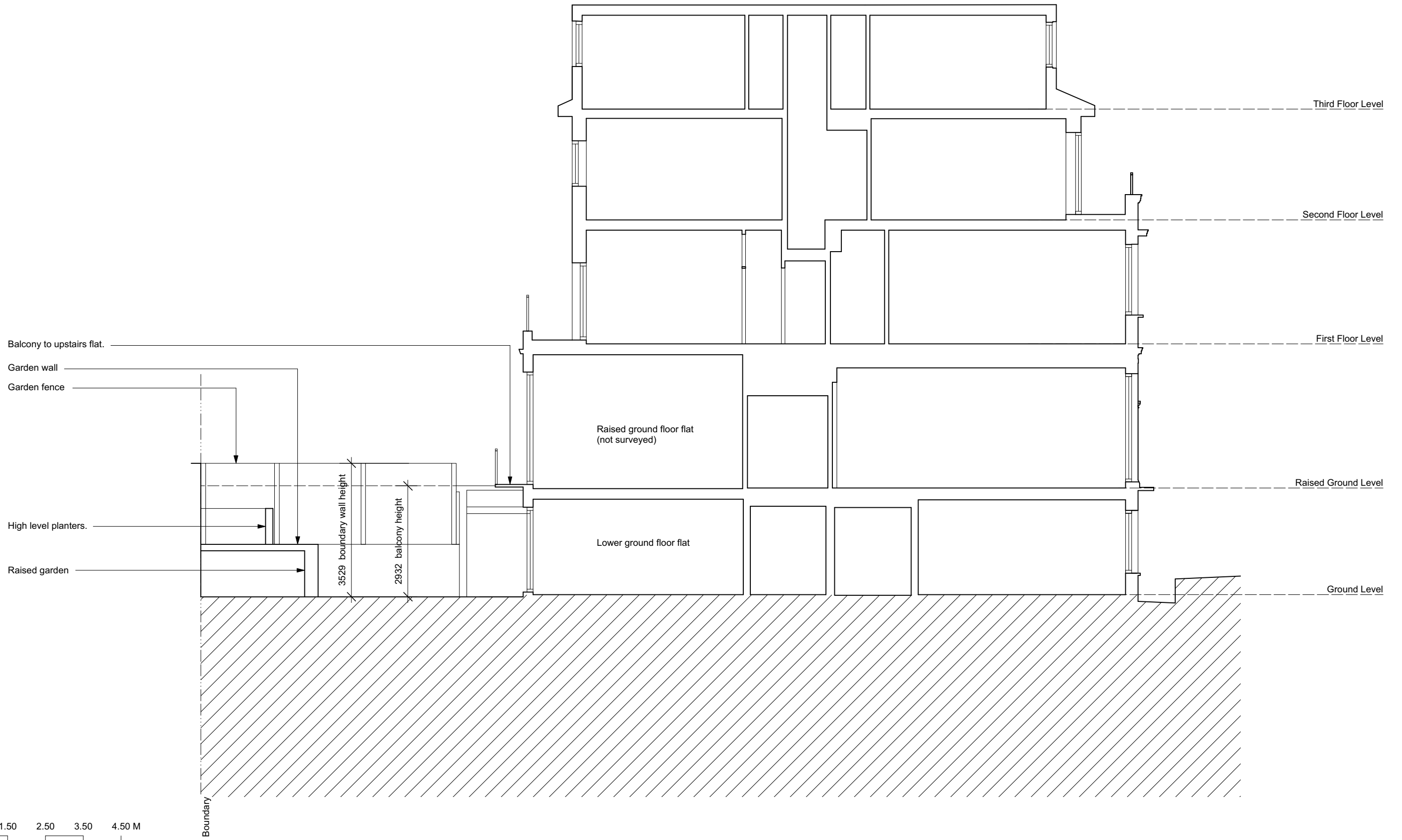
Project
1a Adamson Road, London NW3 3HX

Drawing title
Proposed Rear Elevation

Planning

Easton Design Office Limited
Second Floor
23-24 Easton Street
London WC1X 0DS
+44 (0) 207 043 4614
eastondesignoffice.com





Scale
1:100 @ A3
Drawn by
DB

Drawing no.
301
Date
December 2022

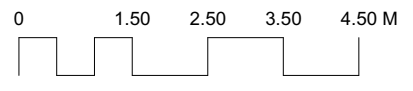
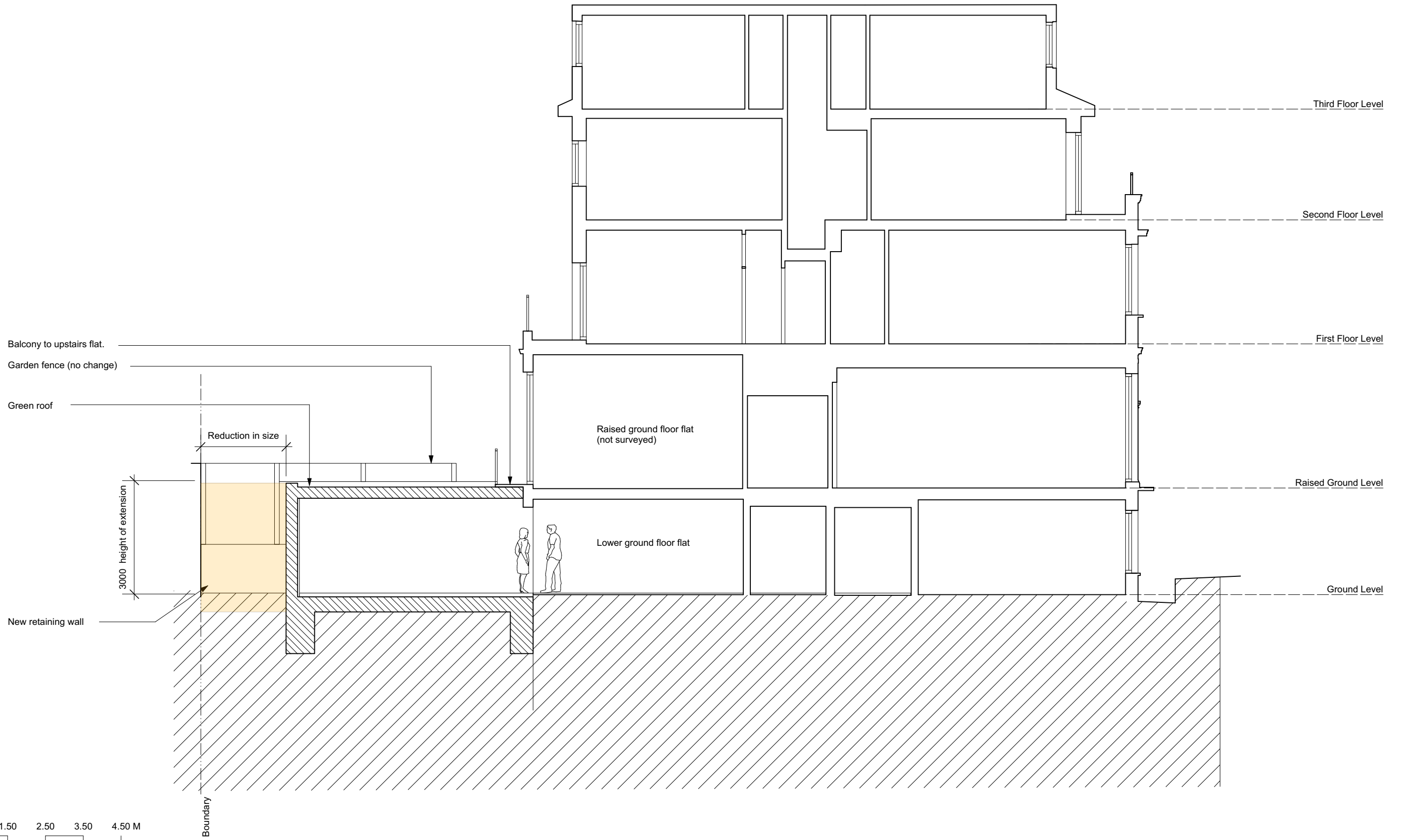
Client

Project
1a Adamson Road, London NW3 3HX

Drawing title
Existing Long Section
Planning

Easton Design Office Limited
Second Floor
23-24 Easton Street
London WC1X 0DS
+44 (0) 207 043 4614
eastondesignoffice.com





Rev B- Extension reduced 25% from bay
Rev A- Omit basement

Scale
1:100 @ A3
Drawn by
DB

Drawing no.
302
Date
December 2022

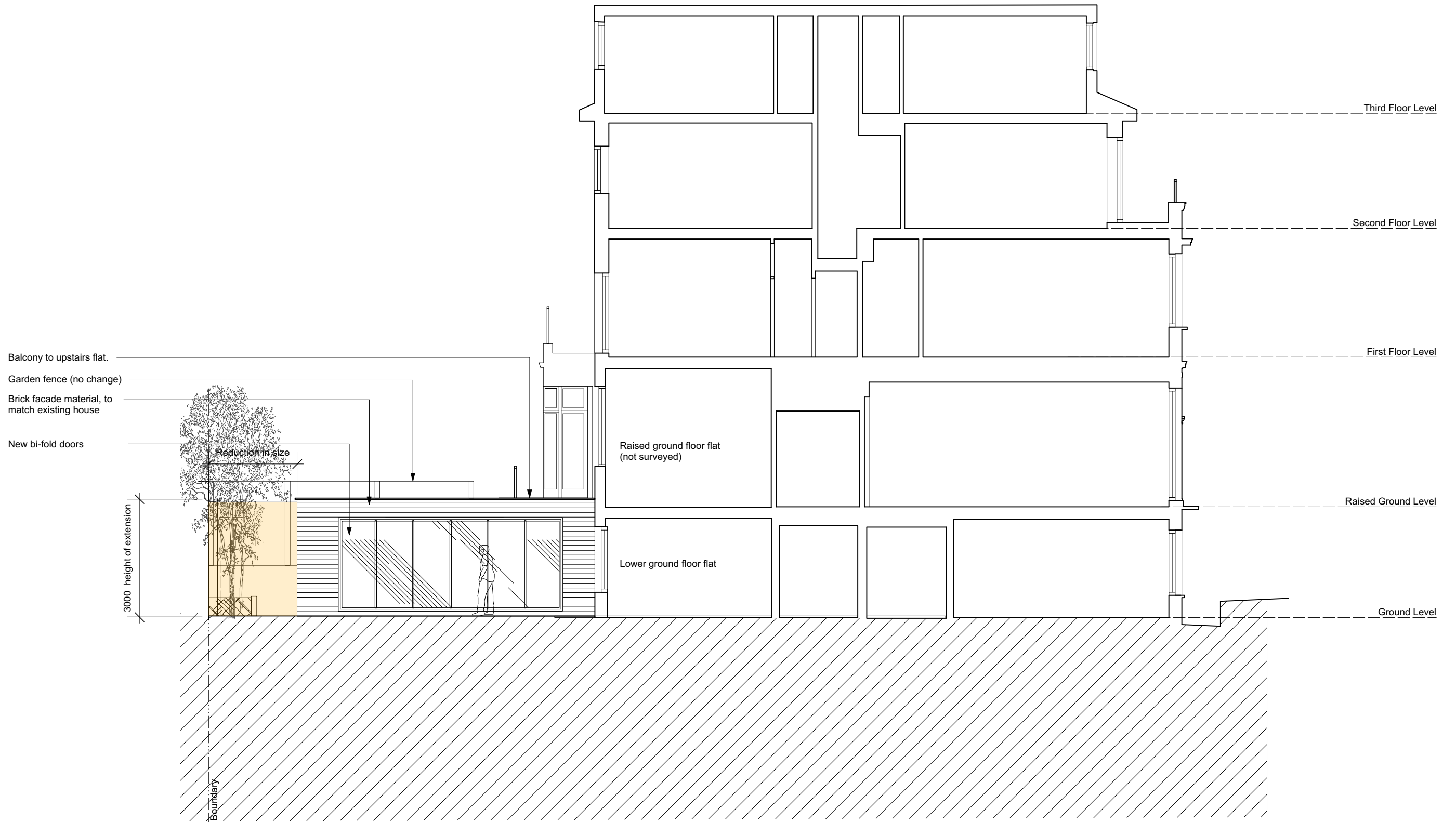
Client

Project
1a Adamson Road, London NW3 3HX

Drawing title
Proposed Long Section 01
Planning

Easton Design Office Limited
Second Floor
23-24 Easton Street
London WC1X 0DS
+44 (0) 207 043 4614
eastondesignoffice.com





Balcony to upstairs flat.
 Garden fence (no change)
 Brick facade material, to match existing house
 New bi-fold doors

3000 height of extension

Boundary

Reduction in size

Raised ground floor flat (not surveyed)

Lower ground floor flat

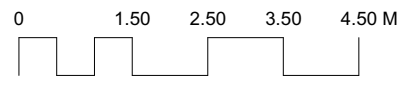
Third Floor Level

Second Floor Level

First Floor Level

Raised Ground Level

Ground Level



Rev B- Extension reduced 25% from bay
 Rev A- Omit basement

Scale
 1:100 @ A3
 Drawn by
 DB

Drawing no.
 303
 Date
 December 2022

Client
 Project
 1a Adamson Road, London NW3 3HX

Drawing title
 Proposed Long Section 02
Planning

Easton Design Office Limited
 Second Floor
 23-24 Easton Street
 London WC1X 0DS
 +44 (0) 207 043 4614
 eastondesignoffice.com

