

PAUL O'GORMAN BUILDING

THE PROPOSED CHILDREN'S CANCER CENTRE (CCC)

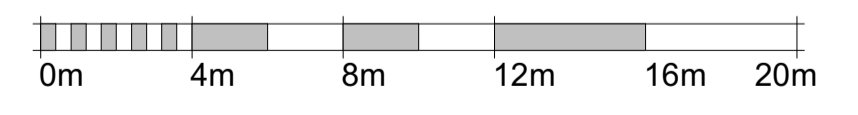
OCTAV BOTNAR WING

MAIN ENTRANCE

South Elevation as Proposed
1:200

Key

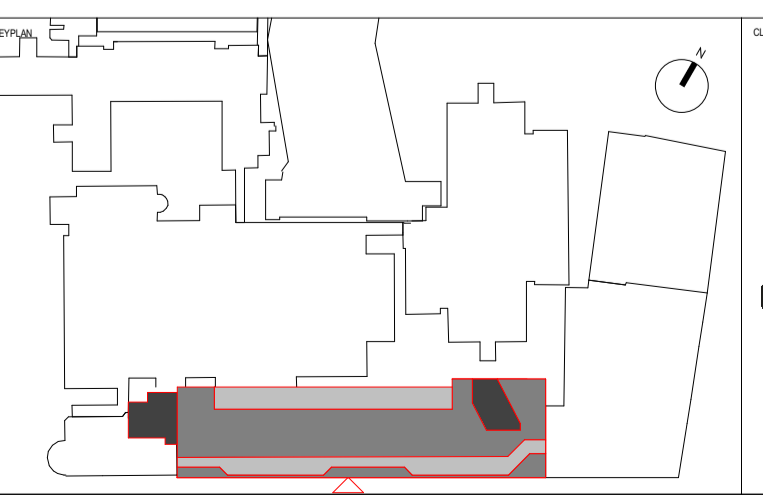
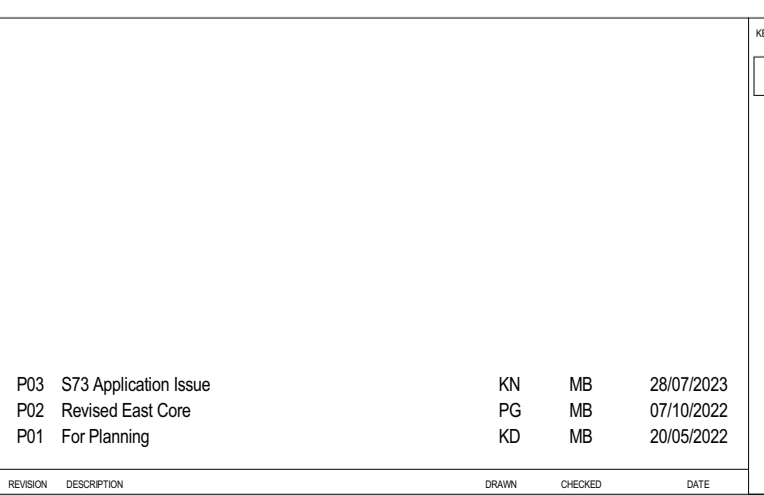
- 1 Red brick finish
- 2 Textured red brick finish - vertically oriented with relief pattern
- 3 Textured red brick finish - sawtooth profile in horizontal courses
- 4 Reconstituted stone finish - colour red/acid etched
- 5 Reconstituted stone finish with vertical fluting relief detail - colour red/acid etched
- 6 Reconstituted stone fins and angled overpanel window surround - colour buff / acid etched
- 7 Reconstituted Stone finish - colour buff / acid etched
- 8 Bay window assembly comprising neutral solar control glass in thermally broken anodised aluminium frame. Buff coloured reconstituted stone surround and cill panel
- 9 High performance double glazed window with neutral solar control glass. G-Value 0.34
- 10 PPC aluminium railings with increased spacing above 1100mm
- 11 Weather louvre in colour to match buff finishes
- 12 Balcony soffits comprising secret fixed stamped stainless steel sheets
- 13 Ventilated rainscreen cladding system - composite panel finish
- 14 Curtain walling system with back enamelled insulated glass spandrel panels
- 15 Perforated corrugated metal rainscreen with PPC finish
- 16 Ventilated rainscreen system coloured cill and overpanels



BUILDING DESIGN PARTNERSHIP SHALL HAVE NO RESPONSIBILITY FOR ANY USE MADE OF THIS DOCUMENT OTHER THAN FOR THAT WHICH IT WAS PREPARED AND ISSUED.
ALL DIMENSIONS SHOULD BE CHECKED ON SITE.
DO NOT SCALE FROM THIS DRAWING
ANY DRAWING ERRORS OR DIVERGENCES SHOULD BE BROUGHT TO THE ATTENTION OF BUILDING DESIGN PARTNERSHIP AT THE ADDRESS SHOWN BELOW.
DRAWINGS SHALL BE READ IN CONJUNCTION WITH THE FOLLOWING BEFORE WORK COMMENCES:
• THE CDM DESIGN ISSUES REGISTER
• THE BDP RISK SERIES OF DRAWINGS
• THE PROJECT CDM RISK REGISTER

NOTES

| REVISION | DESCRIPTION | DRAWN | CHECKED | DATE |
|----------|-----------------------|-------|---------|------------|
| P03 | S73 Application Issue | KN | MB | 28/07/2023 |
| P02 | Revised East Cone | PG | MB | 07/10/2022 |
| P01 | For Planning | HD | MB | 20/05/2022 |



CONTRACTOR
SISK CONTRACTORS
John Sisk & Son Ltd
2410 Regents Court
The Crescent
Birmingham Business Park
Birmingham
B37 7YE

DESIGN LEAD
BDP.
16 Brewhouse Yard
Clerkenwell
London
EC1V 4LJ
United Kingdom
T +44 [0]20 7812 8000
www.bdp.com

| | | | |
|--------------------------------------|----------------------|-------------|------------|
| GOSH Children's Cancer Centre | | PROJECT NO: | P2007598 |
| South Elevation as Proposed | | | |
| GOSHCCC-BDP-ZZ-ZZ-DR-A-2000-2071 | | | |
| ISSUED FOR: | S2 - For Information | SCALE: | 1:200 |
| DATE: | 28/07/2023 | ISSUED BY: | @A1 |
| DESIGNED BY: | KN | CHECKED BY: | MB |
| APPROVED BY: | BZ | DATE: | 28/07/2023 |
| PROJECT: | Planning | REVISION: | P03 |