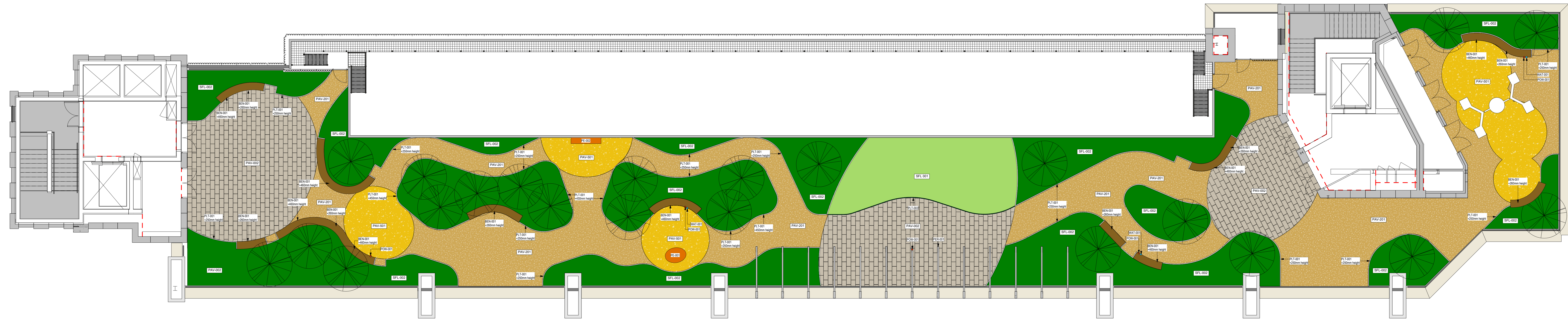


BUILDING DESIGN PARTNERSHIP SHALL HAVE NO RESPONSIBILITY FOR ANY USE MADE OF THIS DOCUMENT OTHER THAN FOR THAT WHICH IT WAS PREPARED AND ISSUED.
 ALL DIMENSIONS SHOULD BE CHECKED ON SITE.
 DO NOT SCALE FROM THIS DRAWING.
 ANY DRAWING ERRORS OR OMISSIONS SHOULD BE BROUGHT TO THE ATTENTION OF BUILDING DESIGN PARTNERSHIP AT THE ADDRESS SHOWN BELOW.
 DRAWINGS SHALL BE READ IN CONJUNCTION WITH THE FOLLOWING BEFORE WORK COMMENCES:
 - THE CONSTRUCTION PROGRAM
 - THE SCHEDULE OF WORKS
 - THE PROJECT COST REGISTER

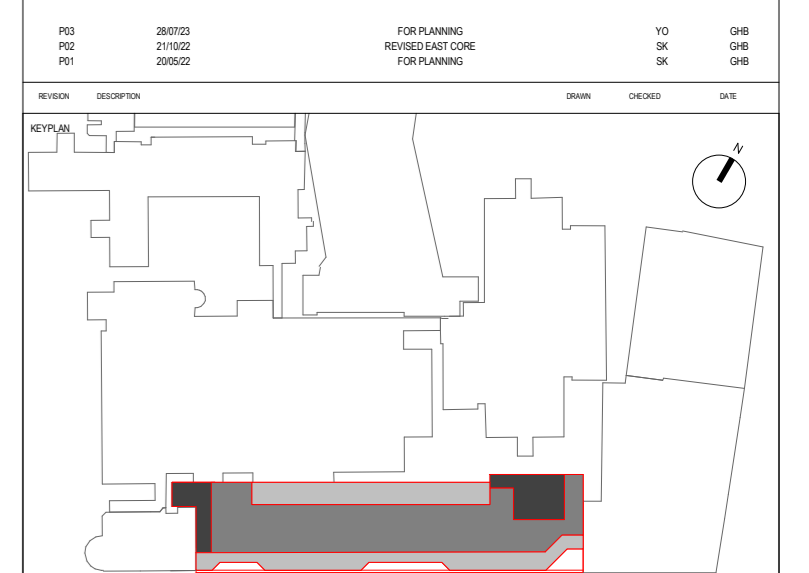
NOTES



- FAV-001 Paved ground gravel laid on metal tray
- FAV-002 Paved ground gravel laid on metal tray
- FAV-003 Paved ground gravel laid on metal tray
- FAV-004 Paved ground gravel laid on metal tray
- FAV-005 Paved ground gravel laid on metal tray
- FAV-006 Paved ground gravel laid on metal tray
- FAV-007 Paved ground gravel laid on metal tray
- FAV-008 Paved ground gravel laid on metal tray
- FAV-009 Paved ground gravel laid on metal tray
- FAV-010 Paved ground gravel laid on metal tray
- FAV-011 Paved ground gravel laid on metal tray
- FAV-012 Paved ground gravel laid on metal tray
- FAV-013 Paved ground gravel laid on metal tray
- FAV-014 Paved ground gravel laid on metal tray
- FAV-015 Paved ground gravel laid on metal tray
- FAV-016 Paved ground gravel laid on metal tray
- FAV-017 Paved ground gravel laid on metal tray
- FAV-018 Paved ground gravel laid on metal tray
- FAV-019 Paved ground gravel laid on metal tray
- FAV-020 Paved ground gravel laid on metal tray
- FAV-021 Paved ground gravel laid on metal tray
- FAV-022 Paved ground gravel laid on metal tray
- FAV-023 Paved ground gravel laid on metal tray
- FAV-024 Paved ground gravel laid on metal tray
- FAV-025 Paved ground gravel laid on metal tray
- FAV-026 Paved ground gravel laid on metal tray
- FAV-027 Paved ground gravel laid on metal tray
- FAV-028 Paved ground gravel laid on metal tray
- FAV-029 Paved ground gravel laid on metal tray
- FAV-030 Paved ground gravel laid on metal tray
- FAV-031 Paved ground gravel laid on metal tray
- FAV-032 Paved ground gravel laid on metal tray
- FAV-033 Paved ground gravel laid on metal tray
- FAV-034 Paved ground gravel laid on metal tray
- FAV-035 Paved ground gravel laid on metal tray
- FAV-036 Paved ground gravel laid on metal tray
- FAV-037 Paved ground gravel laid on metal tray
- FAV-038 Paved ground gravel laid on metal tray
- FAV-039 Paved ground gravel laid on metal tray
- FAV-040 Paved ground gravel laid on metal tray
- FAV-041 Paved ground gravel laid on metal tray
- FAV-042 Paved ground gravel laid on metal tray
- FAV-043 Paved ground gravel laid on metal tray
- FAV-044 Paved ground gravel laid on metal tray
- FAV-045 Paved ground gravel laid on metal tray
- FAV-046 Paved ground gravel laid on metal tray
- FAV-047 Paved ground gravel laid on metal tray
- FAV-048 Paved ground gravel laid on metal tray
- FAV-049 Paved ground gravel laid on metal tray
- FAV-050 Paved ground gravel laid on metal tray
- FAV-051 Paved ground gravel laid on metal tray
- FAV-052 Paved ground gravel laid on metal tray
- FAV-053 Paved ground gravel laid on metal tray
- FAV-054 Paved ground gravel laid on metal tray
- FAV-055 Paved ground gravel laid on metal tray
- FAV-056 Paved ground gravel laid on metal tray
- FAV-057 Paved ground gravel laid on metal tray
- FAV-058 Paved ground gravel laid on metal tray
- FAV-059 Paved ground gravel laid on metal tray
- FAV-060 Paved ground gravel laid on metal tray
- FAV-061 Paved ground gravel laid on metal tray
- FAV-062 Paved ground gravel laid on metal tray
- FAV-063 Paved ground gravel laid on metal tray
- FAV-064 Paved ground gravel laid on metal tray
- FAV-065 Paved ground gravel laid on metal tray
- FAV-066 Paved ground gravel laid on metal tray
- FAV-067 Paved ground gravel laid on metal tray
- FAV-068 Paved ground gravel laid on metal tray
- FAV-069 Paved ground gravel laid on metal tray
- FAV-070 Paved ground gravel laid on metal tray
- FAV-071 Paved ground gravel laid on metal tray
- FAV-072 Paved ground gravel laid on metal tray
- FAV-073 Paved ground gravel laid on metal tray
- FAV-074 Paved ground gravel laid on metal tray
- FAV-075 Paved ground gravel laid on metal tray
- FAV-076 Paved ground gravel laid on metal tray
- FAV-077 Paved ground gravel laid on metal tray
- FAV-078 Paved ground gravel laid on metal tray
- FAV-079 Paved ground gravel laid on metal tray
- FAV-080 Paved ground gravel laid on metal tray
- FAV-081 Paved ground gravel laid on metal tray
- FAV-082 Paved ground gravel laid on metal tray
- FAV-083 Paved ground gravel laid on metal tray
- FAV-084 Paved ground gravel laid on metal tray
- FAV-085 Paved ground gravel laid on metal tray
- FAV-086 Paved ground gravel laid on metal tray
- FAV-087 Paved ground gravel laid on metal tray
- FAV-088 Paved ground gravel laid on metal tray
- FAV-089 Paved ground gravel laid on metal tray
- FAV-090 Paved ground gravel laid on metal tray
- FAV-091 Paved ground gravel laid on metal tray
- FAV-092 Paved ground gravel laid on metal tray
- FAV-093 Paved ground gravel laid on metal tray
- FAV-094 Paved ground gravel laid on metal tray
- FAV-095 Paved ground gravel laid on metal tray
- FAV-096 Paved ground gravel laid on metal tray
- FAV-097 Paved ground gravel laid on metal tray
- FAV-098 Paved ground gravel laid on metal tray
- FAV-099 Paved ground gravel laid on metal tray
- FAV-100 Paved ground gravel laid on metal tray



1 Landscape Level 10
1:100



SISK
Sustainable Infrastructure Systems

John Sisk & Son Ltd
2410 Regents Court
The Crescent
Birmingham Business Park
Birmingham
B37 7YE

BDP.

15 Brewhouse Yard
Clerkenwell
London
EC1V 4LJ
United Kingdom
T +44 (0)20 7612 8000
www.bdp.com