

OCTAV BOTNAR WING

THE PROPOSED CHILDREN'S CANCER CENTRE (CCC)

VARIETY CLUB BUILDING (VCB)

Key

- 1 Red brick finish

2 Textured red brick finish - vertically oriented with relief pattern

3 Textured red brick finish - sawtooth profile in horizontal courses

4 Reconstituted stone finish - colour red/acid etched

5 Reconstituted stone finish with vertical fluting relief detail - colour red/acid etched
- 6 Reconstituted stone fins and angled overpanel window surround - colour buff / acid etched

7 Reconstituted Stone finish - colour buff / acid etched

8 Bay window assembly comprising neutral solar control glass in thermally broken anodised aluminium frame. Buff coloured reconstituted stone surround and cill panel

9 High performance double glazed window with neutral solar control glass. G-Value 0.34
- 10 PPC aluminium railings with increased spacing above 1100mm

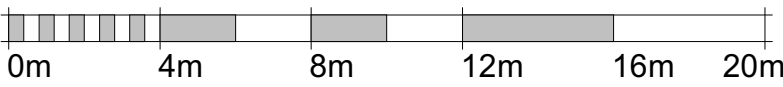
11 Weather louvre in colour to match buff finishes

12 Balcony soffits comprising secret fixed stamped stainless steel sheets

13 Ventilated rainscreen cladding system - composite panel finish

14 Curtain walling system with back enamelled insulated glass spandrel panels
- 15 Perforated corrugated metal rainscreen with PPC finish

16 Ventilated rainscreen system coloured cill and overpanels



BUILDING DESIGN PARTNERSHIP SHALL HAVE NO RESPONSIBILITY FOR ANY USE MADE OF THIS DOCUMENT OTHER THAN FOR THAT WHICH IT WAS PREPARED AND ISSUED.

ALL DIMENSIONS SHOULD BE CHECKED ON SITE.

DO NOT SCALE FROM THIS DRAWING

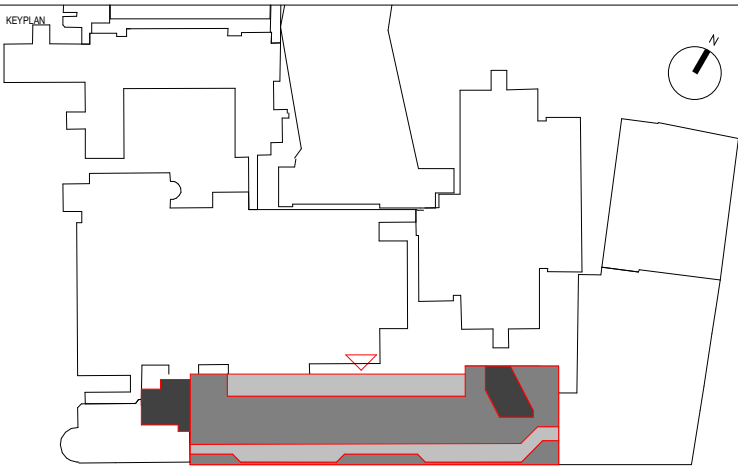
ANY DRAWING ERRORS OR DIVERGENCIES SHOULD BE BROUGHT TO THE ATTENTION OF BUILDING DESIGN PARTNERSHIP AT THE ADDRESS SHOWN BELOW.

DRAWINGS SHALL BE READ IN CONJUNCTION WITH THE FOLLOWING BEFORE WORK COMMENCES:

- THE CDM DESIGN ISSUES REGISTER
- THE BDP RISK SERIES OF DRAWINGS
- THE PROJECT CDM RISK REGISTER

NOTES

REVISION	DESCRIPTION	DRAWN	CHECKED	DATE
P03	S73 Application Issue	KN	MB	28/07/2023
P02	Revised East Core	PG	MB	07/10/2022
P01	For Planning	KD	MB	20/05/2022



CONTRACTOR
BLISS SISK CONTRACTORS
Established 1999
John Sisk & Son Ltd
2410 Regents Court
The Crescent
Birmingham Business Park
Birmingham
B37 7YE

DESIGN LEAD
BDP.
16 Browhouse Yard
Clerkenwell
London
EC1V 4LJ
United Kingdom
T +44 (0)20 7812 8000
www.bdp.com

GOSH Children's Cancer Centre

PROJECT NUMBER
P2007598

PROJECT TITLE
North Elevation as Proposed

DRAWING NO.
GOSHCCC-BDP-ZZ-ZZ-DR-A-2000-2073

ISSUANCE
S2 - For Information

SCALE
1 : 200

DATE
28/07/2023

DRAWN	CHECKED	APPROVED	FUNCTION OF ROLE	REVISION
KN	MB	BZ	Planning	P03