

HEEL'S BUILDING REPAIRS AND RENEWAL WORKS TO NON ORIGINAL INTERNAL FIRE DOORS AND COMPARTMENTATION WORKS TO OPENINGS



GENERAL OVERVIEW OF THE CONDITION OF FIRE DOORS

ONGOING CONCERN

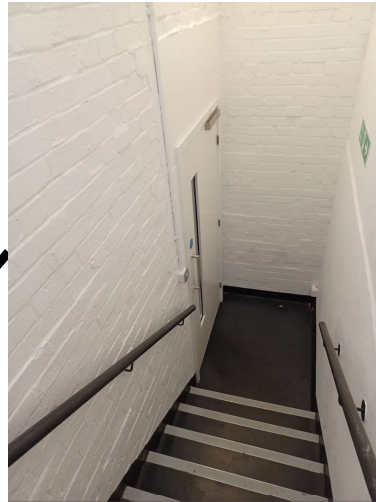
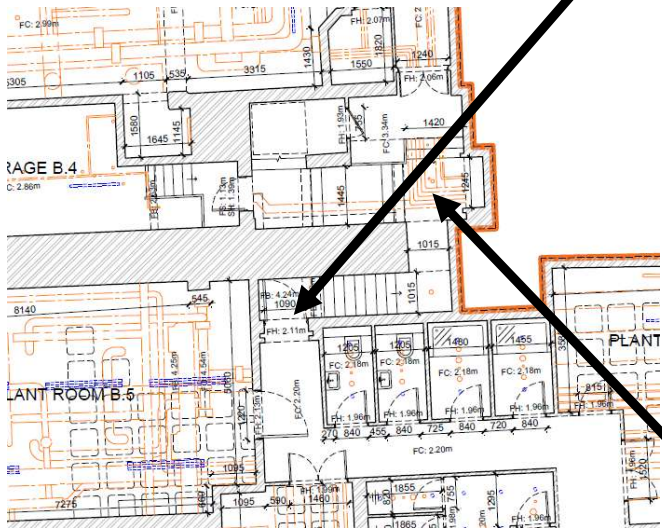
Following a fire door survey a package of works is required to bring the non original fire doors inline with modern day standards. The proposal allows to undertake these on a phased basis with the initial phase comprising repairs and renewal of a number of fire doors leading from a central staircase and addressing breaches to the compartmentation areas around the site.

PROPOSED RESOLUTION

The proposed package of works allows for two forms of repairs to existing non-original fire doors. Where a door is accompanied with appropriate certification to demonstrate it is a fire door repairs will be undertaken to bring the current installations in line with current regulations. However where a door does not hold any certification it is to be renewed on a like for like basis.

These works are to be progressed on a phased basis and allow for minimal disturbance to the surrounding areas. This phase of works encompass works to the means of escape leading from the residential units.

BASEMENT



Door rating : FD60

Proposed works: Ease and adjust leaf and frame

Effect on building heritage : Doors are modern installations and do not hold historic importance.

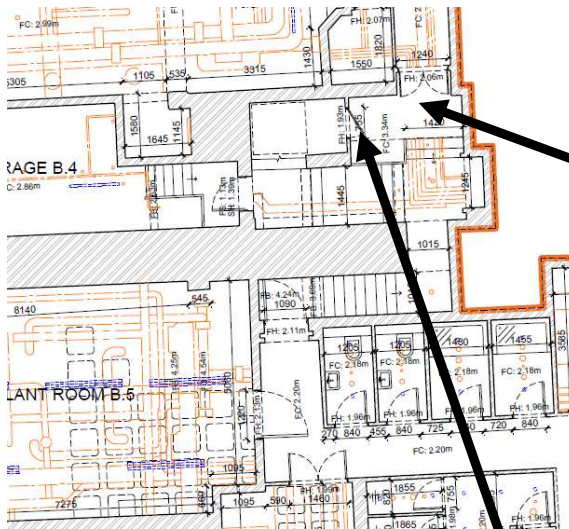


Door rating : N/K

Proposed works: renewal of door and frame with double leaf FD60 54mm Painted timber door set with iron monger and a vision pane.

Effect on building heritage : Doors are modern installations and do not hold historic importance.

BASEMENT



Door rating : Nominal

Proposed works: renewal of door and frame with double leaf FD60 54mm Painted timber door set with iron monger and a vision pane.

Effect on building heritage : Doors are modern installations and do not hold historic importance.

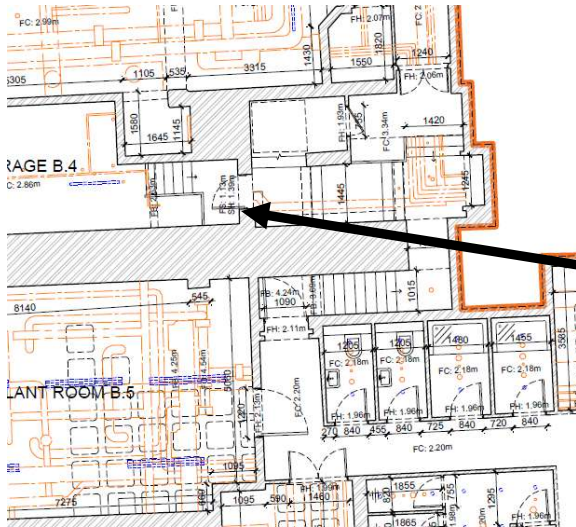


Door rating : Nominal

Proposed works: renewal of door and frame with Single leaf FD60 54mm Painted timber door set with iron monger and a vision pane.

Effect on building heritage : Doors are modern installations and do not hold historic importance.

BASEMENT

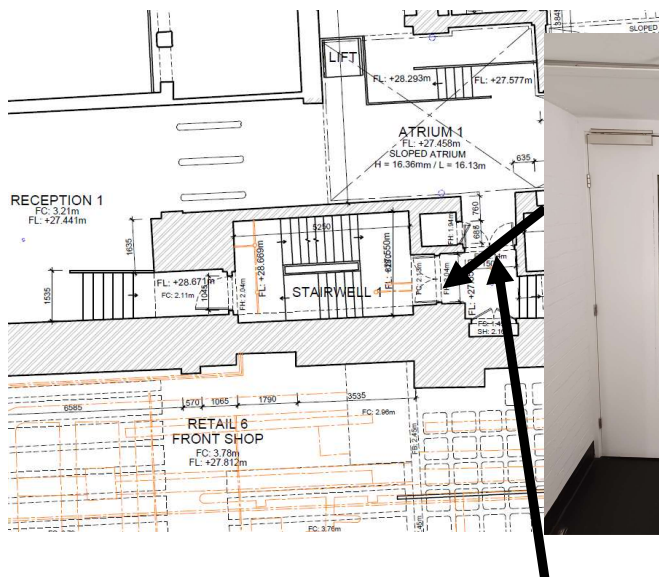


Door rating : Nominal

Proposed works: renewal of door and frame with Single leaf FD60 54mm Painted timber door set with iron monger and a vision pane.

Effect on building heritage : Doors are modern installations and do not hold historic importance.

GROUND FLOOR



Door rating : FD60

Proposed works: Ease and adjust leaf and frame.

Effect on building heritage : Doors are modern installations and do not hold historic importance.

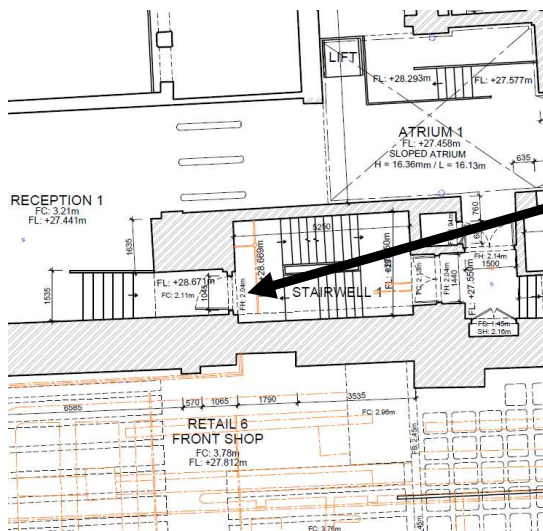


Door rating : FD60

Proposed works: Ease and adjust leaf and frame.

Effect on building heritage : Doors are modern installations and do not hold historic importance.

GROUND FLOOR



Door rating : FD60

Proposed works: Ease and adjust leaf and frame

Effect on building heritage : Doors are modern installations and do not hold historic importance.

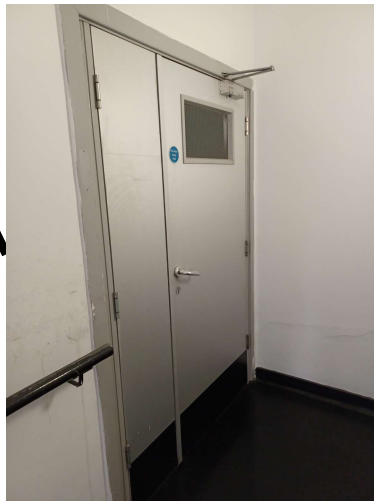
1ST FLOOR



Door rating : FD60

Proposed works: Ease and adjust leaf and frame.

Effect on building heritage : Doors are modern installations and do not hold historic importance.



Door rating : Nominal

Proposed works: renewal of door and frame with Single leaf FD60 54mm Painted timber door set with iron monger and a vision pane.

Effect on building heritage : Doors are modern installations and do not hold historic importance.

1ST FLOOR

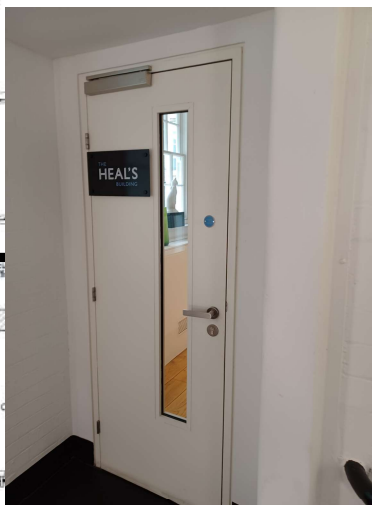
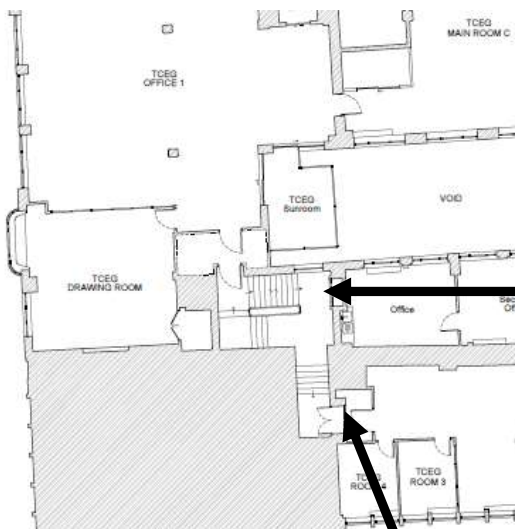


Door rating : FD60

Proposed works: Ease and adjust leaf and frame.

Effect on building heritage : Doors are modern installations and do not hold historic importance.

2ND FLOOR



Door rating : FD60

Proposed works: Ease and adjust leaf and frame.

Effect on building heritage : Doors are modern installations and do not hold historic importance.

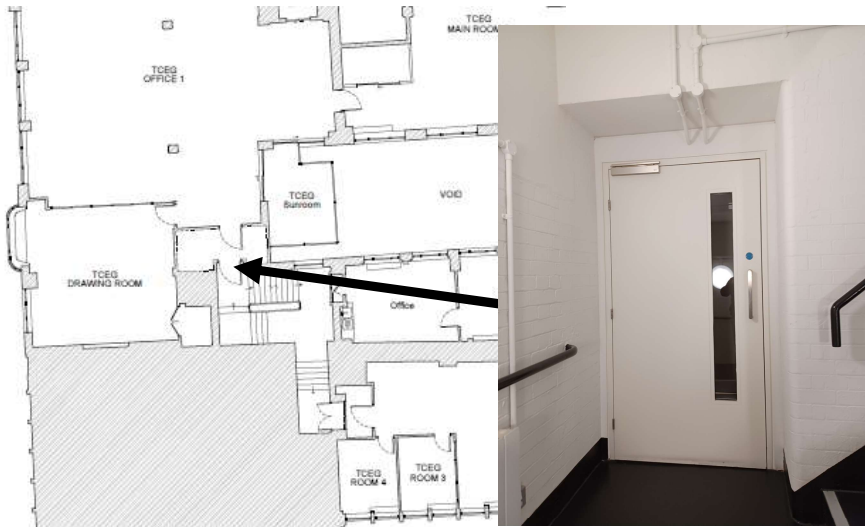


Door rating : FD60

Proposed works: Ease and adjust leaf and frame.

Effect on building heritage : Doors are modern installations and do not hold historic importance.

2ND FLOOR

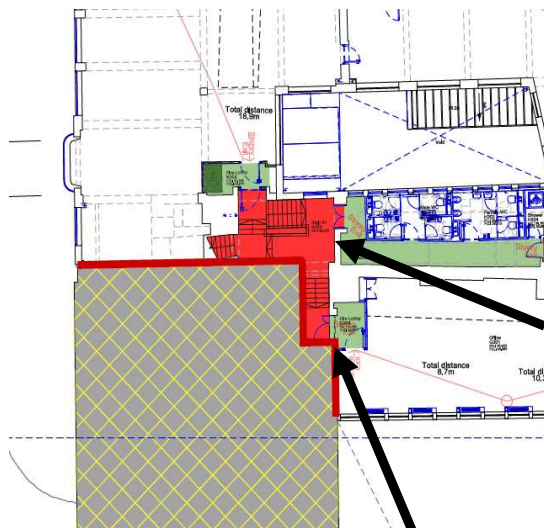


Door rating : FD60

Proposed works: Ease and adjust leaf and frame.

Effect on building heritage : Doors are modern installations and do not hold historic importance.

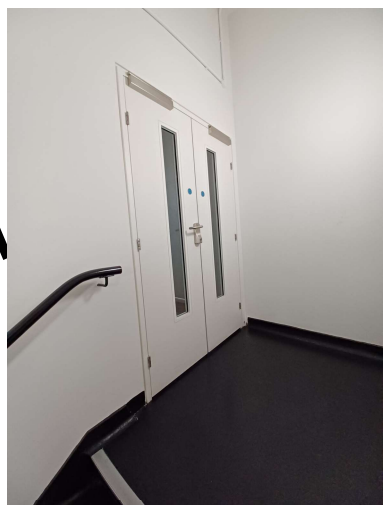
3RD FLOOR



Door rating : FD60

Proposed works: Ease and adjust leaf.

Effect on building heritage : Doors are modern installations and do not hold historic importance.

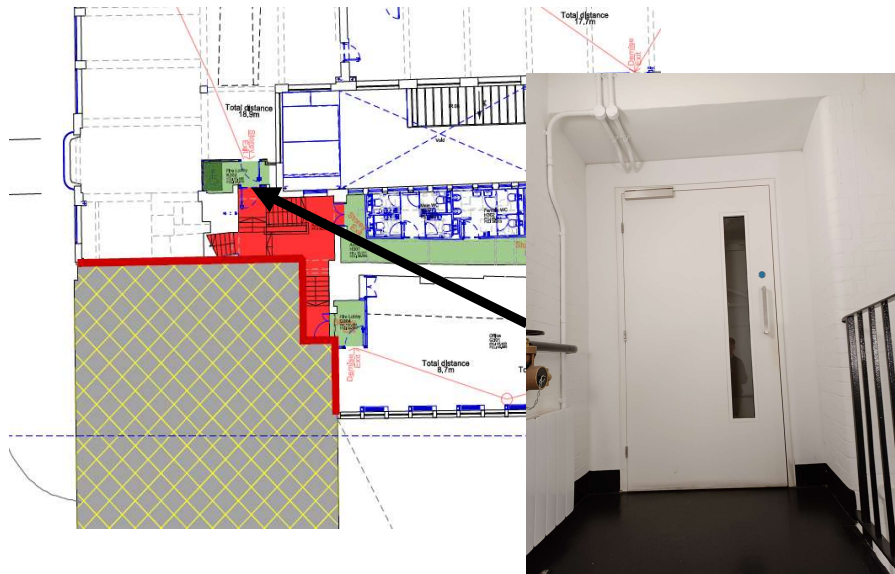


Door rating : FD60

Proposed works: Ease and adjust leaf.

Effect on building heritage : Doors are modern installations and do not hold historic importance.

3RD FLOOR

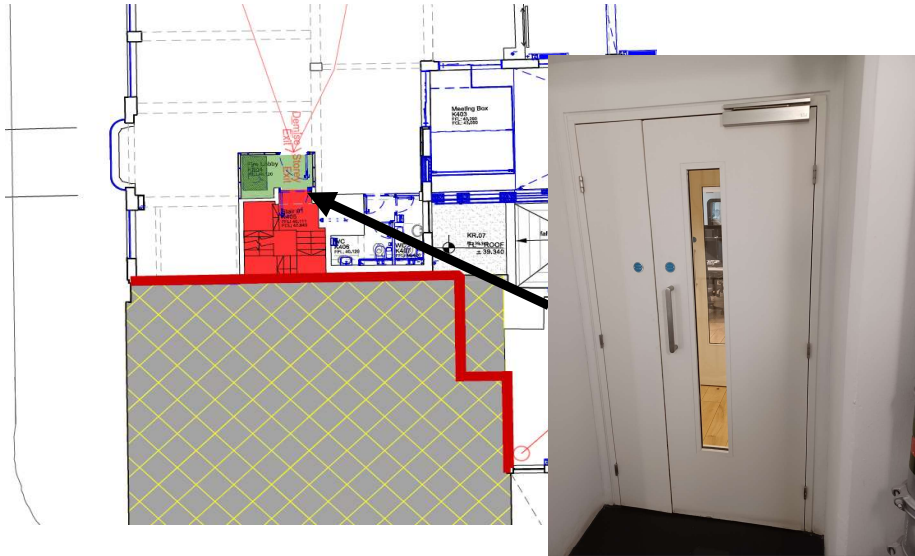


Door rating : FD60

Proposed works: Ease and adjust leaf.

Effect on building heritage : Doors are modern installations and do not hold historic importance.

4TH FLOOR DOORS



Door rating : FD60

Proposed works: Ease and adjust leaf.

Effect on building heritage : Doors are modern installations and do not hold historic importance.

5TH FLOOR DOORS

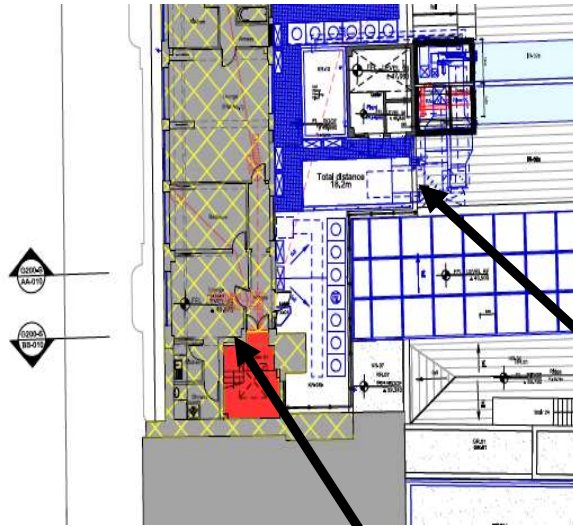


Door rating : FD60

Proposed works: Ease and adjust leaf.

Effect on building heritage : Doors are modern installations and do not hold historic importance.

6TH FLOOR DOORS



Door rating : Notional

Proposed works: renewal of door and frame with Single leaf FD60 54mm Painted timber door set with iron monger and a vision pane.

Effect on building heritage : Doors are modern installations and do not hold historic importance.



Door rating : Notional

Proposed works: renewal of door and frame with Single leaf FD60 54mm Painted timber door set with iron monger and a vision pane.

Effect on building heritage : Doors are modern installations and do not hold historic importance.

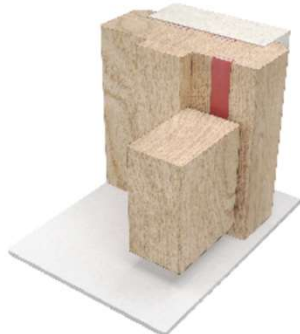
PROPOSED MATERIALS

FIRE SEALS

FIRE SEALS

LP1004, LP1504, LP2004, LP2504

Our intumescent fire door seals offer fire protection where no smoke sealing is required. Combine a fire seal with a Batwing® seal for acoustic + smoke containment. Available in a choice of sizes to cover 30 + 60 minute applications, the fire seal also includes integral antimicrobial protection.



Fire seal

ACOUSTIC, SMOKE + FIRE SEALS



SYSTEM SPECIFICATIONS

Test evidence

- ▶ Fire: BS EN 1634-1: 2008.
- ▶ Fire: BS 476-22: 1997.

Performance

- ▶ Protects against fire.
- ▶ Integral antimicrobial protection.

Size

- ▶ 10 x 4mm.
- ▶ 15 x 4mm.
- ▶ 20 x 4mm.
- ▶ 25 x 4mm.
- ▶ Other sizes available, please ask for details.

Location

- ▶ Single and double leaf doors.

Use with

- ▶ Smoke seals and any architectural seals.

Min/max gap size

- ▶ 5mm/4mm.

Seal material

- ▶ PVC encased sodium silicate.

Standard lengths

- ▶ 1m and 2.1m.
- ▶ Other lengths to special order.

Filing

- ▶ Heavy duty self-adhesive backing tape.

Finishes

- ▶ Available in a range of standard colours, plus woodgrain and metallic finishes for superior aesthetics.

Accreditations



T: +44 (0)1624 634252
E: mtdg@lorientuk.com

www.lorientgroup.com

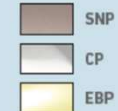
VI



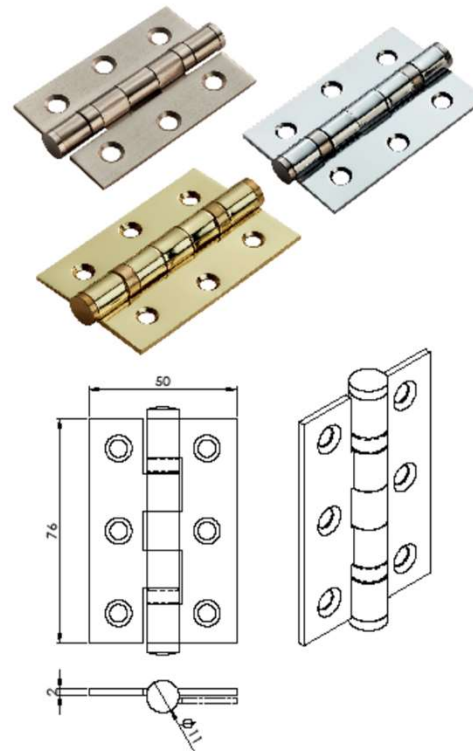
NEW PRODUCT DATA SHEET

HIN1322 HINGES

- Now Available in plated finishes



- Fully threaded PZ1 25mm wood screws



Carlisle Brass Ltd
Parkhouse Road
Carlisle
Cumbria
CA3 0JU

Tel: 01228 511 030
Fax: 01228 511 885

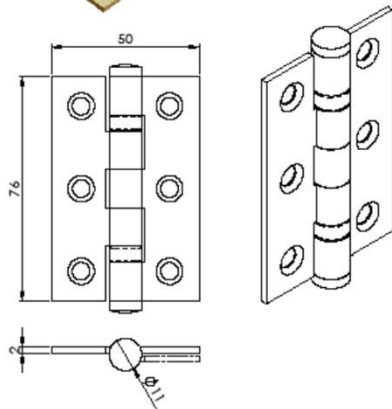


www.carlislebrass.com

PROPOSED MATERIALS

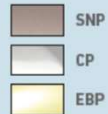


NEW PRODUCT
DATA SHEET



HIN1322 HINGES

- Now Available in plated finishes



- Fully threaded PZ1 25mm wood screws



Carlisle Brass Ltd
Parkhouse Road
Carlisle
Cumbria
CA3 0JU

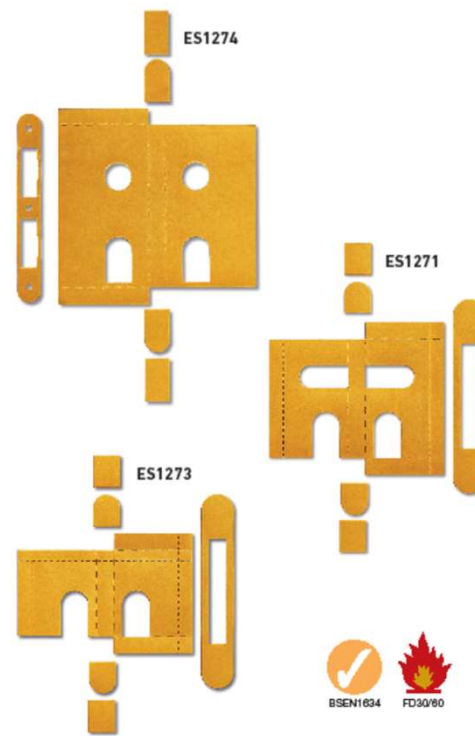
Tel: 01228 511 030
Fax: 01228 511 885



www.carlislebrass.com



NEW PRODUCT
DATA SHEET



ES1274 DIN LOCK SET

Now with intumescent strike plate to suit Easi-T lock dimensions and able to work with 55mm and 60mm backset follower centres S/A

ES1271 UNIVERSAL UK SASHLOCK SET

Includes strike plate pack, with cut down serrations to fit 3.0" and 2.5" case sizes S/A

ES1273 UNIVERSAL UK DEADLOCK SET

Includes strike plate pack, with cut down serrations to fit 3.0" and 2.5" case sizes S/A

ES1274/STRIKE Strike plate kit

Material Intercalated graphite

Features and benefits See overleaf . . .

Carlisle Brass Ltd
Parkhouse Road
Carlisle
Cumbria
CA3 0JU

Tel: 01228 511 030
Fax: 01228 511 885



www.carlislebrass.com

PROPOSED MATERIALS

 ©

Intumescent Hinge Pads - Graphite

Hinge are manufactured from a high performance 1mm flexible Intumescent Sheet. Fire Tested to BS 476: Part 22 for both 30 & 60 minute applications.

Hinge Pad protection protects ironmongery installed on fire doors without compromising the integrity of the fire door assembly.

Standards

- BS 476: Part 22

Available as

Square Corners

HNG001S	100x31mm	
HNG001SS	100x31mm	S/Adhesive
HNG002S	100x36mm	
HNG002SS	100x36mm	S/Adhesive
HNG003S	100x40mm	
HNG003RS	100x40mm	S/Adhesive

Radius Corners

HNG001R	100x31mm	
HNG001RS	100x31mm	S/Adhesive



COMPARTMENTATION WORKS

ONGOING CONCERN

Following a compartmentation survey a package of works is required to address breaches to the compartmentation around the site. These present a potential risk and therefore a strategy/package of works is required to address these downfalls.

PROPOSED RESOLUTION

The proposed package allows to address these areas using modern intumescent materials to address areas identified within the compartmentation survey.

These works are to be progressed on a phased basis and allow for minimal disturbance to the surrounding areas. The works will be widespread across the entirety of the building.

A proposal of the material can be found on the following page. It is important to note the proposed works

COMPARTMENTATION MATERIAL



Installation Instructions:

Ensure within aperture is clean and free of debris, loose cement, and remove all dust from surfaces requiring installation.

Detail A - Single FB750 Intubatt up to 120 Integrity, 60 Insulation

1. Cut FB750 Intubatt to tightly fit into aperture.
2. Coat FB750 Intubatt edges and fit into opening at required position
3. Note: Adoption of additional layer of FB750 Intubatt as per "Detail D" will provide up to 120 minutes insulation and integrity.

Detail B - Single FB750 Intubatt within FB750 Intubatt lined opening rated as Detail A

1. Cut FB750 Intubatt to form lining to aperture to bridge cavity, ensuring FB750 Intubatt finishes flush with face of concrete / block-work wall.
2. Bond FB750 Intubatt lining to the opening with FS702 Intumastic
3. Fit FB750 Intubatt into opening ensuring good bonding to framing and concrete / blockwork edge.
4. Cut FB750 Intubatt to tightly fit into FB750 Intubatt Lining
5. Note: Adoption of additional layer of FB750 Intubatt as per "Detail D" will provide up to 120 minutes insulation and integrity.

Detail C - Double pass FB750 Intubatt rated up to 120 Integrity and Insulation

1. Cut FB750 Intubatt to required size and shape, ensuring the FB750 Intubatt will overlap the concrete / blockwork wall a minimum of 75mm around the opening.
2. Apply FS702 Intumastic to concrete/blockwork where the FB750 Intubatt is to be fitted, to bond FB750 Intubatt to concrete / blockwork.
3. Firmly press FB750 Intubatt to concrete/blockwork to ensure bond.
4. Fix the FB750 Intubatt to the concrete / blockwork using minimum 75mm long steel screws and 23mm diameter steel washers. Fixings should not exceed 30mm from any edge and not exceeding 200mm centres.
5. Repeat to opposite side of the wall if required.

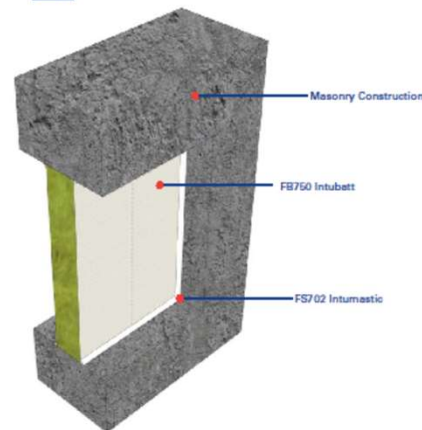
Detail D - Double FB750 Intubatt up to 240 Integrity and Insulation

1. Cut FB750 Intubatt to tightly fit into aperture
2. Coat FB750 Intubatt edges and fit into opening ensuring FB750 Intubatt finishes flush with plasterboard face.
3. Repeat to opposite side of the wall if required.

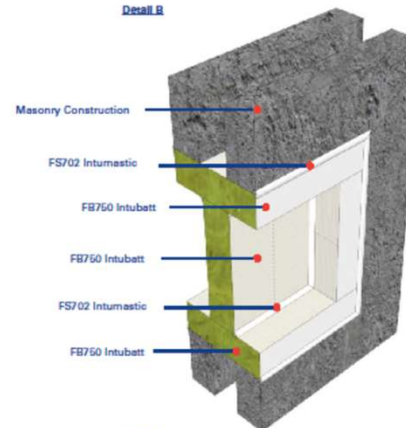
General

1. Coat all joints, exposed edges of FB750 Intubatt and damages to coating with FS702 Intumastic Brush Grade.
2. Apply FS702 Intumastic bead to all FB750 Intubatt interfaces.

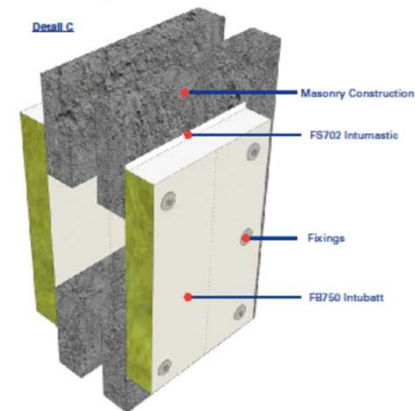
Detail A



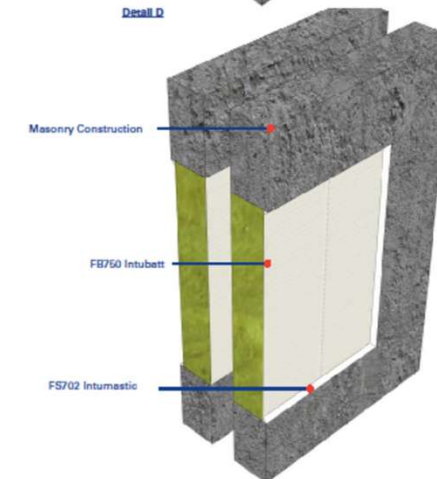
Detail B



Detail C



Detail D



Test Information:

Test: BSEN1266 / BS476

Products:

FB750 Intubatt & FS702 Intumastic

Scenario:

Penetration through concrete / blockwork wall construction

Penetrations:

Various penetrations tested, see drawings TBC for specific installation guidelines

Void Size:

1190mm x unlimited length above FB750 Intubatt length 1200 framework required.

Fire Resistance:

Tested up to 240 minutes. Please see specific detail for fire rating. Fire ratings contained herein are based upon plain seals only.

Acoustic:

Test: BRE 224463
FB750 Intubatt 1, Two Layers
Void 1.0m2 69dB

Test: BM Trade Z/12017
FB750 Intubatt 2 One Layer
Void 0.6m2 36dB

FB750 Intubatt 2 Two Layer
Void 0.3m2 67dB
Void 0.6m2 60dB

Nullifire details will only perform to the substrates performance capabilities. This applies to fire and acoustic. It is the responsibility of the purchaser to ensure suitability. If in doubt call technical.

Drawing Title:

Openings within blockwork/concrete wall construction.

Drawing Reference No:

PS-001



The published fire ratings have been achieved by following the instructions set out above. Use of alternative components or deviations from the instructions in anyway will remove Nullifire from any design liability. Nullifire will not accept responsibility for the consequences of the using our products in applications or purposes not intended by Nullifire. Support advice should be sought where such applications are contemplated. The information contained within this drawing is believed to be correct on the date of publication, and is based upon tested and certified solutions. The policy of Nullifire is one of constant improvement. Installers must therefore ensure that they are following the latest published drawings and instructions. Whilst we will endeavour to keep our products up to date, the accuracy of the information contained within this drawing may be affected by product changes to the law or regulatory requirements and other technical developments to the specification of Nullifire products. For more information, please contact a member of our technical team on techinfo@nullifire.com or [+441203750000](tel:+441203750000)



THANK YOU

For more information please contact fahd.ali@workman.co.uk

WORKMAN.CO.UK

BIRMINGHAM | BRISTOL | CAMBRIDGE | CHORLEY | GLASGOW | GUILDFORD | LONDON | MANCHESTER | NEWCASTLE | SWINDON | PARIS