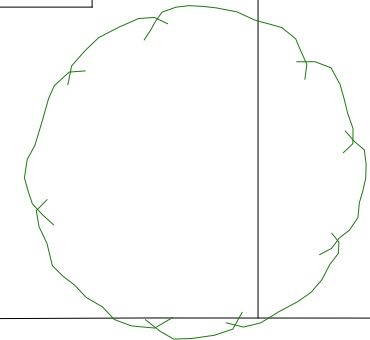
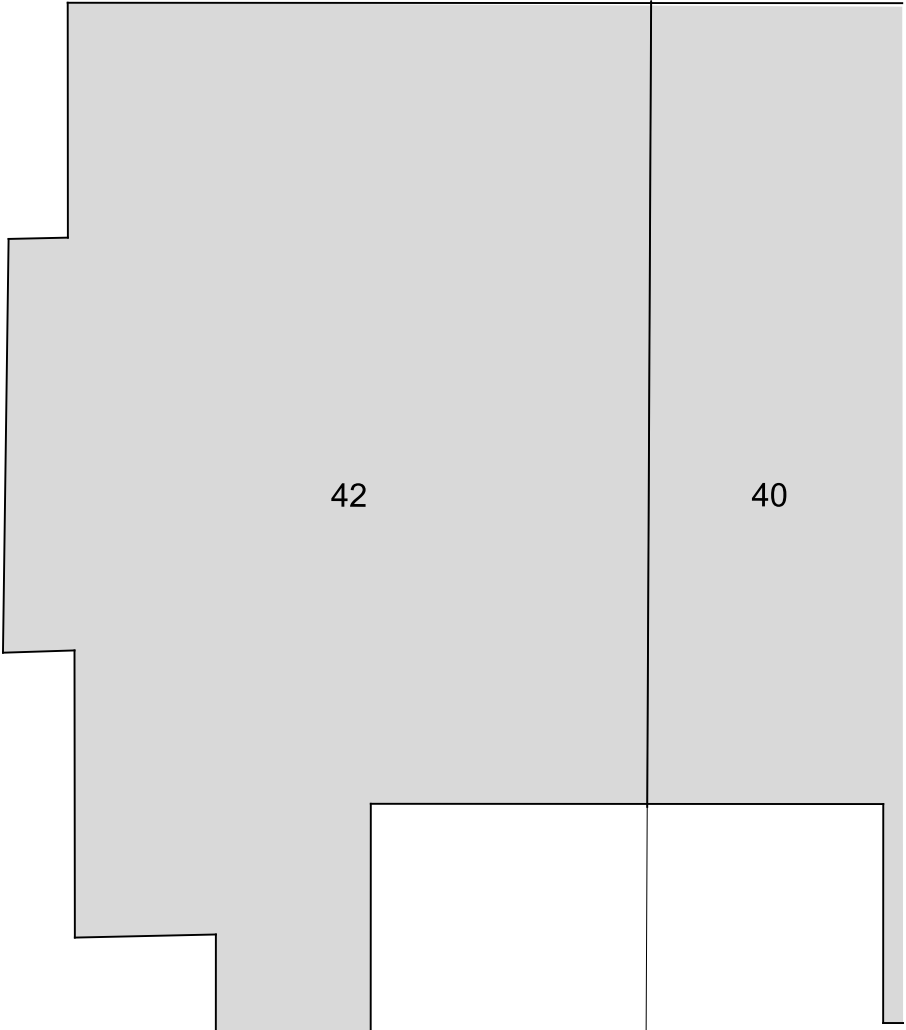
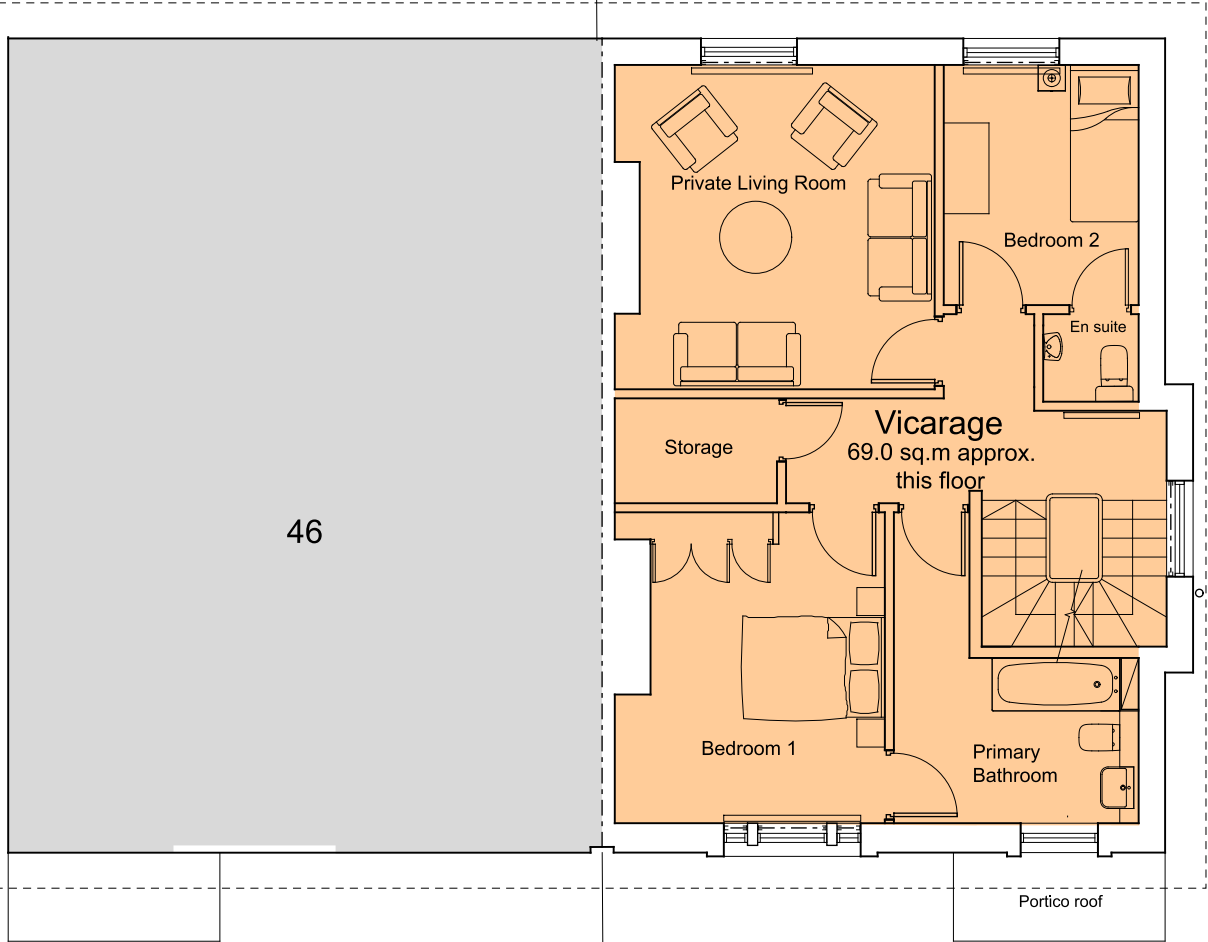
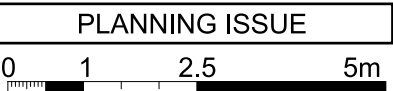


| | | | |
|--|---------------------|-----|----------|
| Dimensions are not to be scaled from this drawing. This drawing is based on current available information and should not be relied on as accurate measurements of usable space. This drawing is the property of the Colman Partnership Ltd, and Copyright is reserved by them. The drawing is issued on condition that it is not copied or disclosed by or to any unauthorised persons without the prior consent in writing of the Colman Partnership Ltd. | | | |
| Rev | Notes | By | Date |
| P1 | Issued for Planning | SRH | 14/07/23 |



King Henry's Road below



Project
44/44A King Henry's Road
London, NW3 3RP

Title
Proposed First Floor Plan

| | | |
|--------------------------------|------------------------|--------------------|
| Scale 1:100 @ A3 | 1:50 @ A1 | Date 10/02/2023 |
| Drawn by SRH | Checked by Proj. Arch. | Checked By Manager |
| Drawing No. 22027/P(--)-111 | Revision P1 | |

The Colman Partnership Limited
27 Harcourt Street
London
W1H 4HP

Telephone : 020 7535 2040
Facsimile : 020 7535 2041
email: projects@colmanarchitects.co.uk

www.colmanarchitects.co.uk

CAD Filename: SP1ES
SDATES