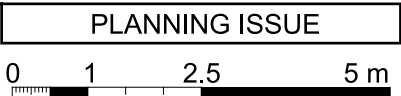
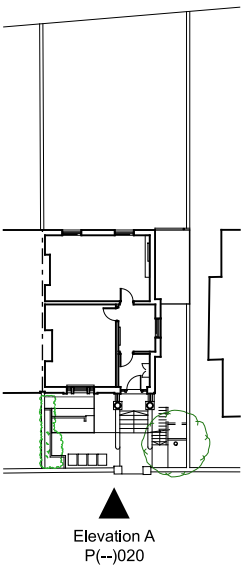


|  |                     |     |          |
|--|---------------------|-----|----------|
| Dimensions are not to be scaled from this drawing.<br>This drawing is based on current available information and should not be relied on as accurate measurements of usable space.<br>This drawing is the property of the Colman Partnership Ltd, and Copyright is reserved by them. The drawing is issued on condition that it is not copied or disclosed by or to any unauthorised persons without the prior consent in writing of the Colman Partnership Ltd. |                     |     |          |
| Rev  | Notes               | By  | Date     |
| P1   | Issued for Planning | SRH | 14/07/23 |



KEY PLAN:



Project

44/44A King Henry's Road  
London, NW3 3RP

Title

Existing Front Elevation  
facing King Henry's Road

|             |                |                        |                    |            |
|-------------|----------------|------------------------|--------------------|------------|
| Scale       | 1:100 @ A3     | 1:50 @ A1              | Date               | 10/02/2023 |
| Drawn by    | SRH            | Checked by Proj. Arch. | Checked By Manager |            |
| Drawing No. | 22027/P(--)020 | Revision               | P1                 |            |

The Colman Partnership Limited  
27 Harcourt Street  
London  
W1H 4HP

Telephone : 020 7535 2040  
Facsimile : 020 7535 2041  
email: projects@colmanarchitects.co.uk

www.colmanarchitects.co.uk