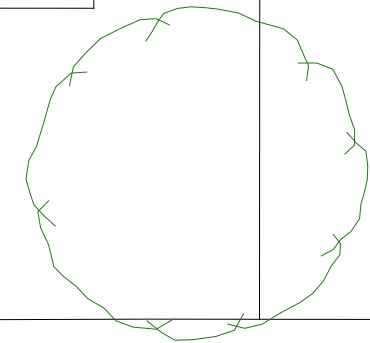
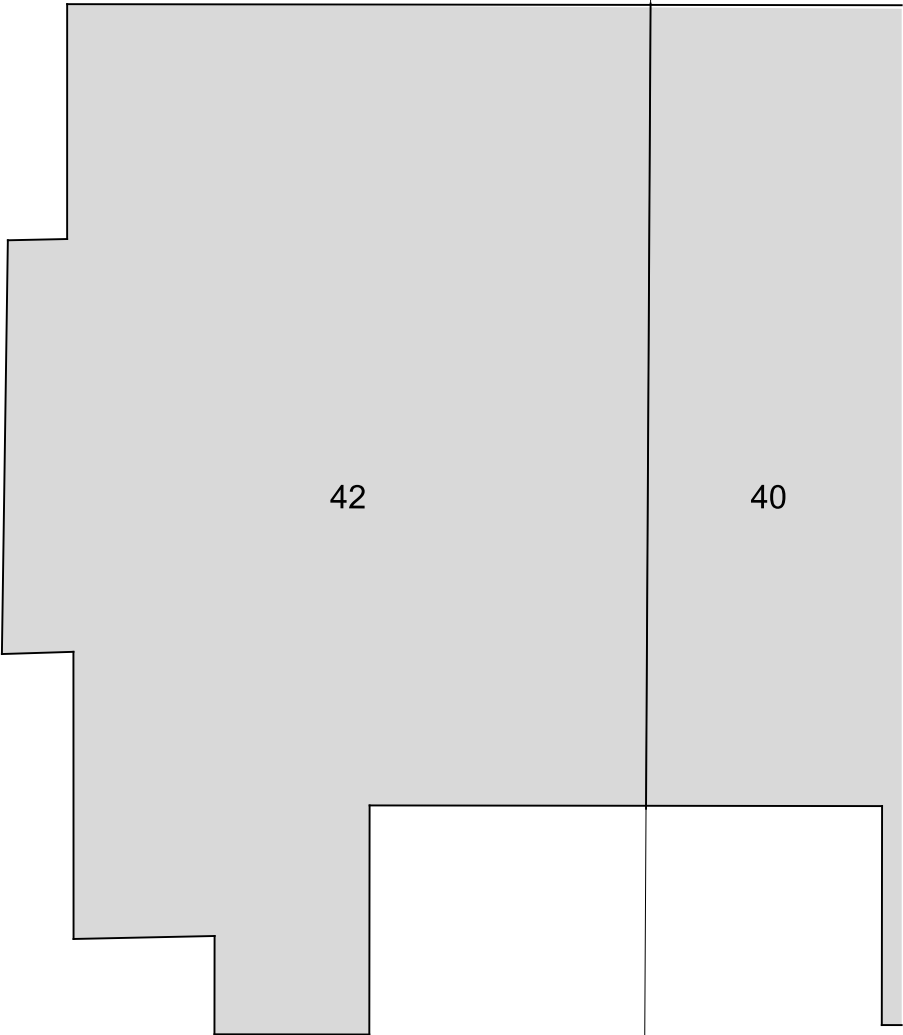
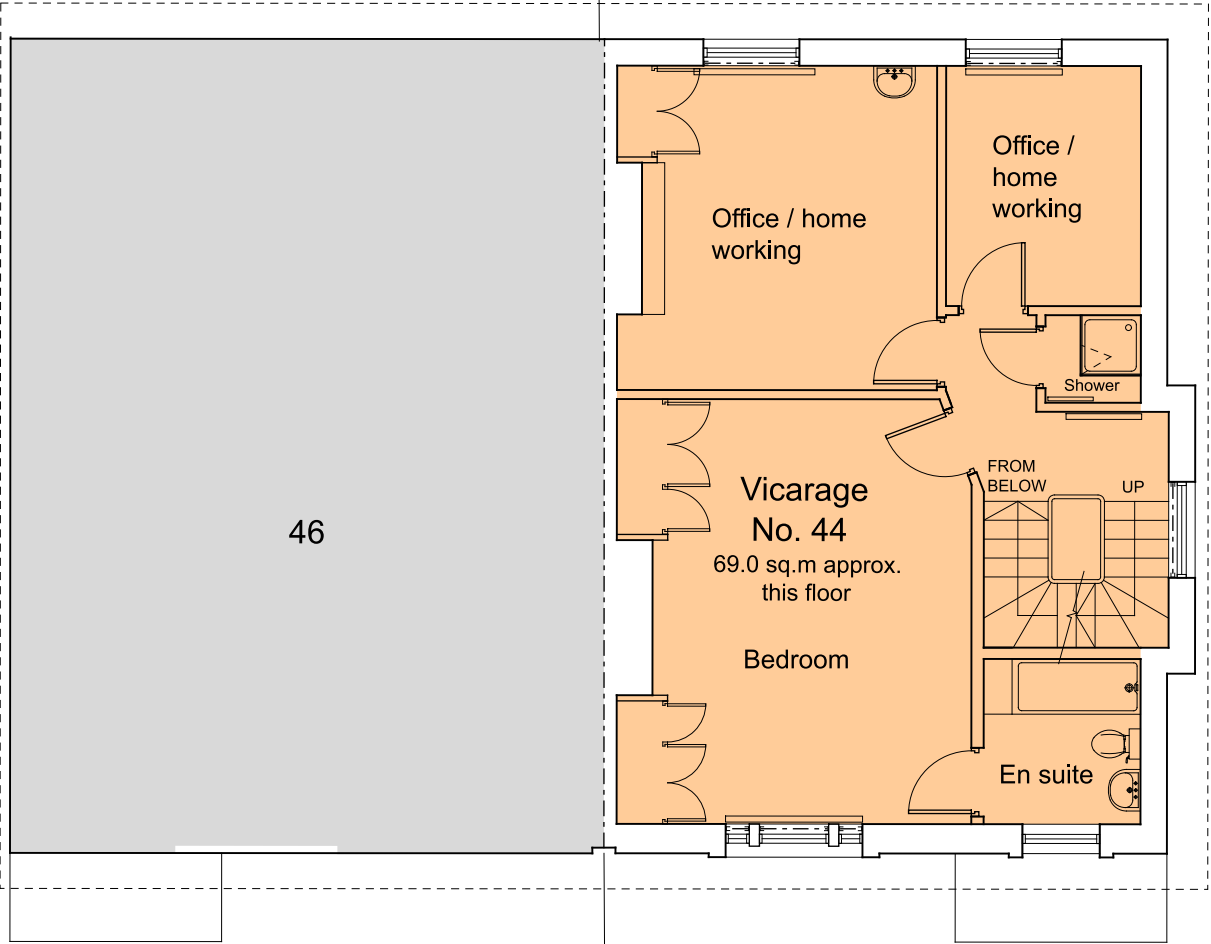
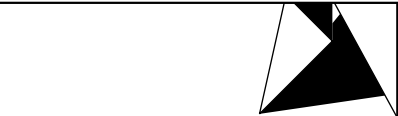
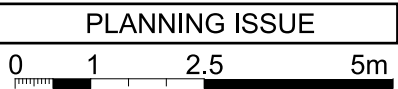


Dimensions are not to be scaled from this drawing. This drawing is based on current available information and should not be relied on as accurate measurements of usable space. This drawing is the property of the Colman Partnership Ltd, and Copyright is reserved by them. The drawing is issued on condition that it is not copied or disclosed by or to any unauthorised persons without the prior consent in writing of the Colman Partnership Ltd.			
Rev	Notes	By	Date
P1	Issued for Planning	SRH	14/07/23



King Henry's Road below



Project  
44/44A King Henry's Road  
London,NW3 3RP

Title  
Existing First Floor Plan

Scale 1:100 @ A3	1:50 @ A1	Date 10/02/2023
Drawn by SRH	Checked by Proj. Arch.	Checked By Manager
Drawing No. 22027/P(--)-011	Revision P1	