

NB: This Drawing is based on Drawing No. 20465-20-02 by Castle Surveys Ltd. Do not scale.

Existing Windows **WB03** & **WB04** to remain unchanged.

New plain simple section Portland stone surround with slate hearth to the rear dining room fireplace. (to match original precedents typically found in 18th Georgian domestic basements including reinstating exposed curved brickwork fireback)

Width of opening between kitchen and dining reduced to make clear distinction between the two spaces whilst maintaining visual connectivity. Drawn as bespoke joinery glazed cabinets (to allow glimpses and light to pass through) with paneled Bi-fold doors.

Modern kitchen units (design by others) fitted to existing grounds on original wall fabric. Kitchen services to be replaced in existing locations.

New ex54mm h/w outward opening door **nDB02**. 4 x No. panel arrangement to match existing door to be removed including top panels double glazed.

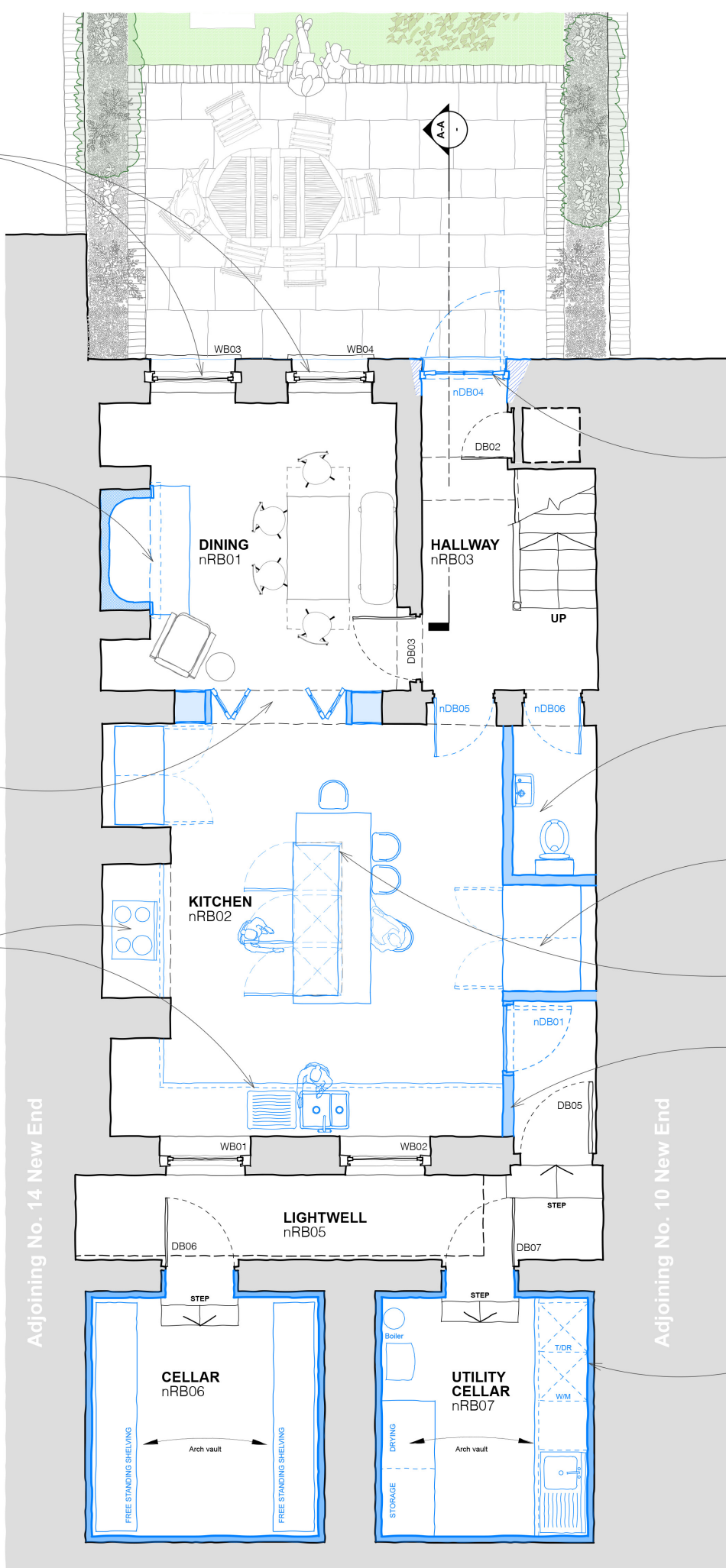
New toilet comprising timber studwork with plasterboard and skim finish built in line with lost original partition separating corridor and front room. New door **nDB06** to match **DB03**.

Full height concealed kitchen storage cupboard forming part of new kitchen design by others.

New island unit, (forming part of kitchen design by others) located centrally and free of either cooking point or sink to ensure location of existing services remain unaltered.

New timber studwork porch built in line with lost original partition separating corridor and front room. New door **nDB01** to be full height jib door.

Floors and walls of Storage Cellar and Utility Cellar to receive waterproof lining (highlighted in blue). Fitout design of cupboard and storage units shown by others.



Adjoining No. 14 New End

Adjoining No. 10 New End

Addition

**PROPOSED LOWER GROUND**  
(proposed alterations in blue)

0 1m 5m Scale 1:50

