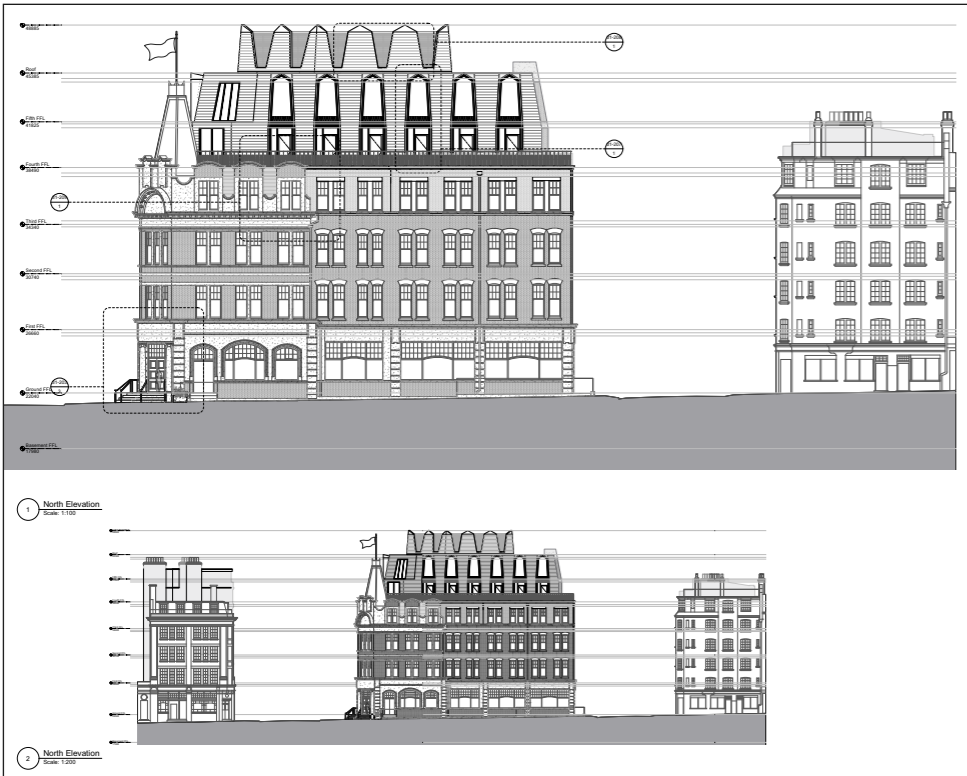


# Item 01 - GA Elevation update

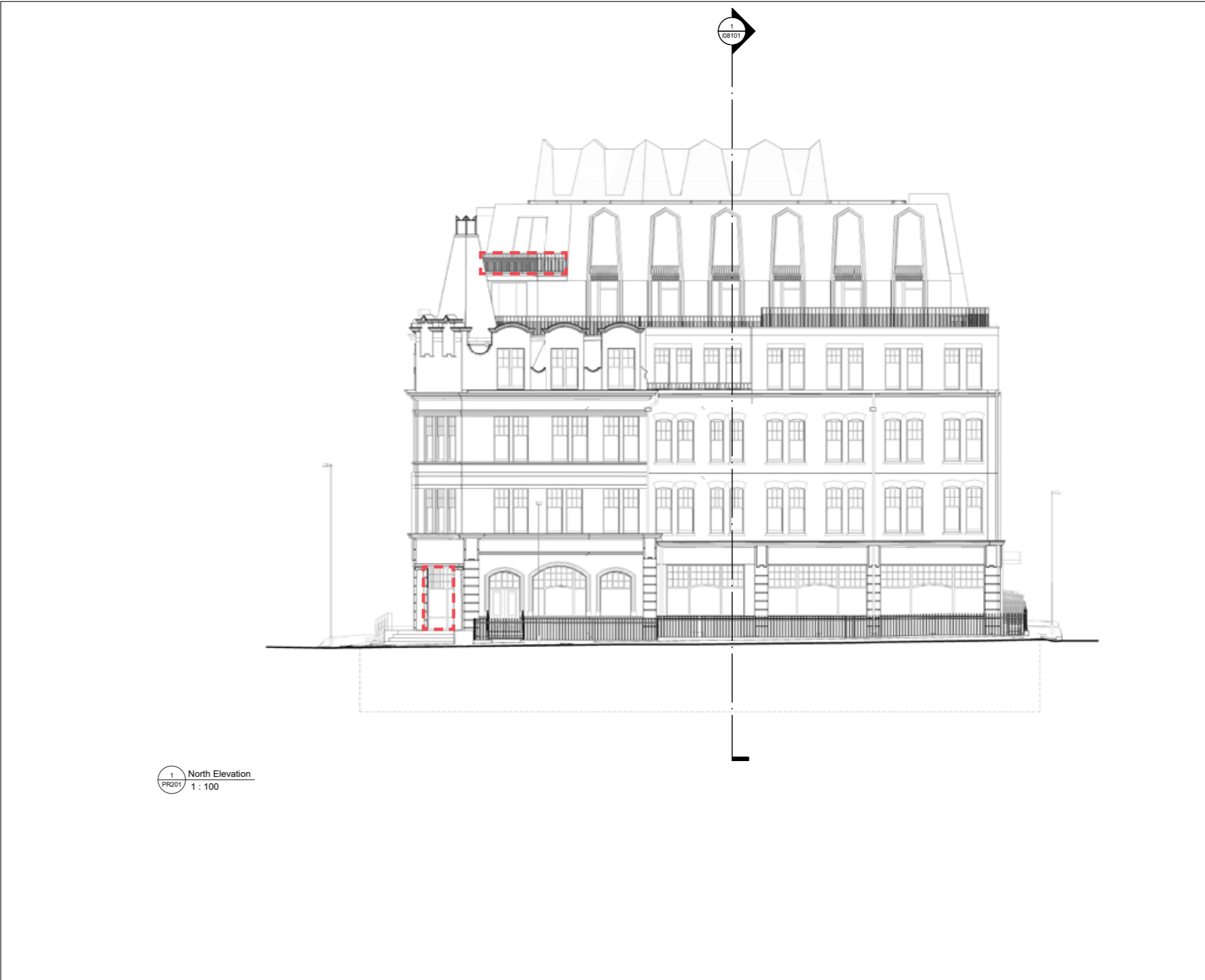
## NORTH ELEVATION UPDATE OVERVIEW

- + North East corner balustrade to flat roof
- + Omission of proposed new doors on ground floor at North East corner



Consented North Elevation

----- CHANGES SHOWN ON PROPOSED DRAWING



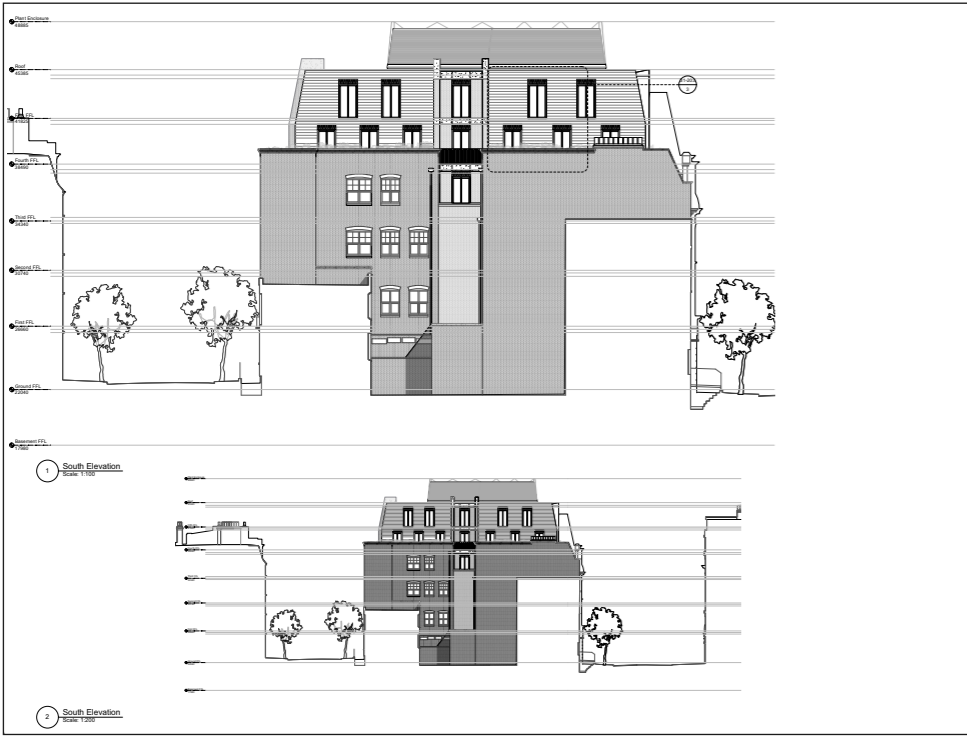
Updated North Elevation

# Item 01 - GA Elevation update

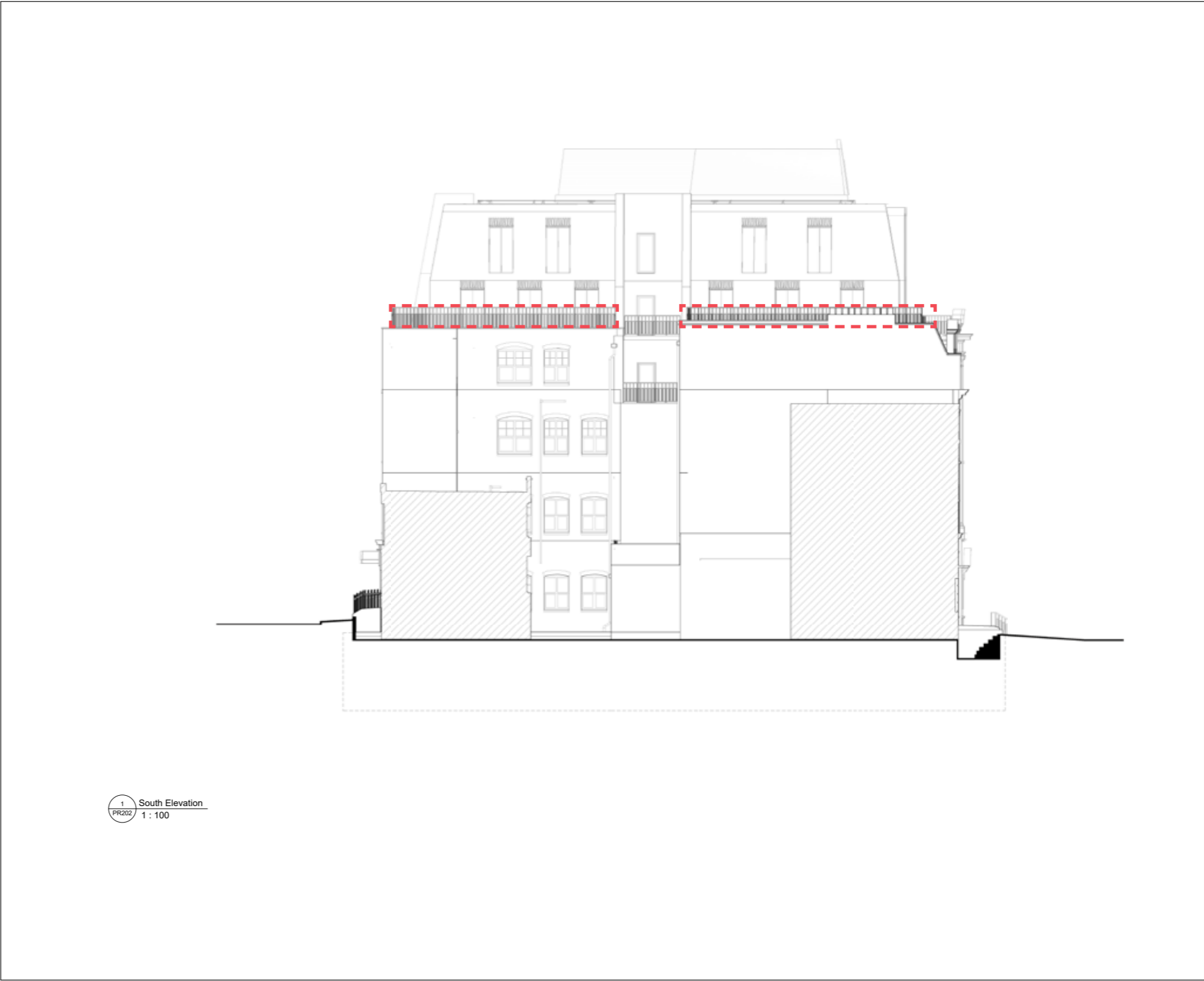
## SOUTH ELEVATION UPDATE OVERVIEW

- + Height of South elevations brick parapets rationalised
- + Existing South East corner chimney stack remains at existing level  
- previous intent to raise elevation omitted
- + Height of balustrades adjusted for edge protection compliance

----- CHANGES SHOWN ON PROPOSED DRAWING



Consented South Elevation



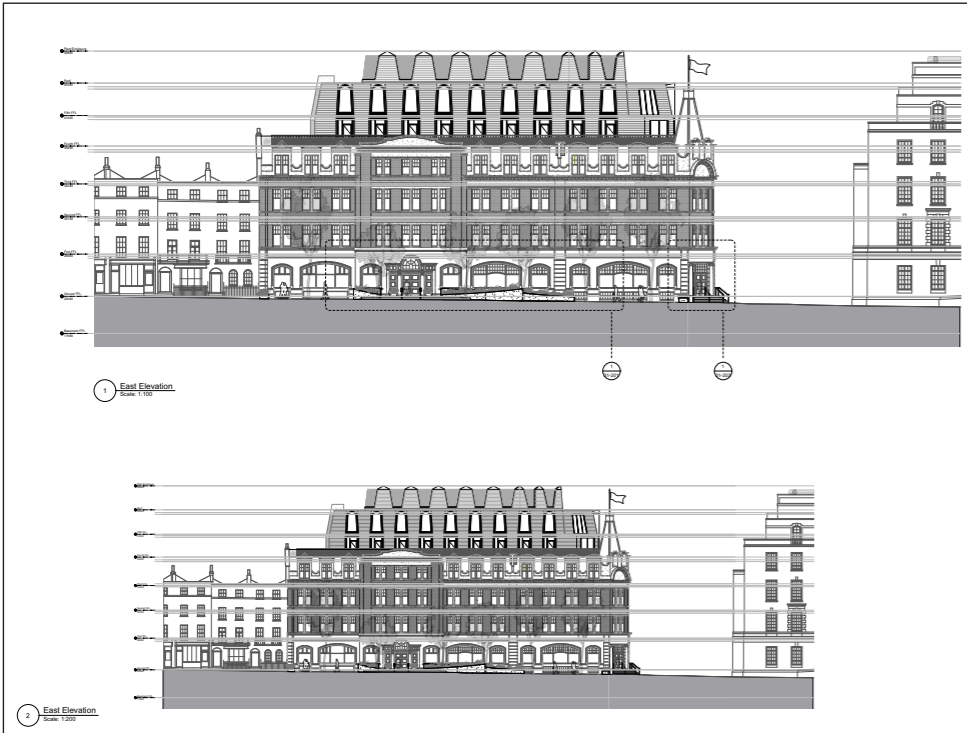
Updated South Elevation

# Item 01 - GA Elevation update

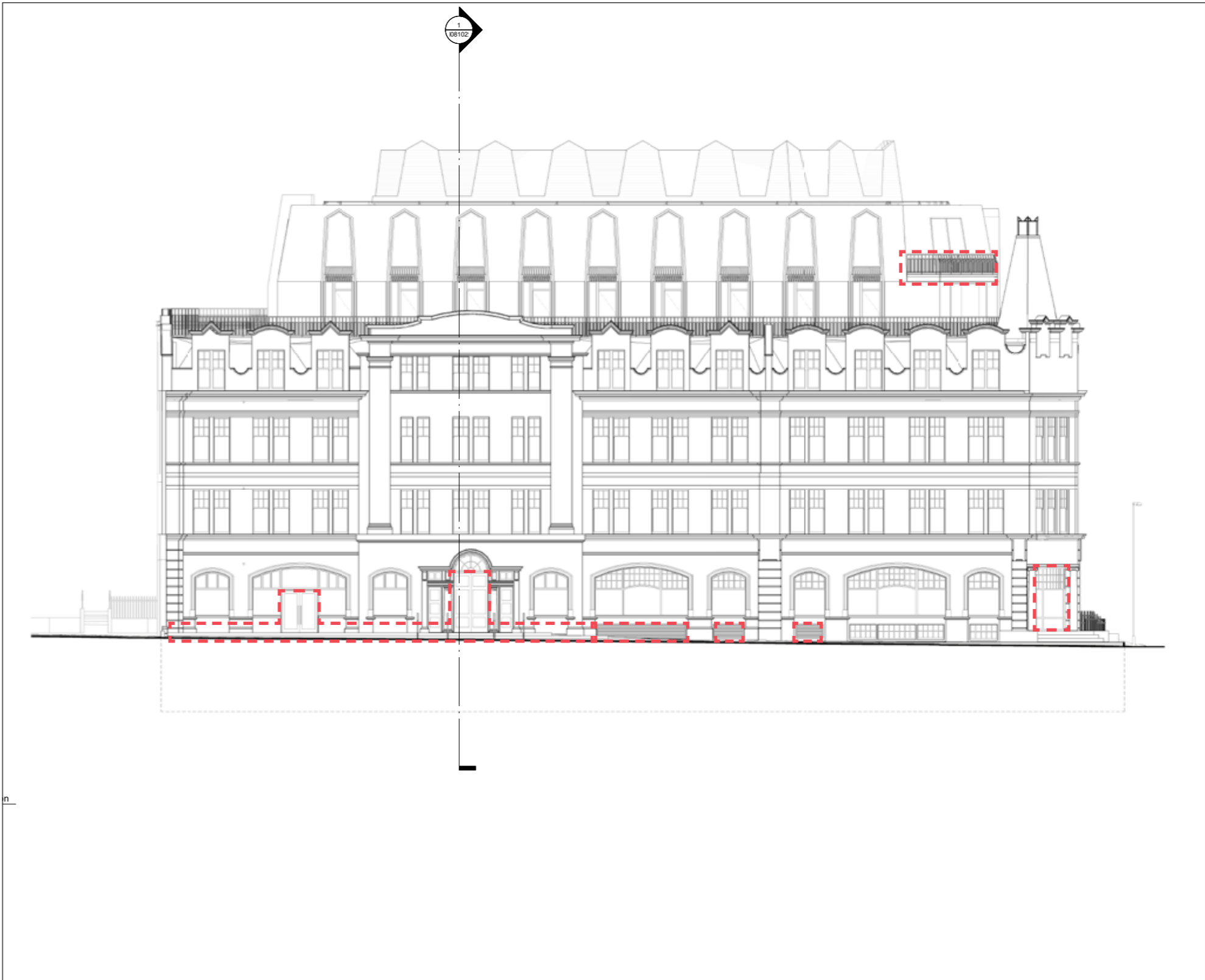
## EAST ELEVATION UPDATE OVERVIEW

- + North East corner balustrade to flat roof
- + Omission of proposed new doors on ground floor level at East corner
- + Extended main entrance plinth along South East elevation for improvement of accessibility for external cafe amenity
- + New low level louvres under 3 existing windows for basement services ductwork. Relocated from the reception facade.

----- CHANGES SHOWN ON PROPOSED DRAWING



Consented East Elevation

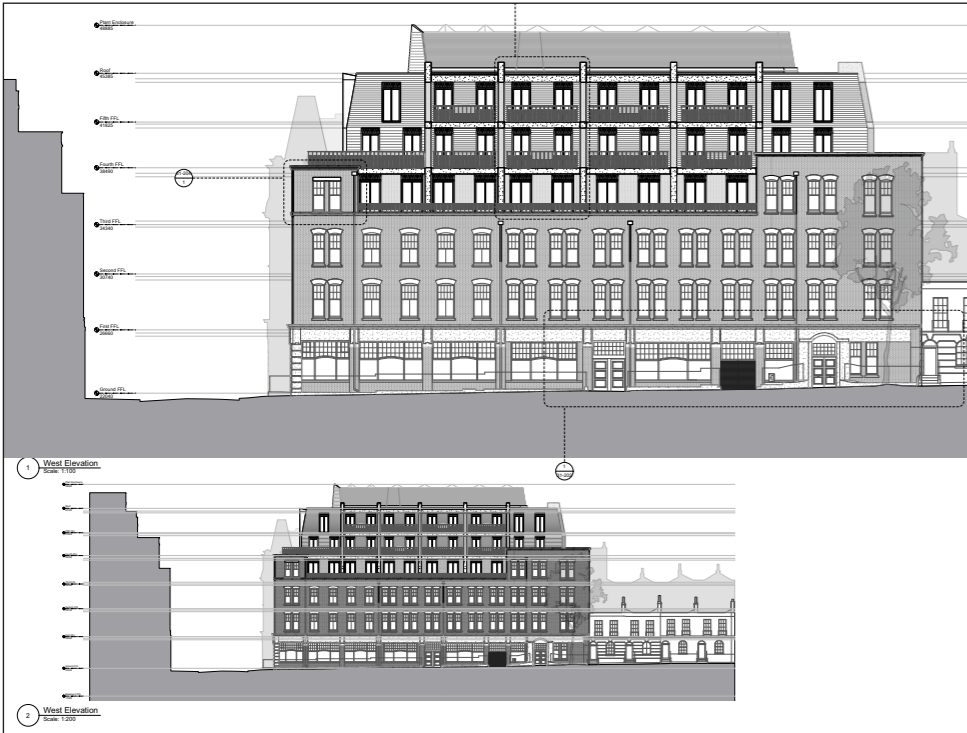


Updated East Elevation

# Item 01 - GA Elevation update

## WEST ELEVATION UPDATE OVERVIEW

- + Height of South and South West corner elevations brick parapets rationalised
- + Height of balustrades adjusted for edge protection compliance



Consented West Elevation

Stiff + Trevillion × 105 Judd Street Ltd

----- CHANGES SHOWN ON PROPOSED DRAWING

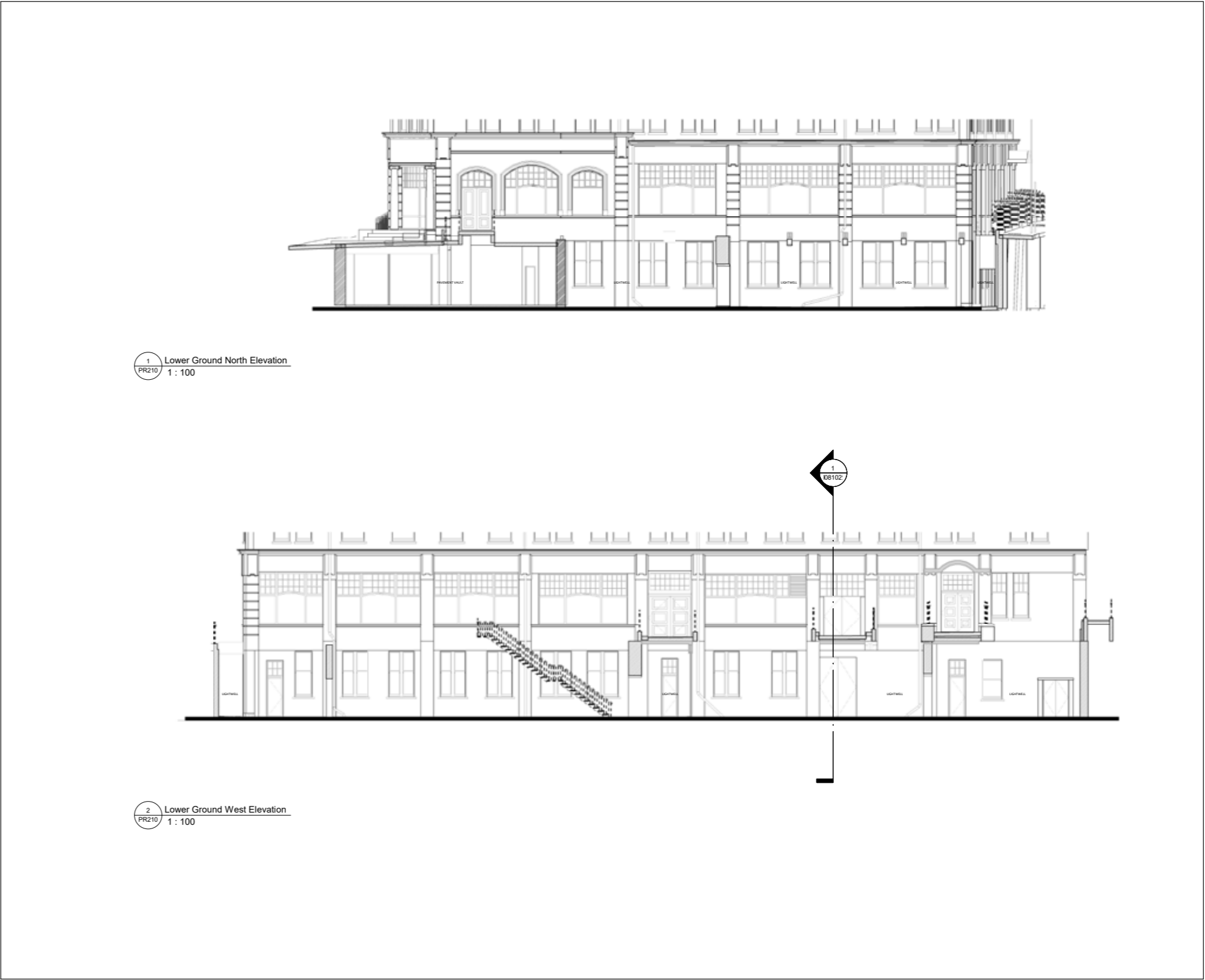


Updated West Elevation

Item 01 - GA Elevation update

ADDITIONAL NORTH & EAST LOWER GROUND FLOOR ELEVATIONS

- + Additional elevations provided for further clarity of arrangements in lower ground floor lightwell

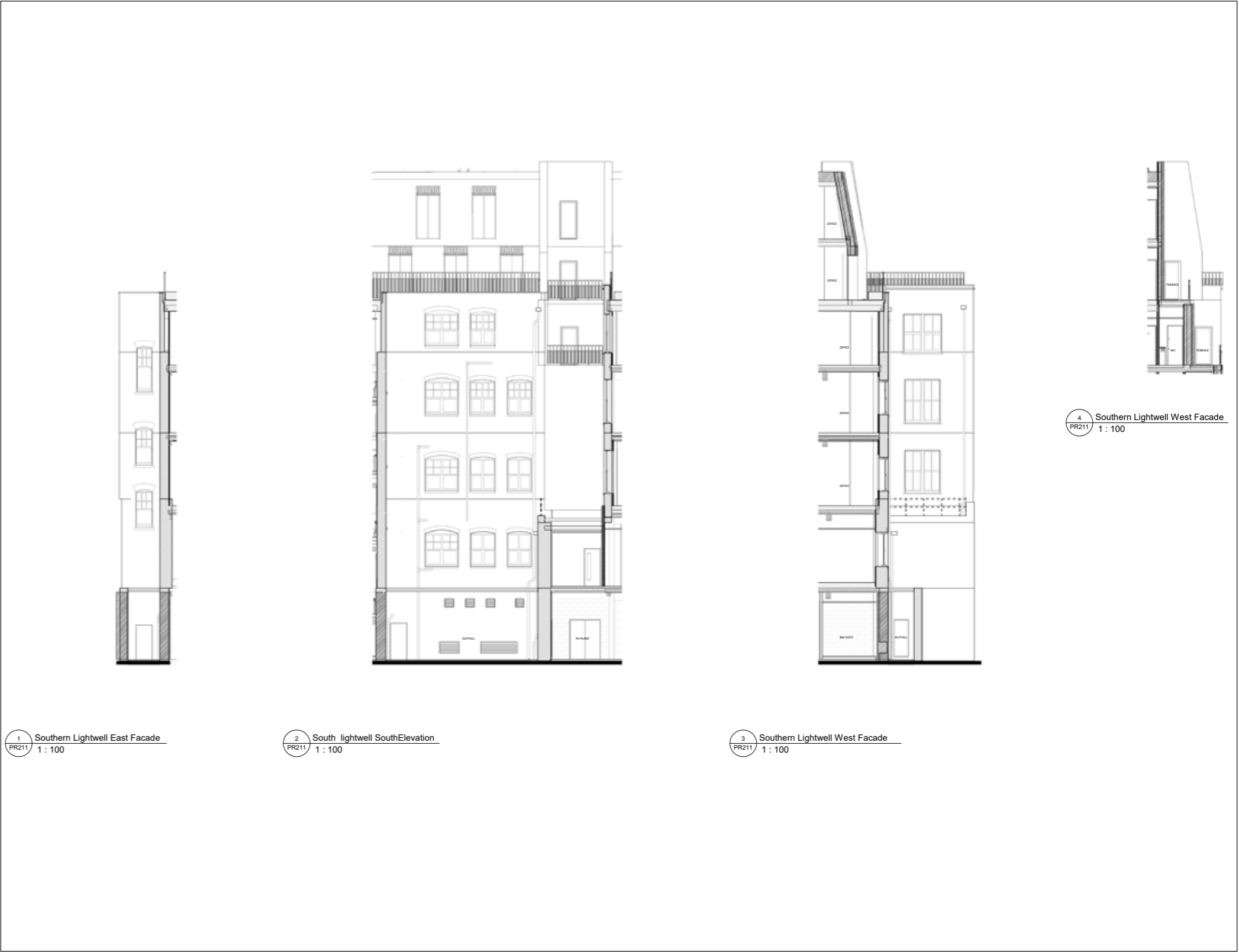
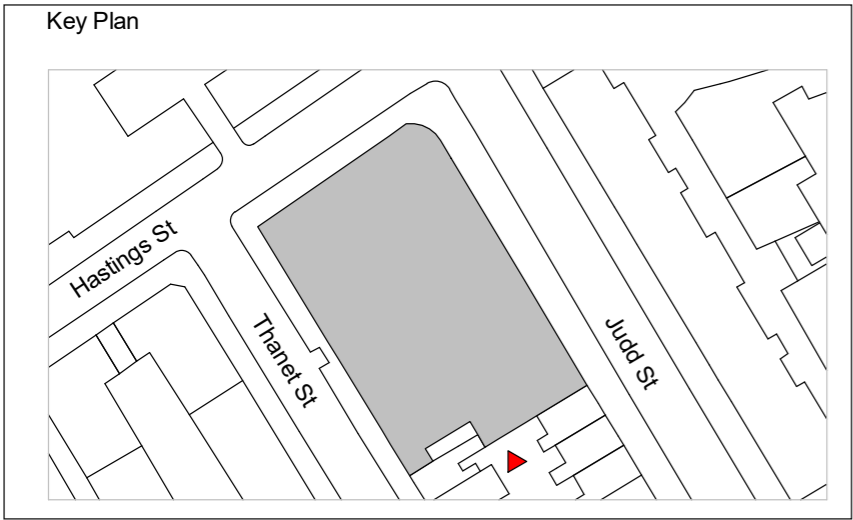


Additional Lower Ground Elevations

# Item 01 - GA Elevation update

## ADDITIONAL PARTIAL SOUTH ELEVATIONS

- + Additional partial elevations provided for further clarity of arrangements to flank walls where not visible in approved elevations & in Southern lightwell
- + See plans for elevation location references



Additional Southern Lightwell Elevations

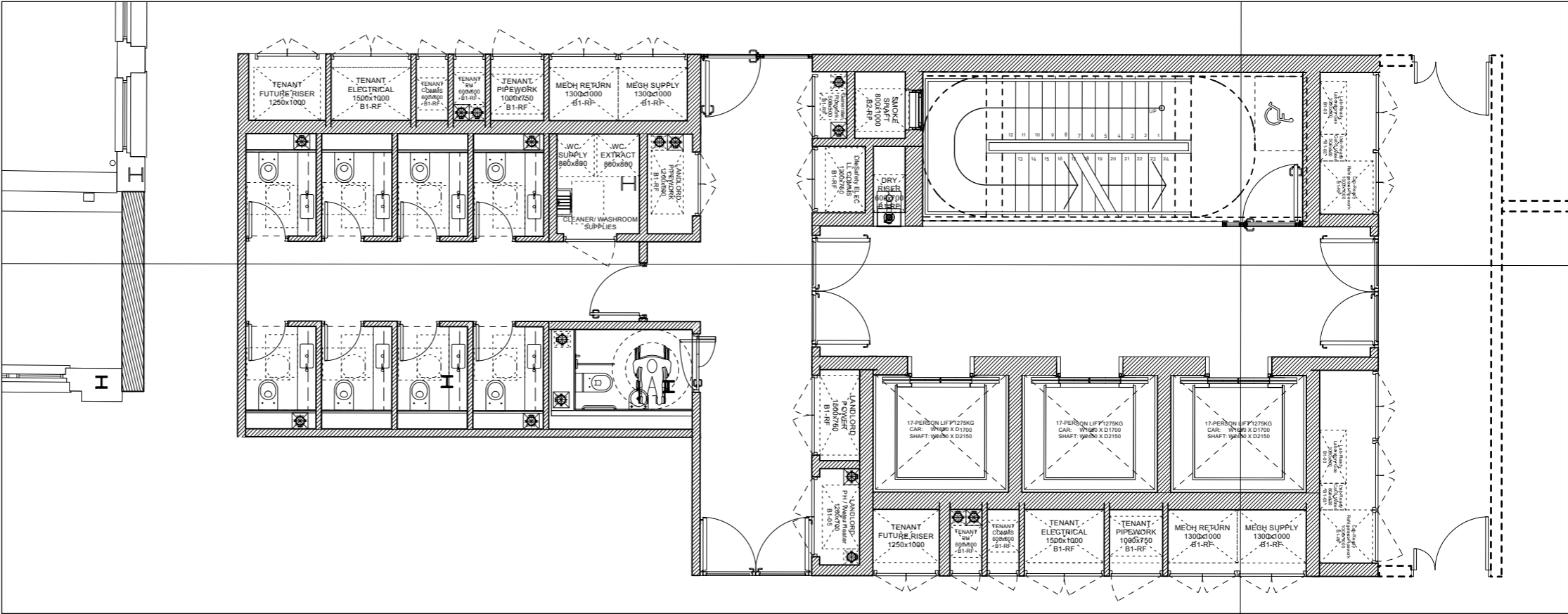


# Item 03 - Core Arrangement

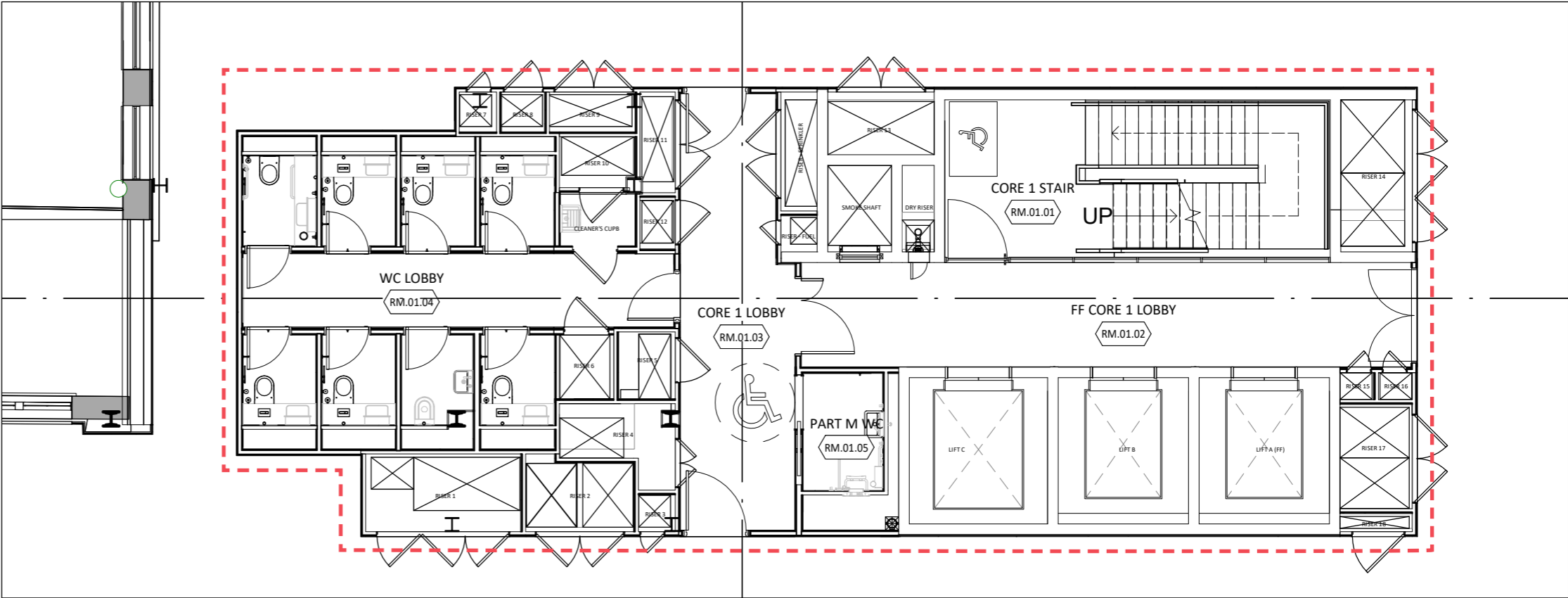
## DEVELOPMENT OF MAIN CORE ARRANGEMENT

- + Stair direction flipped to rationalise escape diagram
- + Risers arrangement & sizing adjusted to reflect detailed services design development
- + Lift shaft setting out adjusted to suit detailed lift design developed
- + WC arrangement developed for better accessibility and coordination with service riser layout

----- CHANGES SHOWN ON PROPOSED DRAWING



Approved Core Arrangement



Updated Core Arrangement

