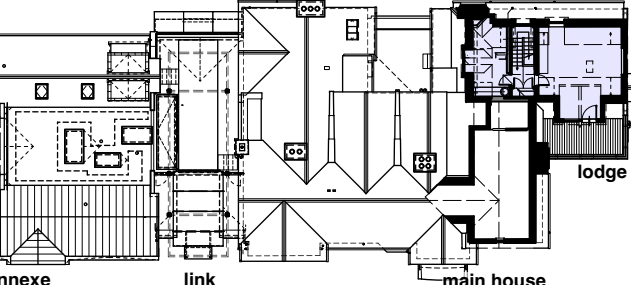


© BOWKER SADLER PARTNERSHIP LIMITED  
THIS DRAWING IS THE SUBJECT OF COPYRIGHT WHICH VESTS IN BOWKER SADLER PARTNERSHIP LIMITED. IT IS AN INFREINGEMENT OF COPYRIGHT TO REPRODUCE THIS DRAWING, BY WHATEVER MEANS, INCLUDING ELECTRONIC, WITHOUT THE EXPRESS WRITTEN CONSENT OF BOWKER SADLER PARTNERSHIP LIMITED WHICH RESERVES ALL ITS RIGHTS  
BOWKER SADLER PARTNERSHIP LIMITED ASSERTS ITS RIGHTS TO BE IDENTIFIED AS THE AUTHOR OF THIS DESIGN  
REPORT ERRORS & OMISSIONS TO ARCHITECT.  
CHECK ALL DIMENSIONS ON SITE.  
DRAWING TO BE READ IN CONJUNCTION WITH THE HEALTH AND SAFETY PLAN AND ALL RELEVANT RISK ASSESSMENTS

Survey drawings are kindly provided by Matcom Hughes Land Survey Ltd and are assumed to accurately describe the existing buildings, services and external spaces.

#### KEY



Existing Walls.  
New walls to be inserted.

#### Features

##### windows

- bhc bottom hung timber casement window
- thc top hung timber casement window
- shc side hung casement
- vss vertical sliding sash timber window
- fl fixed light timber window
- rlf roof light (flat roof)
- vrl valux style roof light (pitched roof)
- crf conservation style roof light (pitched roof)
- h ceiling hatch
- lf floor hatch
- sd sliding door
- sld sliding sliding door

##### ventilation and flues

- f wall / roof mounted flue to gas boiler / gas fire, terminal colour is black
- ab1 air brick wall terminal as extract to bathrooms, kitchens etc, annexe only, standard W28 weather bux, various sizes, in powder coated aluminium, colour to suit brickwork
- ab2 air brick wall terminal as extract to bathrooms, kitchens etc, main house and ridge, 225x225mm bespoke 19 and miss vent with vertical slots in powder coated aluminium, colour is black as ab2, with flyscreen removed for greater ventilation rate
- ab3 re-use existing terracotta airbrick
- vt low profile ventilated roof tile, colour and size matched to existing
- vth hooded ventilated roof tile, colour and size matched to existing
- vs ventilation stack, black
- svs ventilation stack, polished stainless steel

##### drainage services and landscape

- mh Existing manhole
- ic Existing inspection chamber
- wic Existing water service inspection chamber

##### FWIC 01

- four Inspection chamber collecting foul water drainage
- syp Soil vent pipe and underground foul water drainage
- four Waste pipe from washbasin/shower to foul water drainage
- four Rainwater pipe, gully and underground surface water drainage
- four Rainwater hopper draining into rainwater hopper
- wp Rainwater spout
- e Rainwater outlet

##### mechanical: heating

- gas fired boiler and wall mounted flue
- unvented cylinder

REV F1 19 Jul 2023 GMcG  
Minor Material Amendment Application to include dormer structures at the rear of the annexe is added to this drawing

REV F 09 Mar 2022 GMcG  
The previously approved scheme (scheme 2) is altered to include a number of minor, non material amendments. The amendments included mostly rationalise the alterations at Rev E

REV E 06 Sep 2021 GMcG  
The previously approved scheme (scheme 2) is altered to include a number of small amendments.

##### REV D

15th Dec

REV C 15 Jan 2021 GMcG  
Planning Application further revised, in response to planning and conservation officers comments

REV B 10 Aug 2020 GMcG  
Revised Planning Application marked at Revision B

REV A 05 Dec 2019 GMcG  
Original Planning Application marked at Revision A

REV / DATE ORN CHKD

PROJECT  
**The Hoo, Scheme 3**  
**17 Lyndhurst Gardens,**  
**Hampstead, London**  
Returning A Grand Victorian House to Private Domestic Accommodation NW3 5NU

CLIENT  
**Mr and Mrs Yu**  
REPRESENTED BY  
**JAGA Developments (London)**

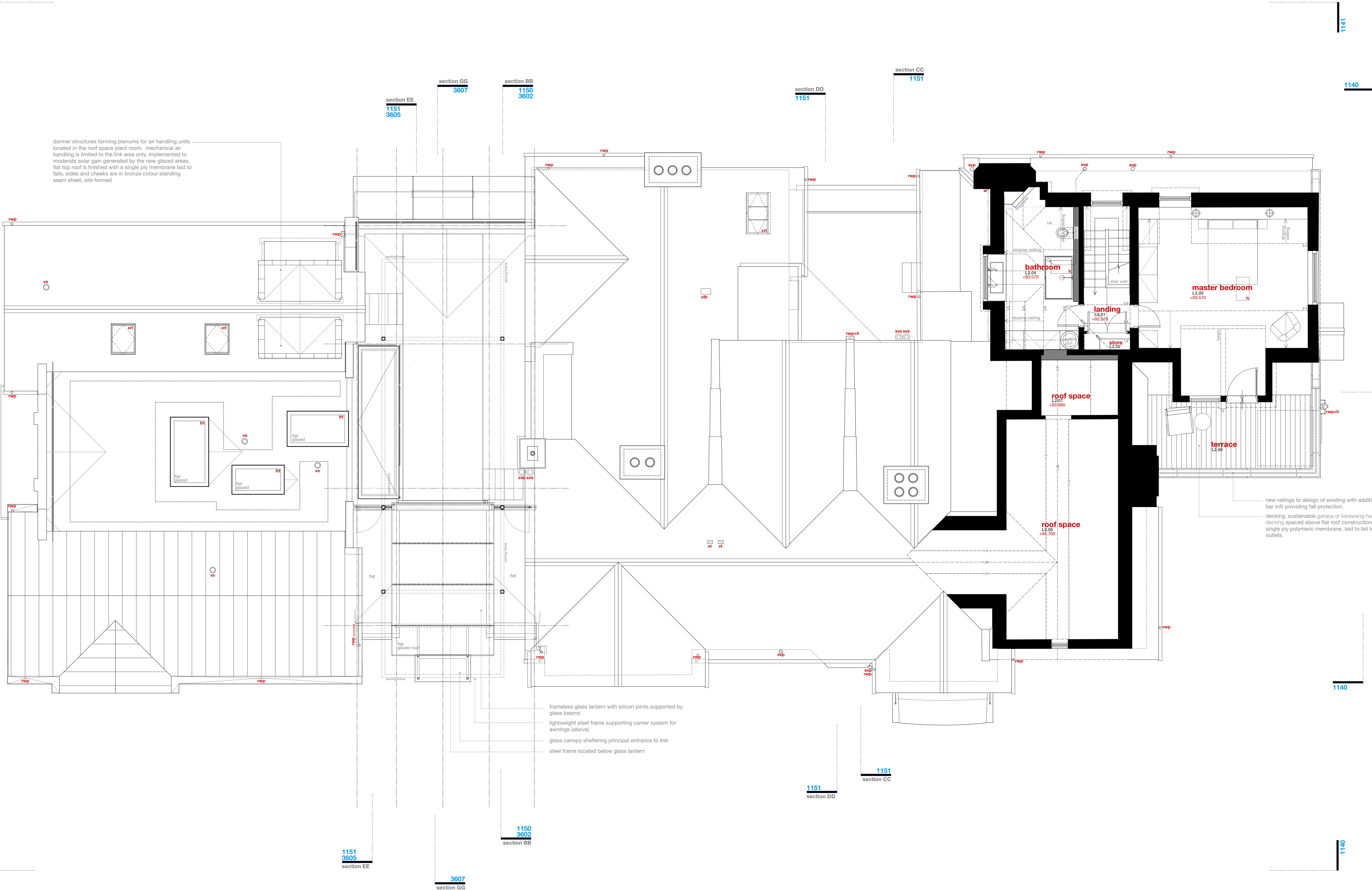
DRAWING  
**Second Floor Layout**  
**as Proposed**

SCALE SHEET SIZE DRAWN CHECKED DATE  
1:50 A0 GMcG May 2020

#### BOWKER SADLER ARCHITECTURE

A: Hatfield House, Hatfield, Hertfordshire, Stockport SK9 3DY  
T: 0161 406 7333  
E: info@bowker-sadler.co.uk  
W: www.bowker-sadler.co.uk

JOB No: **19013** DRAWING No: **1123** REVISION: **F1**  
STATUS: **PLANNING**



dormer structures forming plenums for air handling units located in the roof space plant room. mechanical air handling is limited to the link area only, implemented to moderate solar gain generated by the new glazed areas. flat top roof is finished with a single ply membrane laid to falls, sides and cheeks are in bronze colour standing seam sheet, site formed

frameless glass lantern with silicon joints supported by glass beams  
lightweight steel frame supporting carrier system for awnings (above)  
glass canopy sheltering principal entrance to link  
steel frame located below glass lantern

new railings to design of existing with additional vertical bar infill providing fall protection.  
decking: sustainable garapa or kerawang hardwood  
cladding spaced above flat roof construction. renew felt single ply polymeric membrane, laid to fall to existing outlets.