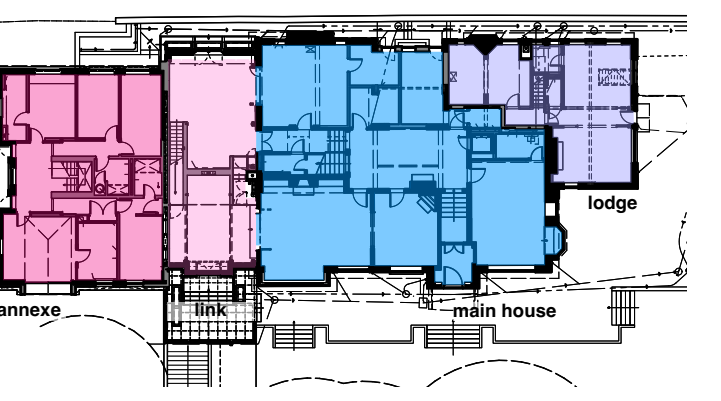
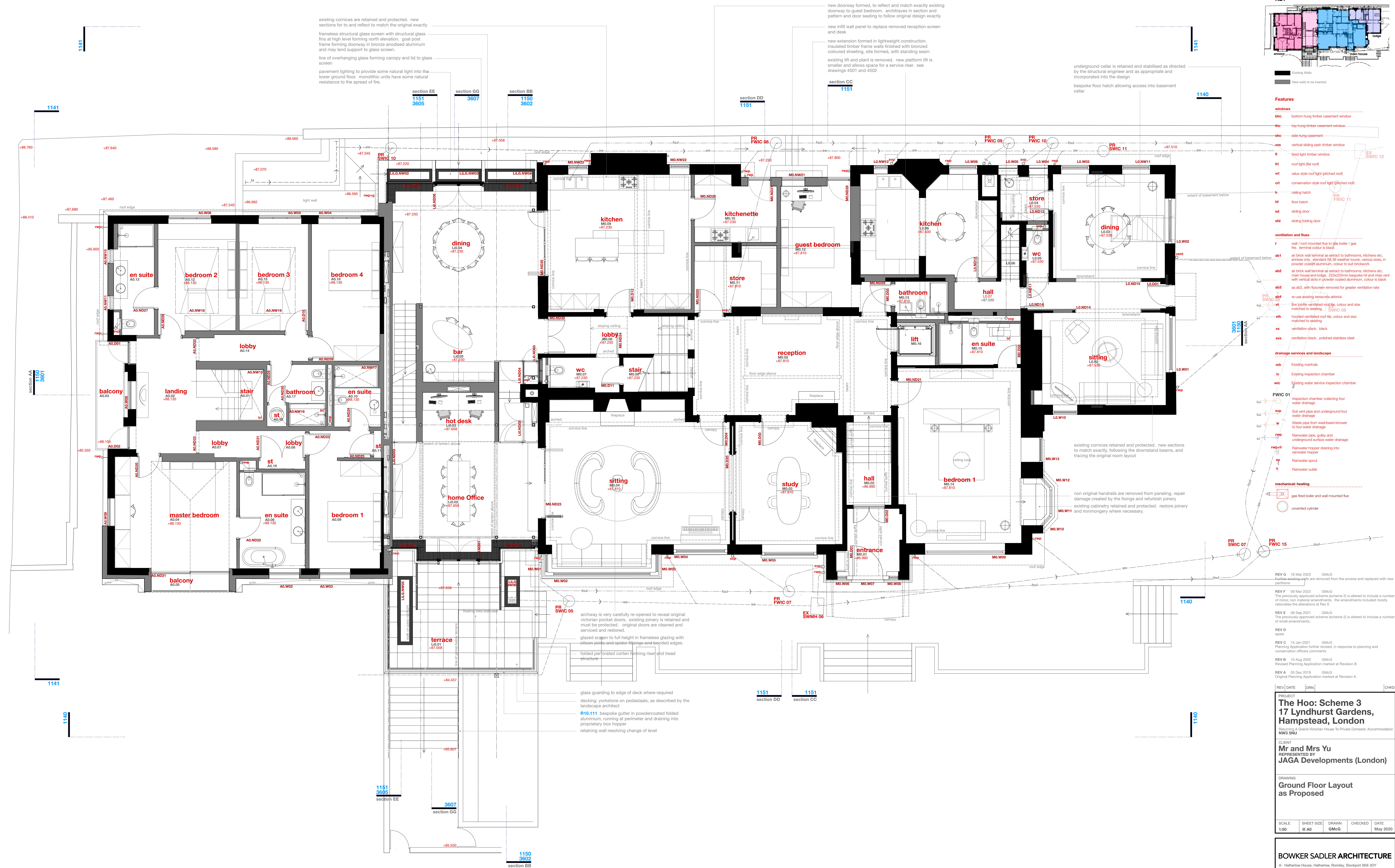


KEY



Features

- windows**
- bhc bottom hung timber casement window
  - thc top hung timber casement window
  - shc side hung casement
  - vss vertical sliding sash timber window
  - fl fixed light timber window
  - rl roof light (flat roof)
  - vtl velux style roof light (pitched roof)
  - crf conservation style roof light (pitched roof)
  - h ceiling hatch
  - hf floor hatch
  - sd sliding door
  - sld sliding folding door
- ventilation and flues**
- f wall / roof mounted flue to gas boiler / gas fire, terminal colour is black
  - ab1 air brick wall terminal as extract to bathrooms, kitchens etc, pressure only, standard VLSB weather louvre, various sizes, in powder coated aluminium, colour to suit brickwork
  - ab2 air brick wall terminal as extract to bathrooms, kitchens etc, main house and lodge, 225x225mm bespoke fit and mesh vent with vertical slots in powder coated aluminium, colour is black as ab2, with flyscreen removed for greater ventilation rate
  - re-use existing vermiculite airbrick
  - ab4 low profile ventilated roof tile, colour and size matched to existing SWIC 08
  - vh hooded ventilated roof tile, colour and size matched to existing
  - vt ventilation stack, black
  - svs ventilation stack, polished stainless steel
- drainage services and landscape**
- mh Existing manhole
  - ic Existing inspection chamber
  - wic Existing water service inspection chamber
- FWIC 01**
- ic inspection chamber collecting foul water
  - wp soil vent pipe and underground foul water drainage
  - wp waste pipe from washbasin/shower to foul water drainage
  - wp rainwater pipe, gully and underground surface water drainage
  - wp+h rainwater hopper draining into rainwater hopper
  - sp rainwater spout
  - o rainwater outlet
- mechanical heating**
- g gas fired boiler and wall mounted flue
  - u unvented cylinder



- REV G 16 Mar 2023 GM&G  
Full wall endpapers are removed from the annex and replaced with new partitions
- REV F 09 Mar 2022 GM&G  
The previously approved scheme (scheme 2) is altered to include a number of minor, non material amendments, the amendments included mostly relative to the alterations at Rev E
- REV E 05 Sep 2021 GM&G  
The previously approved scheme (scheme 2) is altered to include a number of small amendments.
- REV D none
- REV C 15 Jan 2021 GM&G  
Planning Application further revised, in response to planning and conservation officers comments
- REV B 10 Aug 2020 GM&G  
Revised Planning Application marked at Revision B
- REV A 05 Dec 2019 GM&G  
Original Planning Application marked at Revision A

REV DATE DRN CHG

PROJECT  
**The Hoo: Scheme 3**  
**17 Lyndhurst Gardens,**  
**Hampstead, London**  
Returning A Grand Victorian House To Private Domestic Accommodation  
NW3 3NU

CLIENT  
**Mr and Mrs Yu**  
REPRESENTED BY  
**JAGA Developments (London)**

DRAWING  
**Ground Floor Layout**  
**as Proposed**

SCALE SHEET SIZE DRAWN CHECKED DATE  
1:50 @ A0 GM&G May 2020

**BOWKER SADLER ARCHITECTURE**  
A: Hatherlow House, Hatherlow, Romley, Stockport SK6 3DY  
T: 0161 406 7333  
E: hsd@bowker-sadler.co.uk  
W: www.bowker-sadler.co.uk

JOB No. **19013** DRAWING No. **1121** REVISION **G**  
STATUS  
PLANNING