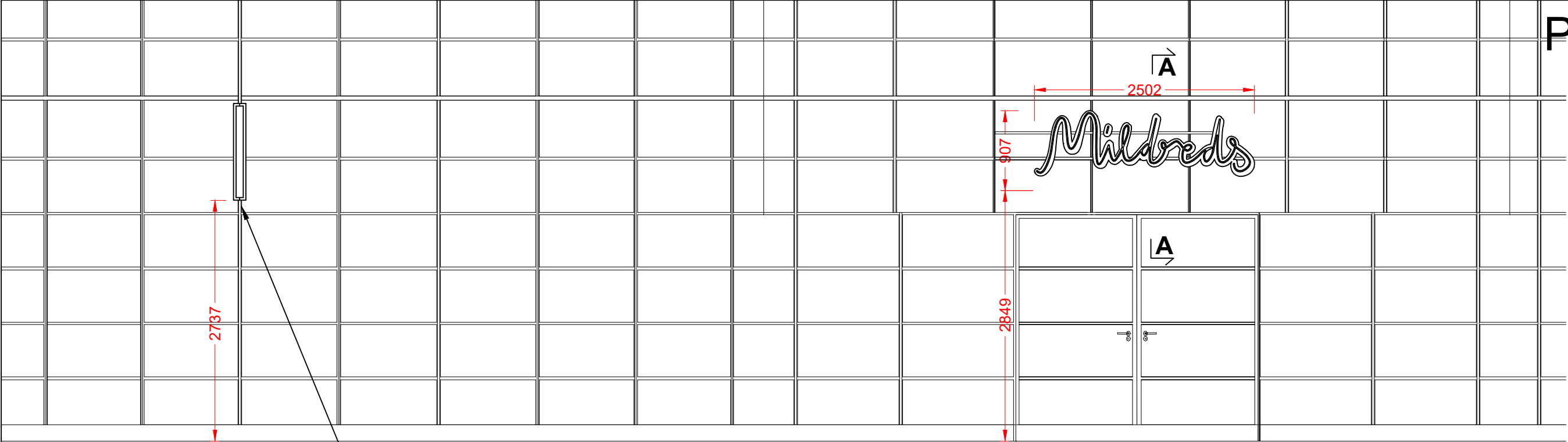
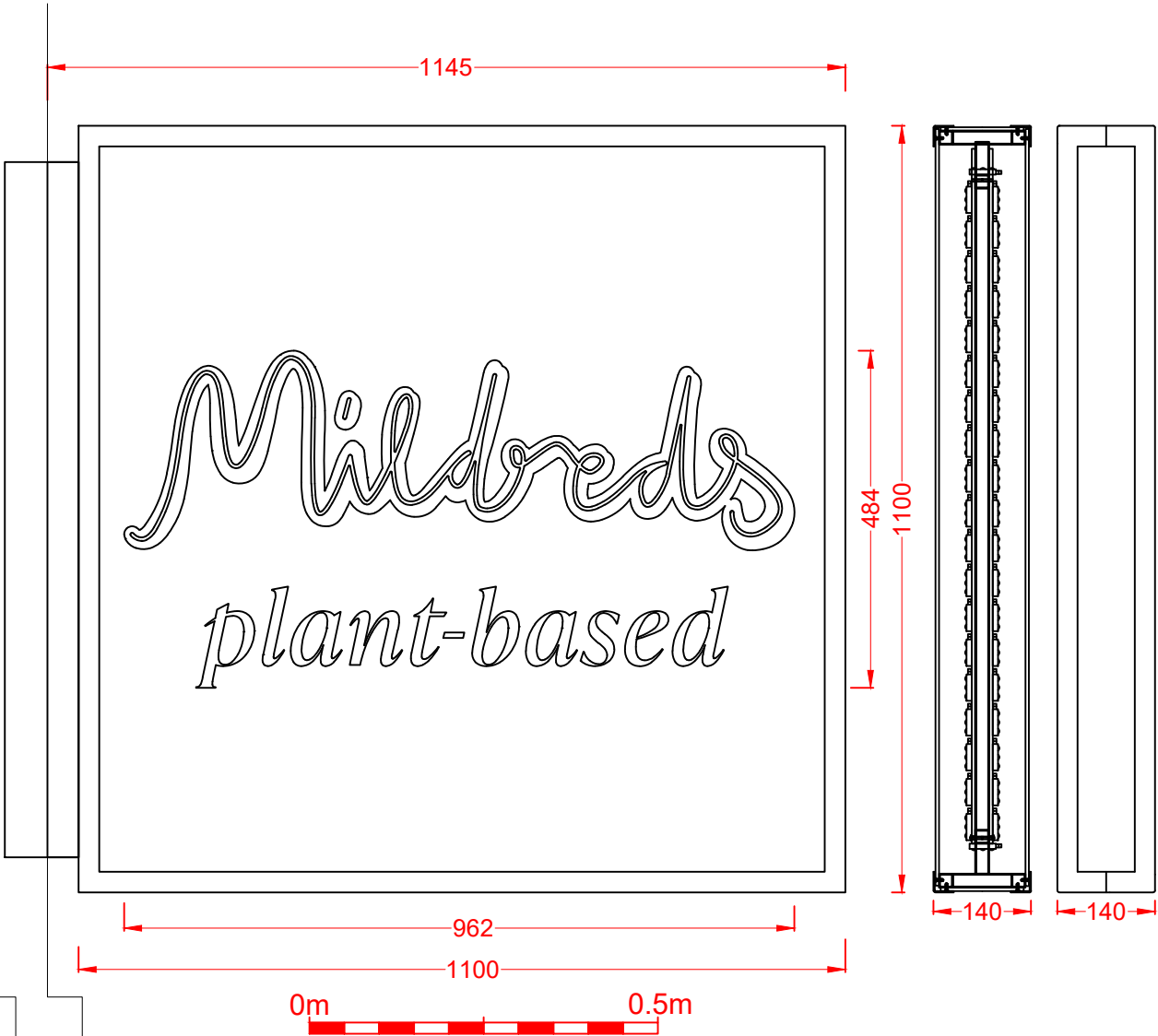


Proposed

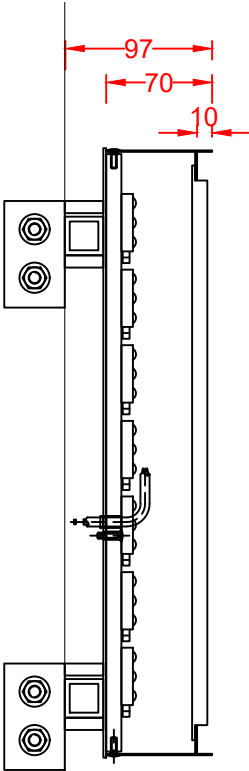


projected sign position

**Front Elevation**  
Scale 1:50



Projecting Sign - 1 off  
Scale 1:10  
A white 20x20mm SHS steel lattice has 5mm opal acrylic faces fixed to it to give illuminated faces on all the outer sides of the sign. Folded and welded 1.2mm descaled stainless rims are finished white and are fixed over the edges. Dark blue opaque vinyl is applied to the two main faces with the 'Mildreds' text having a centre line cut out. Acrylic faces are internally illuminated by low energy cool white LEDs. Inner frame clamp fixes around the vertical window mullion.

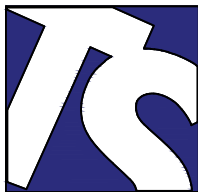


Section A-A through the text  
Scale 1:5  
Built-up 'Mildreds' letters have 1.2mm descaled stainless steel faces and returns finished dark blue, with the faces set back within the returns for an open-trough appearance. Fret cut lines in the face are fitted with push through 10mm opal 030 acrylic which is face illuminated by low energy blue LEDs fitted to the letter backs. Backs screw fix to 25x25mm aluminium rails finished to match the building behind and fixed to the mullions.



A Design altered

18/07/23



**Technical Signs**  
Floor 1 - Unit 3  
Hille Business Centre  
132 St Albans Road  
Watford, Herts, WD24 4AE  
Tel: 01923 811999  
Fax: 01923 811998  
E-mail: info@technicalsigns.co.uk

Client Mildreds		
Address/Job details		
9-11 Jamestown Rd Camden NW1 7BW		
Proposed Signage		
Job No -		
Drawn by DN	Date 07/07/23	
Scale As specified (A3)	Drawing No 596781-2	Rev