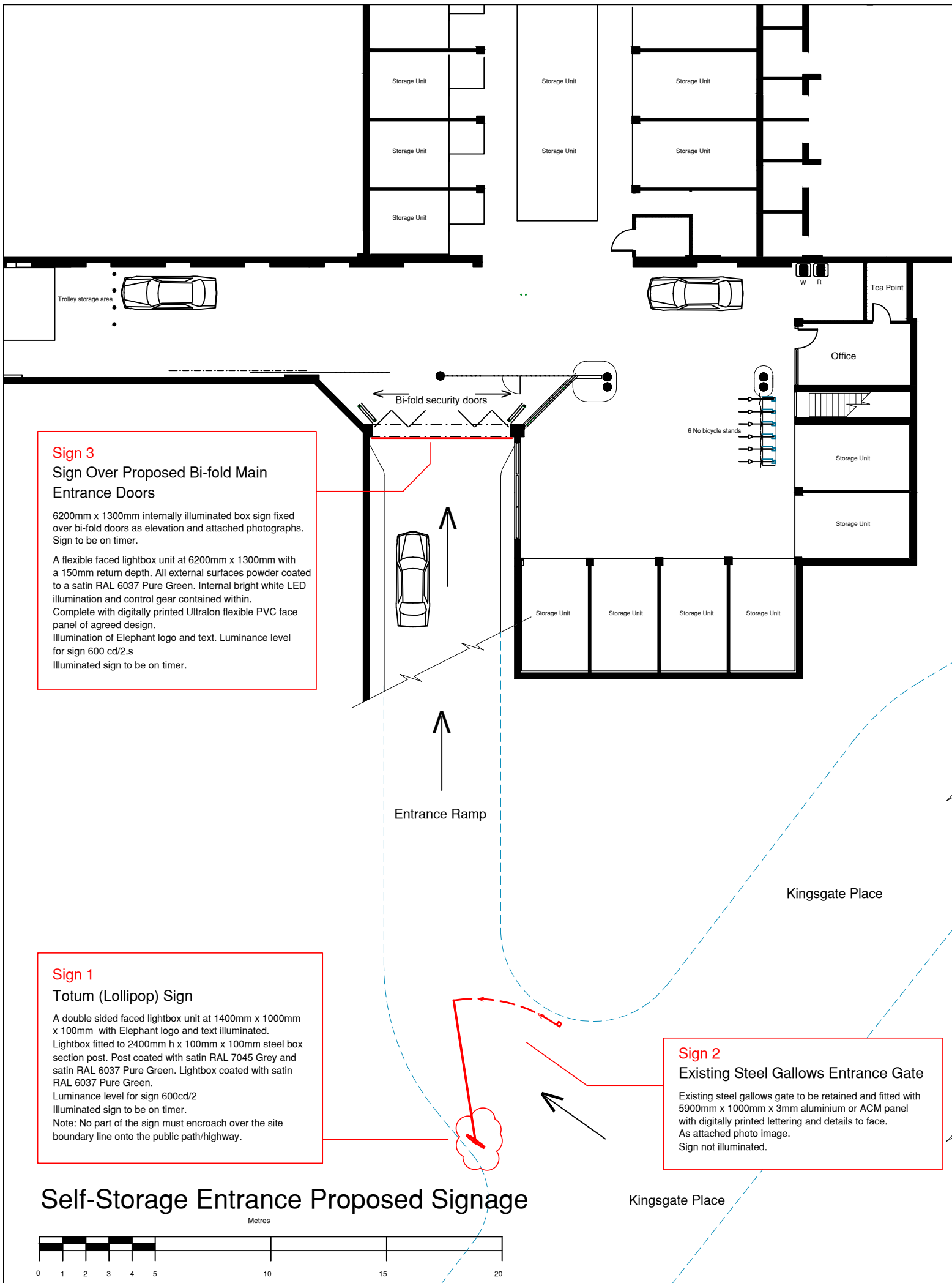


# 002

Planning Drawings

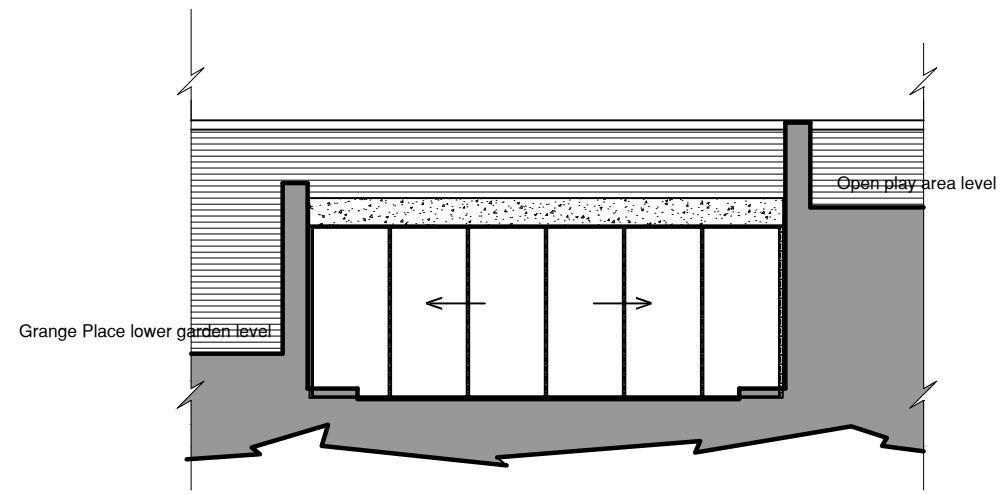
NOTE:  
 1. Do not scale this drawing.  
 2. All measurements and written dimensions are to be verified on site.  
 3. This drawing is for planning submission purposes only. Not Building Regulations or installation.



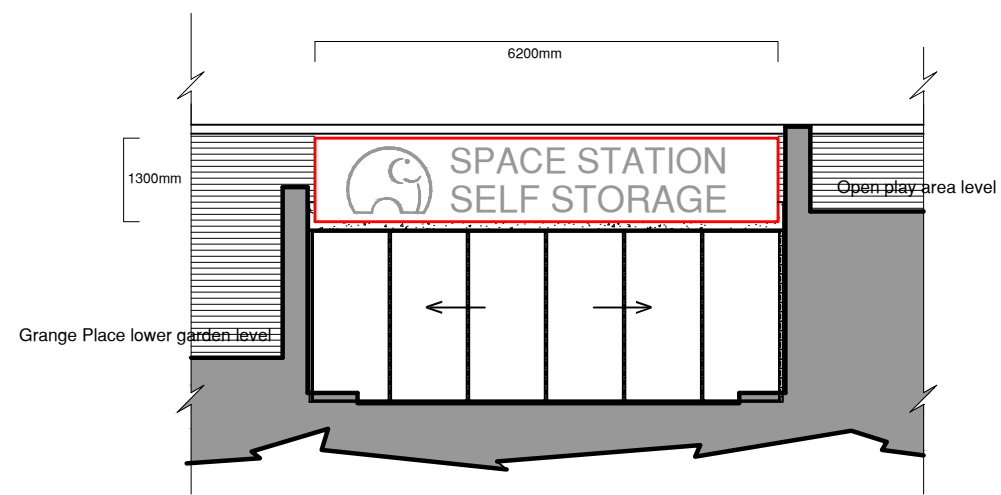
**Sign 3**  
**Sign Over Proposed Bi-fold Main Entrance Doors**  
 6200mm x 1300mm internally illuminated box sign fixed over bi-fold doors as elevation and attached photographs. Sign to be on timer.  
 A flexible faced lightbox unit at 6200mm x 1300mm with a 150mm return depth. All external surfaces powder coated to a satin RAL 6037 Pure Green. Internal bright white LED illumination and control gear contained within. Complete with digitally printed Ultralon flexible PVC face panel of agreed design. Illumination of Elephant logo and text. Luminance level for sign 600 cd/2.s  
 Illuminated sign to be on timer.

**Sign 1**  
**Totum (Lollipop) Sign**  
 A double sided faced lightbox unit at 1400mm x 1000mm x 100mm with Elephant logo and text illuminated. Lightbox fitted to 2400mm h x 100mm x 100mm steel section post. Post coated with satin RAL 7045 Grey and satin RAL 6037 Pure Green. Lightbox coated with satin RAL 6037 Pure Green. Luminance level for sign 600cd/2  
 Illuminated sign to be on timer.  
 Note: No part of the sign must encroach over the site boundary line onto the public path/highway.

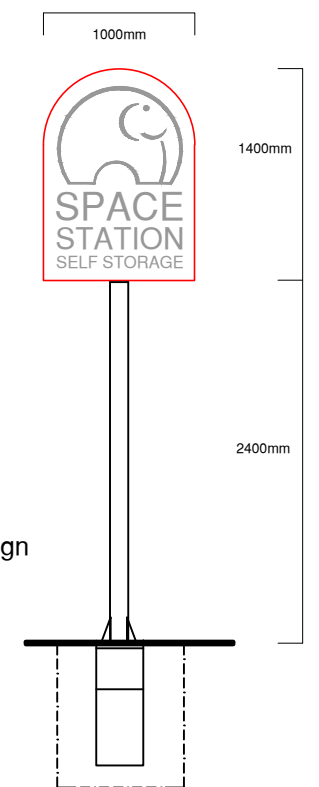
**Sign 2**  
**Existing Steel Gallows Entrance Gate**  
 Existing steel gallows gate to be retained and fitted with 5900mm x 1000mm x 3mm aluminium or ACM panel with digitally printed lettering and details to face. As attached photo image. Sign not illuminated.



Approved Underground Self-Storage Entrance (App 2022/3074/P)  
 Scale 1-50 (A1)

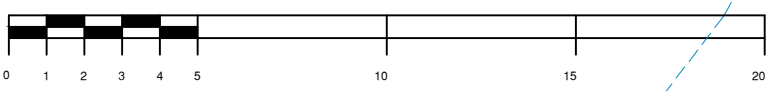


Proposed Underground Self-Storage Entrance Signage  
 Scale 1-50 (A1)



Proposed Illuminated Lollipop Sign  
 Scale 1-25 (A1)

## Self-Storage Entrance Proposed Signage




Rev: Amendments: Date:

**Robert Nall Design**  
 27 Meadow Close, Raynes Park, London, SW20 9JB  
 Tel: 020 8540 8605  
 robertnall@hotmail.co.uk

Project Name:  
 Kingsgate Estate, Kingsgate Place  
 Underground Car Park  
 London, NW6 4JT

Project No:  
 2022/04

Scale:  
 (A1 100) (A3 1-200)      Checked by:  
 RTN

Drawing Name:  
 Proposed Entrance Signage

Drawing No:  
 002      Date:  
 04.07.23