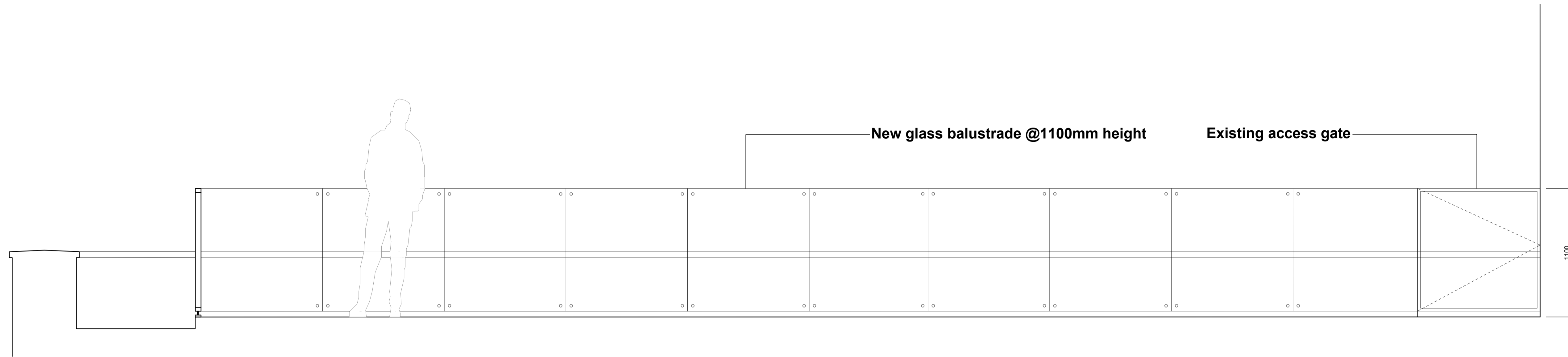
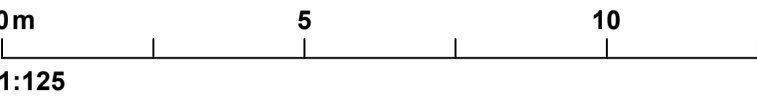


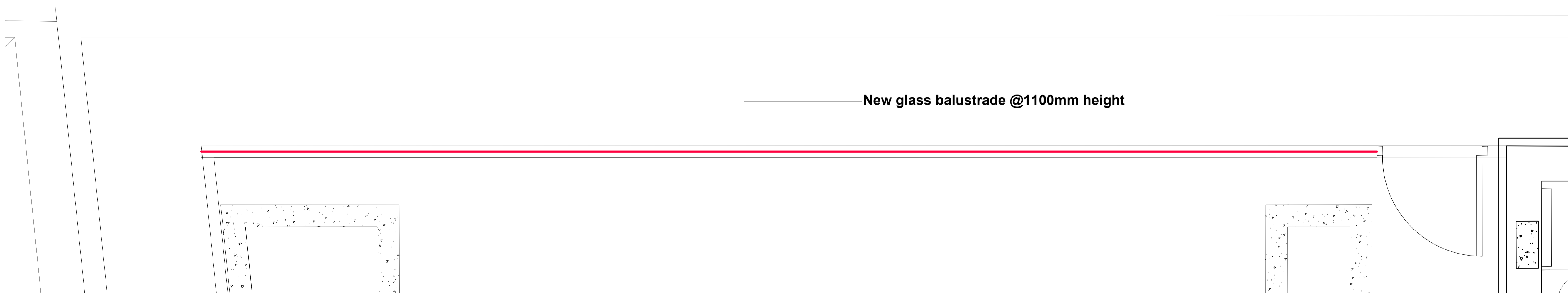
Key Location Plan 1:500 - Red line indicates location of proposed glass balustrade

NOTES

DO NOT SCALE FROM THIS DRAWING.
 VERIFY ALL DIMENSIONS AND SETTING OUT ON SITE.
 NOTIFY ANY DISCREPANCIES TO THE ARCHITECT.
 FOR STRUCTURAL INFORMATION, REFER TO
 STRUCTURAL ENGINEER'S DRAWINGS.
 FOR M&E INFORMATION, REFER TO M&E ENGINEER'S
 AND SUB-CONTRACTOR'S DRAWINGS.
 FOR HEALTH & SAFETY INFORMATION, REFER TO
 HEALTH & SAFETY RISK ASSESSMENTS.



Proposed Elevation 1:20



Proposed Plan 1:20

ISSUE: P02	BY: BM	CHECKED: ARB	DATE: 06/07/2023
Balustrade location added			
ISSUE: P01	BY: BM	CHECKED: ARB	DATE: 17/03/2023
Initial issue			

S4a | FOR PLANNING



**DEPOT POINT, BRITANNIA STREET
LONDON**

**Proposed
Fifth Floor
Glass Balustrade**

Hadfield Cawkwell Davidson

Broomgrove Lodge, 13 Broomgrove Rd, Sheffield, S10 2LZ T 0114 266 8181 www.hcd.co.uk

HCD PROJECT NO. 2021-206	SCALE 1:20 @ A1	REV. P02
PROJECT NO. HCD A0 00 DR	ROLE + NUMBER A-70-008	