

PROPOSED  
FIRST FLOOR  
DRAINAGE PLAN  
1:50

- KEY:
- |  |                         |  |                     |
|--|-------------------------|--|---------------------|
|  | Underground Drainage    |  | Foul Water Drainage |
|  | Above Ground Drainage   |  | Rainwater Drainage  |
|  | Existing to be retained |  |                     |

**NOTE :**  
Layout it draft only and pending BC approval  
Patio drainage layout pending approval from with landscape designer and SE  
All runs, connections and specifications to be confirmed by services engineer and structural engineer  
Calculations required to confirm accurate pipework sizing and specification.  
Allow to read in conjunction with JDP Drainage survey 6579/1

- Existing manhole - no change
- Connection to plant room for boiler condensate.
- Existing manhole. No change to connections. Replace cover with new recessed, sealed cover infill with stone slabs.
- Retain existing manholes 1&2. Allow to replace cover with new recessed, sealed cover to be infill with stone slabs.
- Linear Slot drain. New connections to existing manholes 1&2. Allow for slot drain access channels and P-traps at base.
- Free drain area to center of patio and where no RC concrete slab.
- Drainage gulley patio extremities (Layout tbc with landscape designer and SE)
- New RWP and connection to manhole 1. Allow for back Inlet bottle gully.
- Retain existing SVP connection.
- Assumed connection to WC as layout matches existing.

REV DATE DRAWN/CHK DESCRIPTION



Scale 1:100 @ A3

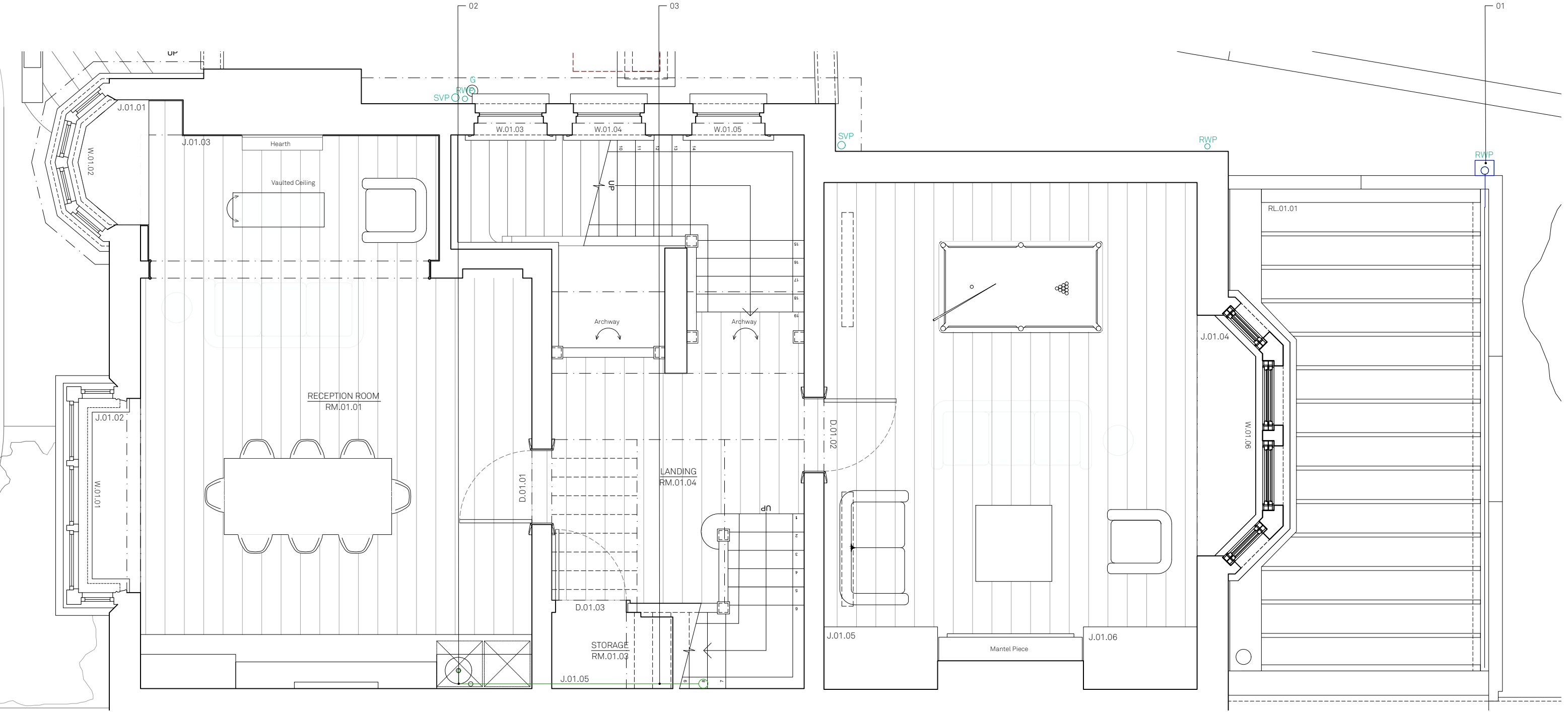


North

Do not scale for construction. Use figured dimensions only.  
All discrepancies to be verified with architect prior to ordering or construction/execution. Confirm all setting out with architect prior to construction. Drawing to be read in conjunction with all other documents. Copyright Architecture for London.

Architecture for London  
3-5 Bleeding Heart Yard  
London EC1N 8SJ  
020 3637 4236  
architectureforlondon.com

**Architecture  
for London.**



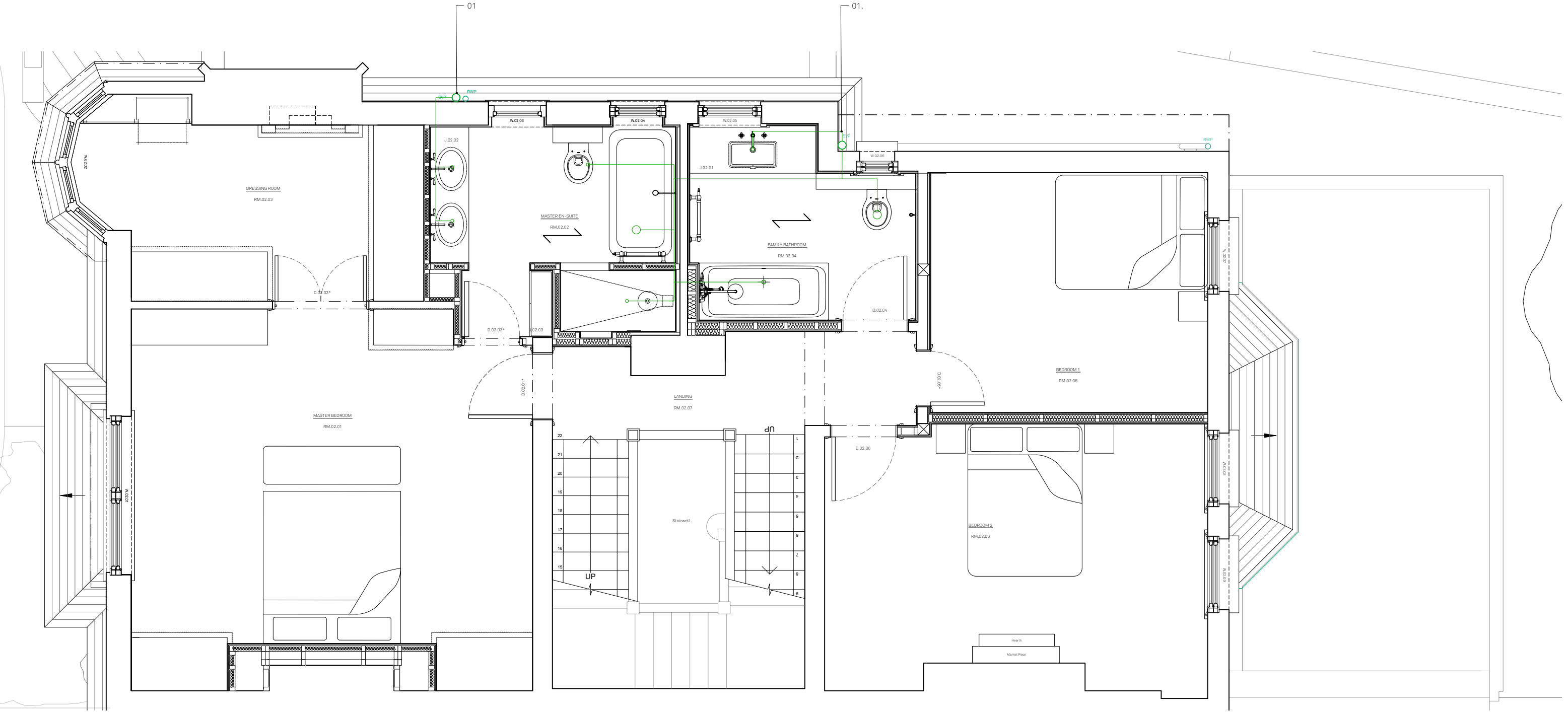
PROPOSED  
FIRST FLOOR  
DRAINAGE PLAN  
1:50

- KEY:
- |  |                         |  |                     |
|--|-------------------------|--|---------------------|
|  | Underground Drainage    |  | Foul Water Drainage |
|  | Above Ground Drainage   |  | Rainwater Drainage  |
|  | Existing to be retained |  |                     |

**NOTE :**  
**Layout it draft only and pending BC approval**  
**All runs, connections and specifications to be confirmed by services engineer and structural engineer**  
Calculations required to confirm accurate pipework sizing and specification.  
Allow to read in conjunction with JDP Drainage survey 6579/1

1. Bespoke External hopper and downpipe
2. New connections to sink, icemaker and dishwasher within PEK unit.
3. Route through store room (tbc) and down through to GF ensuite bathroom.

REV	DATE	DRAWN/CHK	DESCRIPTION
-----	------	-----------	-------------



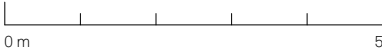
PROPOSED  
SECOND FLOOR  
DRAINAGE PLAN  
1:50

- KEY:
- |  |                         |  |                     |
|--|-------------------------|--|---------------------|
|  | Underground Drainage    |  | Foul Water Drainage |
|  | Above Ground Drainage   |  | Rainwater Drainage  |
|  | Existing to be retained |  |                     |

**NOTE:**  
Layout it draft only and pending BC approval  
All runs, connections and specifications to be confirmed by services engineer and structural engineer  
Calculations required to confirm accurate pipework sizing and specification.  
Allow to read in conjunction with JDP Drainage survey 6579/1

1. Connections to existing SVP.

REV	DATE	DRAWN/CHK	DESCRIPTION
-----	------	-----------	-------------



Scale 1:100 @ A3

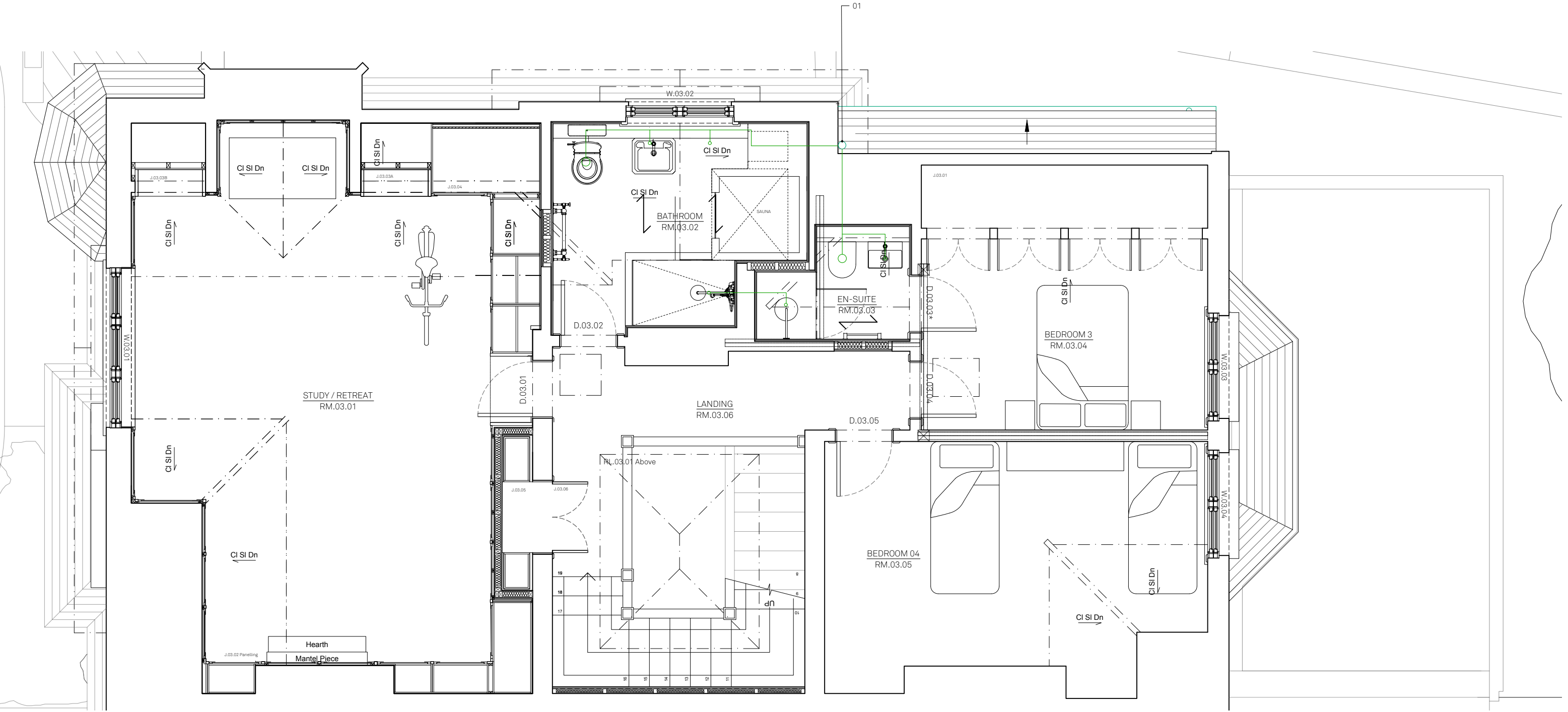


North

Do not scale for construction. Use figured dimensions only.  
All discrepancies to be verified with architect prior to ordering or construction/execution. Confirm all setting out with architect prior to construction. Drawing to be read in conjunction with all other documents. Copyright Architecture for London.

Architecture for London  
3-5 Bleeding Heart Yard  
London EC1N 8SJ  
020 3637 4236  
architectureforlondon.com

Architecture  
for London.



PROPOSED  
THIRD FLOOR  
DRAINAGE PLAN  
1:50

- KEY:
- |  |                         |  |                     |
|--|-------------------------|--|---------------------|
|  | Underground Drainage    |  | Foul Water Drainage |
|  | Above Ground Drainage   |  | Rainwater Drainage  |
|  | Existing to be retained |  |                     |

**NOTE:**  
Layout it draft only and pending BC approval  
All runs, connections and specifications to be confirmed by services engineer and structural engineer  
Calculations required to confirm accurate pipework sizing and specification.  
Allow to read in conjunction with JDP Drainage survey 6579/1

1. Connections to existing SVP.

REV	DATE	DRAWN/CHK	DESCRIPTION
-----	------	-----------	-------------