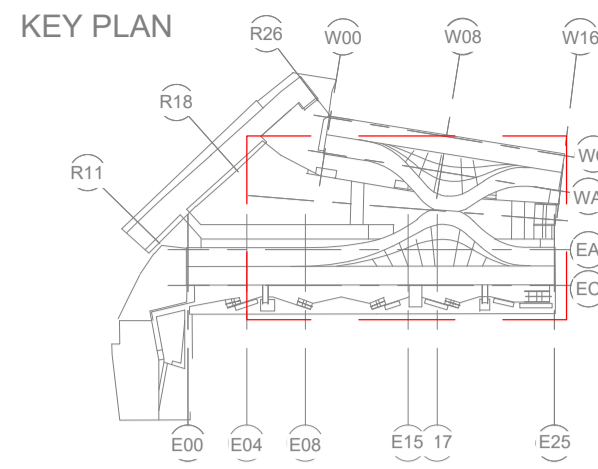
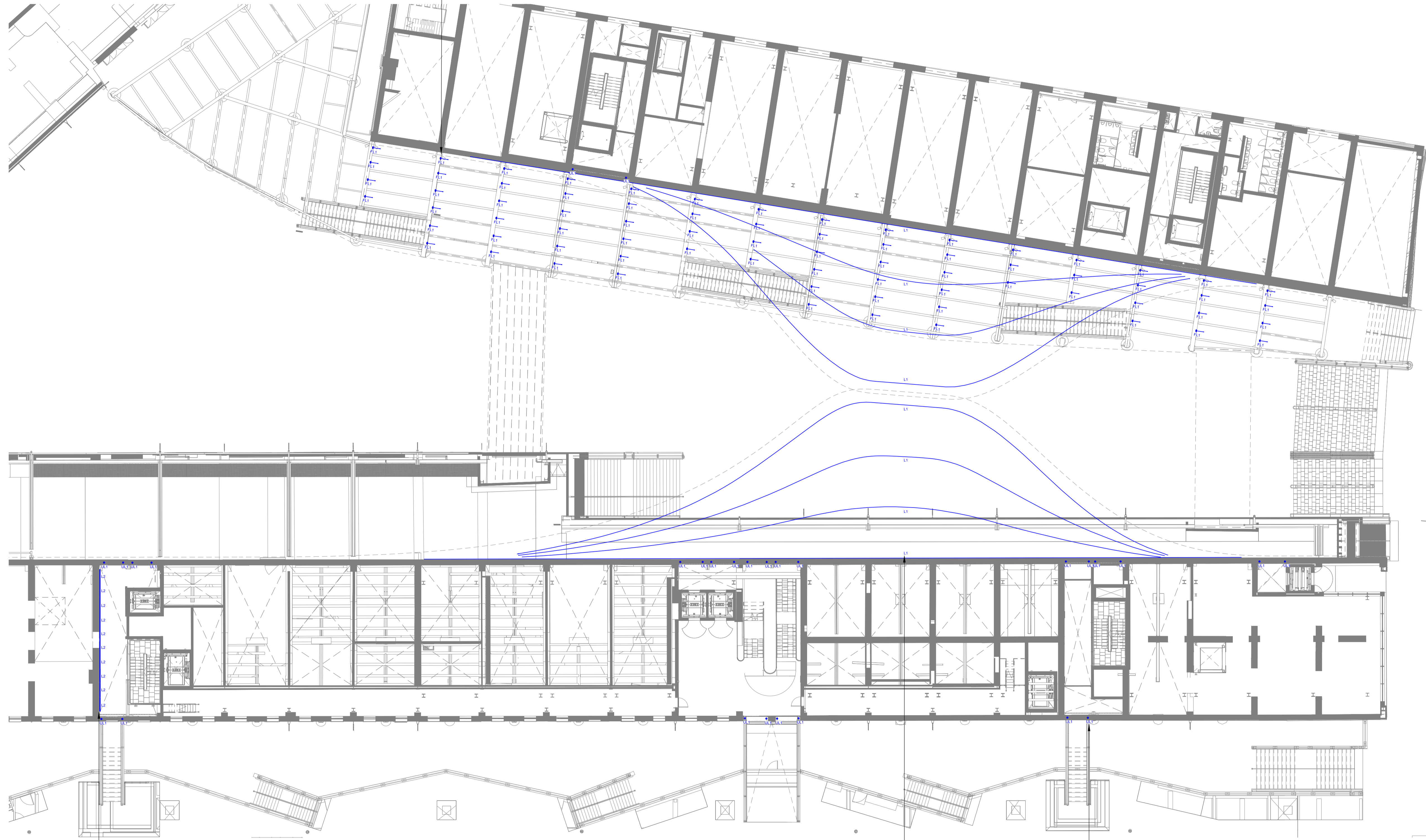


LEGEND			
TYPE	DESCRIPTION		
	Linear wall grazer RGBW/55W/IP66		Ground recessed RGBW uplighter RGBW/19.8W/m/IP67
	RGBW floodlight Elliptical beam/38W/IP67		
	Tunable white linear LED 2100K-4400K/12W/m/IP67		



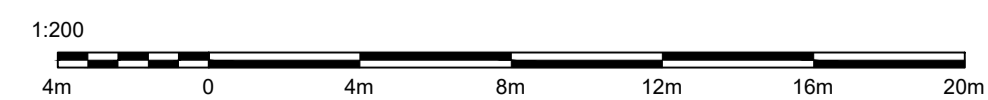
FL1- RGBW flood light to
light underside of the bridge,
refer to drawings 0203-802,
0203-803, 0203-804



L2 - Linear RGBW wall grazer to
wash the wall in the passage,
refer to drawing 0203-805

L1 - Flexible linear LED to illuminate
underside of the kissing roof, refer to
drawing 0203-801

UL1 - Ground recessed RGBW uplighter
both sides of the entrances,
refer to drawing 0203-805 and 0203-806



24.03.2023	-	For Planning
Date	Rev	Description

Notes

Important Note

Where Dimensions are not given, drawings
must not be scaled.

For complete luminaire breakdown refer to
schedules

In the event of conflict between this drawing
and lead consultants drawing the matter must
be referred prior to proceeding

CLIENT	Argent	PROJECT NO	0203
PROJECT	CDY - Gateways		
STATUS	FOR PLANNING		
SCALE	Scale 1:200@A1	DATE	18/01/2023
	Scale 1:400@A3		
TITLE	CDY - Lighting Plan		
DRAWING NO	0203-201	REVISION	-