

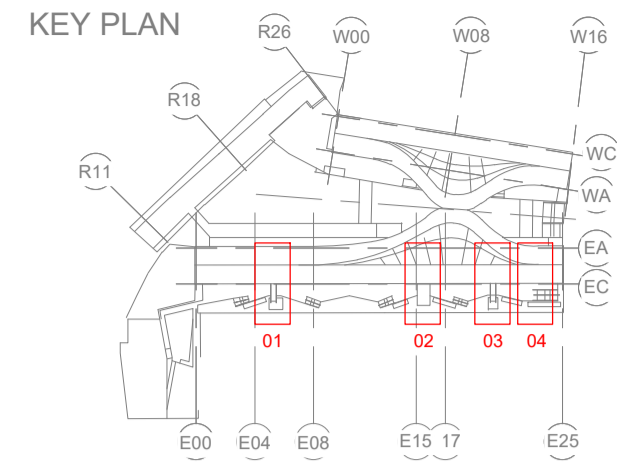
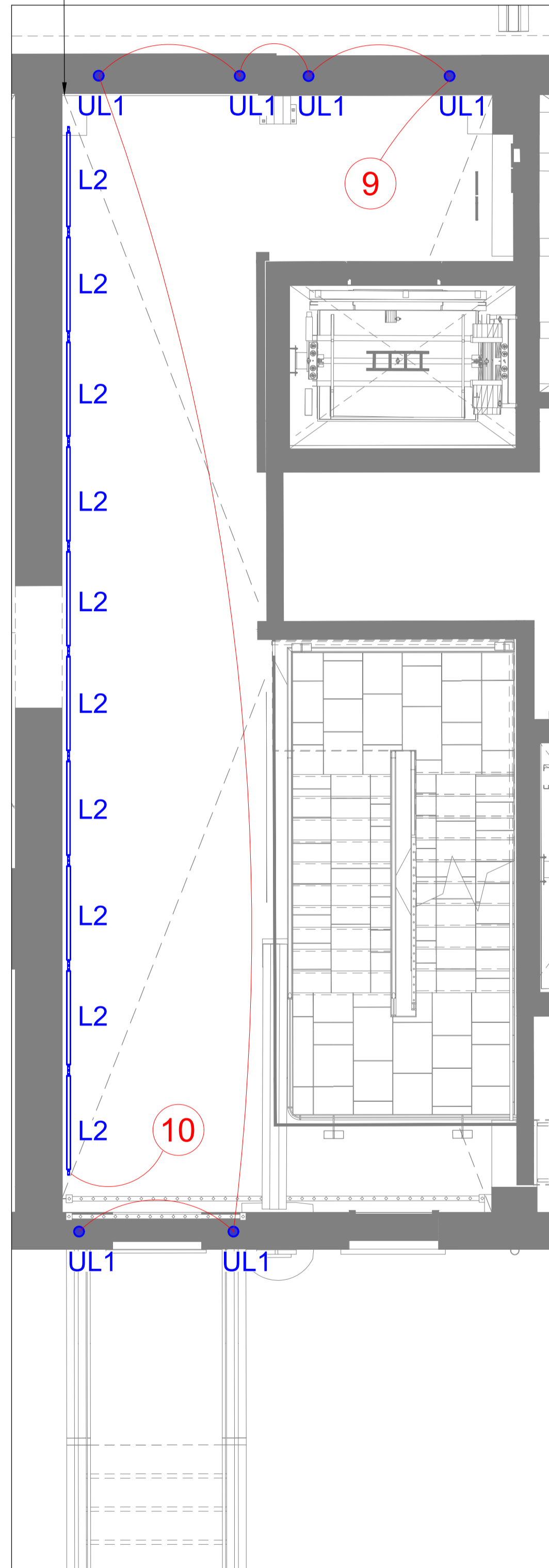


LEGEND	
TYPE	DESCRIPTION
 L2	Tunable white linear LED 2100K-4400K/12W/m/IP67
 UL1	Ground recessed RGBW uplighter RGBW/19.8W/m/IP67

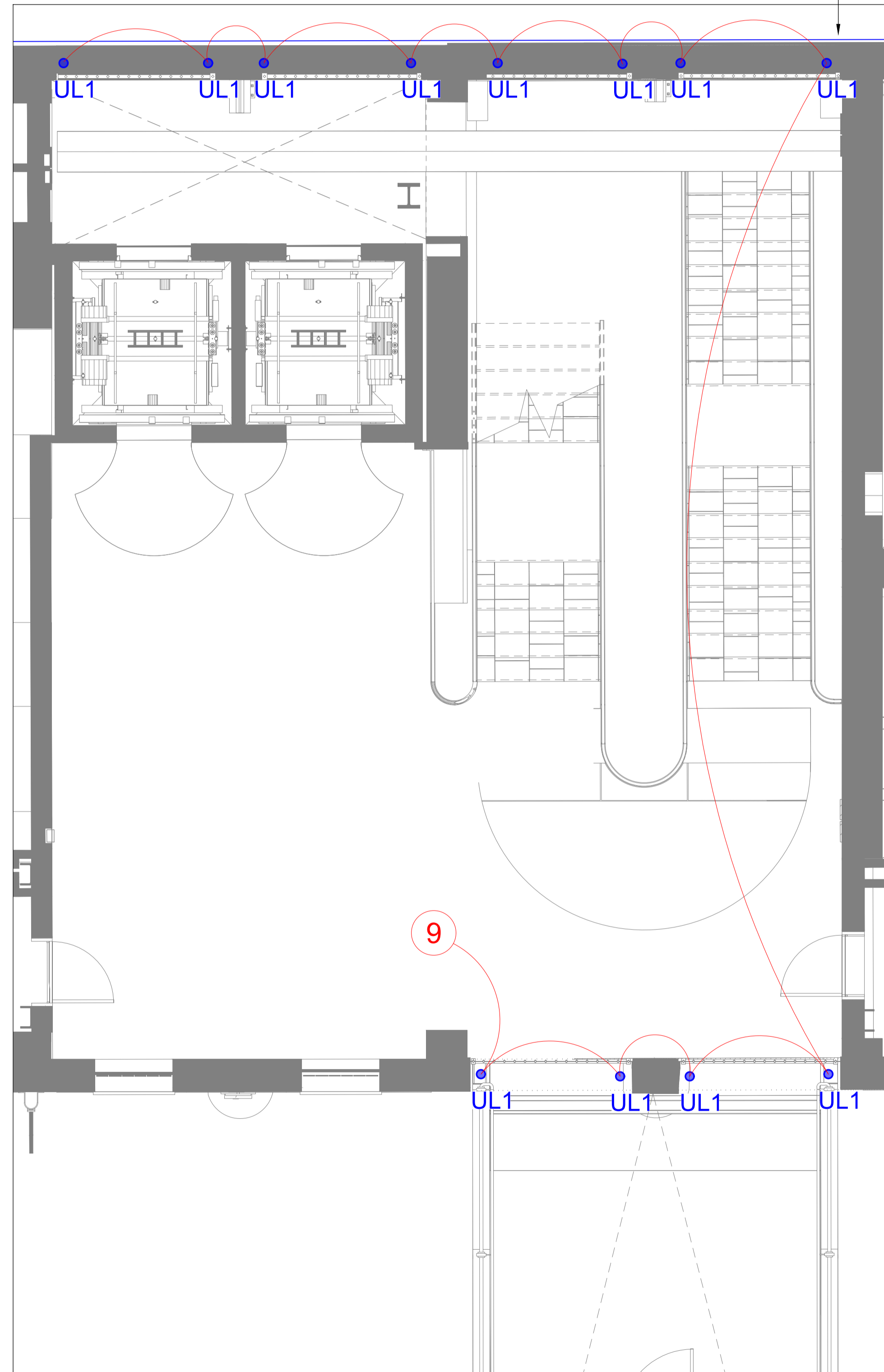


L2 - Linear RGBW fitting to graze the wall

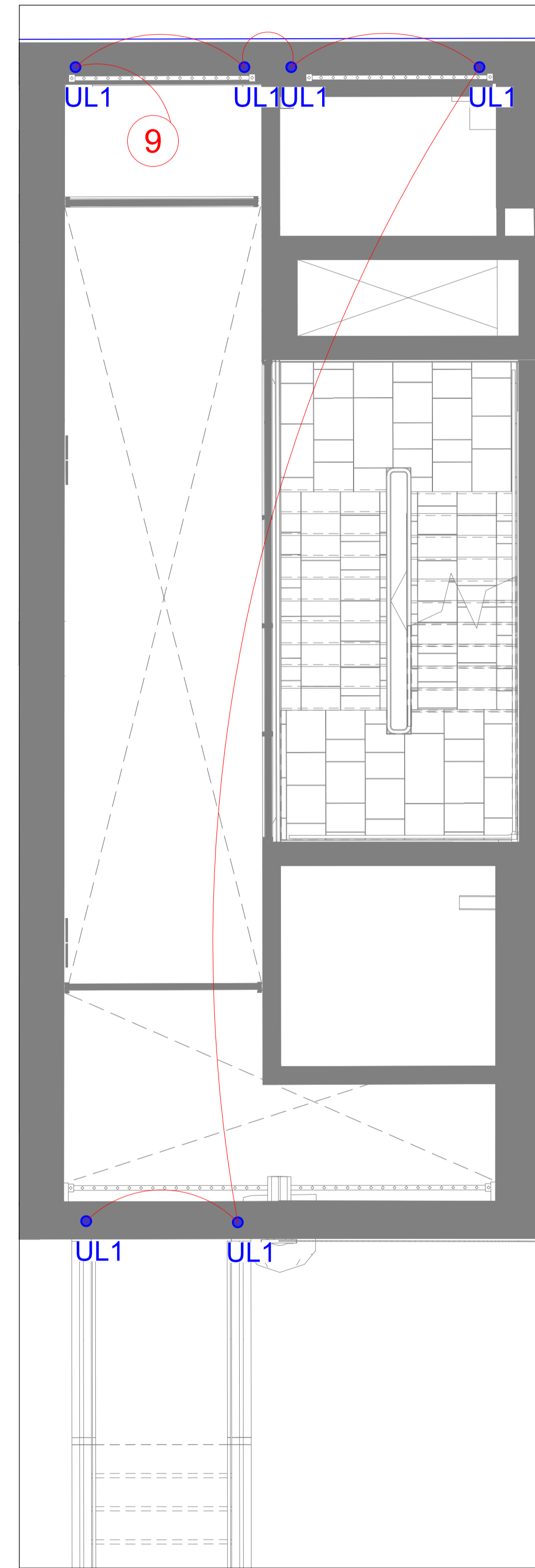
UL1 - Ground recessed RGBW uplighter both sides of the arched doorways,
UL1 in all entrances in both East and West wings to be located on same control channel



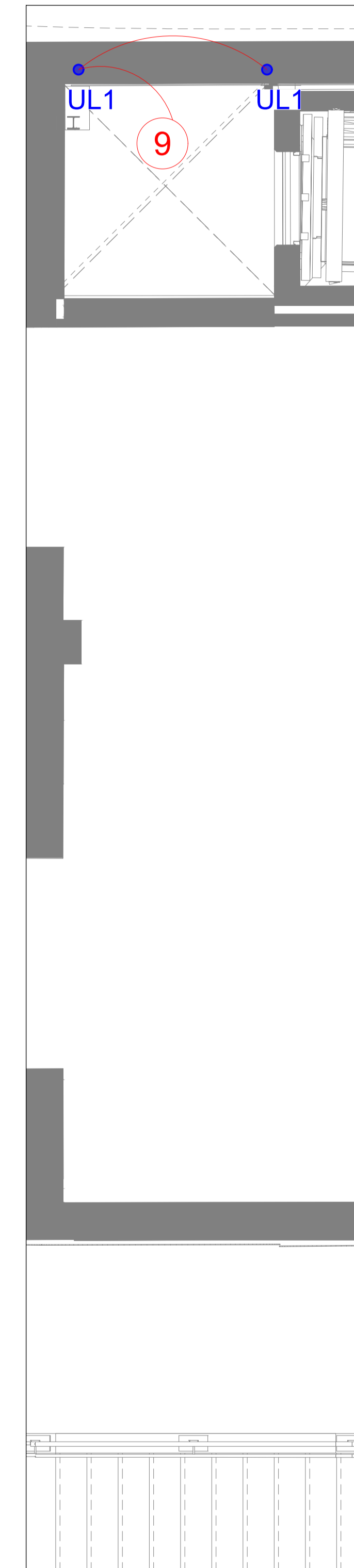
EAST WING ENTRANCE - 01
Scale 1:50@ A1



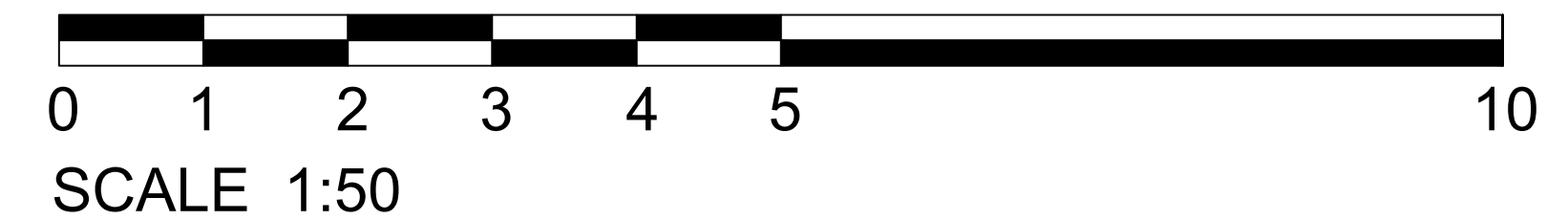
EAST WING ENTRANCE - 02
Scale 1:50@ A1



EAST WING ENTRANCE - 03
Scale 1:50@ A1



EAST WING ENTRANCE - 04
Scale 1:50@ A1



24.03.2023 - For Planning

Date	Rev	Description

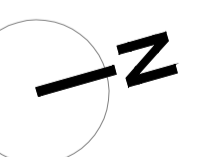
Notes

Important Note

Where Dimensions are not given, drawings must not be scaled.

For complete luminaire breakdown refer to schedules

In the event of conflict between this drawing and lead consultants drawing the matter must be referred prior to proceeding



CLIENT	Argent	PROJECT NO.	0203
PROJECT	CDY - Gateways		
STATUS	FOR PLANNING		
SCALE	Scale 1:50@A1	DATE	18/01/2023
	Scale 1:100@A3		
TITLE	East Wing Entrances 01,02,03,04 - Lighting Control Channels		
DRAWING NO.	0203-805	REVISION	-