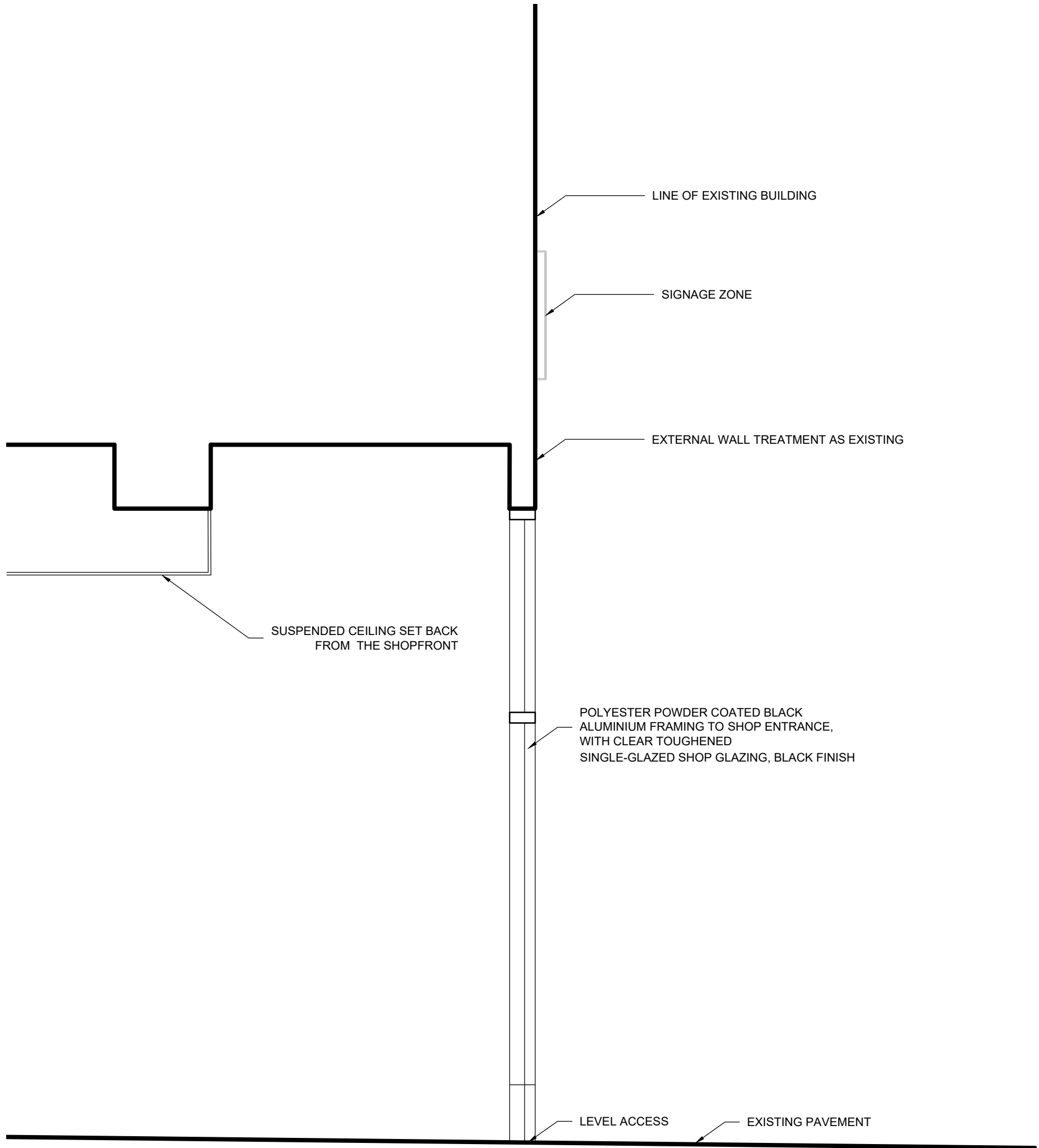


**PLANNING**

- DO NOT SCALE FROM THIS DRAWING.
- ALL DIMENSIONS MUST BE CHECKED ON SITE.
- ALL RIGHTS RESERVED, NO REPRODUCTION IN ANY MATERIAL FORM IS PERMITTED WITHOUT CONSENT.
- THIS DRAWING IS COPYRIGHT OF CUMMING-GROUP.



SCALE BAR 1: 20

<b>project</b> 154 - 162 TOTTENHAM COURT ROAD	<b>title</b> PROPOSED SECTION THROUGH NEW SHOPFRONT	P1 PLANNING ISSUE 21.04.23 AS		
		REV DESCRIPTION DATE BY	AS SC	
<b>client</b> CHESHIRE WEST AND CHESTER COUNCIL C/O PATRIZIA UK LTD	1 Fellmongers Path, Tower Bridge Road, London SE1 3LY Tel : 020 7029 3888 E: info@cumming-group.com www.cumming-group.com	<b>date</b> 21-04-2023	<b>drawn</b> AS	<b>checked</b> SC
		<b>drawing no.</b> 1341 - 607		<b>revision</b> P2
<b>scales</b> 1:20 @ A3				