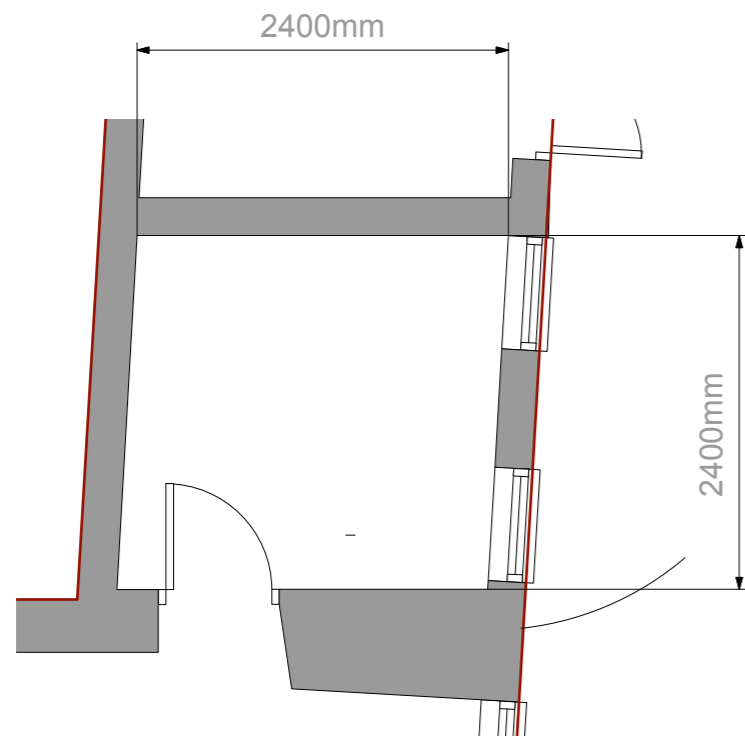


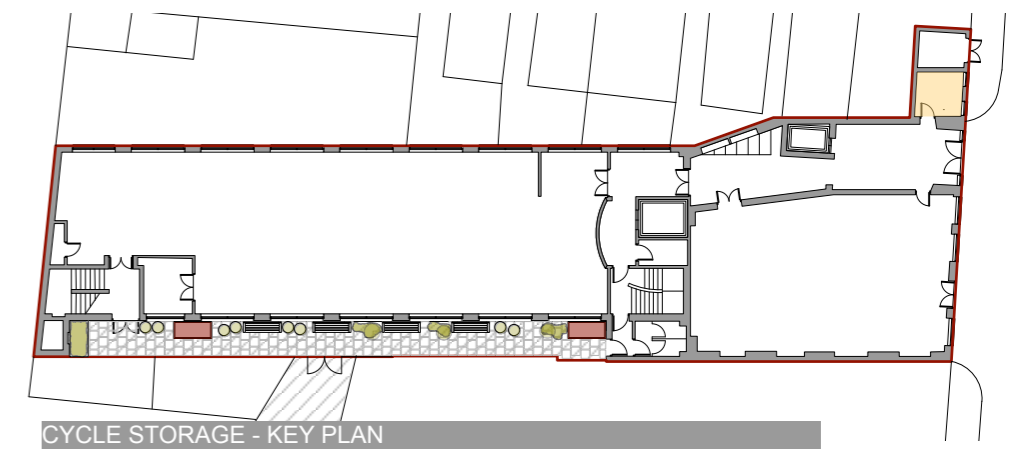
**PROPOSED 2NO. PROPRIETARY SECURE CYCLE STORAGE SHED**  
 2000mm Long x 900mm Deep x 1200mm High (approx.)

PROPOSED TYPICAL EXTERNAL CYCLE STORAGE  
 1:50@A3



**EXISTING SECURE CYCLE STORAGE ROOM, OFF MAIN RECEPTION AREA.**  
 2400mm Wide x 2400mm Deep (approx.)

EXISTING DEDICATED INTERNAL CYCLE STORAGE ROOM  
 1:50@A3



CYCLE STORAGE - KEY PLAN

**5-6 UNDERHILL, CAMDEN NW1  
 PROPOSED CHANGE OF USE**

Title EXISTING & PROPOSED CYCLE STORAGE		
Drawing Number 2205_AA_0802	Drawn By RCA	Date JULY 2023
CAD File Name		