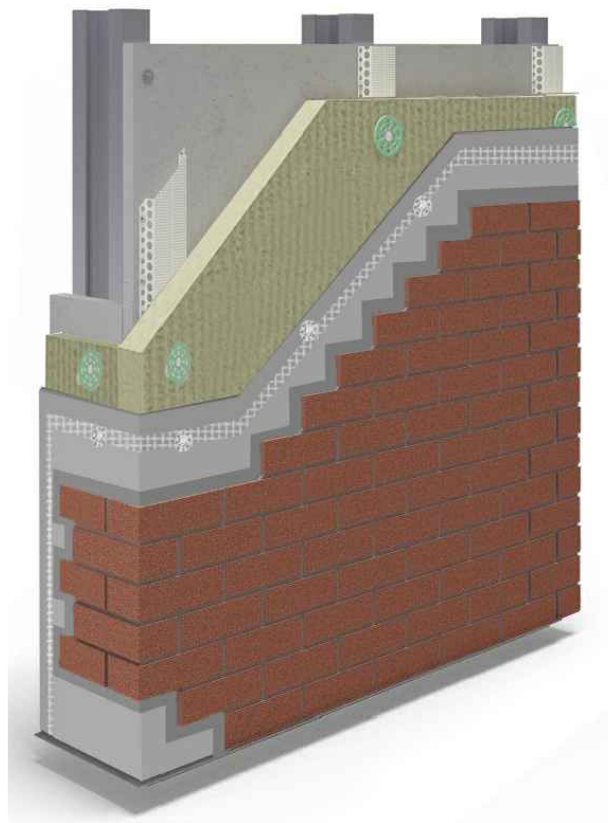




Wetherby Building Systems

External Wall Insulation Detail Drawings Stone Wool & 9-25mm Brick Slip Finish



The following Wetherby EWI detail drawing set is generic and is not to be used for a specific project. Cold Bridging solutions are available upon request. Please contact Wetherby Technical to obtain a project specific detail drawing set.

1 Kid Glove Road, Golborne Enterprise Park, Golborne, Greater Manchester, WA3 3GS
Tel: 01942 717100 Fax: 01942 717101 Web: www.wbs-ltd.co.uk E-mail: technical@wbs-ltd.co.uk

Steel frame by others

WBS RagRail screw fixed through sheathing board into steel studs creating a drainage cavity behind the insulation boards

WBS approved 'A' rated cement particle board (min 12mm)

WBS initial insulation board fixing

WBS Stone Wool insulation board (thickness to suit client requirements)

WBS scrim adhesive coat 4-6mm reinforced with alkali resistant glass fibre reinforcing mesh bedded into top third

WBS approved fixings fixed through mesh and basecoat whilst wet into RagRails at 300mm vertical cts. 100mm x 100mm stress patches are required over each fixing head, alternatively install second layer of mesh in all areas.

WBS brick slip adhesive

WBS 9-25mm brick slips (colour to clients approval)

WBS pointing mortar

drawing description.

Isometric - System Build Up Detail

drawing no.

SFS-RAGRAIL-SW-9/25MM BRICKSLIP-01

project name.

Generic Detail Drawings

drawn by. LS

checked by. RT

revision. -

scale. nts

date. 16.05.2022

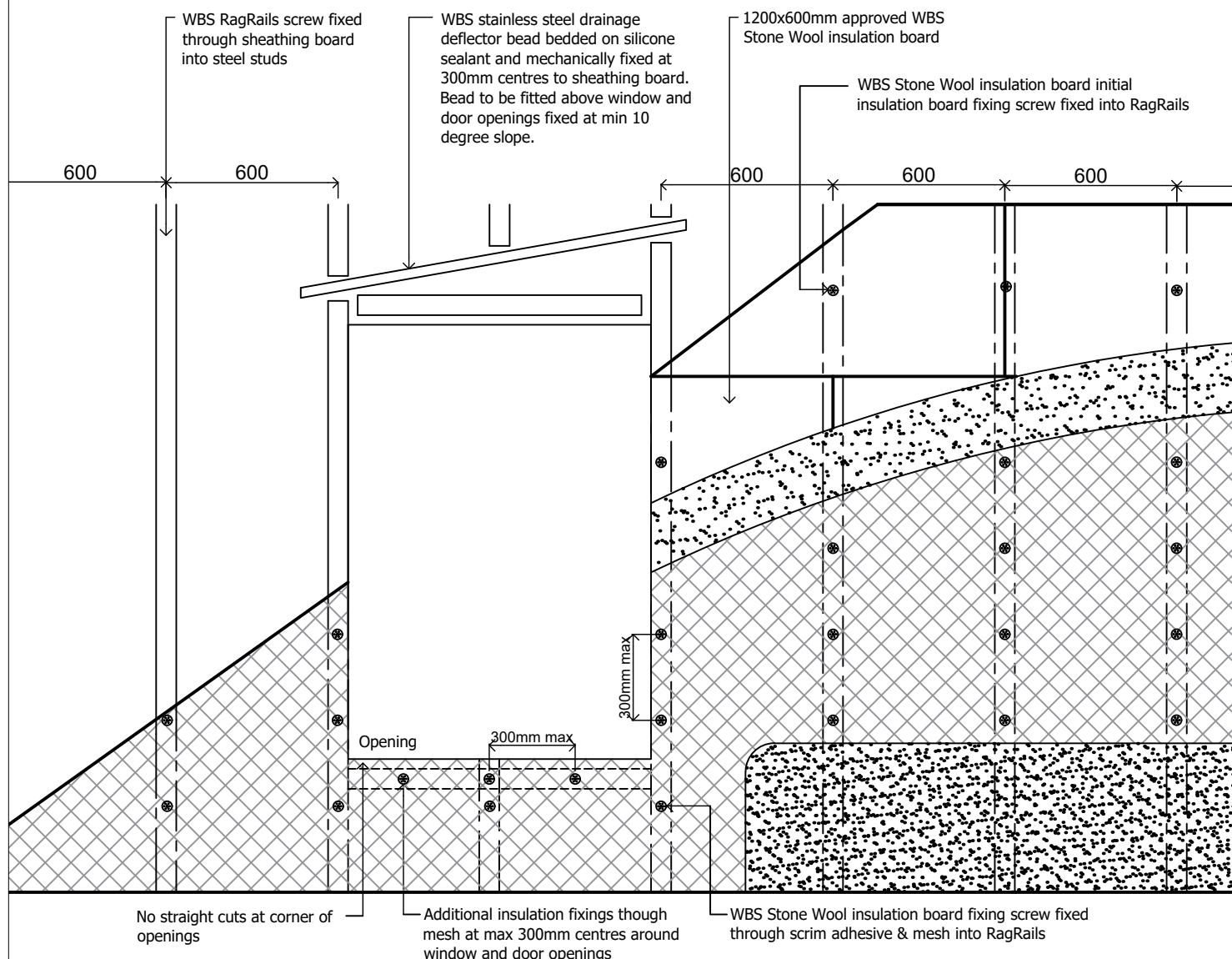
dwg set. 66

Wetherby Building Systems Ltd



1 Kid Glove Road, Golborne Enterprise Park,
Golborne, Greater Manchester, WA3 3GS
Tel: 01942 717100 Fax: 01942 717101
Web: www.wbs-ltd.co.uk
E-mail: technical@wbs-ltd.co.uk
© WBS-LTD 1998-2022. All rights reserved

N.B. Fixing pattern is subject to project specific wind load calculations and pull out tests



- 2 initial insulation board fixings required through each board, main fixings installed through scrim coat and mesh and in to RagRails at 300mm centres.

Secondary WBS stainless steel fixing to be installed through the scrim coat and mesh at a rate of 1 per m²

RagRail cavity spacers to be installed at 600mm centres

RagRail cavity spacers to be fixed down the side and through the centre at 300mm centres

In areas where the board is not fully supported, horizontal RagRails to be installed where appropriate

WBS approved 'A' rated cement particle board (min 12mm)s to be fixed and jointed to manufacturers instructions

drawing description.

Fixing arrangement

drawing no.

SFS-RAGRAIL-SW-9/25MM BRICKSLIP-02A

project name.

Generic Detail Drawings

drawn by. LS

checked by. RT

revision. -

scale. nts

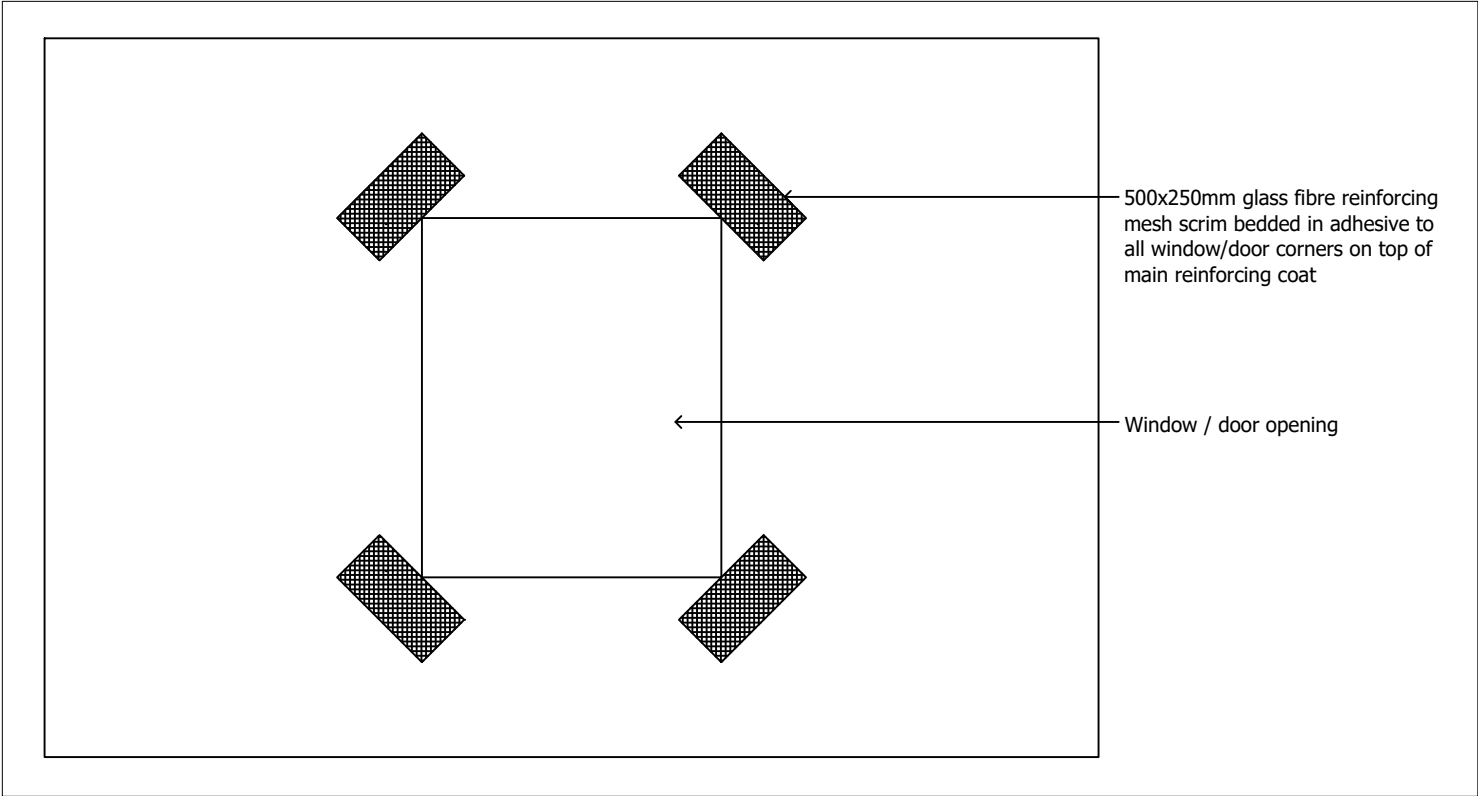
date. 16.05.2022


dwg set. 66

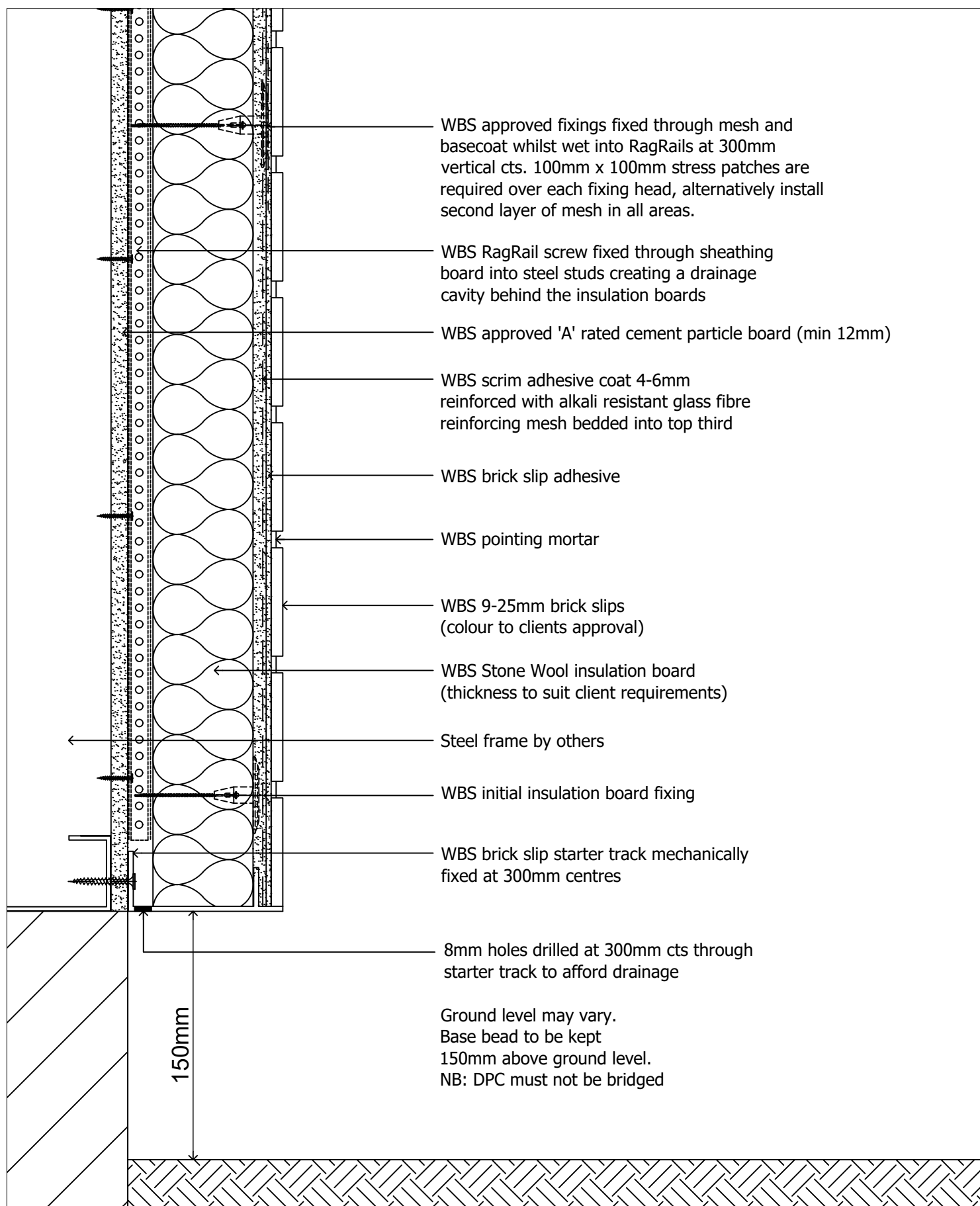
Wetherby Building Systems Ltd



1 Kid Glove Road, Golborne Enterprise Park,
Golborne, Greater Manchester, WA3 3GS
Tel: 01942 717100 Fax: 01942 717101
Web: www.wbs-ltd.co.uk
E-mail: technical@wbs-ltd.co.uk
© WBS-LTD 1998-2022. All rights reserved



drawing description. Stress patch detail	drawn by. LS	 <p>1 Kid Glove Road, Golborne Enterprise Park, Golborne, Greater Manchester, WA3 3GS Tel: 01942 717100 Fax: 01942 717101 Web: www.wbs-ltd.co.uk E-mail: technical@wbs-ltd.co.uk © WBS-LTD 1998-2022. All rights reserved</p>
	checked by. RT	
drawing no. SFS-RAGRAIL-SW-9/25MM BRICKSLIP-02B	revision. -	
	scale. nts	
project name. Generic Detail Drawings	date. 16.05.2022	
	dwg set. 66	



drawing description.
Base bead detail

drawing no.
SFS-RAGRAIL-SW-9/25MM BRICKSLIP-03

project name.
Generic Detail Drawings

drawn by. LS

checked by. RT

revision. -

scale. nts

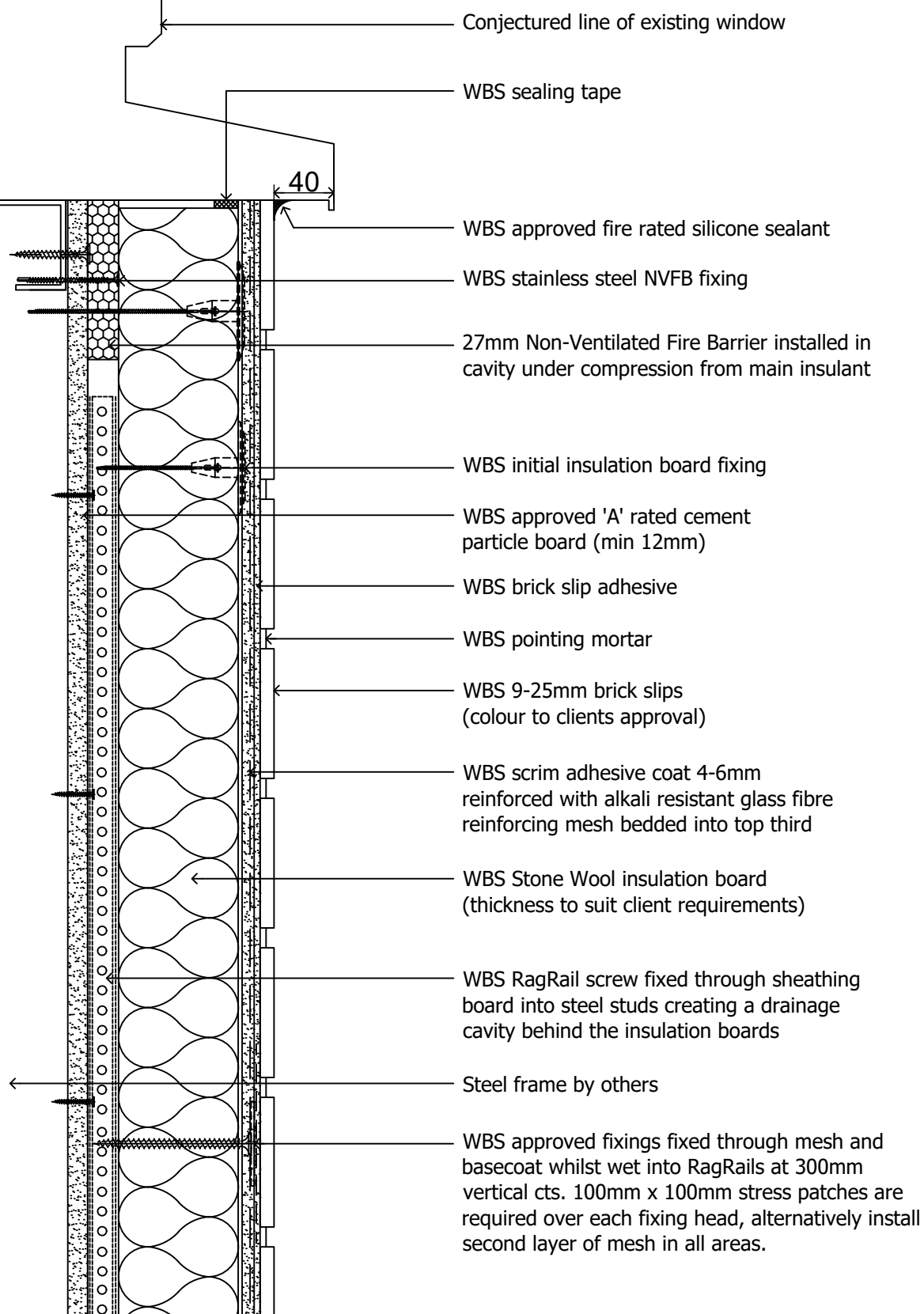
date. 16.05.2022

dwg set. 66

Wetherby Building Systems Ltd



1 Kid Glove Road, Golborne Enterprise Park,
Golborne, Greater Manchester, WA3 3GS
Tel: 01942 717100 Fax: 01942 717101
Web: www.wbs-ltd.co.uk
E-mail: technical@wbs-ltd.co.uk
© WBS-LTD 1998-2022. All rights reserved



drawing description.

Window cill detail

drawing no.

SFS-RAGRAIL-SW-9/25MM BRICKSLIP-04

project name.

Generic Detail Drawings

drawn by. LS

checked by. RT

revision. -

scale. nts

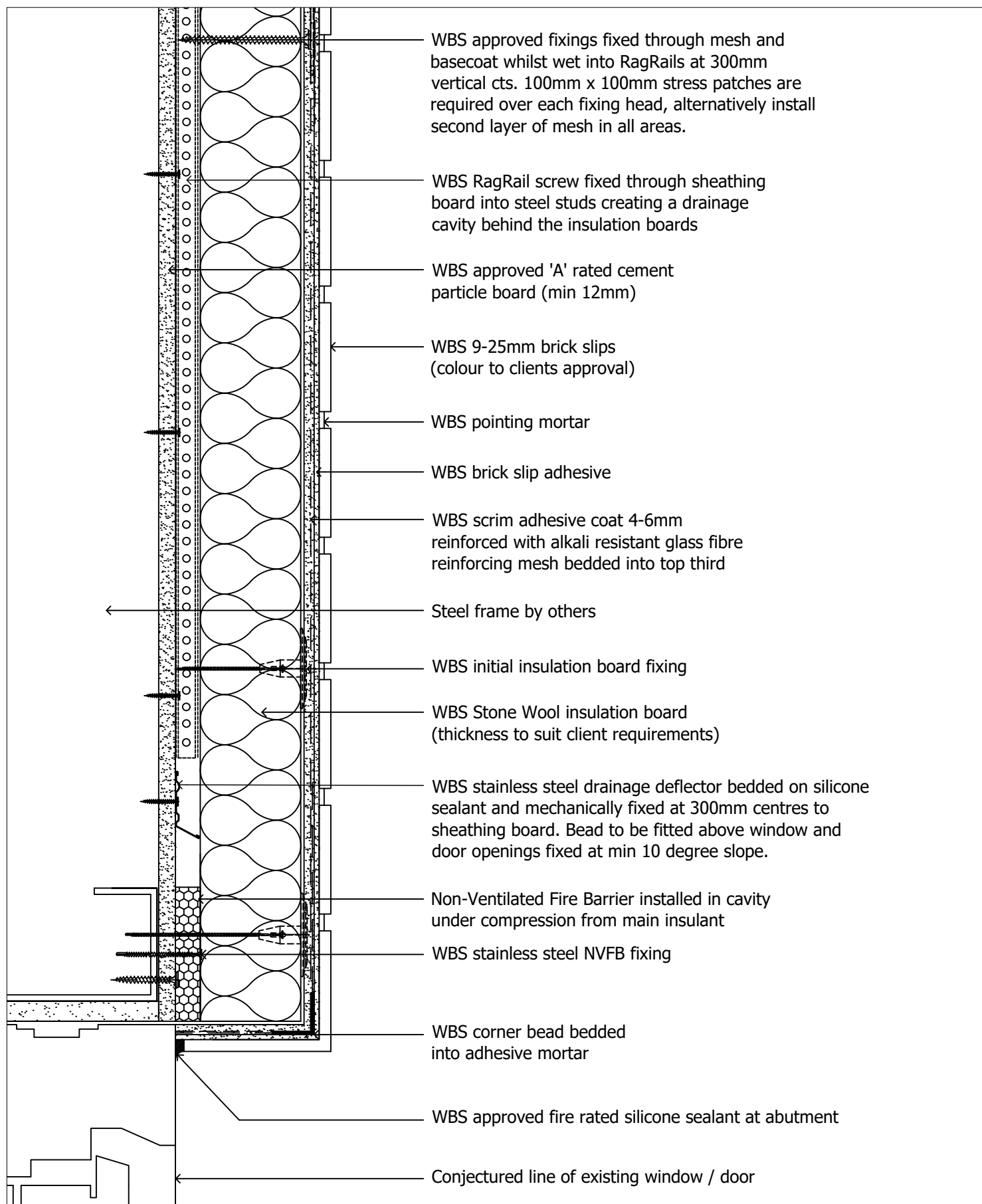
date. 16.05.2022


dwg set. 66

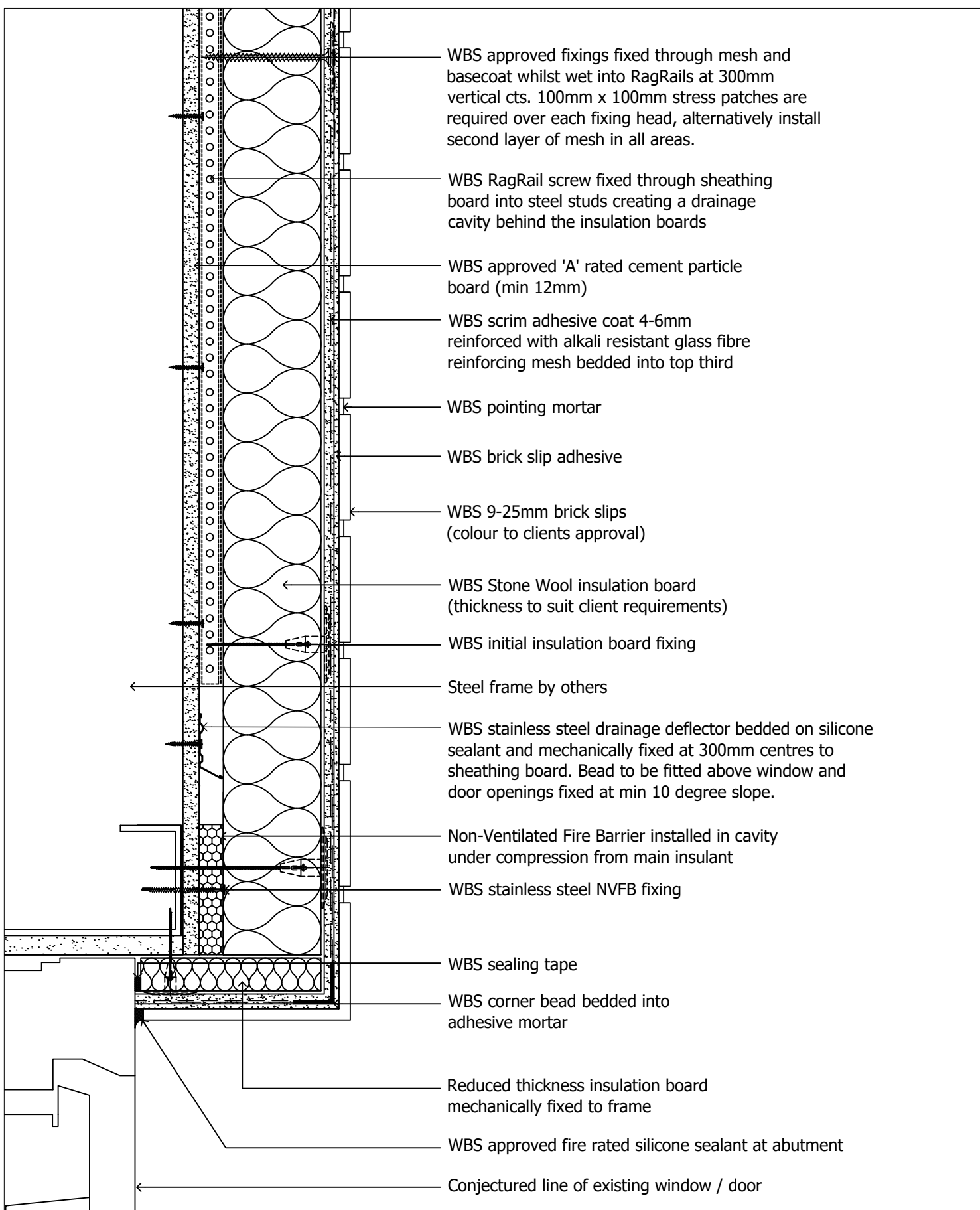
Wetherby Building Systems Ltd



1 Kid Glove Road, Golborne Enterprise Park,
Golborne, Greater Manchester, WA3 3GS
Tel: 01942 717100 Fax: 01942 717101
Web: www.wbs-ltd.co.uk
E-mail: technical@wbs-ltd.co.uk
© WBS-LTD 1998-2022. All rights reserved



drawing description. Window / Door head detail (1 of 2)	drawn by. LS	 1 Kid Glove Road, Golborne Enterprise Park, Golborne, Greater Manchester, WA3 3GS Tel: 01942 717100 Fax: 01942 717101 Web: www.wbs-ltd.co.uk E-mail: technical@wbs-ltd.co.uk © WBS-LTD 1998-2022. All rights reserved
	checked by. RT	
drawing no. SFS-RAGRAIL-SW-9/25MM BRICKSLIP-05A	revision. -	
	scale. nts	
project name. Generic Detail Drawings	date. 16.05.2022	
	dwg set. 66	



drawing description.

Window / Door head detail (2 of 2)

drawing no.

SFS-RAGRAIL-SW-9/25MM BRICKSLIP-05B

project name.

Generic Detail Drawings

drawn by. LS

checked by. RT

revision. -

scale. nts

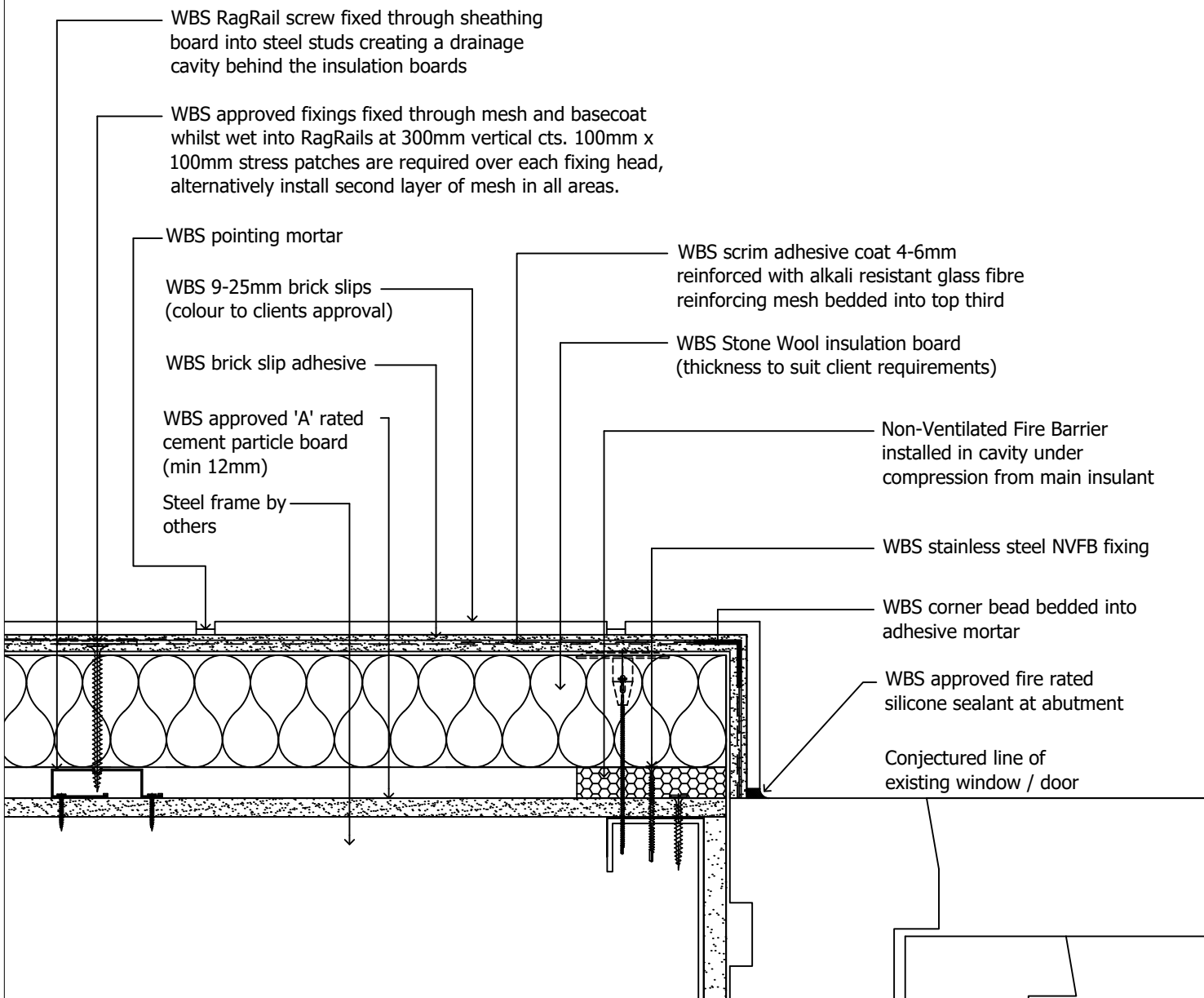
date. 16.05.2022

dwg set. 66

Wetherby Building Systems Ltd



1 Kid Glove Road, Golborne Enterprise Park,
Golborne, Greater Manchester, WA3 3GS
Tel: 01942 717100 Fax: 01942 717101
Web: www.wbs-ltd.co.uk
E-mail: technical@wbs-ltd.co.uk
© WBS-LTD 1998-2022. All rights reserved



drawing description.

Window / Door jamb detail (1 of 2)

drawing no.

SFS-RAGRAIL-SW-9/25MM BRICKSLIP-06A

project name.

Generic Detail Drawings

drawn by. LS

checked by. RT

revision. -

scale. nts

date. 16.05.2022

dwg set. 66

Wetherby Building Systems Ltd



1 Kid Glove Road, Golborne Enterprise Park,
Golborne, Greater Manchester, WA3 3GS
Tel: 01942 717100 Fax: 01942 717101
Web: www.wbs-ltd.co.uk
E-mail: technical@wbs-ltd.co.uk
© WBS-LTD 1998-2022. All rights reserved

WBS RagRail screw fixed through sheathing board into steel studs creating a drainage cavity behind the insulation boards

WBS approved fixings fixed through mesh and basecoat whilst wet into RagRails at 300mm vertical cts. 100mm x 100mm stress patches are required over each fixing head, alternatively install second layer of mesh in all areas.

WBS pointing mortar

WBS 9-25mm brick slips (colour to clients approval)

WBS brick slip adhesive

WBS approved 'A' rated cement particle board (min 12mm)

Steel frame by others

WBS scrim adhesive coat 4-6mm reinforced with alkali resistant glass fibre reinforcing mesh bedded into top third

WBS Stone Wool insulation board (thickness to suit client requirements)

WBS stainless steel NVFB fixing

Non-Ventilated Fire Barrier installed in cavity under compression from main insulant

WBS corner bead bedded into adhesive mortar

Reduced thickness insulation board mechanically fixed to frame

WBS sealing tape

WBS approved fire rated silicone sealant at abutment

Conjectured line of existing window / door

drawing description.

Window / Door jamb detail (2 of 2)

drawing no.

SFS-RAGRAIL-SW-9/25MM BRICKSLIP-06B

project name.

Generic Detail Drawings

drawn by. LS

checked by. RT

revision. -

scale. nts

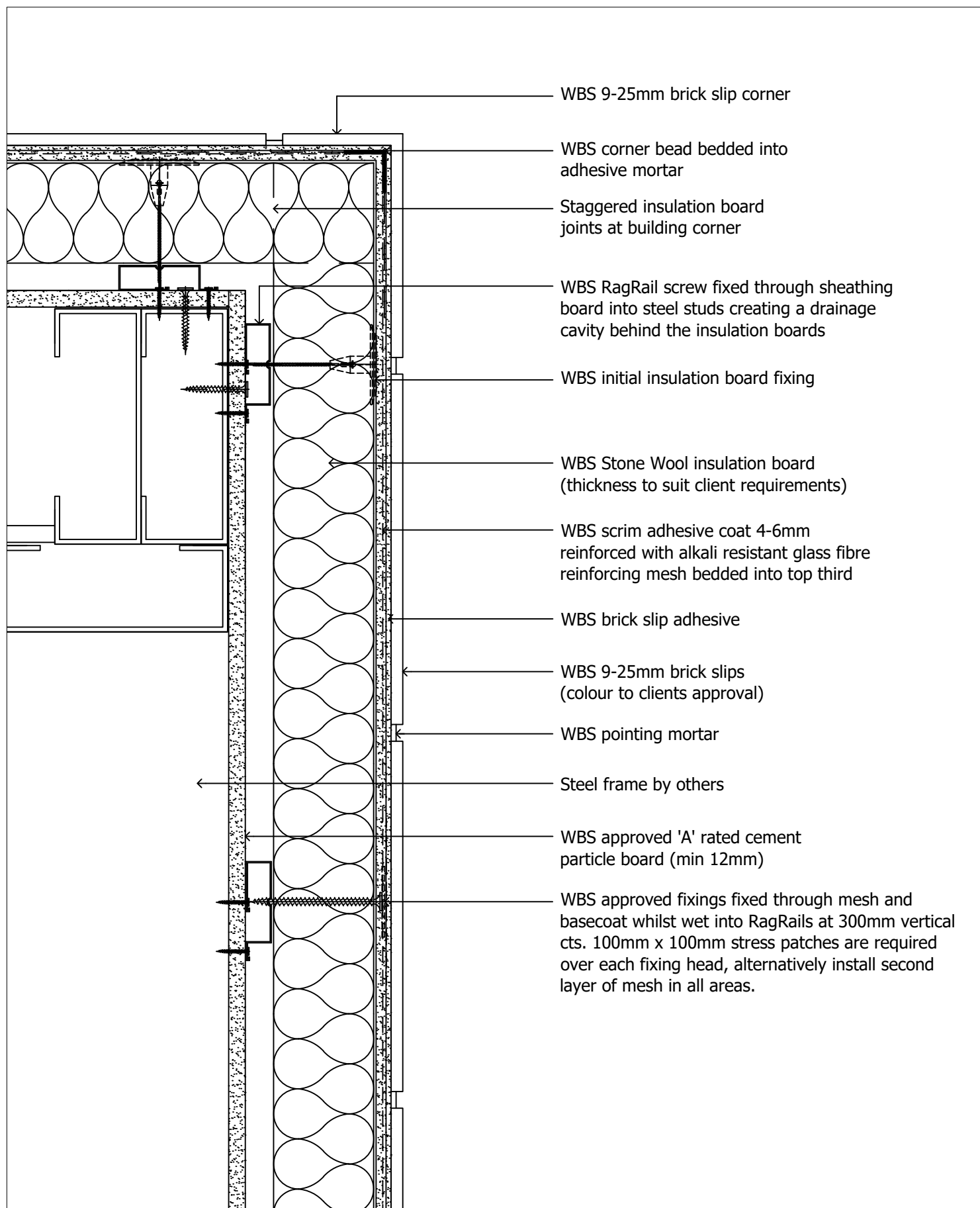
date. 16.05.2022

dwg set. 66

Wetherby Building Systems Ltd



1 Kid Glove Road, Golborne Enterprise Park,
Golborne, Greater Manchester, WA3 3GS
Tel: 01942 717100 Fax: 01942 717101
Web: www.wbs-ltd.co.uk
E-mail: technical@wbs-ltd.co.uk
© WBS-LTD 1998-2022. All rights reserved



drawing description.
Building corner detail

drawing no.
SFS-RAGRAIL-SW-9/25MM BRICKSLIP-07A

project name.
Generic Detail Drawings

drawn by. LS

checked by. RT

revision. -

scale. nts

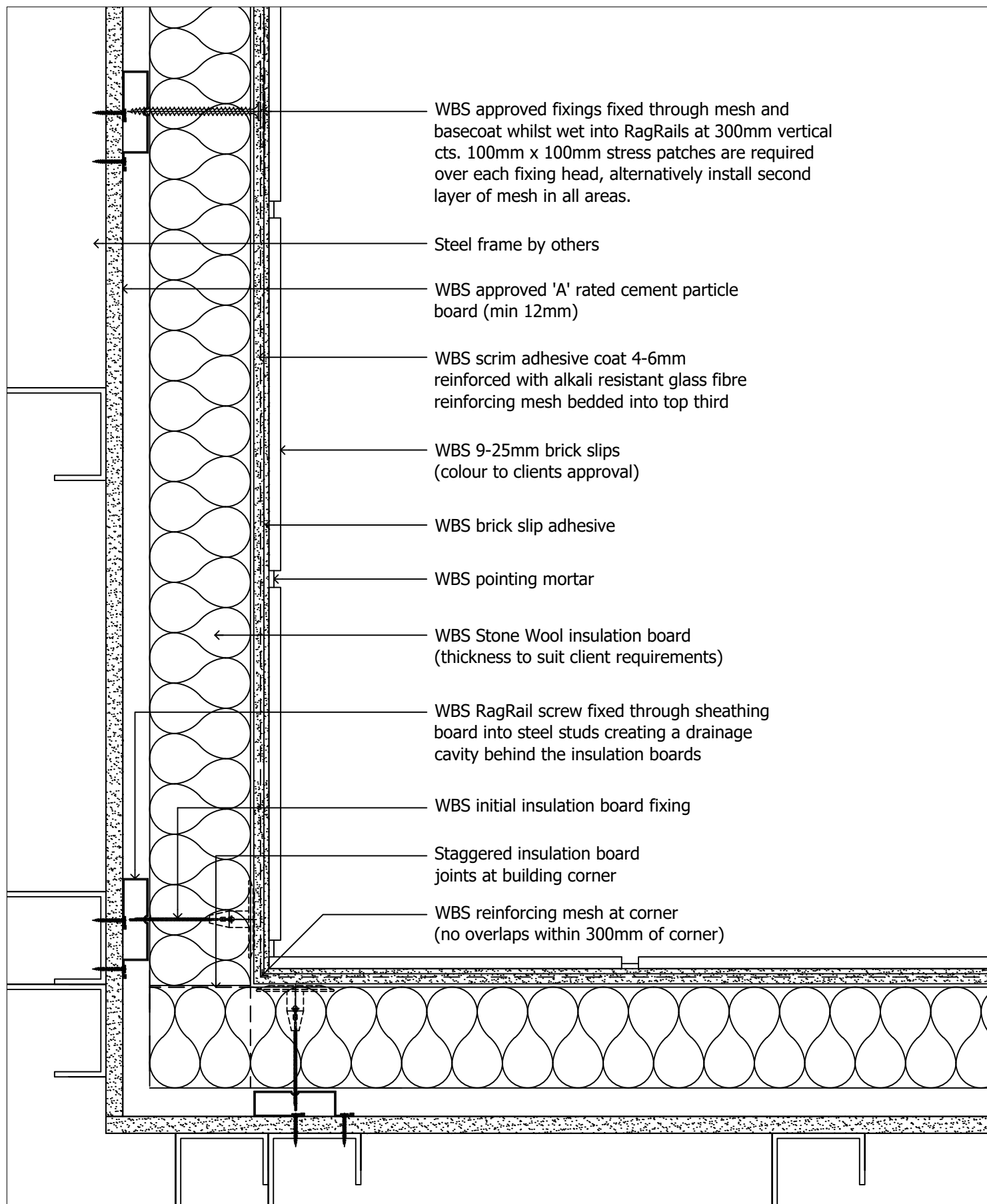
date. 16.05.2022

dwg set. 66

Wetherby Building Systems Ltd



1 Kid Glove Road, Golborne Enterprise Park,
Golborne, Greater Manchester, WA3 3GS
Tel: 01942 717100 Fax: 01942 717101
Web: www.wbs-ltd.co.uk
E-mail: technical@wbs-ltd.co.uk
© WBS-LTD 1998-2022. All rights reserved



drawing description.
Internal building corner detail

drawing no.
SFS-RAGRAIL-SW-9/25MM BRICKSLIP-07B

project name.
Generic Detail Drawings

drawn by. LS

checked by. RT

revision. -

scale. nts

date. 16.05.2022

dwg set. 66

Wetherby Building Systems Ltd



1 Kid Glove Road, Golborne Enterprise Park,
Golborne, Greater Manchester, WA3 3GS
Tel: 01942 717100 Fax: 01942 717101
Web: www.wbs-ltd.co.uk
E-mail: technical@wbs-ltd.co.uk
© WBS-LTD 1998-2022. All rights reserved

WBS approved fixings fixed through mesh and basecoat whilst wet into RagRails at 300mm vertical cts. 100mm x 100mm stress patches are required over each fixing head, alternatively install second layer of mesh in all areas.

WBS movement joint located at maximum 300mm centres

WBS sealing tape

WBS approved 'A' rated cement particle board (min 12mm)

Steel frame by others

WBS RagRail screw fixed through sheathing board into steel studs creating a drainage cavity behind the insulation boards

WBS scrim adhesive coat
4-6mm reinforced with alkali resistant glass fibre reinforcing mesh bedded into top third

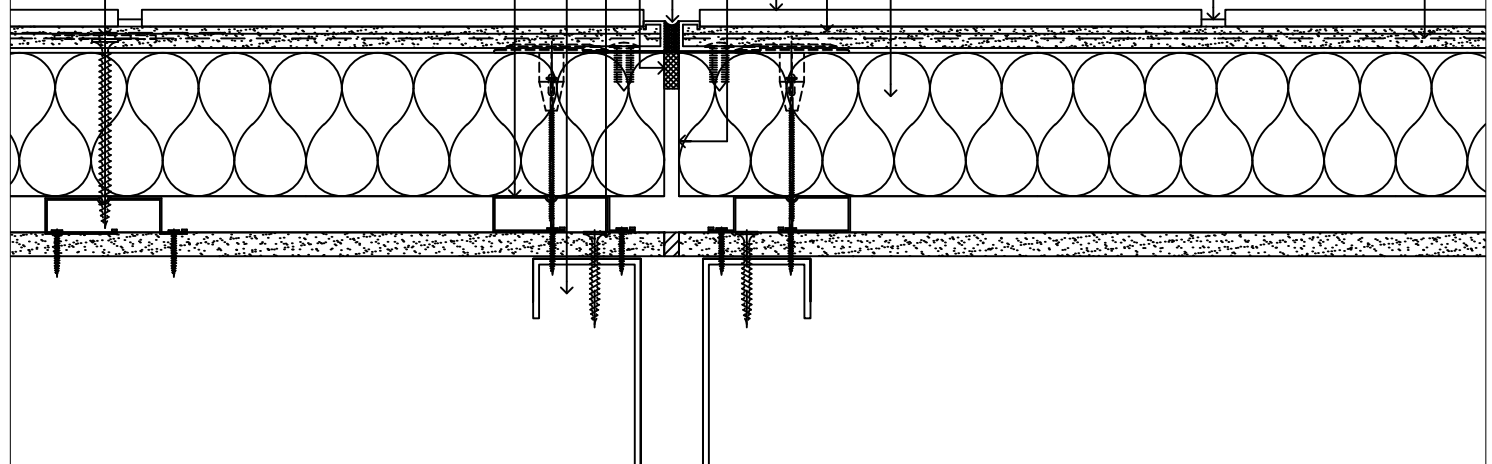
6mm channel cut through insulation

WBS pointing mortar

WBS 9-25mm brick slips (colour to clients approval)

WBS brick slip adhesive

WBS Stone Wool insulation board (thickness to suit client requirements)



drawing description.

Vertical movement joint detail

drawing no.

SFS-RAGRAIL-SW-9/25MM BRICKSLIP-08A

project name.

Generic Detail Drawings

drawn by. LS

checked by. RT

revision. -

scale. nts

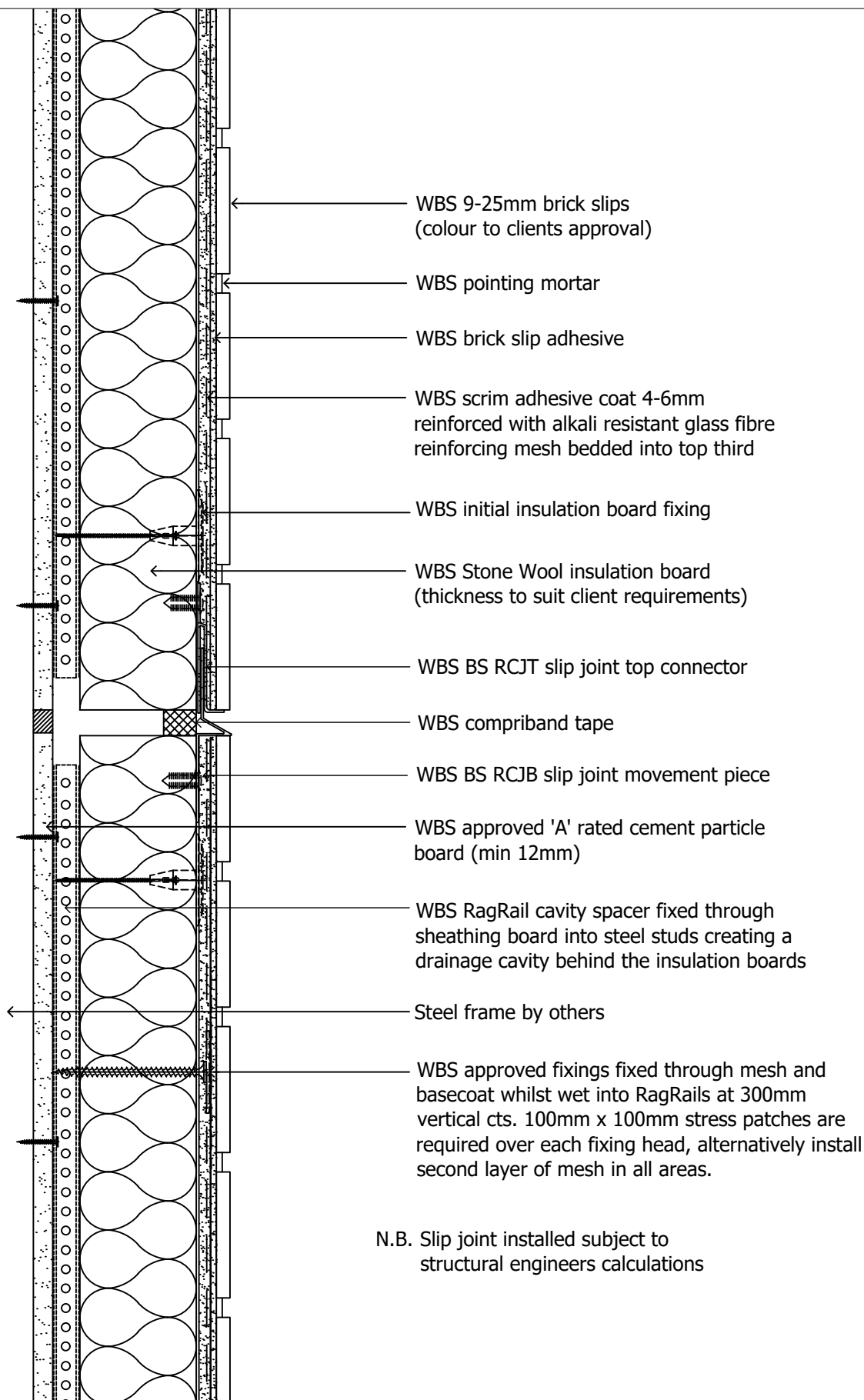
date. 16.05.2022

dwg set. 66

Wetherby Building Systems Ltd



1 Kid Glove Road, Golborne Enterprise Park,
Golborne, Greater Manchester, WA3 3GS
Tel: 01942 717100 Fax: 01942 717101
Web: www.wbs-ltd.co.uk
E-mail: technical@wbs-ltd.co.uk
© WBS-LTD 1998-2022. All rights reserved



drawing description.

Horizontal movement joint detail

drawing no.

SFS-RAGRAIL-SW-9/25MM BRICKSLIP-08B

project name.

Generic Detail Drawings

drawn by. LS

checked by. RT

revision. -

scale. nts

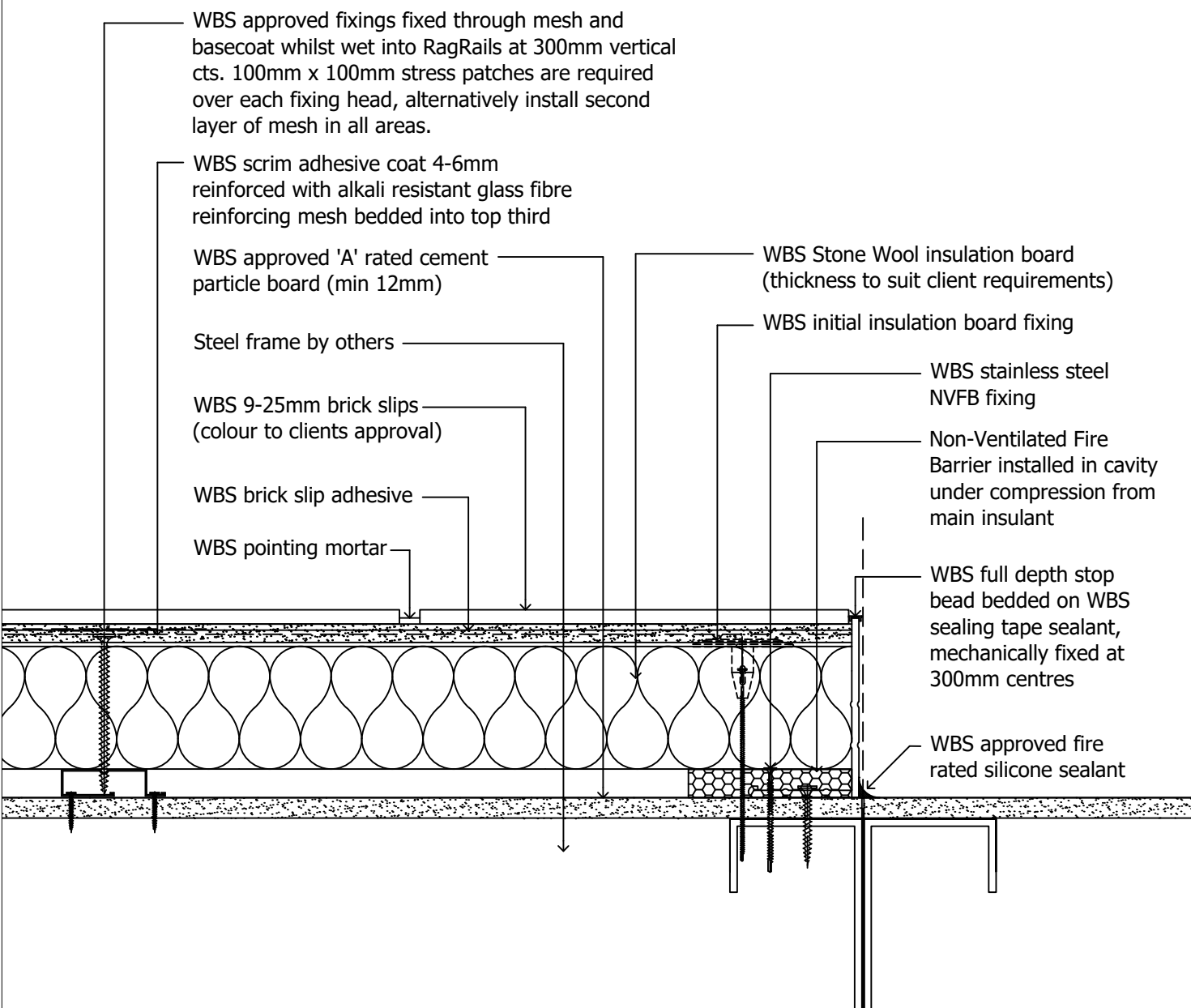
date. 16.05.2022


dwg set. 66

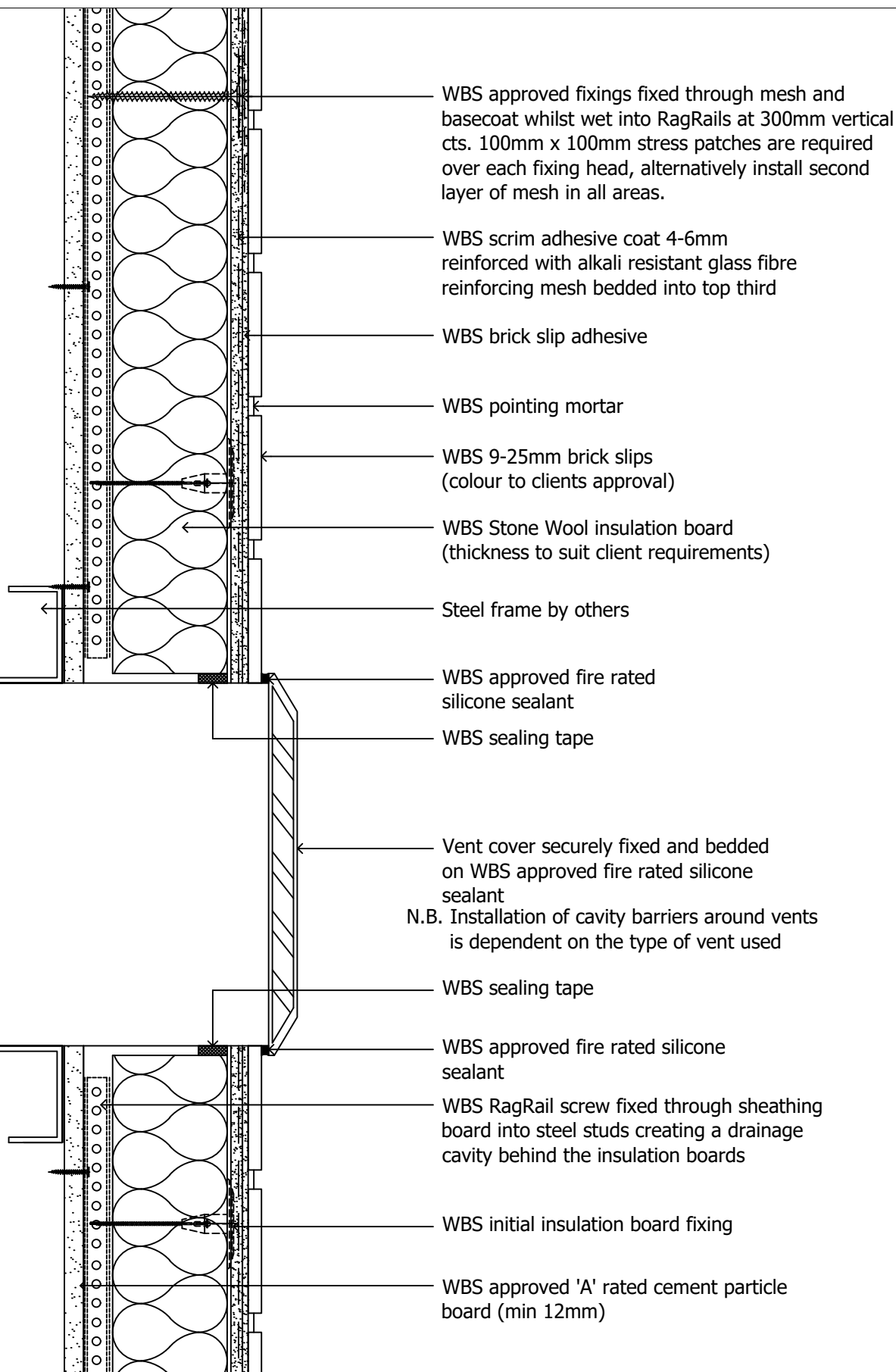
Wetherby Building Systems Ltd



1 Kid Glove Road, Golborne Enterprise Park,
Golborne, Greater Manchester, WA3 3GS
Tel: 01942 717100 Fax: 01942 717101
Web: www.wbs-ltd.co.uk
E-mail: technical@wbs-ltd.co.uk
© WBS-LTD 1998-2022. All rights reserved



drawing description. System termination detail	drawn by. LS	 1 Kid Glove Road, Golborne Enterprise Park, Golborne, Greater Manchester, WA3 3GS Tel: 01942 717100 Fax: 01942 717101 Web: www.wbs-ltd.co.uk E-mail: technical@wbs-ltd.co.uk © WBS-LTD 1998-2022. All rights reserved
	checked by. RT	
drawing no. SFS-RAGRAIL-SW-9/25MM BRICKSLIP-12	revision. -	
	scale. nts	
project name. Generic Detail Drawings	date. 16.05.2022	
	dwg set. 66	



drawing description.
Air vent detail

drawing no.
SFS-RAGRAIL-SW-9/25MM BRICKSLIP-13

project name.
Generic Detail Drawings

drawn by. LS

checked by. RT

revision. -

scale. nts

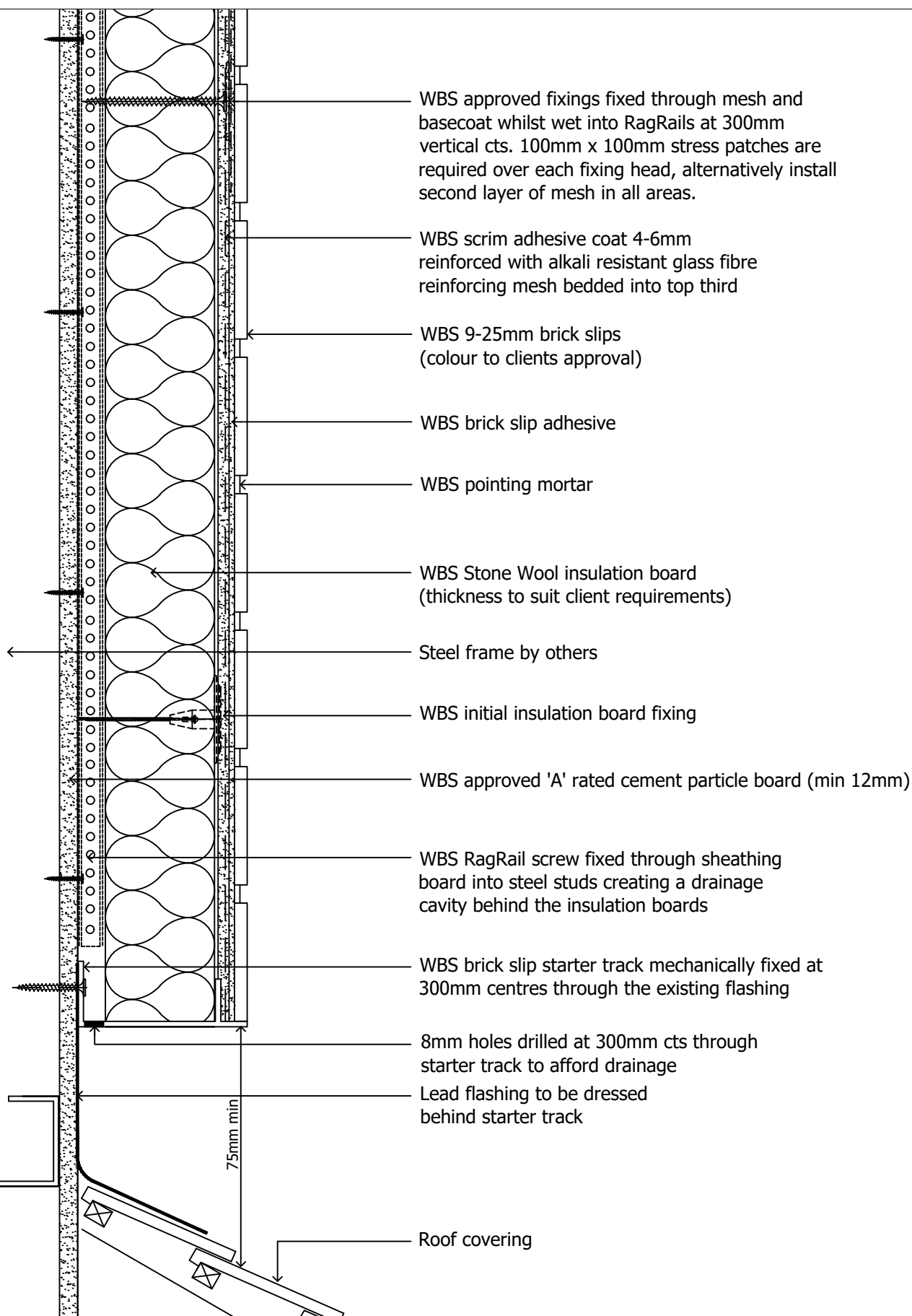
date. 16.05.2022

dwg set. 66

Wetherby Building Systems Ltd



1 Kid Glove Road, Golborne Enterprise Park,
Golborne, Greater Manchester, WA3 3GS
Tel: 01942 717100 Fax: 01942 717101
Web: www.wbs-ltd.co.uk
E-mail: technical@wbs-ltd.co.uk
© WBS-LTD 1998-2022. All rights reserved



drawing description.

Roof junction detail (1 of 2)

drawing no.

SFS-RAGRAIL-SW-9/25MM BRICKSLIP-14A

project name.

Generic Detail Drawings

drawn by. LS

checked by. RT

revision. -

scale. nts

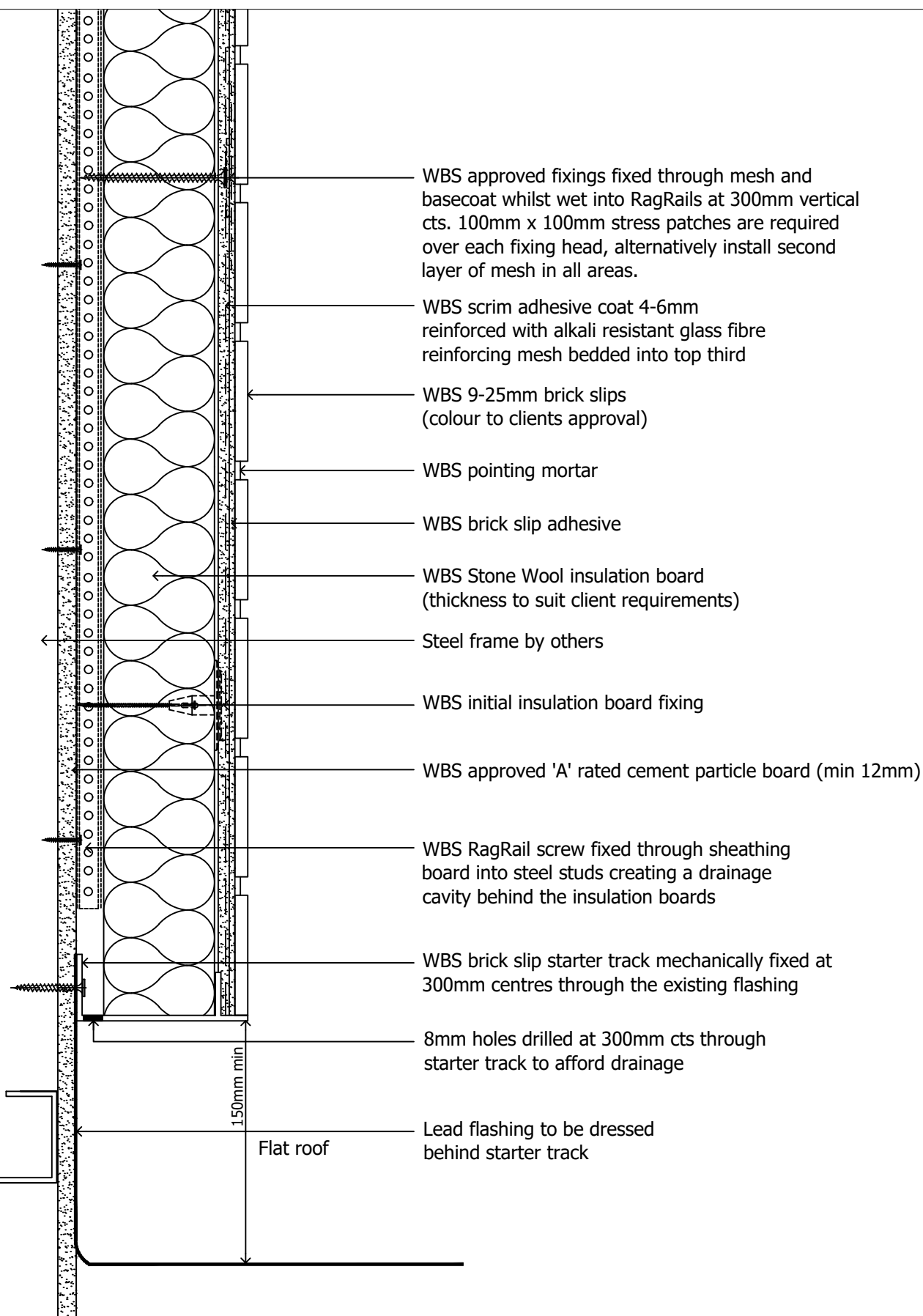
date. 16.05.2022

dwg set. 66

Wetherby Building Systems Ltd



1 Kid Glove Road, Golborne Enterprise Park,
Golborne, Greater Manchester, WA3 3GS
Tel: 01942 717100 Fax: 01942 717101
Web: www.wbs-ltd.co.uk
E-mail: technical@wbs-ltd.co.uk
© WBS-LTD 1998-2022. All rights reserved



drawing description.

Roof junction detail (2 of 2)

drawing no.

SFS-RAGRAIL-SW-9/25MM BRICKSLIP-14B

project name.

Generic Detail Drawings

drawn by. LS

checked by. RT

revision. -

scale. nts

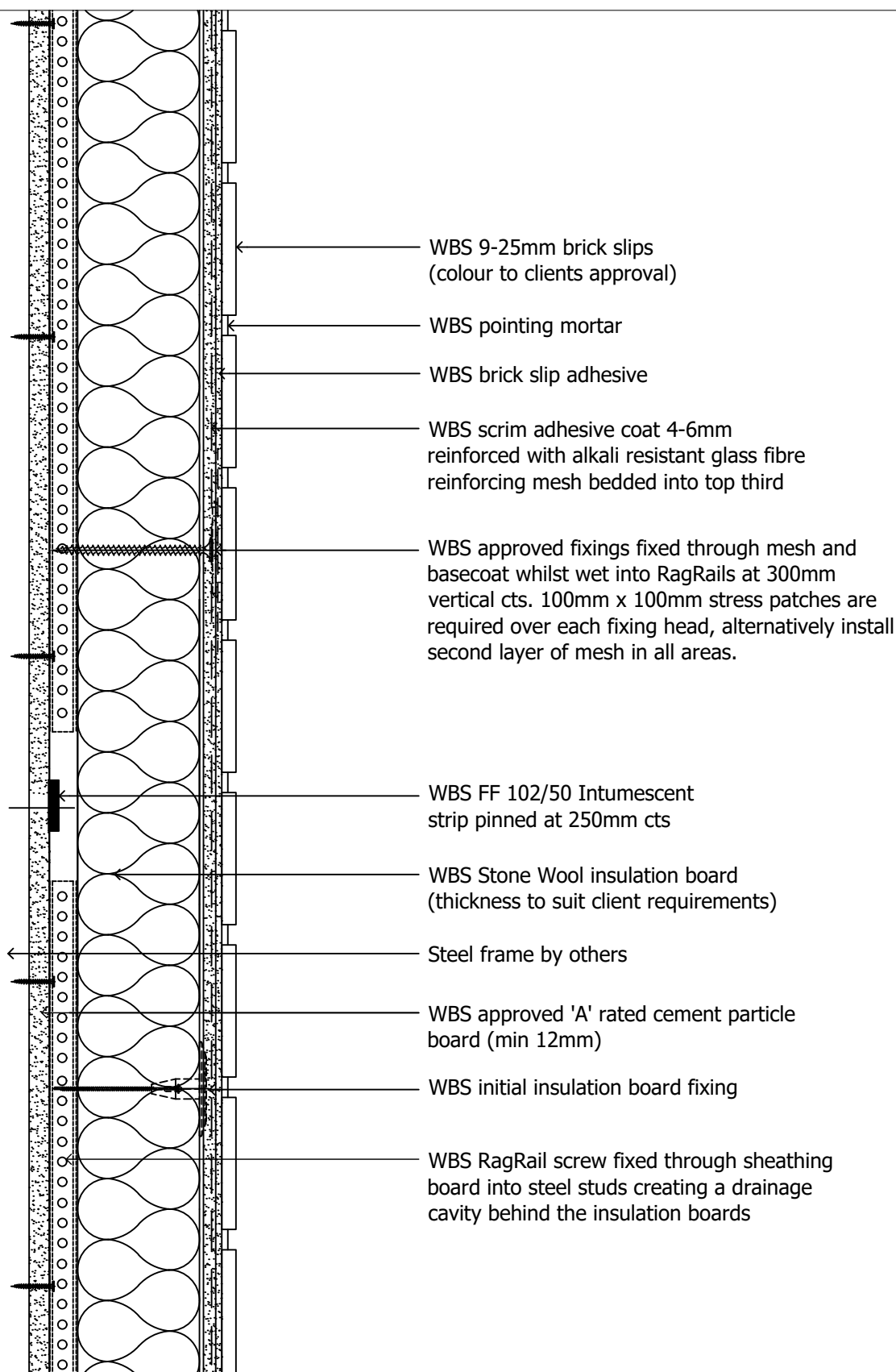
date. 16.05.2022

dwg set. 66

Wetherby Building Systems Ltd



1 Kid Glove Road, Golborne Enterprise Park,
Golborne, Greater Manchester, WA3 3GS
Tel: 01942 717100 Fax: 01942 717101
Web: www.wbs-ltd.co.uk
E-mail: technical@wbs-ltd.co.uk
© WBS-LTD 1998-2022. All rights reserved



drawing description.

Horizontal fire barrier detail

drawing no.

SFS-RAGRAIL-SW-9/25MM BRICKSLIP-17A

project name.

Generic Detail Drawings

drawn by. LS

checked by. RT

revision. -

scale. nts

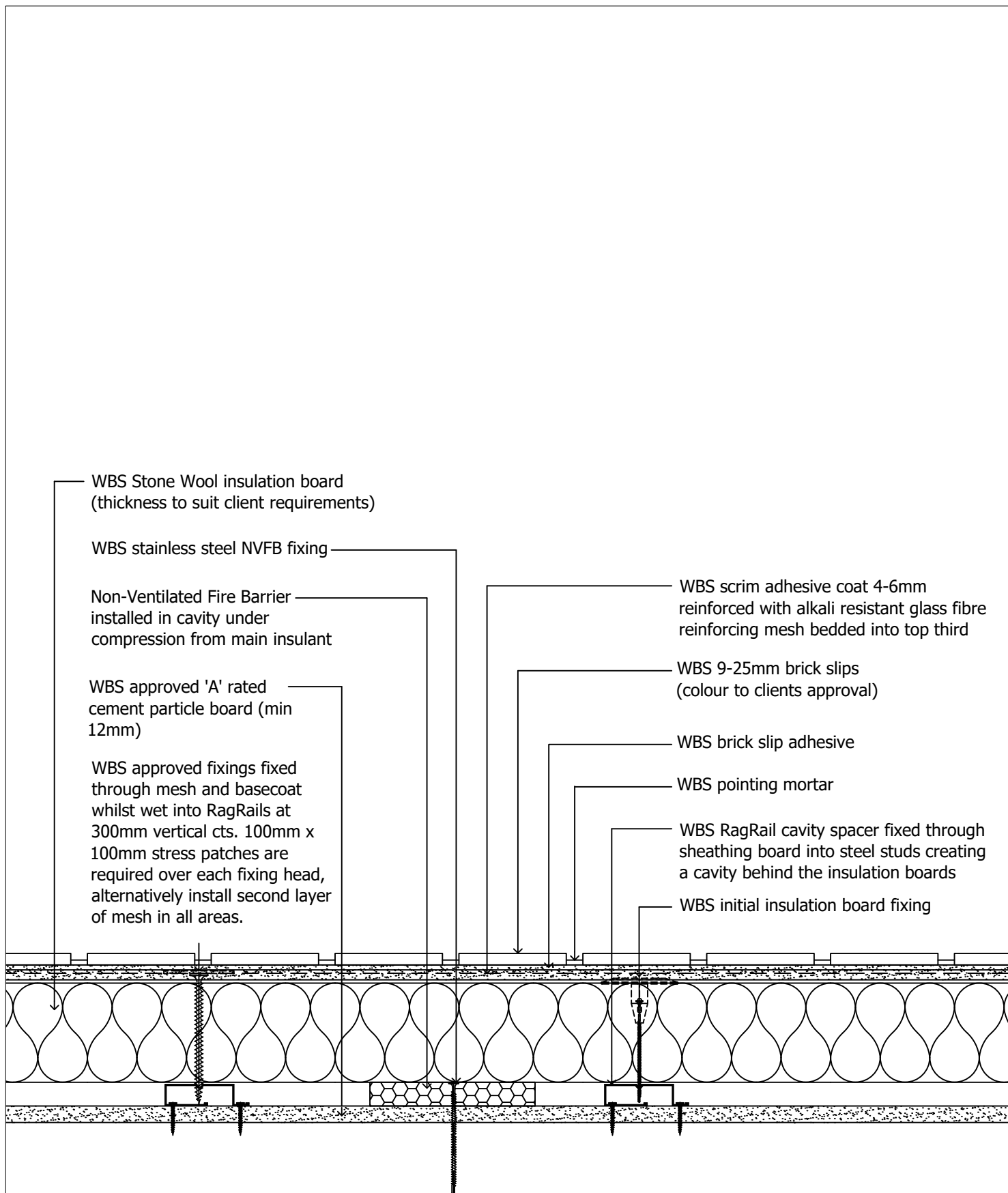
date. 16.05.2022

dwg set. 66

Wetherby Building Systems Ltd



1 Kid Glove Road, Golborne Enterprise Park,
Golborne, Greater Manchester, WA3 3GS
Tel: 01942 717100 Fax: 01942 717101
Web: www.wbs-ltd.co.uk
E-mail: technical@wbs-ltd.co.uk
© WBS-LTD 1998-2022. All rights reserved



drawing description.

Vertical fire barrier detail

drawing no.

SFS-RAGRAIL-SW-9/25MM BRICKSLIP-17B

project name.

Generic Detail Drawings

drawn by. LS

checked by. RT

revision. -

scale. nts

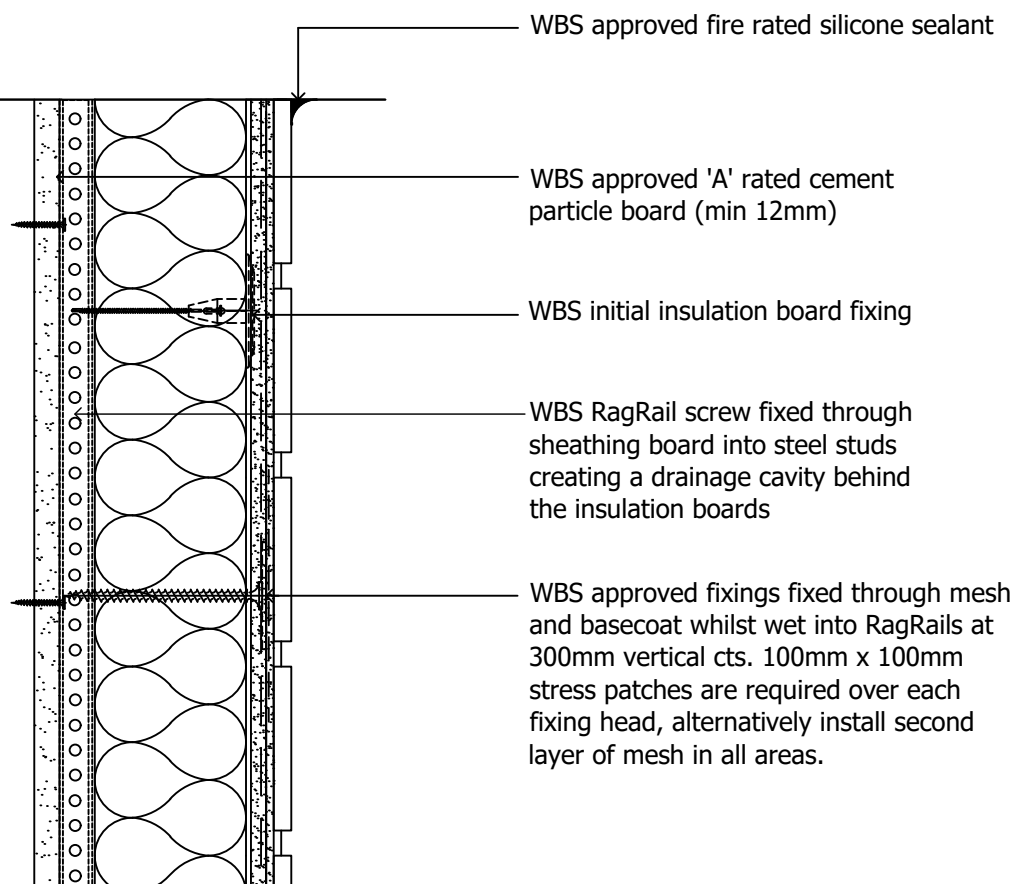
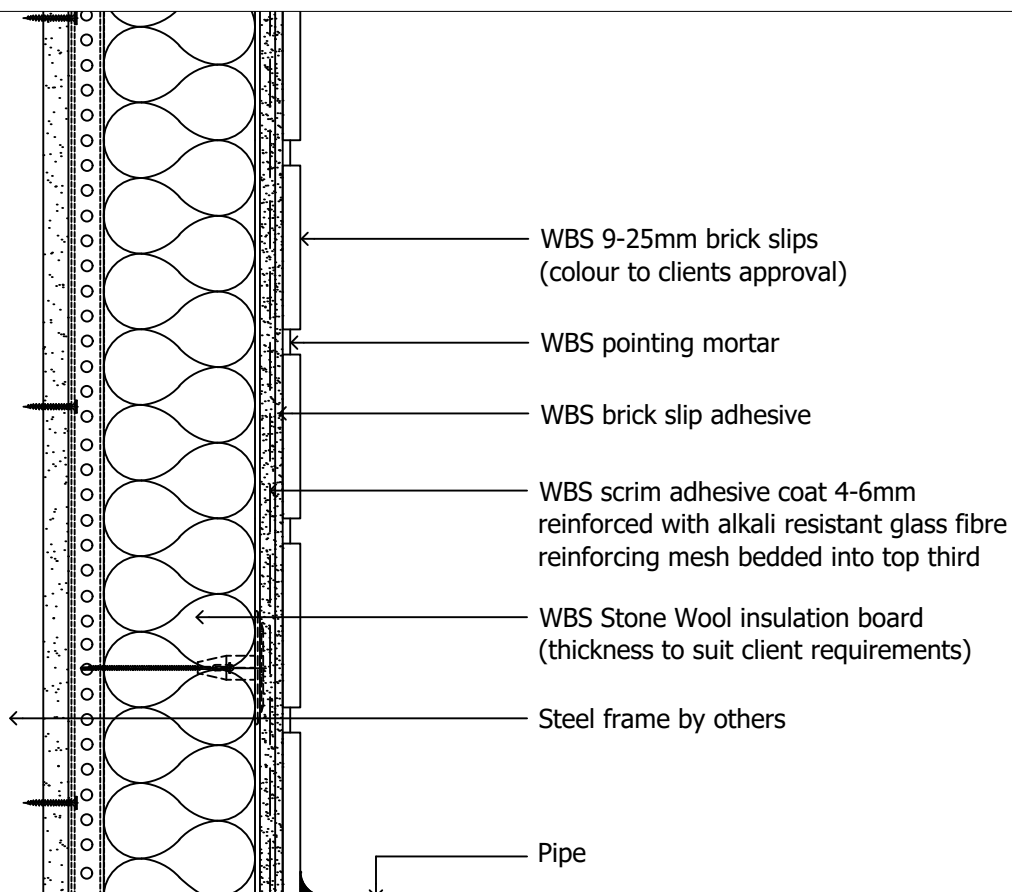
date. 16.05.2022

dwg set. 66

Wetherby Building Systems Ltd



1 Kid Glove Road, Golborne Enterprise Park,
Golborne, Greater Manchester, WA3 3GS
Tel: 01942 717100 Fax: 01942 717101
Web: www.wbs-ltd.co.uk
E-mail: technical@wbs-ltd.co.uk
© WBS-LTD 1998-2022. All rights reserved



drawing description.

Pipe detail

drawing no.

SFS-RAGRAIL-SW-9/25MM BRICKSLIP-18

project name.

Generic Detail Drawings

drawn by. LS

checked by. RT

revision. -

scale. nts

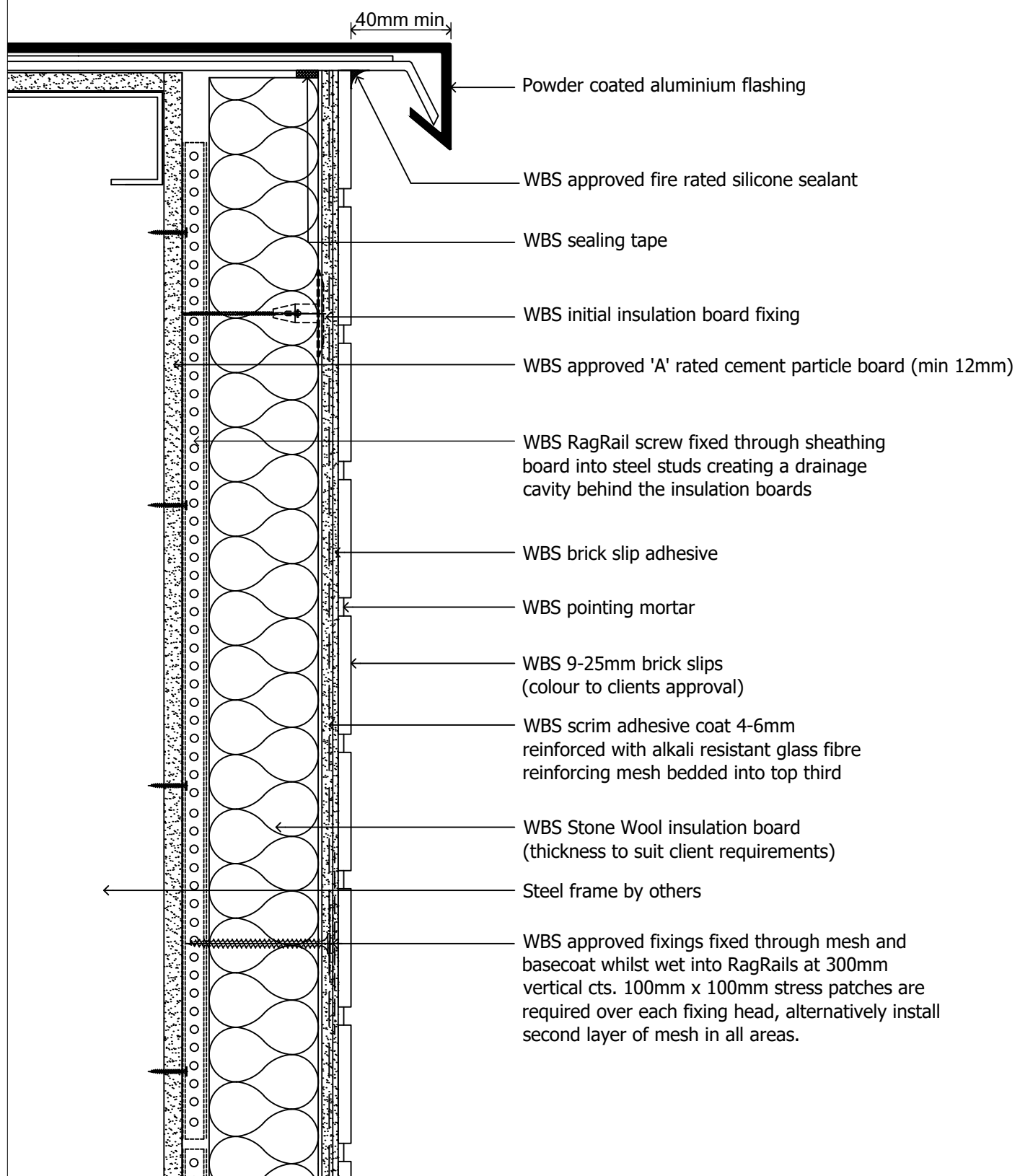
date. 16.05.2022

dwg set. 66

Wetherby Building Systems Ltd



1 Kid Glove Road, Golborne Enterprise Park,
Golborne, Greater Manchester, WA3 3GS
Tel: 01942 717100 Fax: 01942 717101
Web: www.wbs-ltd.co.uk
E-mail: technical@wbs-ltd.co.uk
© WBS-LTD 1998-2022. All rights reserved



drawing description.
Parapet detail

drawing no.
SFS-RAGRAIL-SW-9/25MM BRICKSLIP-21

project name.
Generic Detail Drawings

drawn by. LS

checked by. RT

revision. -

scale. nts

date. 16.05.2022

dwg set. 66

Wetherby Building Systems Ltd



1 Kid Glove Road, Golborne Enterprise Park,
Golborne, Greater Manchester, WA3 3GS
Tel: 01942 717100 Fax: 01942 717101
Web: www.wbs-ltd.co.uk
E-mail: technical@wbs-ltd.co.uk
© WBS-LTD 1998-2022. All rights reserved